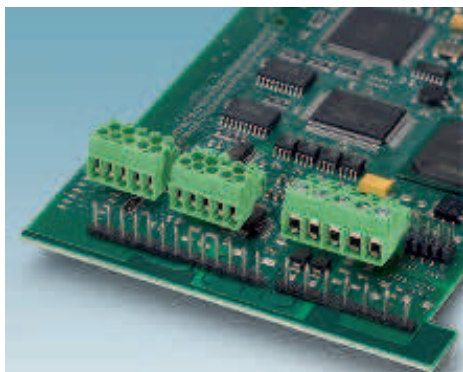


PT 1,5 series

Connectors with screw connection up to 1.5 mm<sup>2</sup>






- High terminal block capacity thanks to rectangular terminal block space
- 3.5 mm and 5.0 mm pitch
- Highly flexible conductor protection for easy, repeat connection
- Connectors with two integrated plug-in directions available, can be keyed on request
- Plus/minus screw
- Connectors with a rugged and reliable contact system
- Keying option

**Notes:**  
 In accordance with DIN EN 61984, COMBICON connectors have no switching power. During designated use, they must not be plugged in or disconnected when carrying voltage or under load.

**COMBICON select**  
 Possible combinations for plug-in connectors can be found in COMBICON select at [www.phoenixcontact.net/catalog](http://www.phoenixcontact.net/catalog) or starting on page 506.

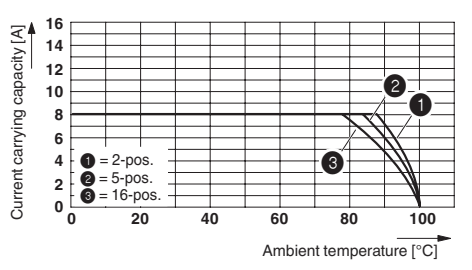
1) Please observe the derating curves. Derating curves for other possible combinations are available on request.

2) When using ferrules, a maximum of 125 V is only achieved in combination with surge voltage category/pollution degree II/2.

Accessories		
For all types	Type	Page
	Marker cards SK 3,5/2,8	841
	Screwdriver SZS 0,4 x 2,5 Order No. 1205037	
	Keying profile CP-PT 1,5 Order No. 1985564	38

**Representative derating curve**

Type: PT 1,5/...PH-3,5  
 Tested in accordance with DIN EN 60512-5-2:2003-01  
 Reduction factor = 1  
 No. of positions: 5

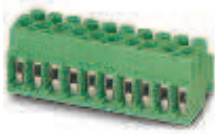


Technical data	
Technical data according to IEC/DIN VDE	
Rated current / conductor cross section	[A] / [mm <sup>2</sup> ]
Rated insulation voltage for pollution degree 2	[V]
Pitch	[mm]
Connection capacity	
Solid / stranded	[mm <sup>2</sup> ] / [mm <sup>2</sup> ] / AWG
Stranded with ferrules without plastic sleeve	[mm <sup>2</sup> ]
Stranded with ferrules with plastic sleeve	[mm <sup>2</sup> ]
Multi-conductor connection capacity (two conductors with the same cross section)	
Solid / stranded	[mm <sup>2</sup> ]
Stranded with ferrules without plastic sleeve	[mm <sup>2</sup> ]
Stranded with TWIN ferrule with plastic sleeve	[mm <sup>2</sup> ]
Insulation coordination	
Surge voltage category / pollution degree	
Rated insulation voltage	[V]
Rated surge voltage	[kV]
Approval data (UL/CUL)	Use Group
Nominal voltage	[V]
Nominal current	[A]
Connection capacity AWG	AWG
Approval data (CSA)	Use Group
Nominal voltage	[V]
Nominal current	[A]
Connection capacity AWG	AWG
General data	
Stripping length	[mm]
Screw thread	
Tightening torque	[Nm]
Type of insulation material / insulation material group	
Inflammability class according to UL 94	

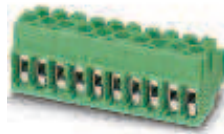
PT 1,5/...-PH-3,5		
Rated current / conductor cross section	8 <sup>1)</sup> / 1.5	
Rated insulation voltage for pollution degree 2	200	
Pitch	3.5	
Connection capacity		
Solid / stranded	0.2 - 1.5 / 0.2 - 1.5 / 26 - 16	
Stranded with ferrules without plastic sleeve	-	
Stranded with ferrules with plastic sleeve	0.25 - 0.75 <sup>2)</sup>	
Multi-conductor connection capacity (two conductors with the same cross section)		
Solid / stranded	0.2 - 0.34 / 0.2 - 0.5	
Stranded with ferrules without plastic sleeve	-	
Stranded with TWIN ferrule with plastic sleeve	-	
Insulation coordination		
Surge voltage category / pollution degree	III / 3	III / 2
Rated insulation voltage	160	200
Rated surge voltage	2.5	2.5
Approval data (UL/CUL)	B	C
Nominal voltage	300	-
Nominal current	10	-
Connection capacity AWG	26 - 16	-
Approval data (CSA)	B	C
Nominal voltage	-	-
Nominal current	-	-
Connection capacity AWG	-	-
General data		
Stripping length	5	
Screw thread	M2	
Tightening torque	0.22 - 0.25	
Type of insulation material / insulation material group	PA / I	
Inflammability class according to UL 94	V0	

PT 1,5/...-PVH-3,5		
Rated current / conductor cross section	8 <sup>1)</sup> / 1.5	
Rated insulation voltage for pollution degree 2	200	
Pitch	3.5	
Connection capacity		
Solid / stranded	0.2 - 1.5 / 0.2 - 1.5 / 26 - 16	
Stranded with ferrules without plastic sleeve	-	
Stranded with ferrules with plastic sleeve	0.25 - 0.75 <sup>2)</sup>	
Multi-conductor connection capacity (two conductors with the same cross section)		
Solid / stranded	0.2 - 0.34 / 0.2 - 0.5	
Stranded with ferrules without plastic sleeve	-	
Stranded with TWIN ferrule with plastic sleeve	-	
Insulation coordination		
Surge voltage category / pollution degree	III / 3	III / 2
Rated insulation voltage	160	200
Rated surge voltage	2.5	2.5
Approval data (UL/CUL)	B	C
Nominal voltage	300	-
Nominal current	10	-
Connection capacity AWG	26 - 16	-
Approval data (CSA)	B	C
Nominal voltage	-	-
Nominal current	-	-
Connection capacity AWG	-	-
General data		
Stripping length	5	
Screw thread	M2	
Tightening torque	0.22 - 0.25	
Type of insulation material / insulation material group	PA / I	
Inflammability class according to UL 94	V0	

No. of pos.	Dim. a [mm]
2	3.50
3	7.00
4	10.50
5	14.00
6	17.50
7	21.00
8	24.50
9	28.00
10	31.50
11	35.00
12	38.50
13	42.00
14	45.50
15	49.00
16	52.50



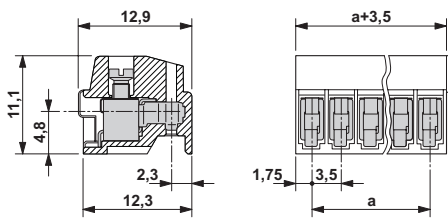
PCB screw terminal blocks, plugged into PST 1,0/...-3,5 pin strip horizontally



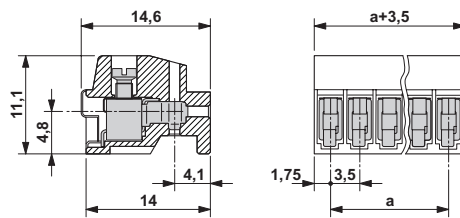
PCB screw terminal block, plugged into PST 1,0/...-3,5 pin strip horizontally and vertically



Dimensional drawing



Dimensional drawing



Ordering data		
Type	Order No.	Pcs. / Pkt.
3.5 mm pitch, color: green		
PT 1,5/ 2-PH-3,5	1984316	250
PT 1,5/ 3-PH-3,5	1984329	250
PT 1,5/ 4-PH-3,5	1984332	250
PT 1,5/ 5-PH-3,5	1984345	100
PT 1,5/ 6-PH-3,5	1984358	100
PT 1,5/ 7-PH-3,5	1984361	100
PT 1,5/ 8-PH-3,5	1984374	100
PT 1,5/ 9-PH-3,5	1984387	100
PT 1,5/10-PH-3,5	1984390	100
PT 1,5/11-PH-3,5	1984400	50
PT 1,5/12-PH-3,5	1984413	50
PT 1,5/13-PH-3,5	1984426	50
PT 1,5/14-PH-3,5	1984439	50
PT 1,5/15-PH-3,5	1984442	50
PT 1,5/16-PH-3,5	1984455	50

Ordering data		
Type	Order No.	Pcs. / Pkt.
3.5 mm pitch, color: green		
PT 1,5/ 2-PVH-3,5	1984015	250
PT 1,5/ 3-PVH-3,5	1984028	250
PT 1,5/ 4-PVH-3,5	1984031	250
PT 1,5/ 5-PVH-3,5	1984044	100
PT 1,5/ 6-PVH-3,5	1984057	100
PT 1,5/ 7-PVH-3,5	1984060	100
PT 1,5/ 8-PVH-3,5	1984073	100
PT 1,5/ 9-PVH-3,5	1984086	100
PT 1,5/10-PVH-3,5	1984099	100
PT 1,5/11-PVH-3,5	1984109	50
PT 1,5/12-PVH-3,5	1984112	50
PT 1,5/13-PVH-3,5	1984125	50
PT 1,5/14-PVH-3,5	1984138	50
PT 1,5/15-PVH-3,5	1984141	50
PT 1,5/16-PVH-3,5	1984154	50