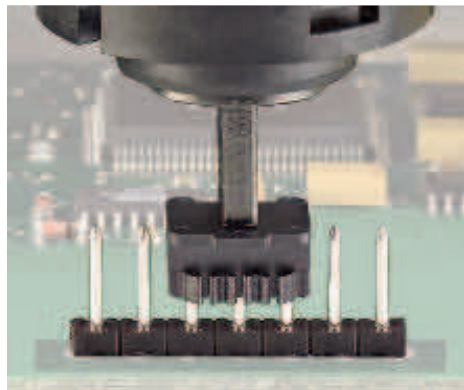


PST series

Pin strips for COMBICON compact connectors



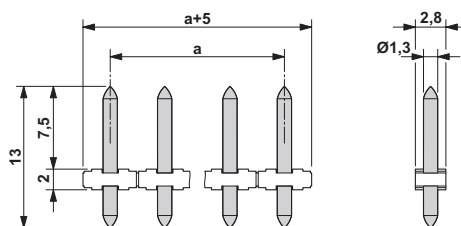
Notes:
 In accordance with DIN EN 61984, COMBICON connectors have no switching power. During designated use, they must not be plugged in or disconnected when carrying voltage or under load.
COMBICON select
 Possible combinations for plug-in connectors can be found in COMBICON select at www.phoenixcontact.net/catalog or starting on page 506.
 These items are also available in larger unit packs.
 Dimensional drawings of the tape and pick-and-place pads can be found on page 866.



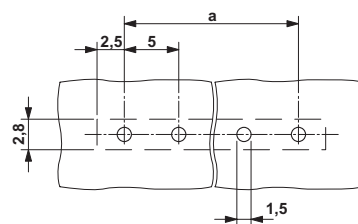
Pin strip, plug-in direction vertical to the PCB



Dimensional drawing



Drilling diagram



- Reflow solderable pin strip, optimized for COMBICON compact connectors
- 5.0 mm pitch
- Optimum pin geometry so as to not damage the connector
- Various pin lengths and pin geometries available on request
- Pin strip available in machine-compatible packaging (tube magazine or tape)
- Pin strip with a pad for the suction pipette pushed over it for optional tape-on-reel packing

Technical data

Technical data according to IEC/DIN VDE				
Rated current / conductor cross section	[A] / [mm ²]	12 / -		
Rated insulation voltage for pollution degree 2	[V]	320		
Pitch	[mm]	5		
Insulation coordination				
Surge voltage category / pollution degree		III / 3	III / 2	II / 2
Rated insulation voltage	[V]	250	320	400
Rated surge voltage	[kV]	4	4	4
Approval data (UL/CUL)	Use Group	B	C	D
Nominal voltage	[V]	300	-	300
Nominal current	[A]	16	-	10
Connection capacity AWG	AWG	-	-	-
Approval data (CSA)	Use Group	B	C	D
Nominal voltage	[V]	300	-	300
Nominal current	[A]	5	-	5
Connection capacity AWG	AWG	-	-	-
General data				
Type of insulation material / insulation material group		PA / IIIa		
Inflammability class according to UL 94		V0		
Drill hole diameter / pin dimensions	[mm]	1.5 / 1.3 mm		

Ordering data

No. of pos.	Dim. a [mm]	Type	Order No.	Pcs. / Pkt.
5.0 mm pitch, color: black				
2	5.00	PST 1,3/ 2-5,0	1933189	50
3	10.00	PST 1,3/ 3-5,0	1933192	50
4	15.00	PST 1,3/ 4-5,0	1933202	50
5	20.00	PST 1,3/ 5-5,0	1933215	50
6	25.00	PST 1,3/ 6-5,0	1933228	50
7	30.00	PST 1,3/ 7-5,0	1933231	50
8	35.00	PST 1,3/ 8-5,0	1933244	50
9	40.00	PST 1,3/ 9-5,0	1933257	50
10	45.00	PST 1,3/10-5,0	1933260	50
11	50.00	PST 1,3/11-5,0	1933273	50
12	55.00	PST 1,3/12-5,0	1933286	50
13	60.00	PST 1,3/13-5,0	1933299	50
14	65.00	PST 1,3/14-5,0	1933309	50
15	70.00	PST 1,3/15-5,0	1933312	50
16	75.00	PST 1,3/16-5,0	1933325	50



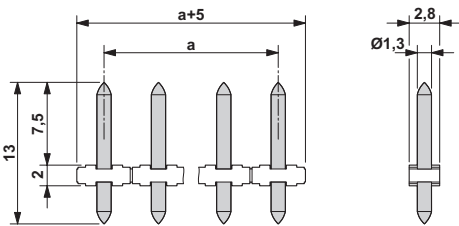
Taped pin strip with 5.0 mm pitch



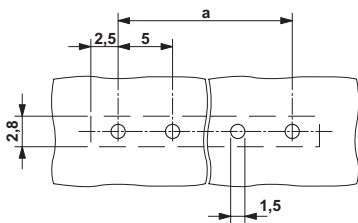
Pin strip, plug-in direction horizontal to the PCB



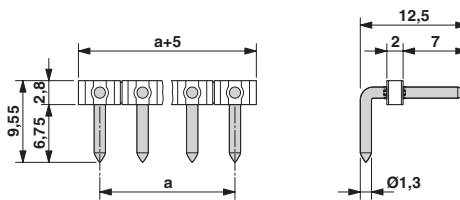
Dimensional drawing



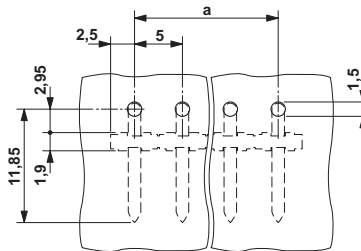
Drilling diagram



Dimensional drawing



Drilling diagram



Ordering data

Type	Order No.	Pcs. / Pkt.
5.0 mm pitch, color: black		
PST 1,3/ 2-5,0 R24	1720301	330
PST 1,3/ 3-5,0 R24	1713169	330
PST 1,3/ 4-5,0 R56	1720314	250
PST 1,3/ 5-5,0 R56	1720327	250
PST 1,3/ 6-5,0 R56	1720330	250
PST 1,3/ 7-5,0 R56	1720343	250
PST 1,3/ 8-5,0 R56	1720356	250

Ordering data

Type	Order No.	Pcs. / Pkt.
PST 1,3/ 2-H-5,0	1995635	250
PST 1,3/ 3-H-5,0	1705478	250
PST 1,3/ 4-H-5,0	1705481	100
PST 1,3/ 5-H-5,0	1705494	100
PST 1,3/ 6-H-5,0	1705504	100
PST 1,3/ 7-H-5,0	1717301	100
PST 1,3/ 8-H-5,0	1717314	100
PST 1,3/ 9-H-5,0	1717327	100
PST 1,3/10-H-5,0	1717330	100
PST 1,3/11-H-5,0	1717343	50
PST 1,3/12-H-5,0	1717356	50
PST 1,3/13-H-5,0	1717369	50
PST 1,3/14-H-5,0	1717372	50
PST 1,3/15-H-5,0	1717385	50
PST 1,3/16-H-5,0	1717398	50