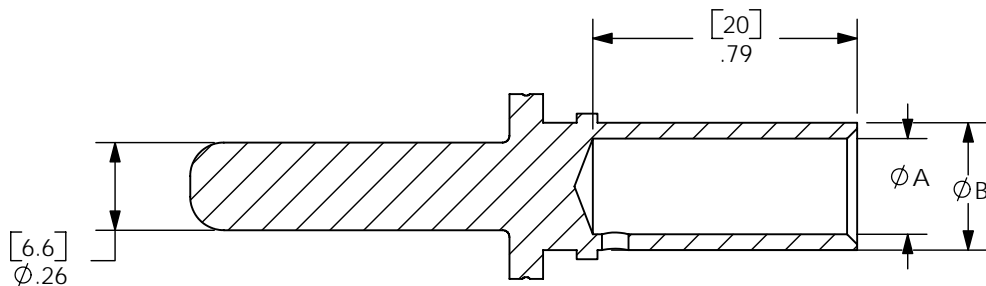
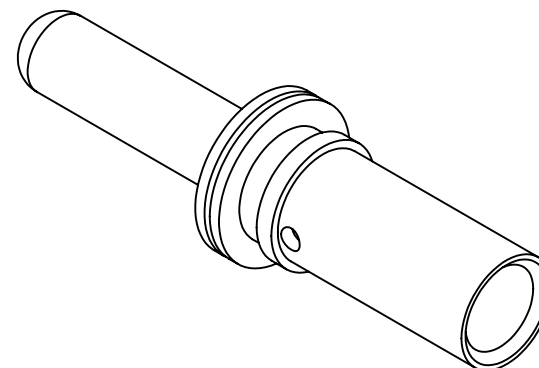
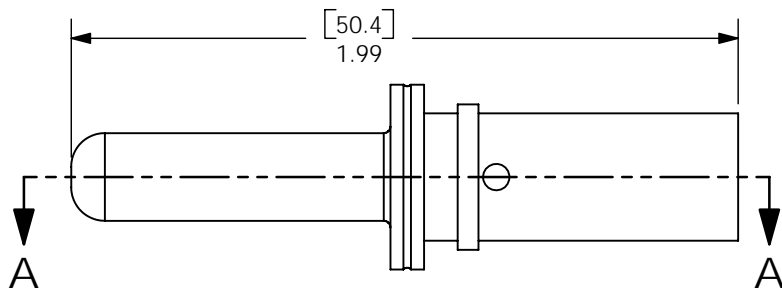
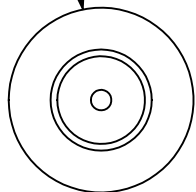


THE INFORMATION CONTAINED IN THIS DRAWING IS THE SOLE PROPERTY OF ANDERSON POWER PRODUCTS. ANY REPRODUCTION IN PART OR WHOLE WITHOUT THE WRITTEN PERMISSION OF ANDERSON POWER PRODUCTS IS PROHIBITED.

Copyright 2004

ANDERSON POWER PRODUCTS RESERVES THE RIGHT TO ALTER PRODUCT TYPES, THEIR TECHNICAL DATA, DIMENSION, STYLE AND ACCESSORIES WITHOUT PRIOR NOTIFICATION.

[14]
Ø.55



SECTION A-A

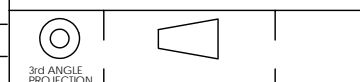
PART NO	WIRE SIZE	A		B	
		IN	MM	IN	MM
PMHPAP01	#2AWG/35mm	.36	9.1	.49	12.5
PMHPAP02	25mm	.32	8.0	.43	11.0
PMHPAP03	#4 AWG	.29	7.2	.38	9.6
PMHPAP04	16mm	.24	6.0	.33	8.4
PMHPAP05	#6 AWG	.22	5.5	.31	7.9

- NOTES:
 1. CONTACTS TO BE USED IN POWERMOD HPA SERIES HOUSINGS ONLY
 2. CONTACTS MUST BE CRIMPED ONTO WIRE BEFORE ASSEMBLY INTO HOUSINGS

DIMENSIONS ARE IN:	INCH[MM]
UNLESS OTHERWISE STATED	
TOLERANCES:	
DECIMALS (INCH)	DECIMALS (MM) ANGLES
XX ±.02	X ±.5 ±2°
SURFACE FINISH:	
MACHINED	128 [3.2] ✓
MOLDED	64 [1.6] ✓
MATERIAL: COPPER ALLOY	
FINISH: SILVER PLATE	

APPROVALS	
DRAWN	CMS 10/4/04
CHECKED	DJD 1/4/05
MFG APP	CHB 1/4/05
QC APP	JA 1/4/05
ENG APP	DAM 1/4/05

TITLE		
POWERMOD HP A SERIES MALE CRIMP CONTACTS		
SIZE	DWG NO.	REV.
A/A4	114543S1	1



-CAD GENERATED DRAWING-
DO NOT MANUALLY UPDATE
DO NOT SCALE

REV.	DESCRIPTION OF CHANGES	APPROVED	DATE
1	ECRN 14030: ADD PIN OD	CMS	6/1/06

SCALE	CADFILE	SHEET
NONE	02146	1 OF 1