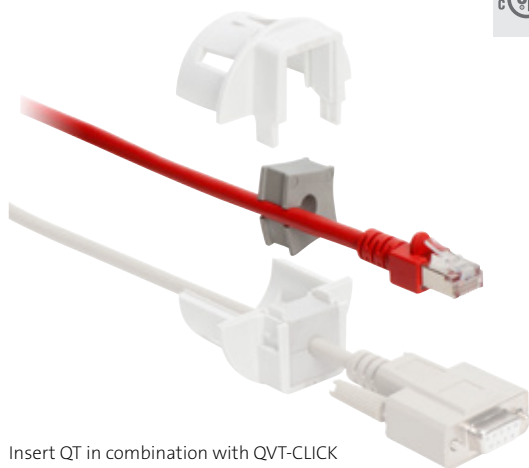
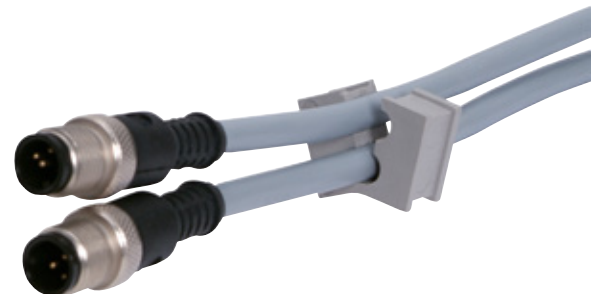





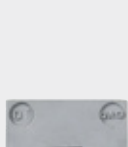



# QT Inserts



Insert QT in combination with QVT-CLICK



Type	Order No. grey	Clamping range	PU	Description
------	-------------------	----------------	----	-------------

QTB	42540	Blind insert	10		
QT 3	42503	3 - 4 mm	10		QT
QT 4	42504	4 - 5 mm	10		
QT 5	42505	5 - 6 mm	10		
QT 6	42506	6 - 7 mm	10		
QT 7	42507	7 - 8 mm	10		
QT 8	42508	8 - 9 mm	10		
QT 9	42509	9 - 10 mm	10		
QT 10	42510	10 - 11 mm	10		
QT 11	42511	11 - 12 mm	10		
QT 12	42512	12 - 13 mm	10		
QT 13	42513	13 - 14 mm	10		
QT 14	42514	14 - 15 mm	10		
QT 2 3	42566	2x Ø 3 mm	10		QT-ASI
QT 2 4	42568	2x Ø 4 mm	10		
QT 2 5	42570	2x Ø 5 mm	10		
QT 2 5.5	42571	2x Ø 5.5 mm	10		
QT 2 6	42572	2x Ø 6 mm	10		
QT 2 6.5	42576	2x Ø 6.5 mm	10		
QT 2 7	42578	2x Ø 7 mm	10		
QT 4 3	42580	4x Ø 3 mm	10		
QT 4 4	42582	4x Ø 4 mm	10		
QT 4 4.5	42583	4x Ø 4.5 mm	10		
QT 4 5	42584	4x Ø 5 mm	10		
QT 4 5.5	42585	4x Ø 5.5 mm	10		
QT 4 6	42586	4x Ø 6 mm	10		
QT-ASI 1	42573	1x ASI-cable	10		QT tele
QT-ASI 2	42574	2x ASI-cable	10		
QT tele	42575	Telephone cable	10		

## Product description

The QT range supports cable diameters from 3 to 15 mm. They are used with the following cable entry frames:

- KEL-QUICK | Page 40 - 41
- QVT / QVT-CLICK | Page 42 - 43
- KEL-QTA | Page 44 - 45

## Assembly

When installing the insert, the smooth side of the insert has to face the middle of the cable entry frame.

## Specification

Material	Elastomer
Flame class	UL94-Vo, self-extinguishing
Temperature	- 40°C to+ 90°C (static)
Properties	Halogen-free, silicone-free

## Accessories

KEL-QUICK Cable entries	Page 40 - 41
QVT Cable glands	Page 42 - 43
KEL-QTA Cable entries	Page 44 - 45