

Eco PDU: an intelligent touch to your green data center



IP-based Green Power Distribution Units

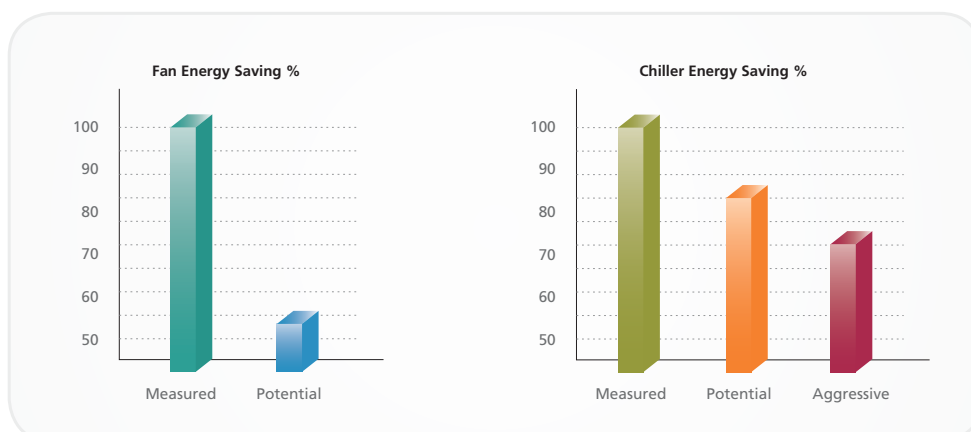


ATEN has developed a new generation of green energy power distribution units (PDUs) to effectively increase the efficiency of data center power usage. The eco PDUs are intelligent PDUs that provide secure, centralized, intelligent, power management (power on, off, cycle) of data center IT equipment, as well as the ability to monitor the center's health environment via sensors.

ATEN eco PDUs offer remote power control combined with real-time power measurement - allowing you to control and monitor the power status of devices attached to the PDUs, either at the PDU device or outlet level, from practically any location via a network connection.



PE8208G



Model	Power Cord (IEC C19 to)	Outlets	Monitoring Level	Amps	
				Per Port	Total
PE6108G	IEC C14	8 x C13	PDU	10A	10A
PE6208G	IEC C20	7 x C13 / 1 x C19	PDU	10A / 16A	16A
PE8108G	IEC C14	8 x C13	Outlet	10A	10A
PE8208G	IEC C20	7 x C13 / 1 x C19	Outlet	10A / 16A	16A

FEATURES

Remote Monitoring

With PDU/Outlet level metering, IT administrators can easily monitor the real-time current, voltage, power consumption and circuit breaker status of all connected IT equipment via a web-based Graphical User Interface (GUI).

External environment sensors allow administrators to monitor temperature, humidity, and differential pressure of the rack environment from just about anywhere in the world.

Remote Power Control

By simply clicking a button on the web-based GUI, administrators can control the power of connected devices with ease. Each outlet can be managed individually.

Early Warning Notification

The PDU allows setting custom thresholds for current, voltage, power consumption, humidity, temperature and pressure. When levels exceed the user defined thresholds, designated recipients can receive alarm notifications via email, SNMP traps or the built-in sound alarm and warning lights.

Advanced Security

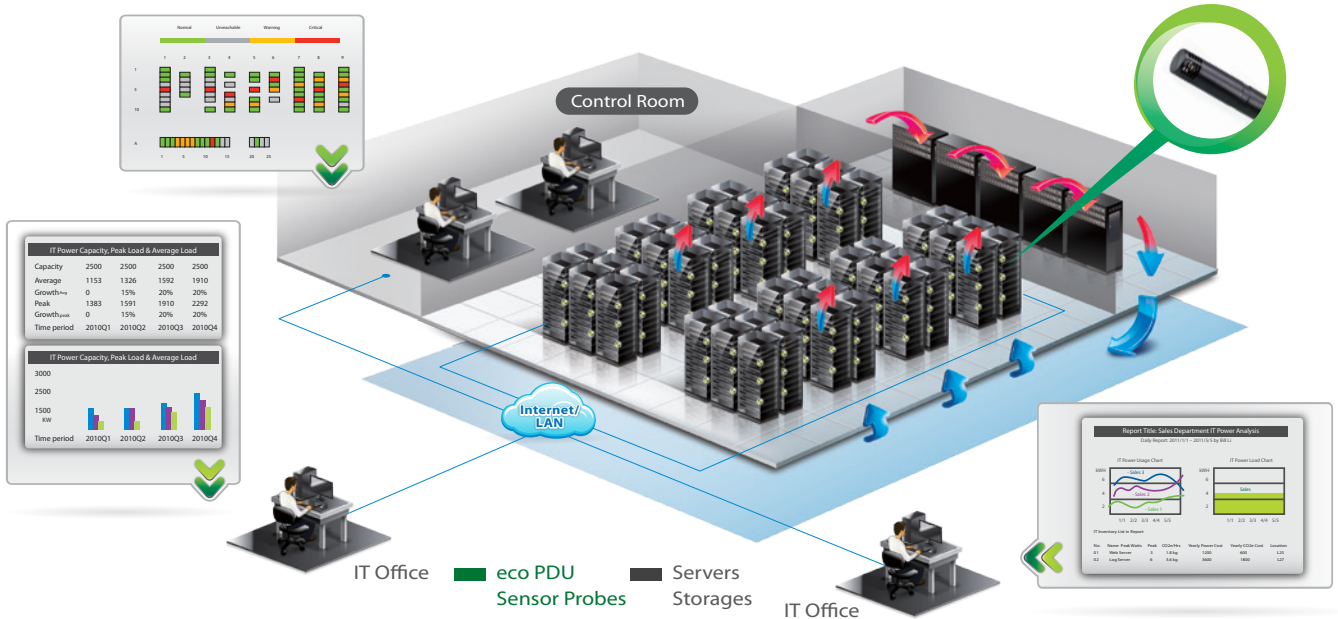
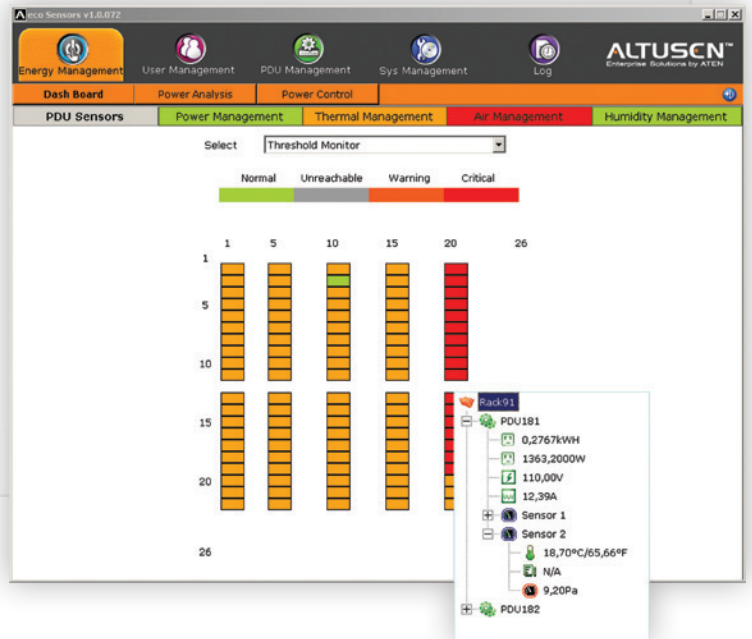
- Secure 128-bit SSL encryption
- Two-level password security
- Login Failures – The number of consecutive failed login attempts and the time a remote computer must wait before trying again can be set
- Configurable user permissions for outlet level access and control

Event Log Support

The event log function records all the events that take place (including user login/logout, timeout, outlet ON/OFF/Reboot by user, user add/delete/changed, eco PDU add/remove and FW upgrade).

eco Sensors Energy Management Software

- Automatic discovery of all PE devices within the same intranet
- Remote real-time power measurement and monitoring
- Remote real-time power outlet management
- Remote real-time environment sensor monitoring
- Plotting/Monitoring of all PE devices
- Exceed threshold alert through SMTP and Syslog
- Power Analysis Report



» TECHNICAL SPECIFICATIONS

Power Distribution

- Space saving 1U rack mount design
- IEC outlet models (NEMA available on request)
- Overcurrent protection and recovery for the PDU
- Remote users can monitor outlet status via their browser
- **Safe shutdown support**
- Separate power for the unit's own power and its power outlets. The user interface is still accessible even when an overload condition trips the devices' circuit breaker

Remote Access

- Remote power control over the network: IPv4, IPv6, HTTP, HTTPS
- eco Sensors Energy Management software
- Supports SNMP Manager V3

Operation

- Local and Remote power outlet control (On, Off, Power Cycle) by individual outlets
- Power-on sequencing: allows setting power-on sequence and delay time for each port
- Easy setup and operation via a browser-based user interface
- **Multiple power control methods – Wake on LAN, System After AC Back, Kill the Power**
- Multibrowser support
- RTC support to keep the timer running during times of no power.
- Supports up to 8 user and 1 administrator accounts (9 concurrent logins)

Management

- Power status measurement at the PDU or Outlet level
- LED indicators for current and IP address at the PDU device and/or outlet levels
- **Real-time current, voltage, and energy consumption displayed in a web-based GUI for monitoring at the PDU level (PE6108 / PE6208) and at the outlet level (PE8108 / PE8208)**
- Environment monitoring – supports external temperature & humidity sensors
- Custom threshold settings for current, voltage, energy consumption, temperature, humidity and pressure
- Threshold notification (On, Off, Recycle, Failure, etc.) via email, SNMP traps, or the built-in sound alarm and warning-lights
- Naming support for outlets
- User access permission per outlet
- Event logging and syslog support
- Upgradeable firmware
- Multilanguage: English, German, French, Spanish, Italian

Security

- Two-level password security
- IP/MAC filtering
- Secure 128-bit SSL encryption
- External authentication support: RADIUS