



### Your ports and cables where you want them

Today's networks have increasing numbers of devices attached to them, both wired and wireless. As wired devices proliferate, it can be difficult to easily and neatly place networked ports where you want them.

NETGEAR ProSAFE Click Switches™ address this issue with an innovative and thoughtful hardware design, including the flexible 1-2-3-4 Click mounting system. The new ProSAFE Click Switches are Gigabit Ethernet switches with an industry-first, bracket mounting system for easy installation. Available in either 8- or 16-Gigabit port configurations, their slim design and internal power supplies enables you to organize wires, secure cables, eliminate bulky power adapters, and improve the overall appearance of wiring closets, training facilities, lab benches, conference rooms, and entertainment centers that require multiple connected devices.

### Highlights

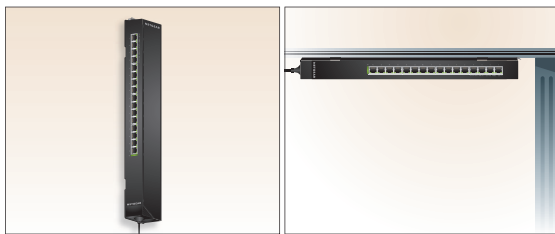
- Unique 1-2-3-4 Click mounting system for flexible placement options
  - Cable management with provided retaining strap
  - Multi-directional power cable to optimize placement
  - Internal power supply to eliminate power brick
  - 2 USB ports for quick access to charging tablets or smartphones (GSS108E only)
  - Turn LED lights ON/OFF for non-distracting operation in dark environments such as next to a TV
- NETGEAR Plus Switch features including:
- VLAN support for traffic segmentation
  - Quality of Service (QoS) for traffic prioritization
  - Auto "denial-of-service" (DoS) prevention (GSS116E only)
  - Troubleshoot connection issues via cable test
  - Loop detection and broadcast storm controls
  - IGMP snooping v1, v2 and v3 support for multicast optimization
  - Rate limiting for better bandwidth allocation
  - Port mirroring for network monitoring
  - Port trunking for bigger uplink bandwidth. (GSS116E only)
- No fan for silent operation
  - Reinforced plastic (GSS108E) or metal case (GSS116E) for rugged durability
  - Jumbo frame support
  - Energy Efficient Ethernet (IEEE802.3az) support for maximum power savings
  - LIFETIME Hardware Warranty\*
  - LIFETIME 24/7 Technical Support
  - LIFETIME Next Business Day Replacement



### Flexible 1-2-3-4 Click Mounting System

The innovative 1-2-3-4 mounting system gives you the flexibility to place the Click Switch in locations where other switches will not go. Whether it's directly on a wall, strapped to a pole, under the meeting table in a conference room or in a server closet, vertical or horizontal, the Click Switch's unique mounting system allow you to control exactly how your ports and cables are deployed.

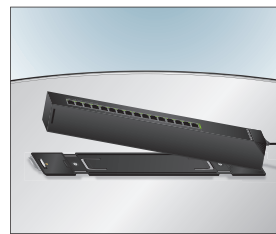
#### Flexible 1-2-3-4 Mounting System



1 Vertical/side mount

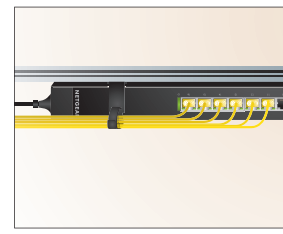
3 Horizontal/side mount

#### Easy to Install

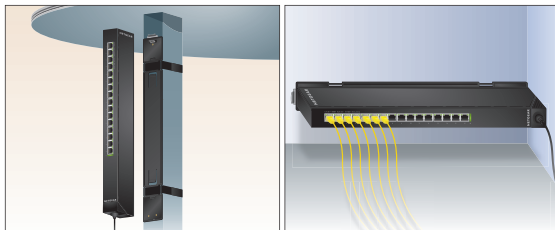


Simply click into the bracket

#### Cable Management

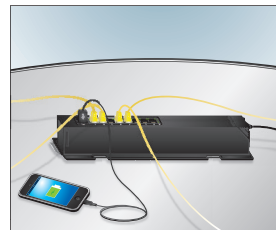


Strap cables to the bracket



2 Vertical/rear mount

4 Horizontal/rear mount



Two USB ports for charging tablets or phones



Strap the cables to the wall

### Hardware at a Glance

Model name	10/100/1000 Base-T RJ45 ports	Internal Power Supply	USB Charging Ports	Case Material
GSS108E	8	yes	10W maximum per port 15W maximum total	Plastic
GSS116E	16	yes	Not applicable	Metal

### Software at a Glance

Management	IP Multicast filtering	EEE (802.3az) Auto-EEE	VLANs	QoS	Port Trunking	Rate Limiting	Jumbo Frame Support
PC Utility Tool Web GUI	IGMP Snooping v1, v2 and v3	Yes	Port-based, IEEE802.1Q-based VLANs	Port-based, IEEE802.1p-based	Port Trunking is supported on GSS116E only.	Yes	Yes

### Features and Benefits

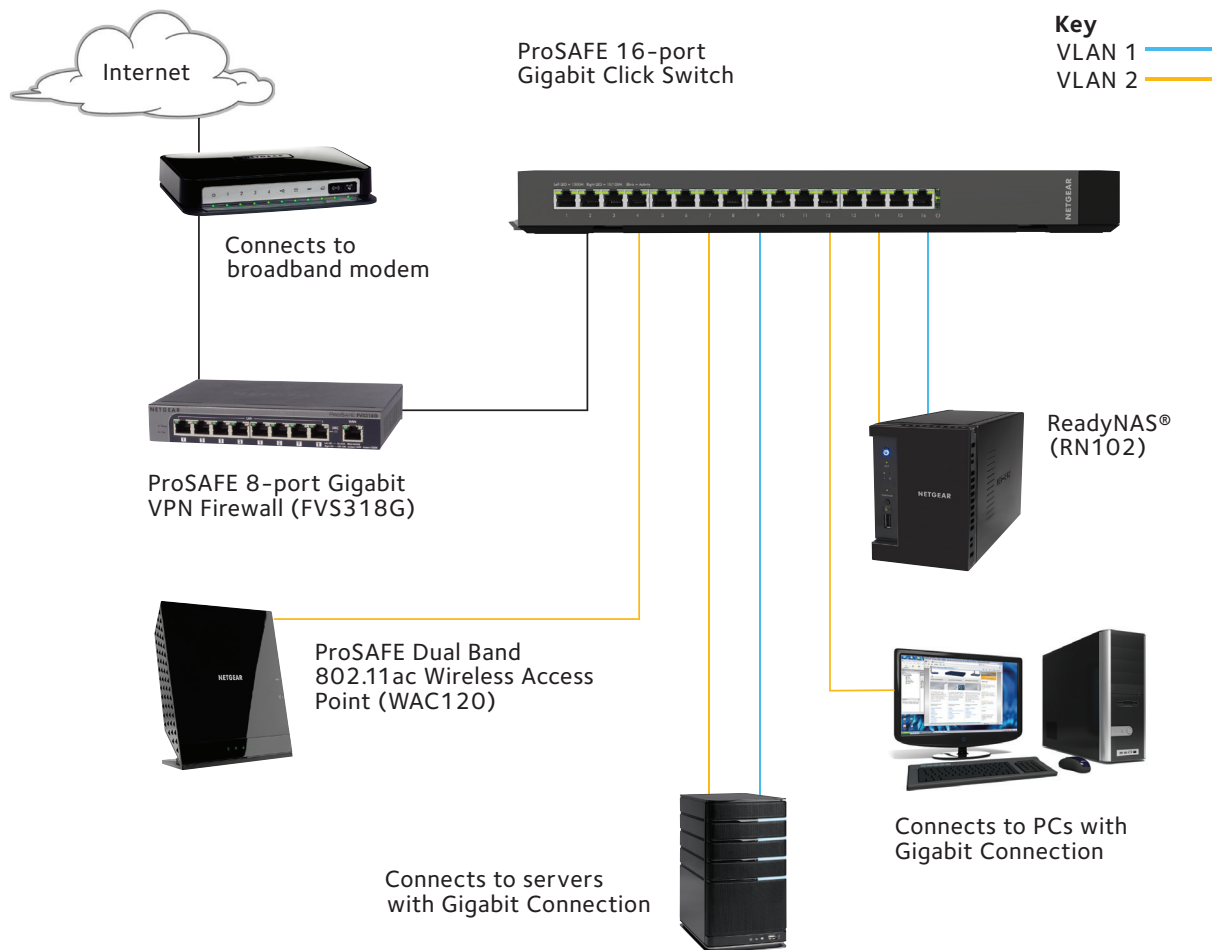
Hardware Features	Benefits
All Gigabit models	Making Click Switch an ideal upgrade for SMB networks combining management capability with higher speed and better performance
Click Mounting System	Flexible deployment for either desktop placement, undertable mount as well as wall mount
Software Features	Benefits
VLAN	Segment network into smaller groups for more secure and efficient use of network resources
QoS	For optimized network performance and better delivery of mission-critical traffic such as voice and video
IGMP Snooping	For improved network efficiency on delivering multicast traffic
Port Trunking	Build up a bigger bandwidth to support aggregated uplink traffic (GSS116E only)
Port Mirroring	For better and quicker network diagnostics and troubleshooting
Cable Test	Easily identify bad Ethernet cables

### Target Application

#### SMB Network Application

Why the NETGEAR Click Switch is the ideal upgrade from Unmanaged Switches for SMB networks:

- Configurable with simple set-up
- Build multiple user groups
- Prioritize voice and video traffic
- Monitor and troubleshoot



### Technical Specifications

PRODUCT SPECIFICATIONS		
Product	GSS108E	GSS116E
Gigabit ports	8	16
Max MAC entries	8K	8K
Buffer size	2Mbits	4Mbits
Energy Efficient Ethernet (IEEE802.3az compliant)	Yes	
PERFORMANCE SPECIFICATION		
Forwarding modes	Store-and-forward	
Bandwidth	16 Gbps	32 Gbps
Priority queuing	Weighted Round Robin (WRR)	
Jumbo frame support	GSS108E supports up to 16000 Bytes. GSS116E supports up to 9000 Bytes.	
Acoustic noise (ANSI-S10.12)	0	0
Mean Time Between Failures (MTBF)	1031177	721479
L2 SERVICES - VLANS		
VLAN (# Supported)	64	128
IEEE 802.1Q VLAN Tagging	Yes	
Port-based VLAN	Yes	
L2 SERVICES - AVAILABILITY		
Port Trunking	No	Yes
Number of LAGs & # of members	NA	2 LAGs & 2 to 8 members.
L2 SERVICES - MULTICAST FILTERING		
IGMP Snooping (v1, v2 and v3)	Yes	
IGMP Snooping queries	No	
Block unknown Multicast	Yes	
Supported Multicast groups	128	128
L3 SERVICES - DHCP		
DHCP Client	Yes	
QUALITY OF SERVICE (QOS)		
Rate limiting	Yes	
DSCP	Yes	
IEEE 802.1p COS	Yes	
Port-based VLAN	Yes	
TOS	Yes	
WRR (Weighted Round Robin)	WRR	
Strict Priority queue technology	No	

### Technical Specifications

Product	GSS108E	GSS116E
<b>IEEE NETWORK PROTOCOLS</b>		
IEEE 802.3i 10BASE-T		Yes
IEEE 802.3u 100BASE-T		Yes
IEEE 802.3ab 1000BASE-T		Yes
IEEE 802.3az Energy Efficient Ethernet		Yes
IEEE 802.3x Full-duplex Flow Control		Yes
IEEE 802.1Q VLAN Tagging		Yes
IEEE 802.1p Class of Service		Yes
IEEE 802.3ad Link Aggregation	No	Yes
<b>MANAGEMENT</b>		
System Password		Yes
PC Utility		Yes
Port Mirroring		Yes
Max number of source ports allowed	1	15
Cable Test utility		Yes
FW Upgrade thru Plus Utility (TFTP)		Yes
Config Download (to Switch) thru Plus Utility		Yes
Config Upload (to Server)		Yes
<b>MISCELLANEOUS FEATURES</b>		
Loop Detection		Yes
DoS Prevention		Yes for GSS116E No for GSS108E
Broadcast Storm Control		Yes
Energy Efficient Ethernet (EEE)		Yes
<b>LEDs</b>		
Per port		Speed, Link, Activity
Per device		Power
LED Control		Activity = Blinking (default); Activity = solid; All LED off
<b>PHYSICAL SPECIFICATIONS</b>		
Dimensions	305x65x35mm	407x70x35mm
Weight	0.44Kg	1.3Kg
Fan	0	0
Power Consumption (when all ports used, line-rate traffic)		
Worst case, all ports used, line-rate traffic, max USB	20.1W	8.4W

### Technical Specifications

Product	GSS108E	GSS116E
<b>ENVIRONMENTAL SPECIFICATIONS</b>		
Operating		
Operating Temperature	0 - 40°C	
Humidity	90% maximum relative humidity, non-condensing	
Altitude	10,000 ft (3,000 m) maximum	
Storage		
Storage Temperature	- 4° to 158°F (-20° to 70°C)	
Humidity	95% maximum relative humidity, non-condensing	
Altitude	10,000 ft (3,000 m) maximum	
Electromagnetic Emissions and Immunity		
Certifications Class (including but not limited to CE mark, commercial, FCC Part 15, VCCI, EN55022 (CISPR 22), C-Tick, EN50082-1, EN55024, CCC)	B	
Safety		
Certifications	CE mark, commercial CSA certified (CSA 22.2 #950) UL listed (UL 1950)/cUL IEC 950/EN 60950	
<b>WARRANTY AND SUPPORT</b>		
Warranty	Lifetime*	
Technical Support	Lifetime Tech Support via chat, 90 day tech support via phone	
Next Business Day Replacement	Lifetime	
<b>PACKAGE CONTENTS</b>		
All models	ProSAFE Click Switch Power cord 1-2-3-4 Mounting Kit Cable retaining straps Quick Install Guide Resource CD with PC Utility software	

### Ordering Information

ORDERING INFORMATION	
<b>GSS108E</b> North America and Latin America Europe Australia United Kingdom Japan China	GSS108E-100NAS GSS108E-100EUS GSS108E-100AJS GSS108E-100EUS GSS108E-100AJS GSS108E-100PRS
<b>GSS116E</b> North America and Latin America Europe Australia United Kingdom Japan China	GSS116E-100NAS GSS116E-100EUS GSS116E-100AJS GSS116E-100EUS GSS116E-100AJS GSS116E-100PRS

\* This product comes with a limited warranty that is valid only if purchased from a NETGEAR authorized reseller, and modifications to product may void the warranty; covers hardware, fans, and internal power supplies—not software or external power supplies; see <http://www.netgear.com/about/warranty/> for details. Lifetime technical support includes basic phone support for 90 days from purchase date and lifetime online chat support when purchased from a NETGEAR authorized reseller.

NETGEAR, the NETGEAR Logo, Click Switches and ProSAFE are trademarks of NETGEAR, Inc. in the United States and/or other countries. Other brand names mentioned herein are for identification purposes only and may be trademarks of their respective holder(s). Information is subject to change without notice. © 2014 NETGEAR, Inc. All rights reserved.