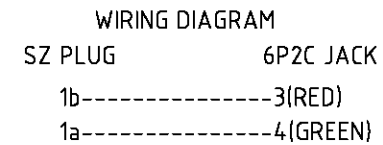
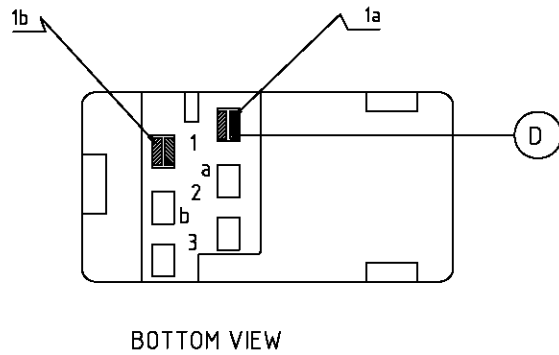
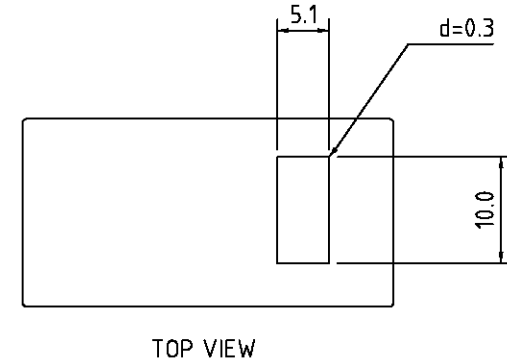
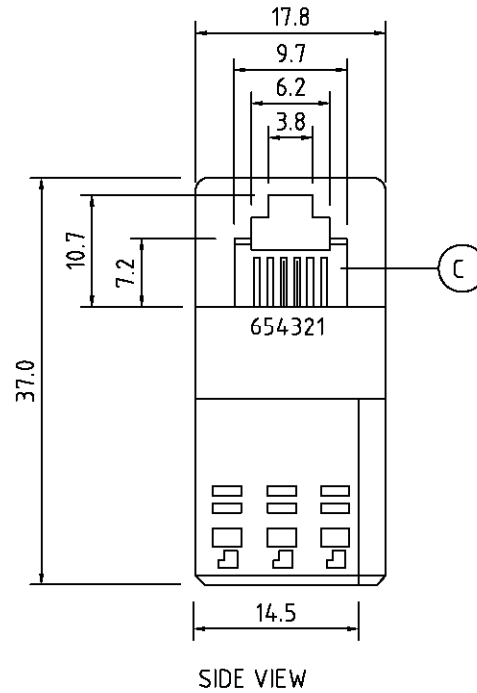
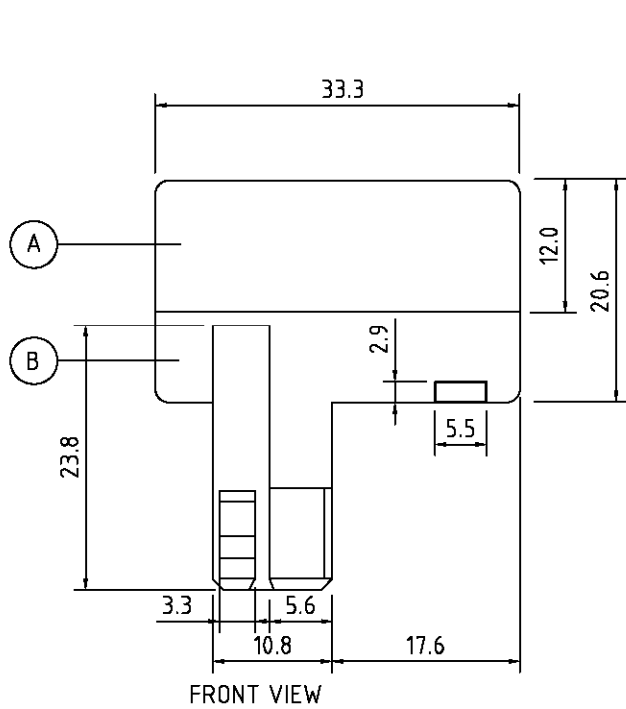


REV.	DATE	FILE No.
1.0	2010-5-7	SZ6-6P2C



SPECIFICATION:

ITEM	PART NAME	MATERIAL	COLOR	QTY.
A	PLUG W/US JACK ADPT.FRONT COVER	ABS	BLACK	1
B	PLUG W/US JACK ADPT.BOTTOM COVER	ABS	BLACK	1
C	6P2C INSET W/3MIC GOLDEN WIRE FLASH	ABS/Cu	BK/GLD	1SET
D	SZ6 TERMINAL	P.B.	NICKEL	2

NOTE:ALL MATERIALS ARE COMPLIANCE TO "RoHS".

CUSTOMER: JESS LINK		Maxxtro [®]
CUST. P/N: JSZ6-6P2C/BK-R		
S/O:2663/10	S/N: 212004	PART No.: JSZ6-6P2C/BK-R
DRAWING No.	SZ-006-15	PART NAME: SWISS PLUG TO 6P2C JACK ADAPTER
DRAWN BY	Lingqi Meng	UNLESS OTHERWISE SPECIFIED, ALL DIMENSIONS ARE IN MM. TOLERANCE:DECIMAL .X ±0.1 .XX ±0.05 ANGLE ±1/2°
CHECKED BY	Zhongjiao/Baifa	
APPROVED BY	ChenHan	
		SHEET 1 OF 1 SCALE NO