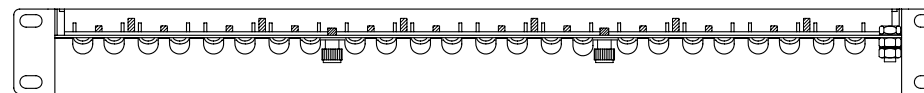


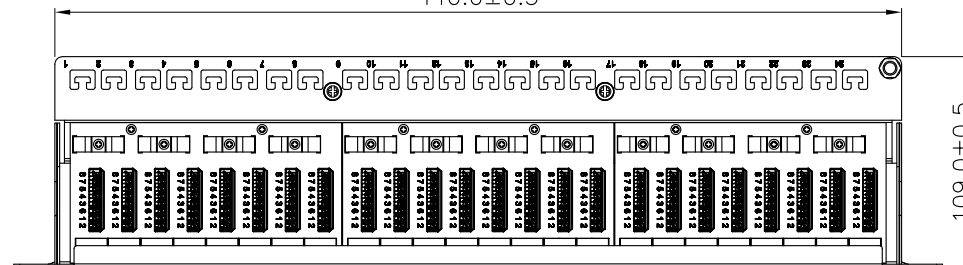
KRONE 45° IDC

RJ45  
RIGHT ANGLE JACK

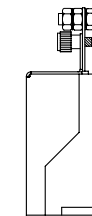
SCALE 1/4



440.0±0.5



109.0±0.5



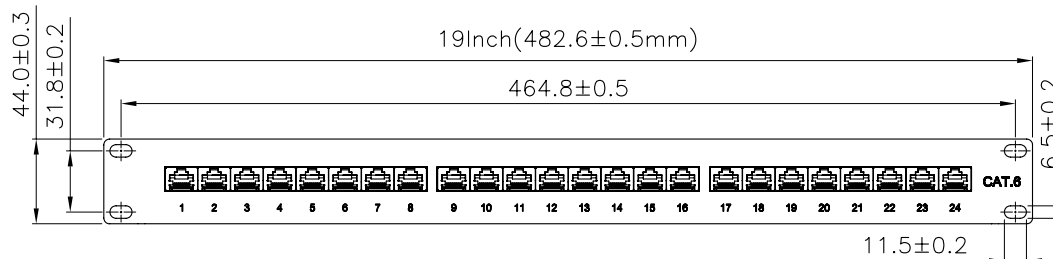
Specification :

Material :

1. Panel : SECC, 1.2 mm thickness with optional color painted.
2. RJ45 Jack :  
2-1. Housing : PBT+Glass Fiber, UL 94V-0.  
2-2. Contact Bracket : PBT+Glass Fiber, UL 94V-0.
3. RJ45 Jack Contact :  
3-1. Material : Phosphor Bronze with Nickel plated.  
3-2. Finish : 50 micro-inch Gold plated on Plug contact area.
4. RJ45 Jack Shield : Bronze With Nickel plated.
5. IDC :  
5-1. Housing : PC+Glass Fiber, UL 94V-2.  
5-2. Terminal : Phosphor Bronze with Tin plated.
6. PCB : FR4, UL 94V-0.

Performance :

- a. T568A & T568B wiring printing on IDC.
- b. Insertion force : 30N max. (IEC 60603-7-5)
- c. Retention strength : 7.7 kg between Jack and Plug.
- d. Operating temperature : -10°C to 60°C. (ISO/IEC 11801, ANSI/TIA/EIA568 B.2)
- e. Life(mating cycles) :  
\*Jack : 750 cycles min. (ISO/IEC 11801, IEC 60603-7-5)  
\*IDC : Suitable for 22-26 AWG stranded and solid wire, Compatible with Krone punch down tool.
- f. The Cat.6 transmission performance is in compliance with the ANSI/TIA/EIA 568 B.2-1 standard.



Remark : AAABB24001441XX

(1)

(1)XX : Patch Panel color

01=Black(RAL9005), 02=Gray(RAL7035)

GENERAL TOLERANCE OF DIMENSIONS X.XXX ±0.005 X.XX ±0.05 X.X ±0.1	DRAWING	27.SEP.2010	WESLEY	<b>Maxxtro®</b>
	CHECK	27.SEP.2010	JANE	
	APPROVAL	27.SEP.2010	JAIMY	
	DATE	NAME	ITEM NO.: AAABB24001441XX	
SCALE	1/4 (A4)	UNIT	mm	DES.: CAT.6 FULL SHIELDED PATCH PANEL
		DRAWING NO.	AAABB24001441XX PPSA24-C6-KRXC(SA3)	
		DRAWING CLASSIFICATION	S	SHEET 1 OF 1

