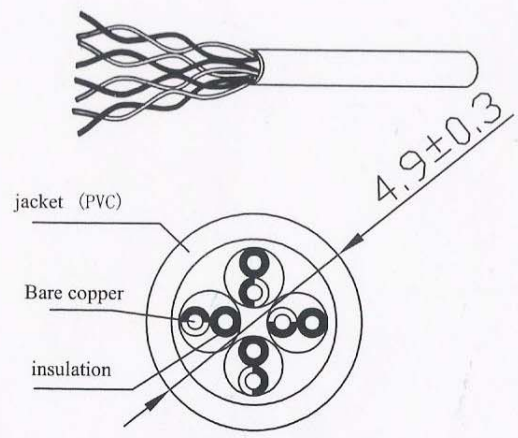
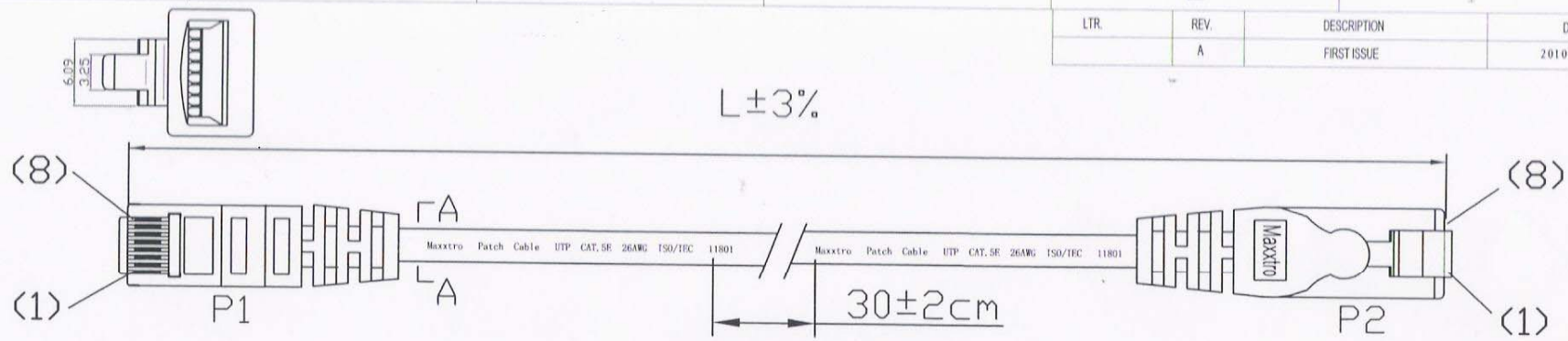
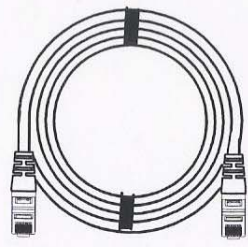


LTR.	REV.	DESCRIPTION	DATE
	A	FIRST ISSUE	2010.12.04



Connecting

P1	568B COLOR	P2
1	WH/ORG	1
2	ORG	2
3	WH/GRN	3
4	BLU	4
5	WH/BLU	5
6	GRN	6
7	WH/BWN	7
8	BWN	8



ITEM No.	LENGTH	PVC COLOR	PACKING
102201	1000 ± 20MM	BLUE 567#	ZB-M
102230	5000 ± 110MM	GREY 687#	ZB-L
102231	5000 ± 110MM	BLUE 567#	ZB-L
102232	5000 ± 110MM	YELLOW 361#	ZB-L
102233	5000 ± 110MM	GREEN 273#	ZB-L
102234	5000 ± 110MM	RED 172#	ZB-L
102241	7500 ± 150MM	BLUE 567#	ZB-L
102244	7500 ± 150MM	RED 172#	ZB-L
102251	10000 ± 200MM	BLUE 567#	ZB-XL
102271	20000 ± 400MM	BLUE 567#	ZB-XL

- SPECIFICATIONS:**
- CONDUCTOR:
 - CONDUCTORS: 26AWG 7*0.155±0.015mm
 - CONDUCTOR INSULATION COLOR CODING: ONE WHITE/ORANGE, ONE ORANGE, ONE WHITE/GREEN, ONE GREEN, ONE BLUE, ONE WHITE/BLUE, ONE WHITE/BROWN, ONE BROWN.
 - CABLE JACKET
 - PRINTING ON THE JACKET: Maxxtro Patch Cable UTP CAT.5E 26AWG ISO/IEC 11801
 - CABLE ASSEMBLY
 - SEE SECTION A-A FOR DIMENSIONS
 - CABLE TIE: Assorted upon request
 - WIRING T568B COLOR
 - CONTACT PLUG: RJ45 8P8C 15u pc UL 94V-2
 - CABLE JACKET COLOR: GY 687#; RED 172#; BLUE 567#; YELLOW 361#; GREEN 273#; BLACK 063#; WHITE 461#; ORANGE 760#; PINK 171#; PURPLE 964#
 - LENGTH: L±3%mm



Maxxtro®

UTP CAT5e CABLE 26AWG

REMARK NO	CHANO	SIGNATURE	DATE
DRAWN BY	Morgan		
CHECKED BY			
AUDITED BY		APPROVED BY	
CRAFT		DATE	2010.12.04

SIGN	REV.	SCALE
	A	
PAGE	OF	