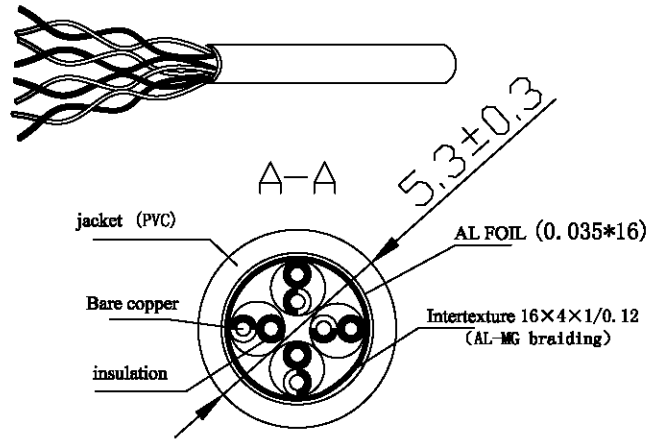
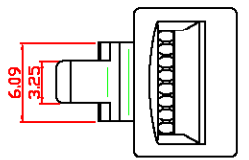
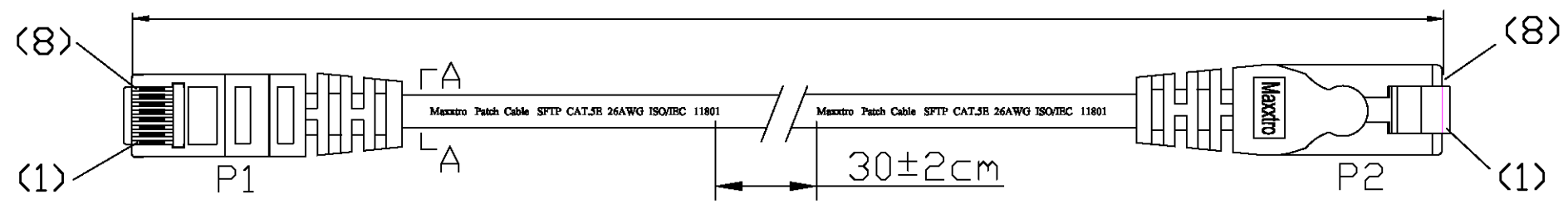


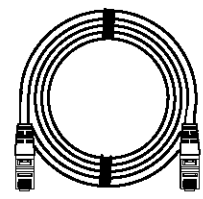
LTR.	REV.	DESCRIPTION	DATE
	A	FIRST ISSUE	2010.12.04

L±3%



Connecting

P1	568B COLOR	P2
1	WH/ORG	1
2	ORG	2
3	WH/GRN	3
4	BLU	4
5	WH/BLU	5
6	GRN	6
7	WH/BWN	7
8	BWN	8



ITBM No.	LENGTH	PVC COLOR	PACKING
102040	1000 ± 20MM	GREY 687#	ZB-M
102082	7500 ± 150MM	YELLOW 361#	ZB-L
102072	5000 ± 110MM	YELLOW 361#	ZB-L

**SPECIFICATIONS:**

1. CONDUCTOR:
  - 1.1 CONDUCTORS: 26AWG 7\*0.155±0.015mm
  - 1.2 CONDUCTOR INSULATION COLOR CODING: ONE WHITE/ORANGE, ONE ORANGE, ONE WHITE/GREEN, ONE GREEN, ONE BLUE, ONE WHITE/BLUE, ONE WHITE/BROWN, ONE BROWN.
2. CABLE JACKET
  - 2.1 PRINTING ON THE JACKET: Maxxtro Patch Cable SFTP CAT.5E 26AWG ISO/IEC 11801
3. CABLE ASSEMBLY
  - 3.1 SEE SECTION A-A FOR DIMENSIONS
  - 3.2 CABLE TIE: Assorted upon request
  - 3.3 WIRING T568B COLOR
  - 3.4 CONTACT PLUG: RJ45 8P8CS 15u pc UL 94V-2
4. CABLE JACKET COLOR: GY 687#; RED 172#; BLUE 567#; YELLOW 361#; GREEN 273#; BLACK 063#; WHITE 461#; ORANGE 760#; PINK 171#; PURPLE 964#
5. LENGTH: L±3%mm

				<b>Maxxtro®</b>				
REMARK NO	CHA.NO	SIGNATURE	DATE			SIGN	REV.	SCALE
							A	
DRAWN BY	Morgan							
CHECKED BY	宋巧							
AUDITED BY	缪传友	APPROVED BY	祁玉军					
CRAFT		DATE	2011.1.6					
				PAGE		OF		
								<b>SFTP CAT5e CABLE 26AWG</b>