
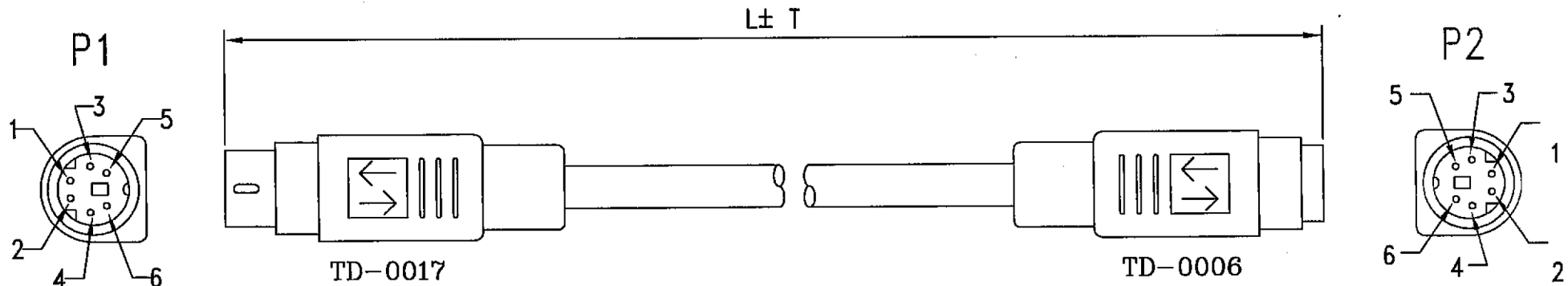


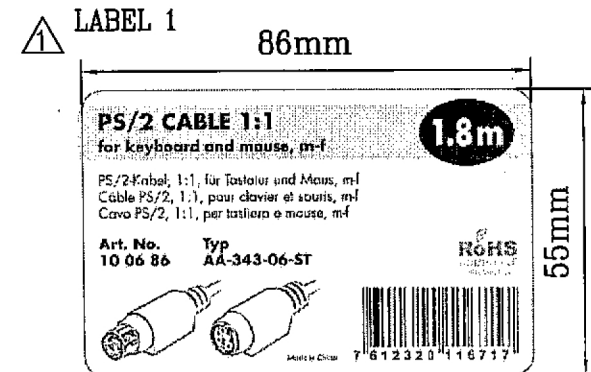
ROHS-COMPLIANT

LTR	REV.	DESCRIPTION	DATE
 6	B	ECR # 101029-1 EDIT LABEL, LENGTH, PACKING ADD ROHS	10/29/10'

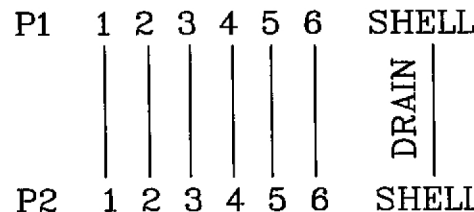


NOTE:

- 1.CABLE: NON-UL 28AWG(7/0.127)*6C+DRAIN WIRE+AL-FOIL/MYLAR
PVC JACKET OD: $\phi 5.0 \pm 0.2\text{mm}$, COLOR: GRAY(NK-A03) .
- 2.CONNECTOR:
P1: MD6P MALE GOLD FLASH CONTACT,NICKEL PLATED SHELL .
P2: MD6P FEMALE GOLD FLASH CONTACT,NICKEL PLATED SHELL .
- 3.HOOD: MOLDED PVC 45P,COLOR: GRAY(NK-A03) .
- 4.ELECTRICAL TEST:100% OPEN SHORT MIS WIRE TEST .
CONTACT RESISTANCE 3Ω MAX .
INSULATION RESISTANCE $20M\Omega$ MIN .
- 5.PACKING: EACH PC / MAXXTRO ZIP BAG + BAR CODE LABEL



APPROVED: _____
DATE: 10/29/10



110-0611-2	100691	BB-343-10-ST	3M	30mm	7 612320 116724	L	LABEL 2
110-0611-1	100686	BB-343-06-ST	1.8M	30mm	7 612320 116717	M	LABEL 1
DWG	PN1	PN2	L	T	BARCODE LABEL	ZIPBAG SIZE	LABEL

Tolerance Inch M/M		
.X	.015	.30
.XX	.010	.10
.XXX	.005	.05
Draw FANNIE 10/29/10'		
Check [Signature]		
Engr		

Maxxtro®			
Title MD6/M - MD6/F CABLE			
Customer P/N			
App'd [Signature]		Customer T-JPC(SW)	
Scale	NONE	Units	m/m
Dwg No. 110-0611		REV: B	Sheet 1/1