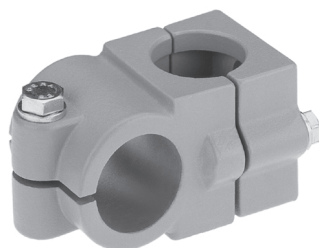
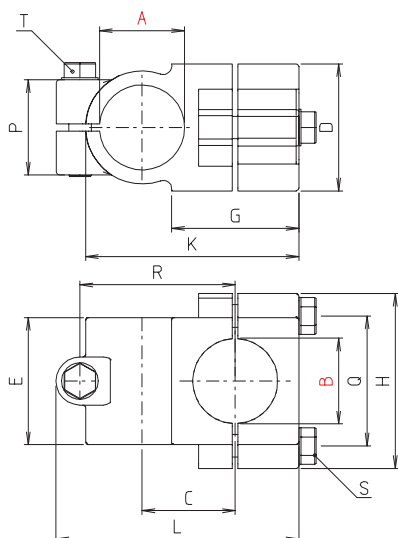


# Kreuzklemmstücke Cross clamps

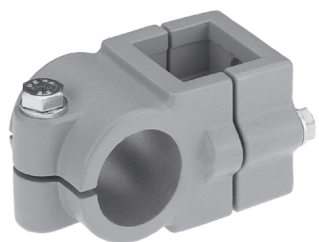
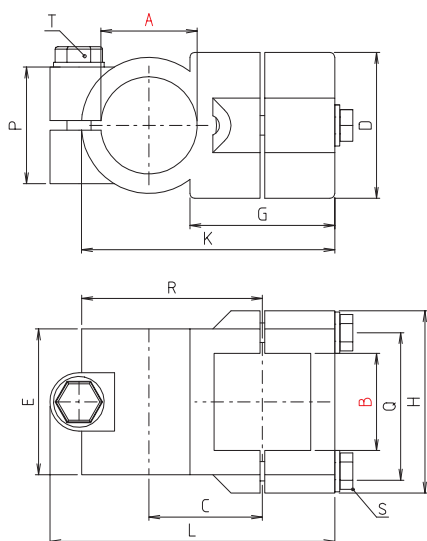
## Industrieform Industrial design

### KR



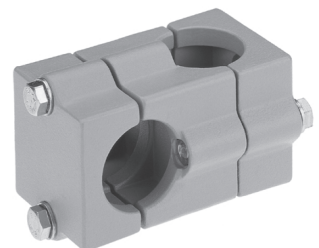
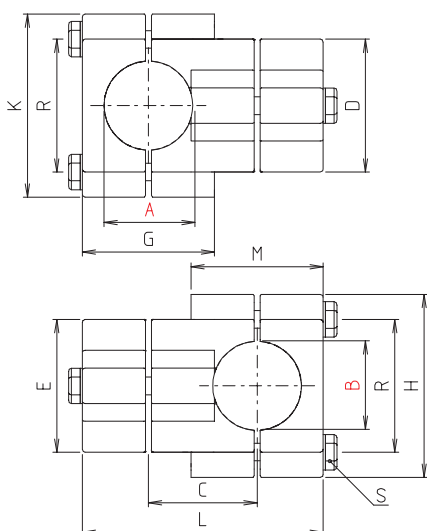
Code-No.	Type	A	B	C	D	E	G	H	K	L	P	Q	R	S	T	m [g]
102 000 020_	KR 20	20,1	20,1	33	45	45	40	62	74,5	85	33	46	55	M8x35	M8x35	338
102 500 020_	KR 25	25,1	25,1	33	45	45	40	62	74,5	85	33	46	55	M8x35	M8x35	287
103 000 020_	KR 30	30,1	30,1	33	45	45	40	62	74,5	85	33	46	55	M8x35	M8x35	257
103 500 020_	KR 35	35,15	35,15	47	60	60	60	75	105	117	48	57	75	M8x45	M8x45	622
104 000 020_	KR 40	40,15	40,15	47	60	60	60	75	105	117	48	57	75	M8x45	M8x45	557

### KVR



Code-No.	Type	A	B	C	D	E	G	H	K	L	P	Q	R	S	T	m [g]
102 000 040_	KVR 20	20,1	20,2	33	45	45	40	62	74,5	85	33	46	55	M8x35	M8x35	332
102 500 040_	KVR 25	25,1	25,2	33	45	45	40	62	74,5	85	33	46	55	M8x35	M8x35	286
103 000 040_	KVR 30	30,1	30,2	33	45	45	40	62	74,5	85	33	46	55	M8x35	M8x35	245
103 500 040_	KVR 35	35,15	35,3	47	60	60	60	75	105	117	48	57	75	M8x45	M10x50	599
104 000 040_	KVR 40	40,15	40,3	47	60	60	60	75	105	117	48	57	75	M8x45	M10x50	525

### KRR



Code-No.	Type	A	B	C	D	E	G	H	K	L	M	R	S	m [g]
102 500 030_	KRR 25	25,15	25,15	37,5	45	45	43,5	62	62	82,5	43,5	46	M8x45	369
103 000 030_	KRR 30	30,15	30,15	37,5	45	45	43,5	62	62	82,5	43,5	46	M8x45	352
103 500 030_	KRR 35	35,2	35,2	50	60	60	60	75	75	110	60	57	M8x60	668
104 000 030_	KRR 40	40,2	40,2	50	60	60	60	75	75	110	60	57	M8x60	645

Bestellhinweise siehe Seite 6-7 Order instructions see pages 6-7