

Energy meets efficiency

MASTER LEDbulb Designer



MASTER LEDbulb Designer combines warm, incandescent-like light with customizable MASTER LEDlamp covers to offer design freedom in a simple retrofit LED bulb like never before. Ideal for open fixtures where the bulb is fully visible, it offers the excellent light performance, dimming and energy savings of MASTER LEDbulbs along with a uniquely customizable design. It is particularly suited to the hospitality and retail industry, where aesthetic design is especially important. The elegant MASTER LEDlamp covers can be individually selected and installed by the user to match the surrounding décor, also as it changes over the extended lifetime of the lamp. The innovative lamp design ensures excellent light quality, and the broadly compatible dimmable driver helps create the desired ambiance while further improving efficiency

Benefits

- freedom to design your lamp with a choice of lamp covers
- dimming with validated leading edge dimmers
- 80% energy saving (short payback time)

Features

- customizable lamp cover
- dimmable
- lifetime of 25,000 hours
- low energy consumption: 7 → 40 W

Application

- suitable for general lighting/ambiance creation in e.g. hotels, restaurants, shops and offices

Related products



Designer 7-40W, E27



Designer 7-40W, B22

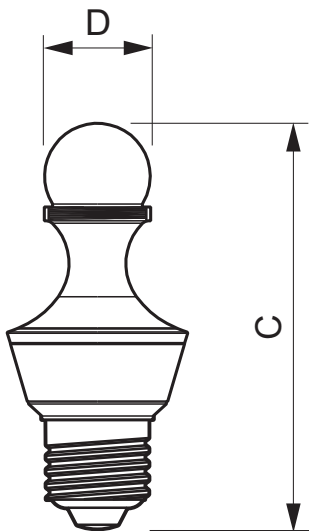


Lamp Cover Convex



Lamp Cover Concave

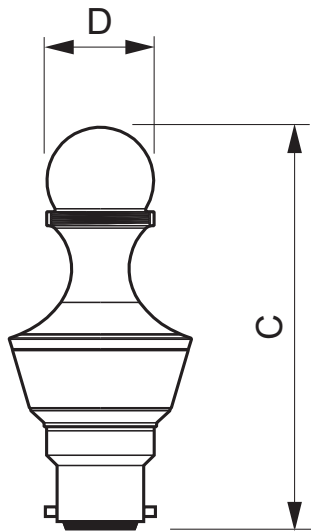
Dimensional drawing



E27 Designer

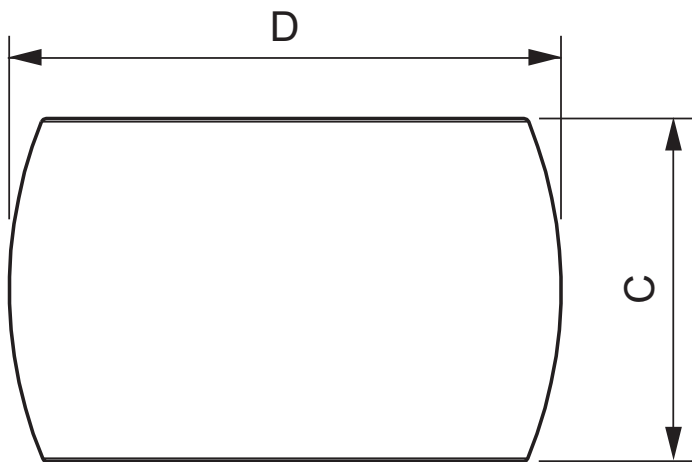
Product	C (Norm)	C1 (Max)	D (Norm)	D1 (Norm)
LED 7-40W E27 WW 2700K Designer	101.5	-	45.3	-

Dimensional drawing



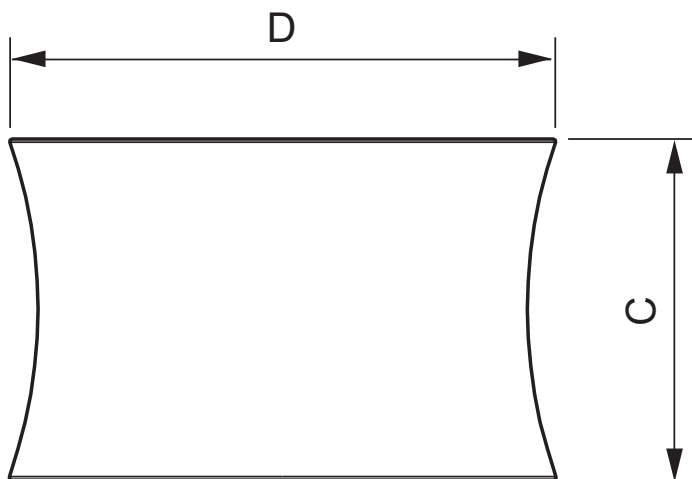
B22 Designer

Product	C (Norm)	C1 (Max)	D (Norm)	D1 (Norm)
LED 7-40W B22 WW 2700K Designer	101.5	-	45.3	-



Lamp cover convex

Product	C (Norm)	C1 (Max)	D (Norm)	D1 (Norm)
LED Lamp Cover Convex	39.8	-	64	-



Lamp cover concave

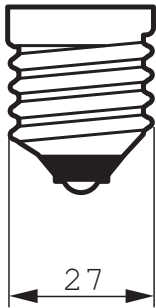
Product	C (Norm)	C1 (Max)	D (Norm)	D1 (Norm)
LED Lamp Cover Concave	39.8	-	63.6	-

General Characteristics

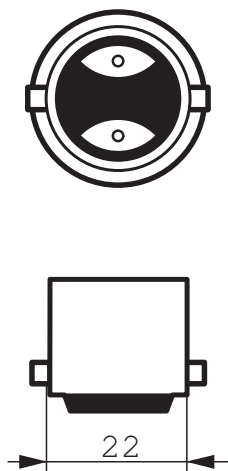
Order code	Full product name	Cap-Base	Bulb	Bulb Finish	Rated Life-time (hours)	Rated Life-time (years)
929000204902	MASTER LEDbulb 7-40W E27 2700K Designer	E27	-	-	25000	15
929000205002	MASTER LEDbulb 7-40W B22 2700K Designer	B22	-	-	25000	15

Order code	Full product name	Cap-Base	Bulb	Bulb Finish	Rated Life-time (hours)	Rated Life-time (years)
929000208602	MASTER LEDbulb Lamp Cover Convex	-	Cover Convex	-	-	-
929000208702	MASTER LEDbulb Lamp Cover Concave	-	Cover Concave	-	-	-

Installation diagrams



E27



B22

Light Technical Characteristics

Order code	Full product name	Color Code	Beam Angle	Color rendering index	Color Temperature	Rated Luminous Flux	LLMF - end nominal lifetime
929000204902	MASTER LEDbulb 7-40W E27 2700K Designer	VVV	-	80	2700	470	70
929000205002	MASTER LEDbulb 7-40W B22 2700K Designer	VVV	-	80	2700	470	70
929000208602	MASTER LEDbulb Lamp Cover Convex	-	0	-	0	-	-
929000208702	MASTER LEDbulb Lamp Cover Concave	-	0	-	0	-	-

Electrical Characteristics

Order code	Full product name	Wattage	Voltage	Line Frequency	Dimmable	Wattage Equivalent	Rated Wattage	Starting Time
929000204902	MASTER LEDbulb 7-40W E27 2700K Designer	7	230	50-60	Yes	40	7.0	0.5 (max)
929000205002	MASTER LEDbulb 7-40W B22 2700K Designer	7	230	50-60	Yes	40	7.0	0.5 (max)
929000208602	MASTER LEDbulb Lamp Cover Convex	0	0	-	-	-	-	-
929000208702	MASTER LEDbulb Lamp Cover Concave	0	0	-	-	-	-	-

Environmental characteristics

Order code	Full product name	Energy Efficiency Label (EEL)
929000204902	MASTER LEDbulb 7-40W E27 2700K Designer	Class A
929000205002	MASTER LEDbulb 7-40W B22 2700K Designer	Class A

Measuring Conditions

Order code	Full product name	Switching cycle
929000204902	MASTER LEDbulb 7-40W E27 2700K Designer	20000x
929000205002	MASTER LEDbulb 7-40W B22 2700K Designer	20000x



© 2011 Koninklijke Philips Electronics N.V.
All rights reserved.

Specifications are subject to change without notice. Trademarks are the property of Koninklijke Philips Electronics N.V. or their respective owners.

www.philips.com/lighting

2011, December 20
data subject to change