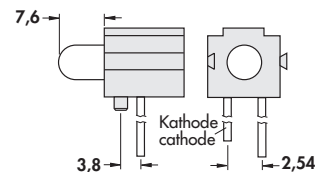
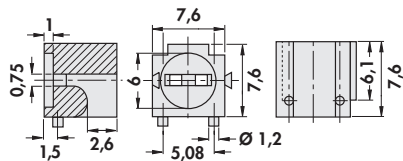
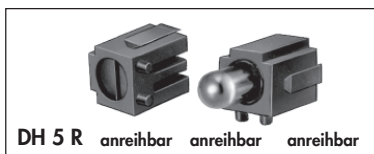
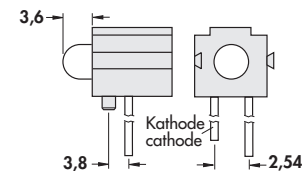
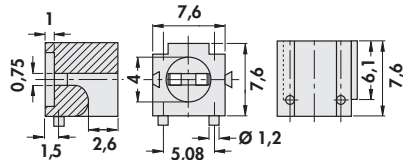
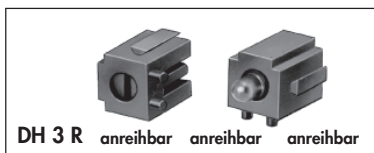
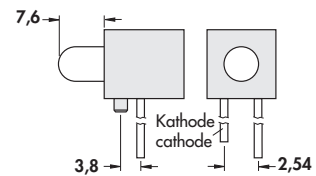
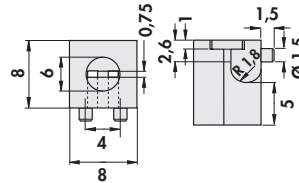
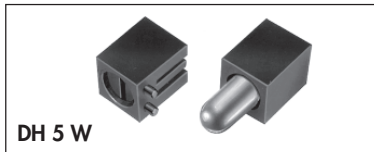
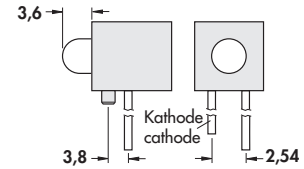
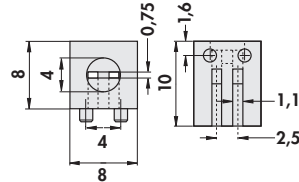
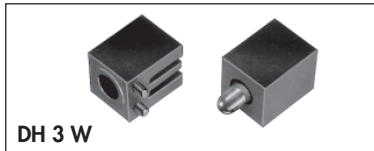


Leuchtdiodenhalter für
Leiterplattenmontage

LED-Holder for
PCB Assembly

Supports pour DELs pour
montage de PCBs



Art.Nr. ohne LED Art.No. without LED Art.n° sans DEL	LED DEL	an Art.Nr.anhängen,falls mit montierter LED gewünscht add to Art.No.,if required with mounted LED à ajouter au Art.n°, si vous désirez un DEL monté	Emissionsfarbe Emmission colour Couleur d'émission	Gehäusefarbe Case colour Couleur de boîtier
DH 3 R DH 3 W	3 mm	...S 34 M	superrot/super red/rouge super	farblich klar, colour clear,
		...Y 34 M	gelb/yellow/jaune	clair coloré
		...G 33 M	grün/green/vert	farblos klar, colourless clear, clair incolore
		...S 36 K	superrot/super red/rouge super	farblich diffus
		...Y 36 K	gelb/yellow/jaune	colour diffused
		...G 36 J	grün/green/vert	diffus coloré
DH 5 R DH 5 W	5 mm	...S 52 Q	superrot/super red/rouge super	farblich klar, colour clear,
		...Y 52 Q	gelb/yellow/jaune	clair coloré,
		...G 51 Q	grün/green/vert	farblos klar, colourless clear, clair incolore
		...S 56 K	superrot/super red/rouge super	farblich diffus
		...Y 56 K	gelb/yellow/jaune	colour diffused
		...G 56 H	grün/green/vert	diffus coloré
		...S 96 FH	superrot/super red/rouge super	farblich diffus (Niedrigstrom)
		...Y 96 FH	gelb/yellow/jaune	colour diffused (Low Current)
...G 96 FH	grün/green/vert	diffus coloré (courant de basse tension)		

Material: glasfaserverstärktes Polyamid

Material: glass fibre reinforced polyamid

Matériau: Polyamide renforcé de fibre de verre

K 9

Systemgehäuse RackCase
Teilfrontplatten
Frontplatten nach Kundenwunsch
Technische Daten der LED's

System Cases RackCase
Part Front Panels
Front Panels to Customer's Request
Technical Data of the LED's

Boîtiers à système RackCase
Faces avant partielles
Faces avant à la demande du client
Caractéristiques de DEL's
→ M 39 – M 52
→ M 109 – M 118
→ L 25 – 26
→ K 17 – 18