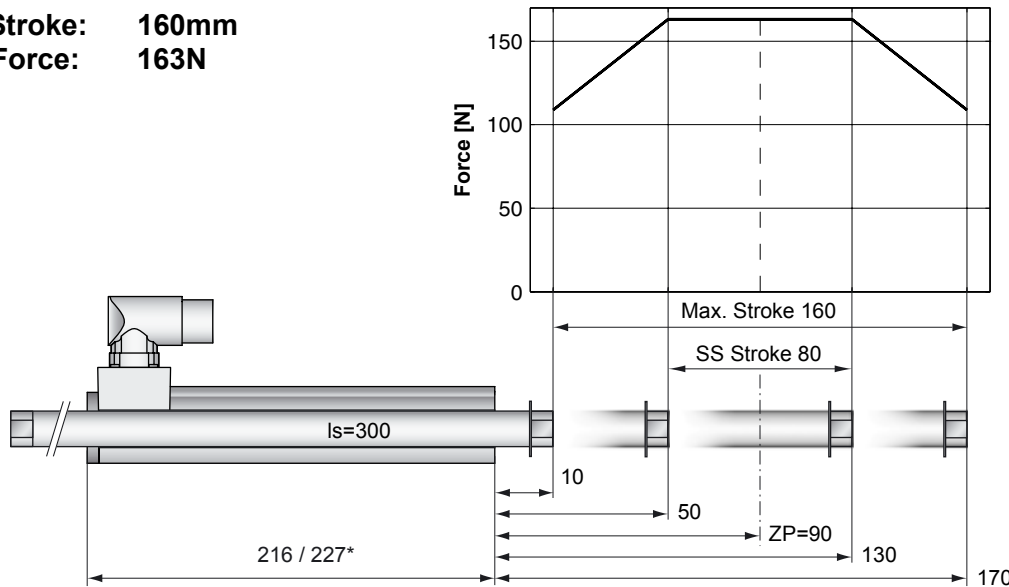


**Max. Stroke:** 160mm  
**Peak Force:** 163N



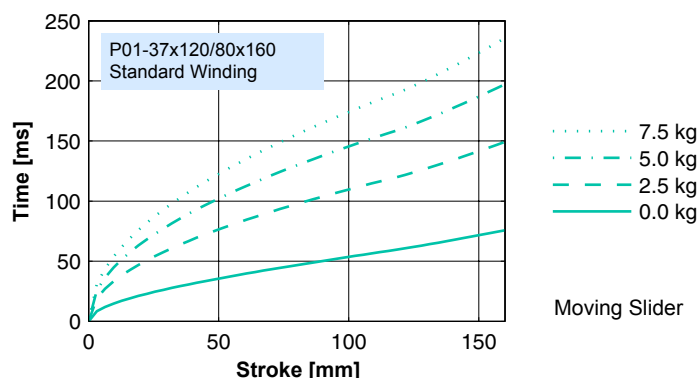
**Standard Winding:**  
 — E1100-HC, 72VDC  
 — E1100, 72VDC & E1001, 72VDC

Dimensions in mm  
 \*Cable Type

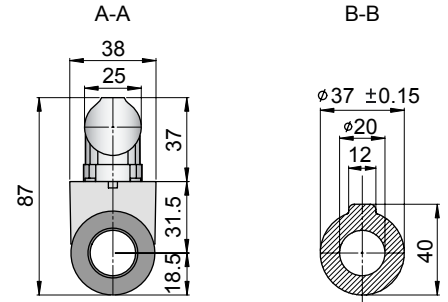
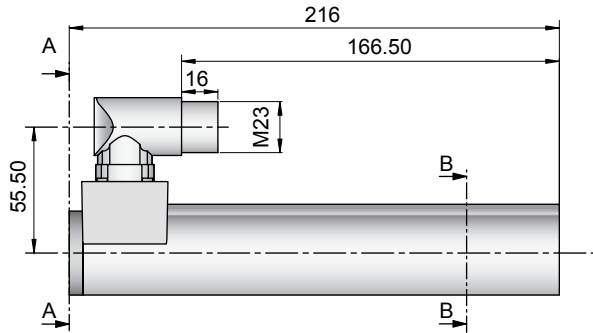
## Motor Specification

P01-		Connector Type	Cable Type
		37x120/80x160-C	37x120/80x160 37x120/80x160-C20
Stroke Max.	mm (in)	160 (6.30)	160 (6.30)
Stroke SS	mm (in)	80 (3.15)	80 (3.15)
Peak Force E1100-HC	N (lbf)	163 (36.7)	163 (36.7)
Peak Force E1100 / E1001	N (lbf)	163 (36.7)	163 (36.7)
Cont. Force	N (lbf)	29 (6.5)	29 (6.5)
Cont. Force Fan cooling	N (lbf)	54 (12.2)	54 (12.2)
Border Force	%	67	67
Force Constant	N/A (lbf/A)	20.4 (4.59)	20.4 (4.59)
Max. Current @ 72VDC	A	8.0	8.0
Max. Current @ 48VDC	A	6.3	6.3
Max. Velocity @ 72VDC	m/s (in/s)	3.2 (128)	3.2 (128)
Max. Velocity @ 48VDC	m/s (in/s)	2.2 (85)	2.2 (85)
Phase Resist. 25/80 °C	Ohm	6.2/7.5	6.2/7.5
Phase Inductance	mH	3.1	3.1
Thermal Resistance	°K/W	3.6	3.6
Thermal Time Const.	sec	2900	2900
Stator Diameter	mm (in)	37 (1.46)	37 (1.46)
Stator Length	mm (in)	216 (8.50)	227 (8.94)
Stator Mass	g (lb)	740 (1.63)	740 (1.63)
Slider Diameter	mm (in)	20 (0.79)	20 (0.79)
Slider Length	mm (in)	300 (11.81)	300 (11.81)
Slider Mass	g (lb)	599 (1.32)	599 (1.32)
Position Repeatability	mm (in)	±0.05 (±0.0020)	±0.05 (±0.0020)
Linearity	%	±0.30	±0.30
Position Rep. with ES	mm (in)	±0.01 (±0.0004)	±0.01 (±0.0004)
Linearity with ES	mm (in)	±0.01 (±0.0004)	±0.01 (±0.0004)

## Position-Time Diagram

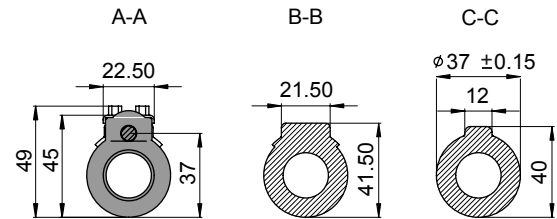
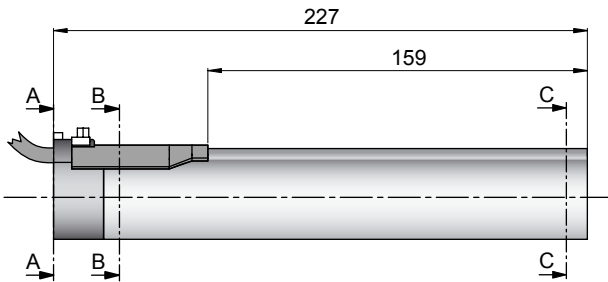


## Connector Type



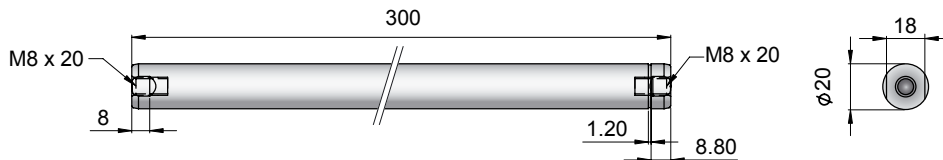
Linear Motor		Stator		Slider	
Type	Art.No	Type	Art. No.	Type	Art. No.
P01-37x120/80x160-C	-->	PS01-37x120-C	0150-1223	& PL01-20x300/220	0150-1348

## Cable Type



Linear Motor		Stator		Slider	
Type	Art.No	Type	Art. No.	Type	Art. No.
P01-37x120/80x160	-->	PS01-37x120	0150-1204	& PL01-20x300/220	0150-1348
P01-37x120/80x160-C20	-->	PS01-37x120-C20	0150-1237	& PL01-20x300/220	0150-1348

## Slider



Standard Type	Slider Standard	PL01-20x300/220	0150-1348
Special Sliders	Heavy Duty Slider with WC/C-Coating	PL02-20x300/220	0150-1349
	Hollow Slider hole diameter 6.5mm	PL01-20x300/220-L	0150-1351
	High Clearance Slider d=19mm, m=541g	PL01-19x300/220	0150-1449

## Connectors

### Motor Connector Wiring

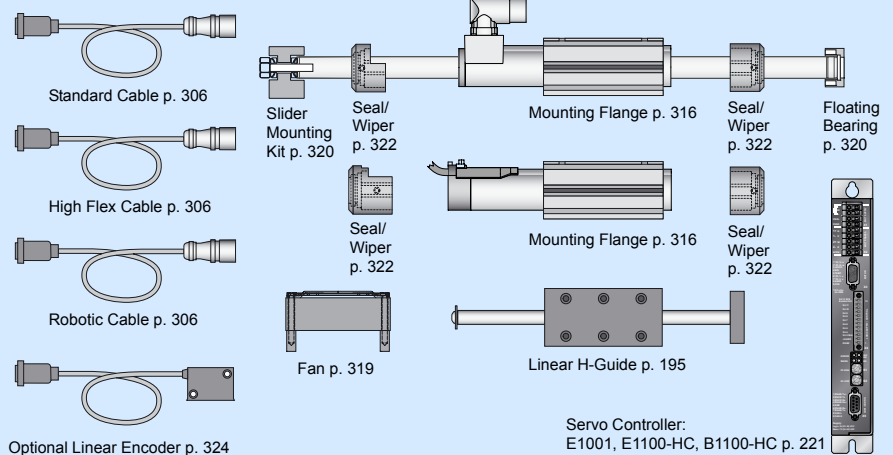
Cable Length:  
P01-37x120... 1.5m  
P01-37x120...-C20 0.2m

P01-37...-C  
P01-37...-C20

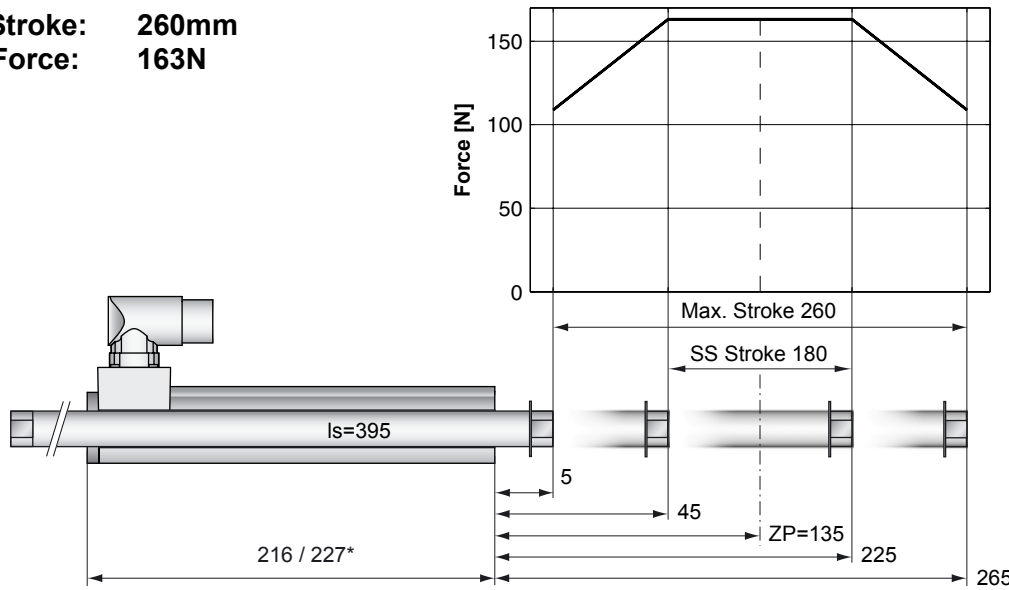
P01-37...

Ph	Color	Letter	Order
Ph 1+	red	A	1
Ph 1-	pink	B	2
Ph 2+	blue	C	3
Ph 2-	grey	D	4
+5VDC	white	E	5
GND	inner Shield	F	6
Sine	yellow	G	7
Cosine	green	H	8
Temp.	black	L	9
Shield	outer Shield	Case	10

## Accessoires



**Max. Stroke: 260mm**  
**Peak Force: 163N**



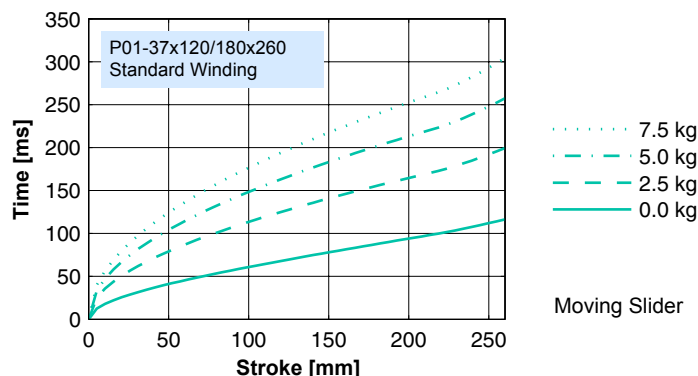
**Standard Winding:**  
 — E1100-HC, 72VDC  
 — E1100, 72VDC & E1001, 72VDC

Dimensions in mm  
 \*Cable Type

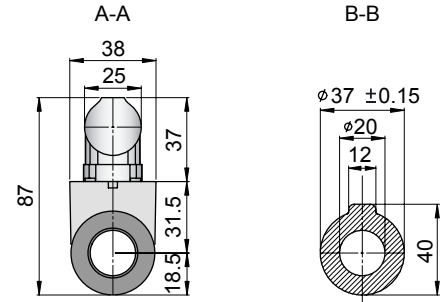
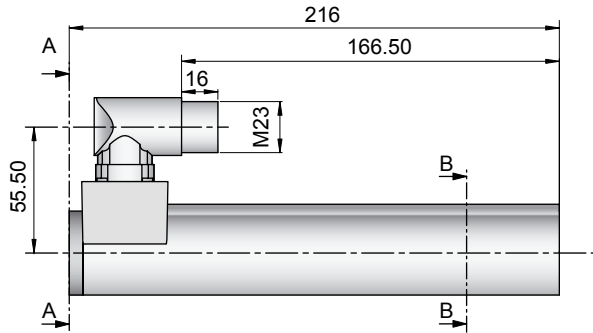
## Motor Specification

P01-		Connector Type	Cable Type
		37x120/180x260-C	37x120/180x260 37x120/180x260-C20
Stroke Max.	mm (in)	260 (10.24)	260 (10.24)
Stroke SS	mm (in)	180 (7.09)	180 (7.09)
Peak Force E1100-HC	N (lbf)	163 (36.7)	163 (36.7)
Peak Force E1100 / E1001	N (lbf)	163 (36.7)	163 (36.7)
Cont. Force	N (lbf)	29 (6.5)	29 (6.5)
Cont. Force Fan cooling	N (lbf)	54 (12.2)	54 (12.2)
Border Force	%	67	67
Force Constant	N/A (lbf/A)	20.4 (4.59)	20.4 (4.59)
Max. Current @ 72VDC	A	8.0	8.0
Max. Current @ 48VDC	A	6.3	6.3
Max. Velocity @ 72VDC	m/s (in/s)	3.2 (128)	3.2 (128)
Max. Velocity @ 48VDC	m/s (in/s)	2.2 (85)	2.2 (85)
Phase Resist. 25/80 °C	Ohm	6.2/7.5	6.2/7.5
Phase Inductance	mH	3.1	3.1
Thermal Resistance	°K/W	3.6	3.6
Thermal Time Const.	sec	2900	2900
Stator Diameter	mm (in)	37 (1.46)	37 (1.46)
Stator Length	mm (in)	216 (8.50)	227 (8.94)
Stator Mass	g (lb)	740 (1.63)	740 (1.63)
Slider Diameter	mm (in)	20 (0.79)	20 (0.79)
Slider Length	mm (in)	395 (15.55)	395 (15.55)
Slider Mass	g (lb)	829 (1.83)	829 (1.83)
Position Repeatability	mm (in)	±0.05 (±0.0020)	±0.05 (±0.0020)
Linearity	%	±0.20	±0.20
Position Rep. with ES	mm (in)	±0.01 (±0.0004)	±0.01 (±0.0004)
Linearity with ES	mm (in)	±0.01 (±0.0004)	±0.01 (±0.0004)

## Position-Time Diagram

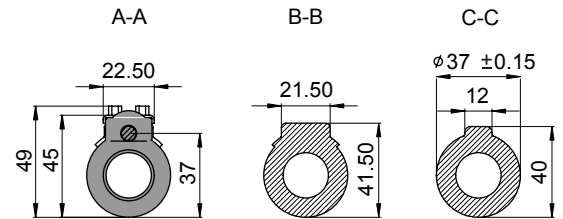
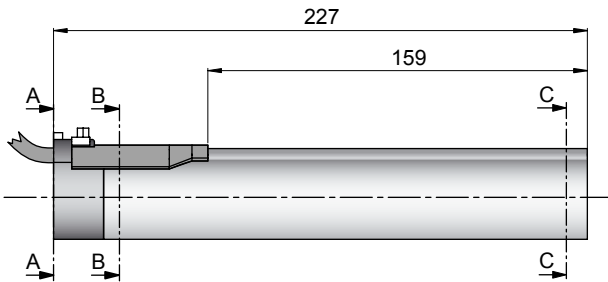


## Connector Type



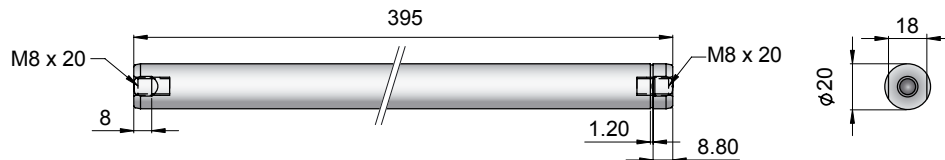
Linear Motor		Stator		Slider	
Type	Art.No	Type	Art. No.	Type	Art. No.
P01-37x120/180x260-C	-->	PS01-37x120-C	0150-1223	& PL01-20x395/320	0150-1318

## Cable Type



Linear Motor		Stator		Slider	
Type	Art.No	Type	Art. No.	Type	Art. No.
P01-37x120/180x260	-->	PS01-37x120	0150-1204	& PL01-20x395/320	0150-1318
P01-37x120/180x260-C20	-->	PS01-37x120-C20	0150-1237	& PL01-20x395/320	0150-1318

## Slider



Standard Type	Slider Standard	PL01-20x395/320	0150-1318
Special Sliders	Heavy Duty Slider with WC/C-Coating	PL02-20x395/320	0150-1319
	Hollow Slider hole diameter 6.5mm	PL01-20x395/320-L	0150-1354
	High Clearance Slider d=19mm, m=748g	PL01-19x395/320	0150-1452

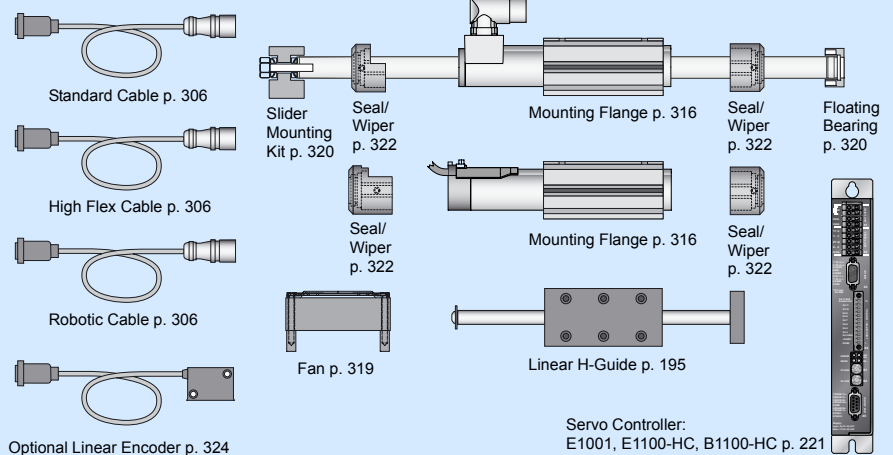
## Connectors

### Motor Connector Wiring

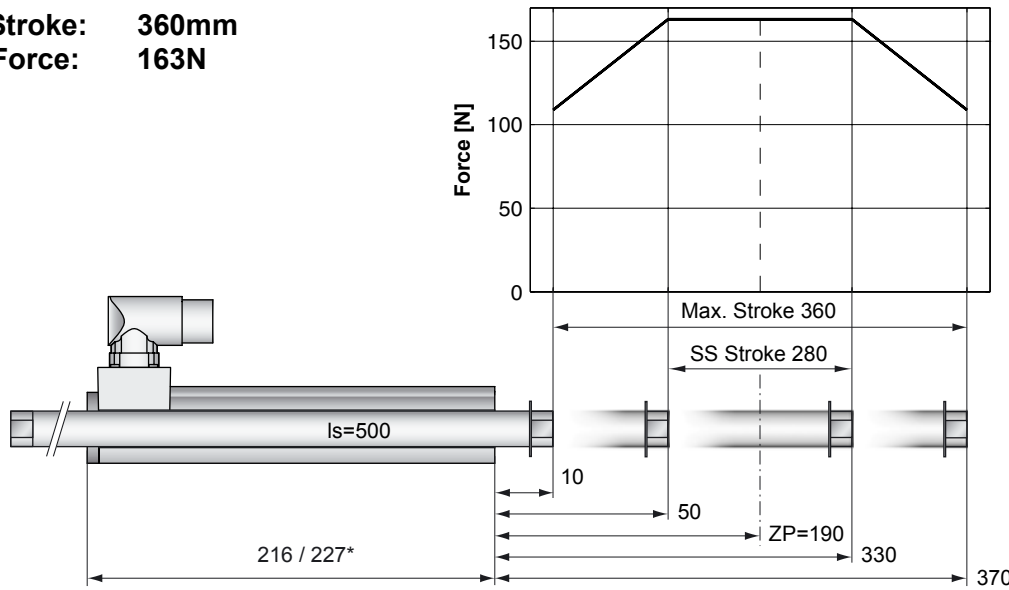
Cable Length:  
P01-37x120... 1.5m  
P01-37x120...-C20 0.2m

		P01-37...-C P01-37...-C20	P01-37...
Ph 1+	red	A	1
Ph 1-	pink	B	2
Ph 2+	blue	C	3
Ph 2-	grey	D	4
+5VDC	white	E	5
GND	inner Shield	F	6
Sine	yellow	G	7
Cosine	green	H	8
Temp.	black	L	9
Shield	outer Shield	Case	10

## Accessoires



**Max. Stroke:** 360mm  
**Peak Force:** 163N



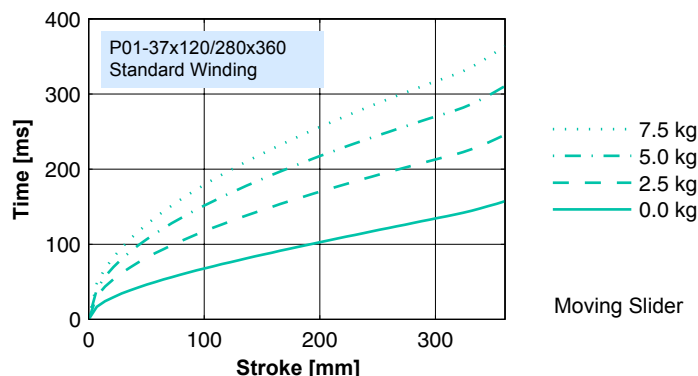
**Standard Winding:**  
 — E1100-HC, 72VDC  
 — E1100, 72VDC & E1001, 72VDC

Dimensions in mm  
 \*Cable Type

## Motor Specification

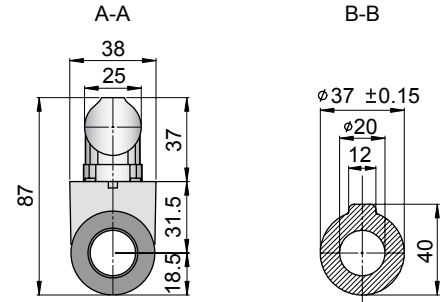
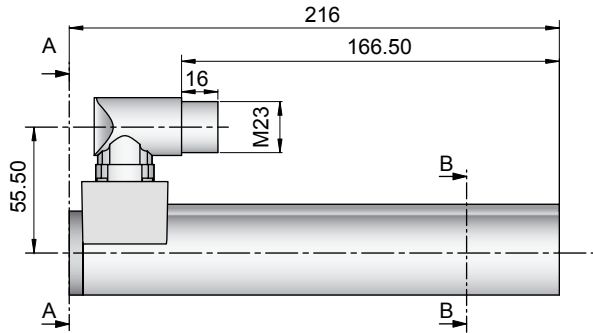
P01-		Connector Type	Cable Type
		37x120/280x360-C	37x120/280x360 37x120/280x360-C20
Stroke Max.	mm (in)	360 (14.17)	360 (14.17)
Stroke SS	mm (in)	280 (11.02)	280 (11.02)
Peak Force E1100-HC	N (lbf)	163 (36.7)	163 (36.7)
Peak Force E1100 / E1001	N (lbf)	163 (36.7)	163 (36.7)
Cont. Force	N (lbf)	29 (6.5)	29 (6.5)
Cont. Force Fan cooling	N (lbf)	54 (12.2)	54 (12.2)
Border Force	%	67	67
Force Constant	N/A (lbf/A)	20.4 (4.59)	20.4 (4.59)
Max. Current @ 72VDC	A	8.0	8.0
Max. Current @ 48VDC	A	6.3	6.3
Max. Velocity @ 72VDC	m/s (in/s)	3.2 (128)	3.2 (128)
Max. Velocity @ 48VDC	m/s (in/s)	2.2 (85)	2.2 (85)
Phase Resist. 25/80 °C	Ohm	6.2/7.5	6.2/7.5
Phase Inductance	mH	3.1	3.1
Thermal Resistance	°K/W	3.6	3.6
Thermal Time Const.	sec	2900	2900
Stator Diameter	mm (in)	37 (1.46)	37 (1.46)
Stator Length	mm (in)	216 (8.50)	227 (8.94)
Stator Mass	g (lb)	740 (1.63)	740 (1.63)
Slider Diameter	mm (in)	20 (0.79)	20 (0.79)
Slider Length	mm (in)	500 (19.69)	500 (19.69)
Slider Mass	g (lb)	1064 (2.35)	1064 (2.35)
Position Repeatability	mm (in)	±0.05 (±0.0020)	±0.05 (±0.0020)
Linearity	%	±0.20	±0.20
Position Rep. with ES	mm (in)	±0.01 (±0.0004)	±0.01 (±0.0004)
Linearity with ES	mm (in)	±0.01 (±0.0004)	±0.01 (±0.0004)

## Position-Time Diagram



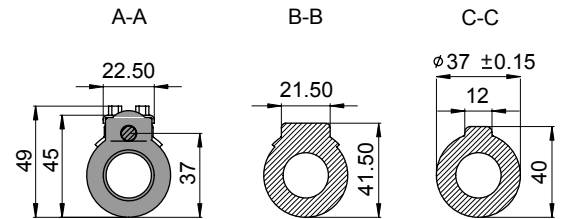
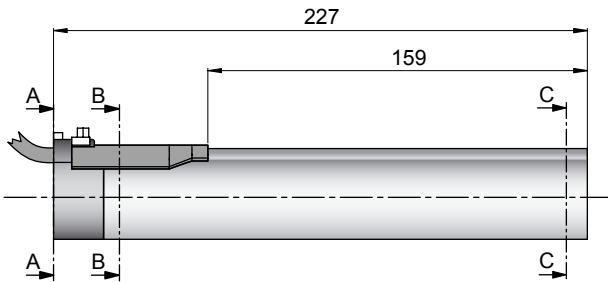
Moving Slider

## Connector Type



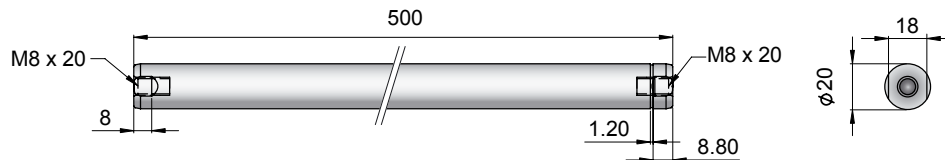
Linear Motor		Stator		Slider	
Type	Art.No	Type	Art. No.	Type	Art. No.
P01-37x120/280x360-C	-->	PS01-37x120-C	0150-1223	& PL01-20x500/420	0150-1328

## Cable Type



Linear Motor		Stator		Slider	
Type	Art.No	Type	Art. No.	Type	Art. No.
P01-37x120/280x360	-->	PS01-37x120	0150-1204	& PL01-20x500/420	0150-1328
P01-37x120/280x360-C20	-->	PS01-37x120-C20	0150-1237	& PL01-20x500/420	0150-1328

## Slider



Standard Type	Slider Standard	PL01-20x500/420	0150-1328
Special Sliders	Heavy Duty Slider with WC/C-Coating	PL02-20x500/420	0150-1329
	Hollow Slider hole diameter 6.5mm	PL01-20x500/420-L	0150-1358
	High Clearance Slider d=19mm, m=960g	PL01-19x500/420	0150-1455

## Connectors

### Motor Connector Wiring

Cable Length:  
P01-37x120... 1.5m  
P01-37x120...-C20 0.2m

		P01-37...-C P01-37...-C20	P01-37...
Ph 1+	red	A	1
Ph 1-	pink	B	2
Ph 2+	blue	C	3
Ph 2-	grey	D	4
+5VDC	white	E	5
GND	inner Shield	F	6
Sine	yellow	G	7
Cosine	green	H	8
Temp.	black	L	9
Shield	outer Shield	Case	10

## Accessoires

