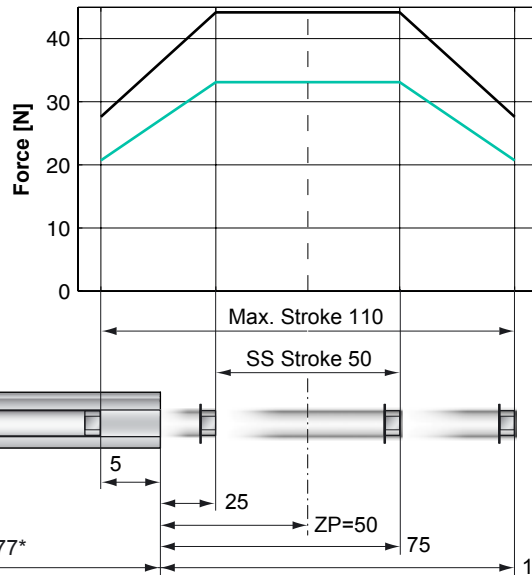


Max. Stroke: 110mm
Peak Force: 44N



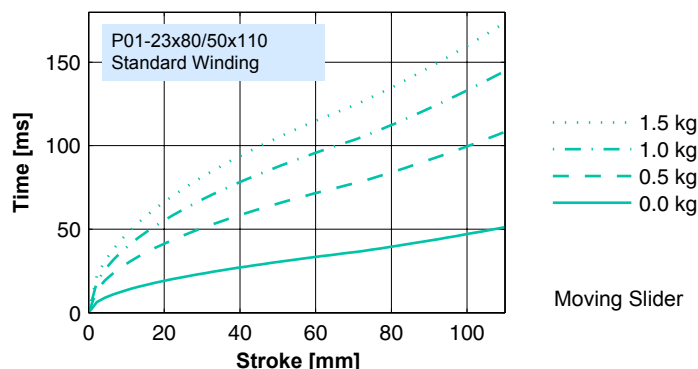
Standard Winding:
 — E1100, 72VDC & E1001, 72VDC
 — E100, 48VDC

Dimensions in mm
 *Cable Type

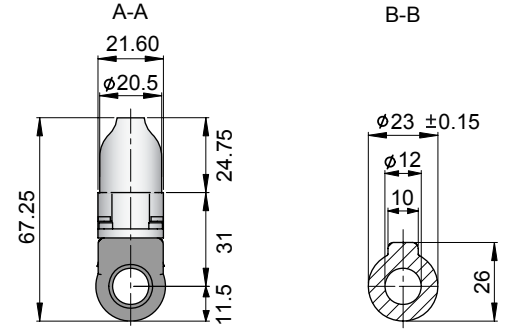
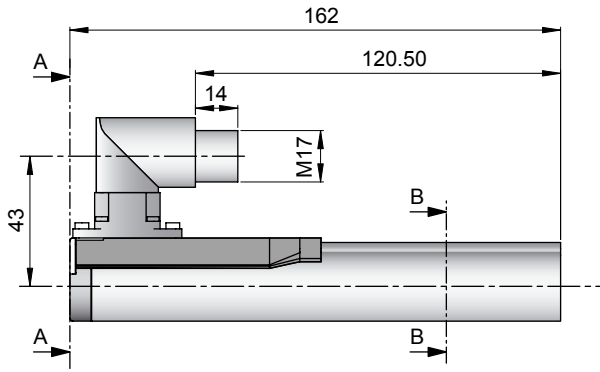
Motor Specification

P01-		Connector Type	Cable Type
		23x80/50x110-R	23x80/50x110 23x80/50x110-R20
Stroke Max.	mm (in)	110 (4.33)	110 (4.33)
Stroke SS	mm (in)	50 (1.97)	50 (1.97)
Peak Force E1100 / E1001	N (lbf)	44 (9.9)	44 (9.9)
Peak Force E100	N (lbf)	33 (7.4)	33 (7.4)
Cont. Force	N (lbf)	9 (2.0)	9 (2.0)
Cont. Force Fan cooling	N (lbf)	16 (3.7)	16 (3.7)
Border Force	%	63	63
Force Constant	N/A (lbf/A)	11.0 (2.48)	11.0 (2.48)
Max. Current @ 72VDC	A	4.0	4.0
Max. Current @ 48VDC	A	3.8	3.8
Max. Velocity @ 72VDC	m/s (in/s)	6.0 (236)	6.0 (236)
Max. Velocity @ 48VDC	m/s (in/s)	4.0 (157)	4.0 (157)
Phase Resist. 25/80 °C	Ohm	10.3/12.5	10.3/12.5
Phase Inductance	mH	1.4	1.4
Thermal Resistance	°K/W	7.0	7.0
Thermal Time Const.	sec	1600	1600
Stator Diameter	mm (in)	23 (0.91)	23 (0.91)
Stator Length	mm (in)	162 (6.38)	177 (6.97)
Stator Mass	g (lb)	265 (0.58)	265 (0.58)
Slider Diameter	mm (in)	12 (0.47)	12 (0.47)
Slider Length	mm (in)	190 (7.48)	190 (7.48)
Slider Mass	g (lb)	135 (0.30)	135 (0.30)
Position Repeatability	mm (in)	±0.05 (±0.0020)	±0.05 (±0.0020)
Linearity	%	±0.40	±0.40
Position Rep. with ES	mm (in)	±0.01 (±0.0004)	±0.01 (±0.0004)
Linearity with ES	mm (in)	±0.01 (±0.0004)	±0.01 (±0.0004)

Position-Time Diagram

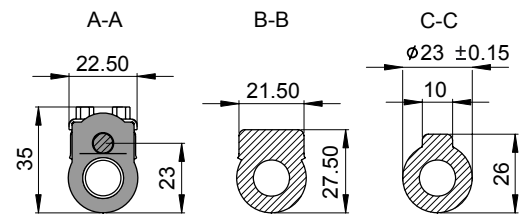
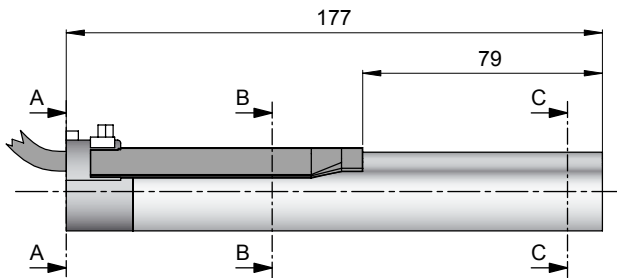


Connector Type



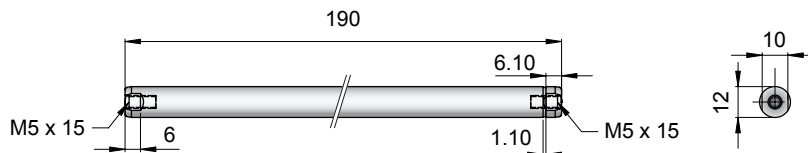
Linear Motor		Stator		Slider	
Type	Art.No	Type	Art. No.	Type	Art No.
P01-23x80/50x110-R	-->	PS01-23x80-R	0150-1233	&	PL01-12x190/140
					0150-1302

Cable Type



Linear Motor		Stator		Slider	
Type	Art.No	Type	Art. No.	Type	Art No.
P01-23x80/50x110	-->	PS01-23x80	0150-1201	&	PL01-12x190/140
					0150-1302
P01-23x80/50x110-R20	-->	PS01-23x80-R20	0150-1241	&	PL01-12x190/140
					0150-1302

Slider



Standard Type		Slider Standard		PL01-12x190/140		0150-1302	
Special Sliders		Heavy Duty Slider	with WC/C-Coating	PL02-12x190/140			0150-1304
		Hollow Slider	hole diameter 4.2mm	PL01-12x190/140-L			0150-1478

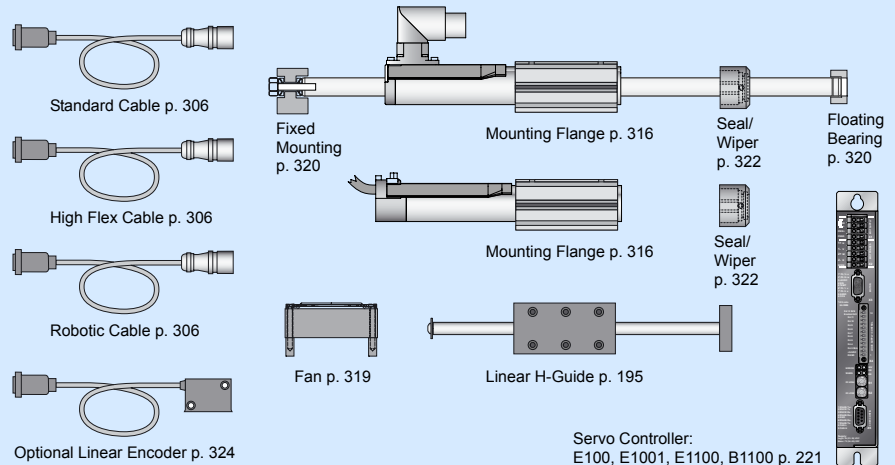
Connectors

Motor Connector Wiring

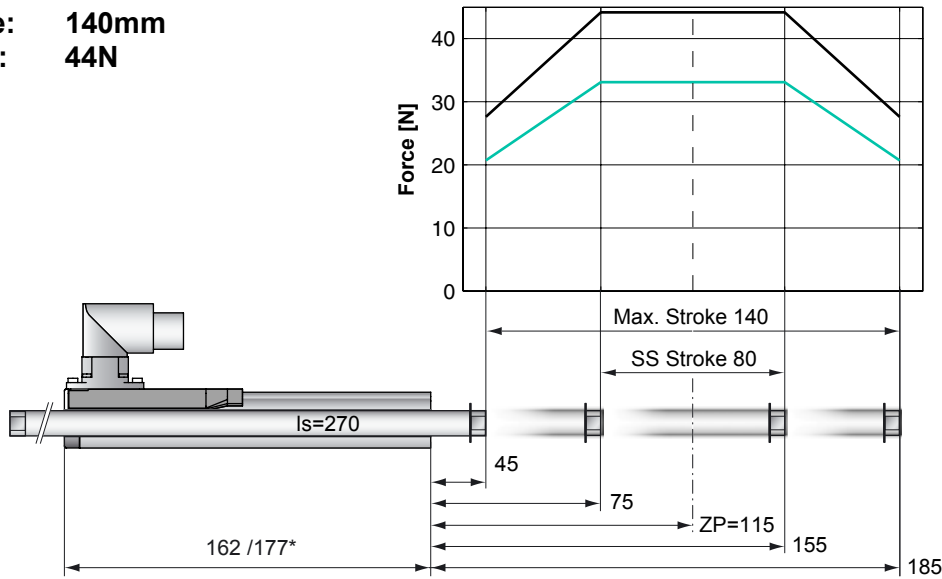
Cable Length:
P01-23x80/...x... 1.0m
P01-23x80/...x...-R20 0.2m

		P01-23...-R	P01-23...-R20	P01-23...-
Ph 1+	red	1	1	
Ph 1-	pink	2	6	
Ph 2+	blue	3	2	
Ph 2-	grey	4	7	
+5VDC	white	A	3	
GND	inner Shield	B	8	
Sine	yellow	C	4	
Cosine	green	D	9	
Temp.	black	E	5	
Shield	outer Shield	Case	Case	

Accessoires



Max. Stroke: 140mm
Peak Force: 44N



Standard Winding:

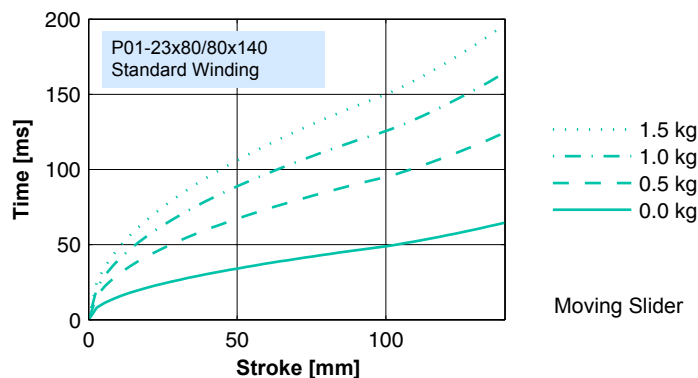
- E1100, 72VDC & E1001, 72VDC
- E100, 48VDC

Dimensions in mm
 *Cable Type

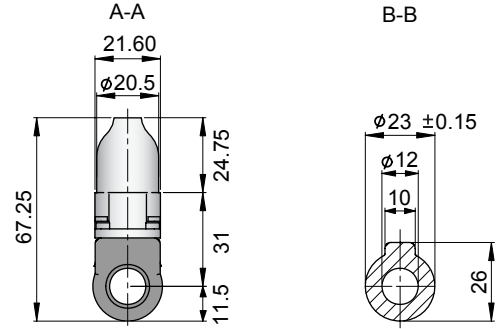
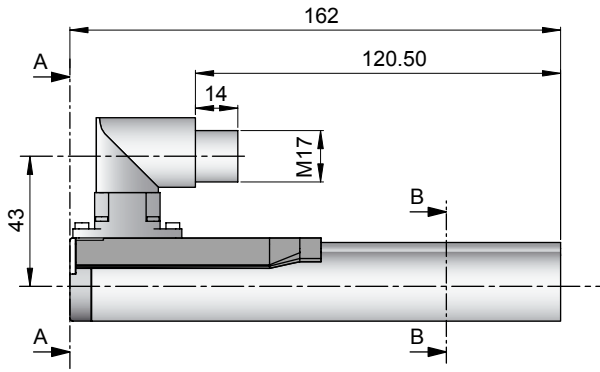
Motor Specification

P01-		Connector Type	Cable Type
		23x80/80x140-R	23x80/80x140 23x80/80x140-R20
Stroke Max.	mm (in)	140 (5.51)	140 (5.51)
Stroke SS	mm (in)	80 (3.15)	80 (3.15)
Peak Force E1100 / E1001	N (lbf)	44 (9.9)	44 (9.9)
Peak Force E100	N (lbf)	33 (7.4)	33 (7.4)
Cont. Force	N (lbf)	9 (2.0)	9 (2.0)
Cont. Force Fan cooling	N (lbf)	16 (3.7)	16 (3.7)
Border Force	%	63	63
Force Constant	N/A (lbf/A)	11.0 (2.48)	11.0 (2.48)
Max. Current @ 72VDC	A	4.0	4.0
Max. Current @ 48VDC	A	3.8	3.8
Max. Velocity @ 72VDC	m/s (in/s)	6.0 (236)	6.0 (236)
Max. Velocity @ 48VDC	m/s (in/s)	4.0 (157)	4.0 (157)
Phase Resist. 25/80 °C	Ohm	10.3/12.5	10.3/12.5
Phase Inductance	mH	1.4	1.4
Thermal Resistance	°K/W	7.0	7.0
Thermal Time Const.	sec	1600	1600
Stator Diameter	mm (in)	23 (0.91)	23 (0.91)
Stator Length	mm (in)	162 (6.38)	177 (6.97)
Stator Mass	g (lb)	265 (0.58)	265 (0.58)
Slider Diameter	mm (in)	12 (0.47)	12 (0.47)
Slider Length	mm (in)	270 (10.63)	270 (10.63)
Slider Mass	g (lb)	171 (0.38)	171 (0.38)
Position Repeatability	mm (in)	±0.05 (±0.0020)	±0.05 (±0.0020)
Linearity	%	±0.35	±0.35
Position Rep. with ES	mm (in)	±0.01 (±0.0004)	±0.01 (±0.0004)
Linearity with ES	mm (in)	±0.01 (±0.0004)	±0.01 (±0.0004)

Position-Time Diagram

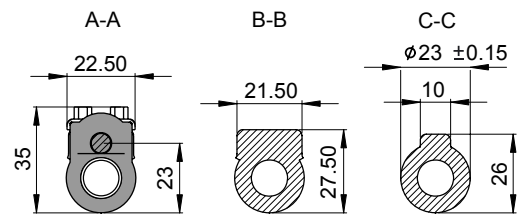
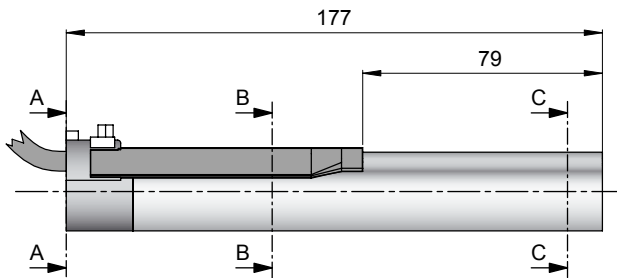


Connector Type



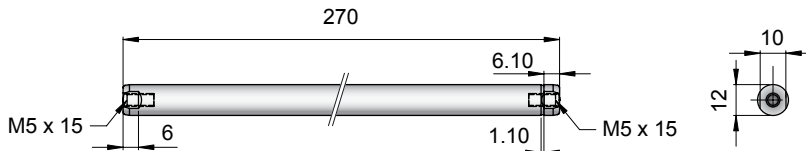
Linear Motor		Stator		Slider		
Type	Art.No	Type	Art. No.	Type	Art No.	
P01-23x80/80x140-R	-->	PS01-23x80-R	0150-1233	&	PL01-12x270/170	0150-1307

Cable Type



Linear Motor		Stator		Slider		
Type	Art.No	Type	Art. No.	Type	Art No.	
P01-23x80/80x140	-->	PS01-23x80	0150-1201	&	PL01-12x270/170	0150-1307
P01-23x80/80x140-R20	-->	PS01-23x80-R20	0150-1241	&	PL01-12x270/170	0150-1307

Slider



Standard Type	Slider Standard	PL01-12x270/170	0150-1307
Special Sliders	Heavy Duty Slider with WC/C-Coating	PL02-12x270/170	0150-1310
	Hollow Slider hole diameter 4.2mm	PL01-12x270/170-L	0150-1393

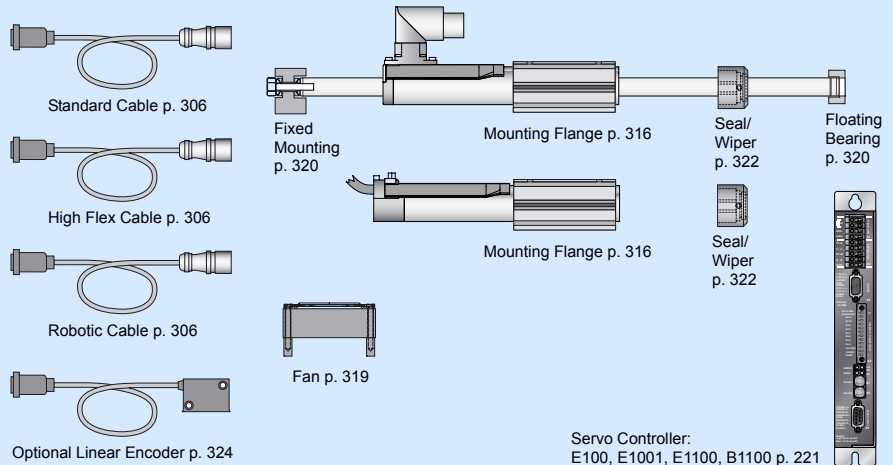
Connectors

Motor Connector Wiring

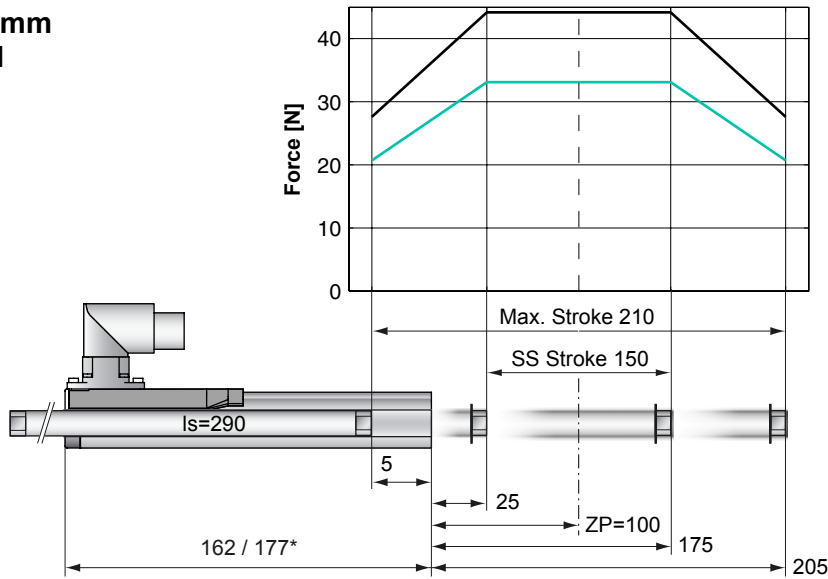
Cable Length:
P01-23x80/...x... 1.0m
P01-23x80/...x...-R20 0.2m

		P01-23...-R	P01-23...-R20	P01-23....
Ph 1+	red	1	1	
Ph 1-	pink	2	6	
Ph 2+	blue	3	2	
Ph 2-	grey	4	7	
+5VDC	white	A	3	
GND	inner Shield	B	8	
Sine	yellow	C	4	
Cosine	green	D	9	
Temp.	black	E	5	
Shield	outer Shield	Case	Case	

Accessoires



Max. Stroke: 210mm
Peak Force: 44N



Standard Winding:

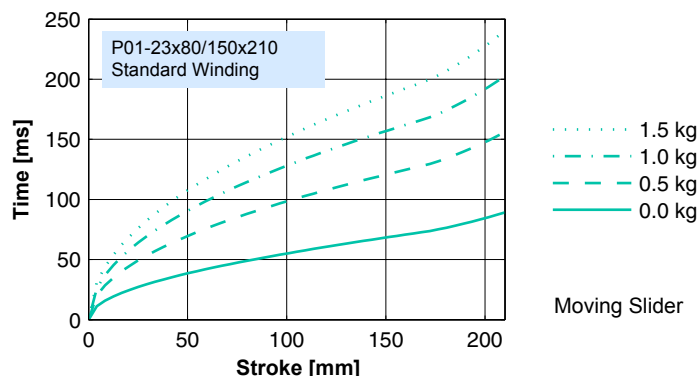
- E1100, 72VDC & E1001, 72VDC
- E100, 48VDC

Dimensions in mm
 *Cable Type

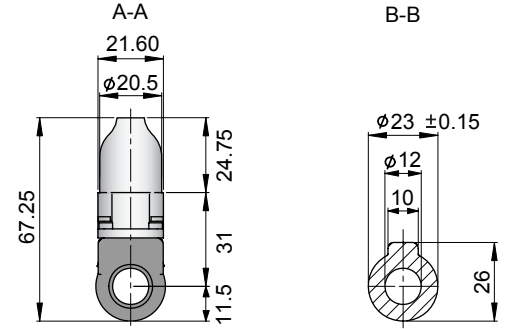
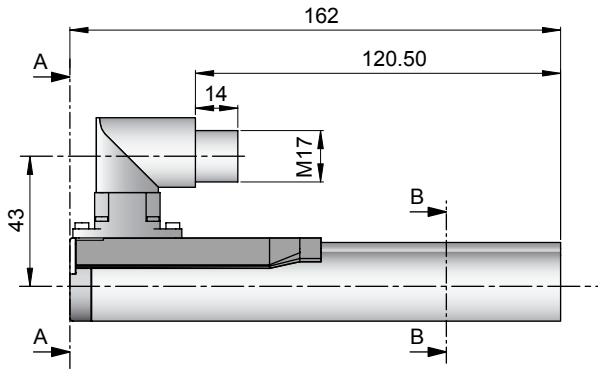
Motor Specification

P01-		Connector Type	Cable Type
		23x80/150x210-R	23x80/150x210 23x80/150x210-R20
Stroke Max.	mm (in)	210 (8.27)	210 (8.27)
Stroke SS	mm (in)	150 (5.91)	150 (5.91)
Peak Force E1100 / E1001	N (lbf)	44 (9.9)	44 (9.9)
Peak Force E100	N (lbf)	33 (7.4)	33 (7.4)
Cont. Force	N (lbf)	9 (2.0)	9 (2.0)
Cont. Force Fan cooling	N (lbf)	16 (3.7)	16 (3.7)
Border Force	%	63	63
Force Constant	N/A (lbf/A)	11.0 (2.48)	11.0 (2.48)
Max. Current @ 72VDC	A	4.0	4.0
Max. Current @ 48VDC	A	3.8	3.8
Max. Velocity @ 72VDC	m/s (in/s)	6.0 (236)	6.0 (236)
Max. Velocity @ 48VDC	m/s (in/s)	4.0 (157)	4.0 (157)
Phase Resist. 25/80 °C	Ohm	10.3/12.5	10.3/12.5
Phase Inductance	mH	1.4	1.4
Thermal Resistance	°K/W	7.0	7.0
Thermal Time Const.	sec	1600	1600
Stator Diameter	mm (in)	23 (0.91)	23 (0.91)
Stator Length	mm (in)	162 (6.38)	177 (6.97)
Stator Mass	g (lb)	265 (0.58)	265 (0.58)
Slider Diameter	mm (in)	12 (0.47)	12 (0.47)
Slider Length	mm (in)	290 (11.42)	290 (11.42)
Slider Mass	g (lb)	220 (0.49)	220 (0.49)
Position Repeatability	mm (in)	±0.05 (±0.0020)	±0.05 (±0.0020)
Linearity	%	±0.30	±0.30
Position Rep. with ES	mm (in)	±0.01 (±0.0004)	±0.01 (±0.0004)
Linearity with ES	mm (in)	±0.01 (±0.0004)	±0.01 (±0.0004)

Position-Time Diagram

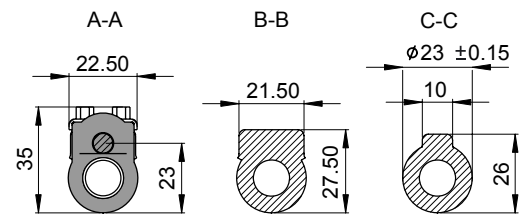
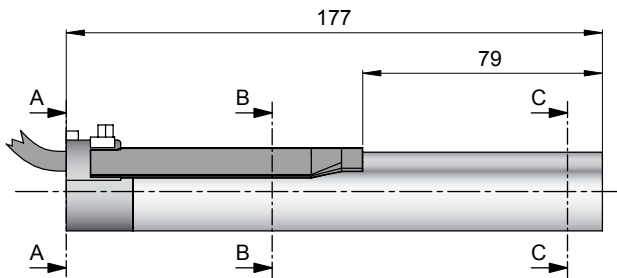


Connector Type



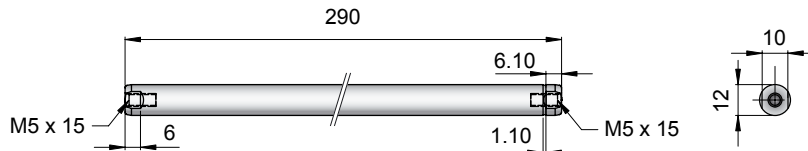
Linear Motor		Stator		Slider	
Type	Art.No	Type	Art. No.	Type	Art No.
P01-23x80/150x210-R	-->	PS01-23x80-R	0150-1233	& PL01-12x290/240	0150-1320

Cable Type



Linear Motor		Stator		Slider	
Type	Art.No	Type	Art. No.	Type	Art No.
P01-23x80/150x210	-->	PS01-23x80	0150-1201	& PL01-12x290/240	0150-1320
P01-23x80/150x210-R20	-->	PS01-23x80-R20	0150-1241	& PL01-12x290/240	0150-1320

Slider



Standard Type	Slider Standard	PL01-12x290/240	0150-1320
Special Sliders	Heavy Duty Slider with WC/C-Coating	PL02-12x290/240	0150-1321
	Hollow Slider hole diameter 4.2mm	PL01-12x290/240-L	0150-1363

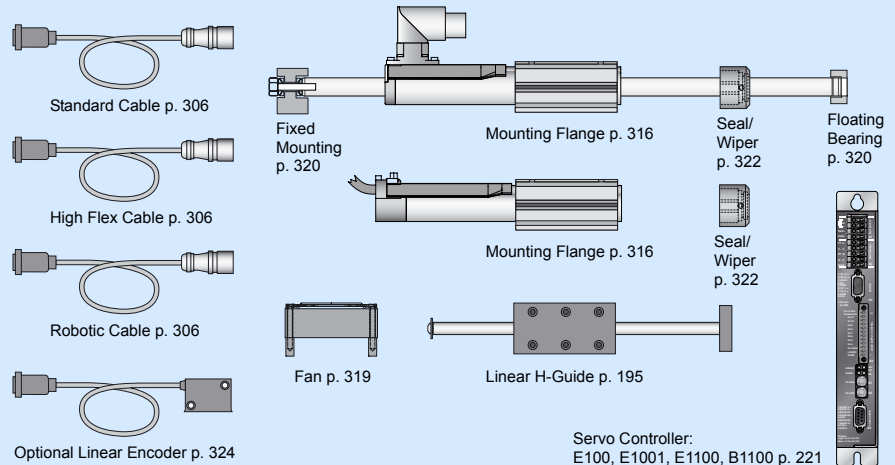
Connectors

Motor Connector Wiring

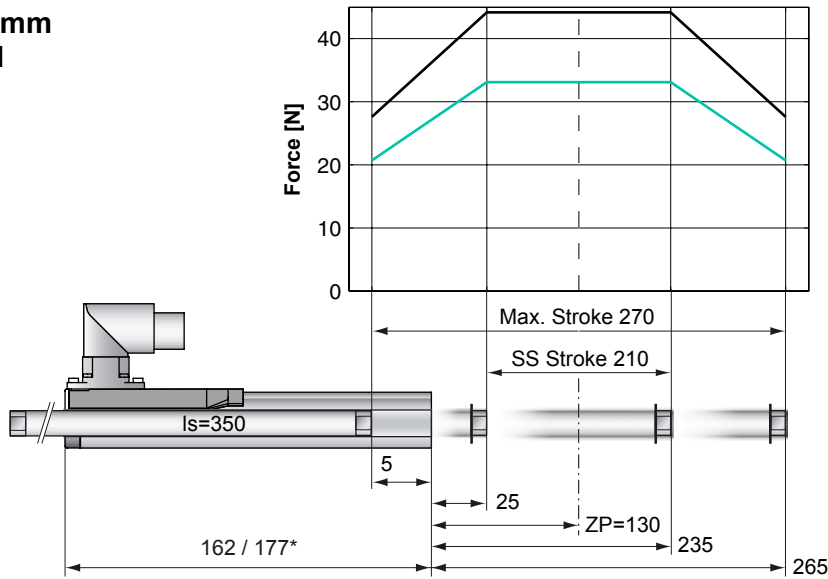
Cable Length:
P01-23x80/... 1.0m
P01-23x80/...-R20 0.2m

		P01-23...-R	P01-23...-R20	P01-23...
Ph 1+	red	1	1	
Ph 1-	pink	2	6	
Ph 2+	blue	3	2	
Ph 2-	grey	4	7	
+5VDC	white	A	3	
GND	inner Shield	B	8	
Sine	yellow	C	4	
Cosine	green	D	9	
Temp.	black	E	5	
Shield	outer Shield	Case	Case	

Accessoires



Max. Stroke: 270mm
Peak Force: 44N



Standard Winding:

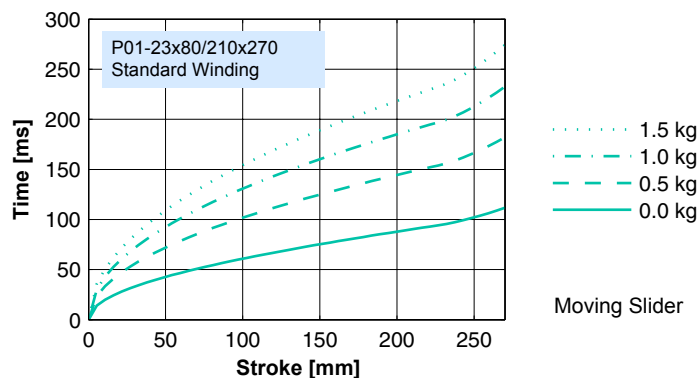
- E1100, 72VDC & E1001, 72VDC
- E100, 48VDC

Dimensions in mm
 *Cable Type

Motor Specification

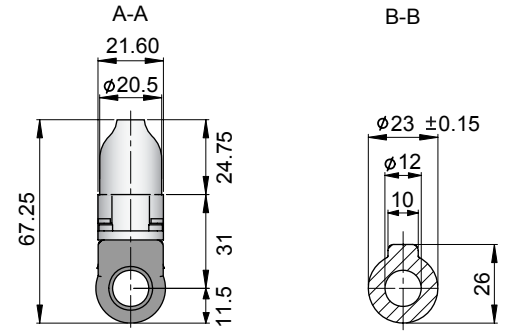
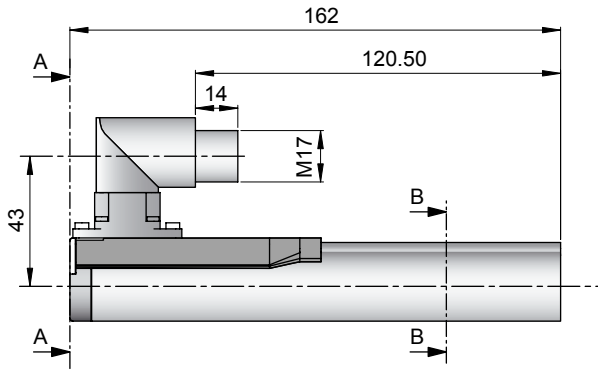
P01-		Connector Type	Cable Type
		23x80/210x270-R	23x80/210x270 23x80/210x270-R20
Stroke Max.	mm (in)	270 (10.63)	270 (10.63)
Stroke SS	mm (in)	210 (8.27)	210 (8.27)
Peak Force E1100 / E1001	N (lbf)	44 (9.9)	44 (9.9)
Peak Force E100	N (lbf)	33 (7.4)	33 (7.4)
Cont. Force	N (lbf)	9 (2.0)	9 (2.0)
Cont. Force Fan cooling	N (lbf)	16 (3.7)	16 (3.7)
Border Force	%	63	63
Force Constant	N/A (lbf/A)	11.0 (2.48)	11.0 (2.48)
Max. Current @ 72VDC	A	4.0	4.0
Max. Current @ 48VDC	A	3.8	3.8
Max. Velocity @ 72VDC	m/s (in/s)	6.0 (236)	6.0 (236)
Max. Velocity @ 48VDC	m/s (in/s)	4.0 (157)	4.0 (157)
Phase Resist. 25/80 °C	Ohm	10.3/12.5	10.3/12.5
Phase Inductance	mH	1.4	1.4
Thermal Resistance	°K/W	7.0	7.0
Thermal Time Const.	sec	1600	1600
Stator Diameter	mm (in)	23 (0.91)	23 (0.91)
Stator Length	mm (in)	162 (6.38)	177 (6.97)
Stator Mass	g (lb)	265 (0.58)	265 (0.58)
Slider Diameter	mm (in)	12 (0.47)	12 (0.47)
Slider Length	mm (in)	350 (13.78)	350 (13.78)
Slider Mass	g (lb)	271 (0.60)	271 (0.60)
Position Repeatability	mm (in)	±0.05 (±0.0020)	±0.05 (±0.0020)
Linearity	%	±0.25	±0.25
Position Rep. with ES	mm (in)	±0.01 (±0.0004)	±0.01 (±0.0004)
Linearity with ES	mm (in)	±0.01 (±0.0004)	±0.01 (±0.0004)

Position-Time Diagram



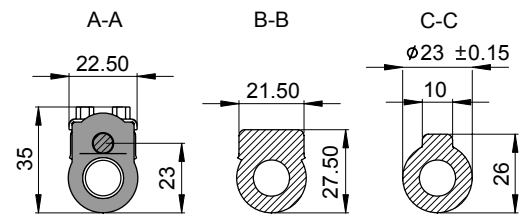
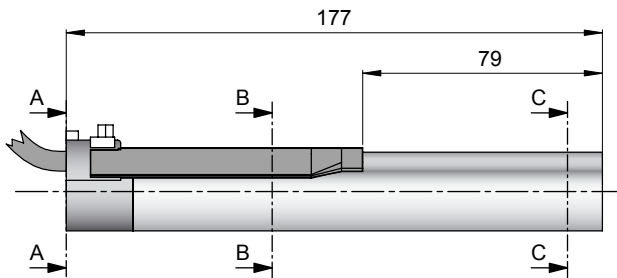
Moving Slider

Connector Type



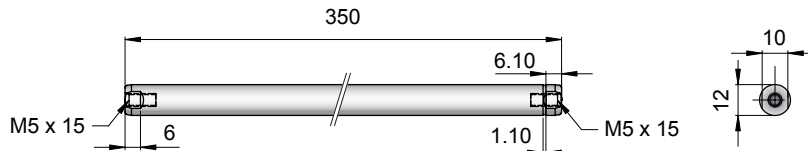
Linear Motor		Stator		Slider	
Type	Art.No	Type	Art. No.	Type	Art No.
P01-23x80/210x270-R	-->	PS01-23x80-R	0150-1233	& PL01-12x350/300	0150-1322

Cable Type



Linear Motor		Stator		Slider	
Type	Art.No	Type	Art. No.	Type	Art No.
P01-23x80/210x270	-->	PS01-23x80	0150-1201	& PL01-12x350/300	0150-1322
P01-23x80/210x270-R20	-->	PS01-23x80-R20	0150-1241	& PL01-12x350/300	0150-1322

Slider



Standard Type	Slider Standard	PL01-12x350/300	0150-1322
Special Sliders	Heavy Duty Slider with WC/C-Coating	PL02-12x350/300	0150-1323
	Hollow Slider hole diameter 4.2mm	PL01-12x350/300-L	0150-1479

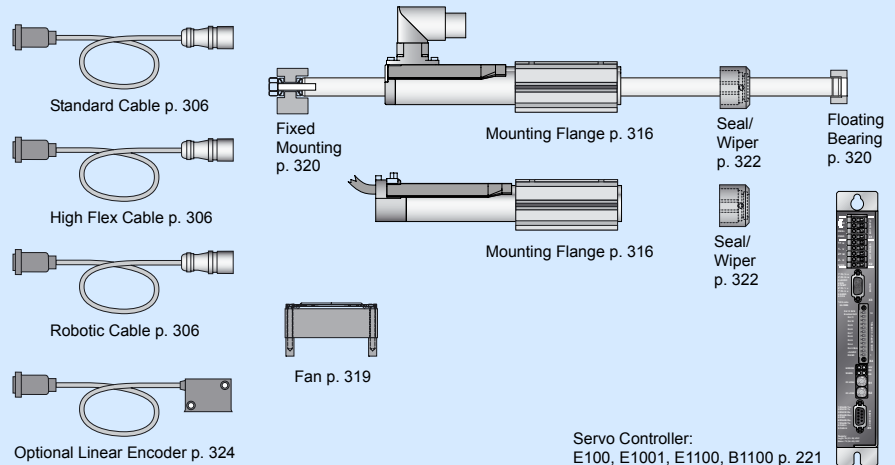
Connectors

Motor Connector Wiring

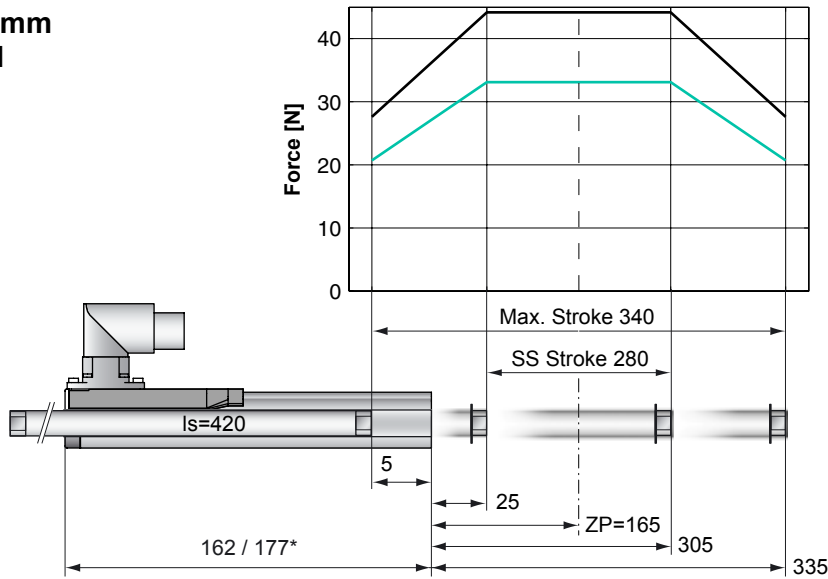
Cable Length:
P01-23x80/... 1.0m
P01-23x80/...-R20 0.2m

		P01-23...-R	P01-23...-R20	P01-23....
Ph 1+	red	1	1	
Ph 1-	pink	2	6	
Ph 2+	blue	3	2	
Ph 2-	grey	4	7	
+5VDC	white	A	3	
GND	inner Shield	B	8	
Sine	yellow	C	4	
Cosine	green	D	9	
Temp.	black	E	5	
Shield	outer Shield	Case	Case	

Accessoires



Max. Stroke: 340mm
Peak Force: 44N



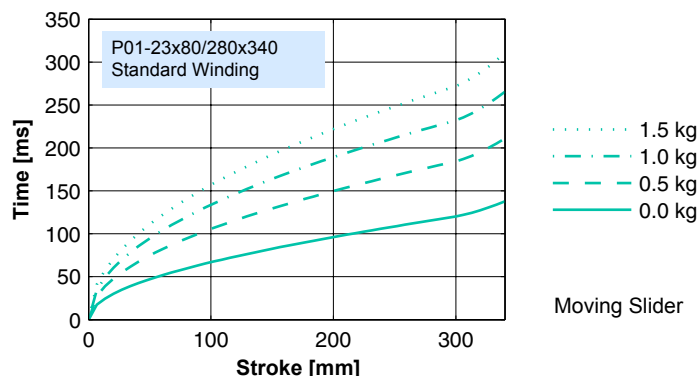
Standard Winding:
 — E1100, 72VDC & E1001, 72VDC
 — E100, 48VDC

Dimensions in mm
 *Cable Type

Motor Specification

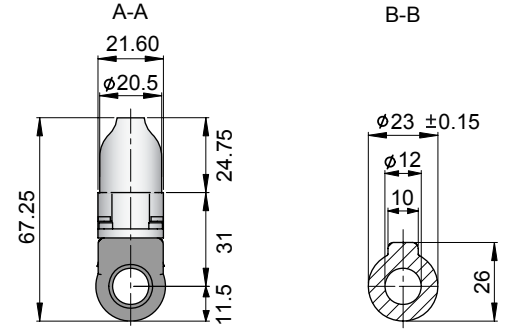
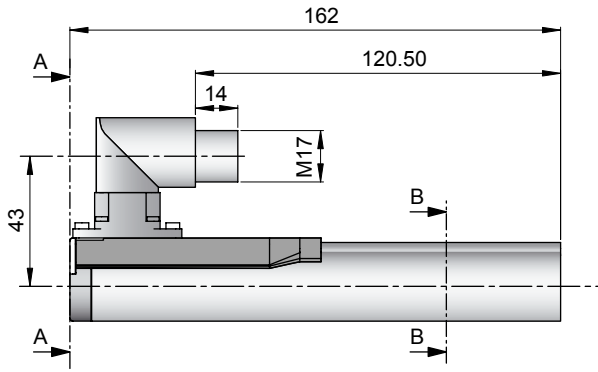
P01-		Connector Type	Cable Type
		23x80/280x340-R	23x80/280x340 23x80/280x340-R20
Stroke Max.	mm (in)	340 (13.39)	340 (13.39)
Stroke SS	mm (in)	280 (11.02)	280 (11.02)
Peak Force E1100 / E1001	N (lbf)	44 (9.9)	44 (9.9)
Peak Force E100	N (lbf)	33 (7.4)	33 (7.4)
Cont. Force	N (lbf)	9 (2.0)	9 (2.0)
Cont. Force Fan cooling	N (lbf)	16 (3.7)	16 (3.7)
Border Force	%	63	63
Force Constant	N/A (lbf/A)	11.0 (2.48)	11.0 (2.48)
Max. Current @ 72VDC	A	4.0	4.0
Max. Current @ 48VDC	A	3.8	3.8
Max. Velocity @ 72VDC	m/s (in/s)	6.0 (236)	6.0 (236)
Max. Velocity @ 48VDC	m/s (in/s)	4.0 (157)	4.0 (157)
Phase Resist. 25/80 °C	Ohm	10.3/12.5	10.3/12.5
Phase Inductance	mH	1.4	1.4
Thermal Resistance	°K/W	7.0	7.0
Thermal Time Const.	sec	1600	1600
Stator Diameter	mm (in)	23 (0.91)	23 (0.91)
Stator Length	mm (in)	162 (6.38)	177 (6.97)
Stator Mass	g (lb)	265 (0.58)	265 (0.58)
Slider Diameter	mm (in)	12 (0.47)	12 (0.47)
Slider Length	mm (in)	420 (16.54)	420 (16.54)
Slider Mass	g (lb)	330 (0.73)	330 (0.73)
Position Repeatability	mm (in)	±0.05 (±0.0020)	±0.05 (±0.0020)
Linearity	%	±0.25	±0.25
Position Rep. with ES	mm (in)	±0.01 (±0.0004)	±0.01 (±0.0004)
Linearity with ES	mm (in)	±0.01 (±0.0004)	±0.01 (±0.0004)

Position-Time Diagram



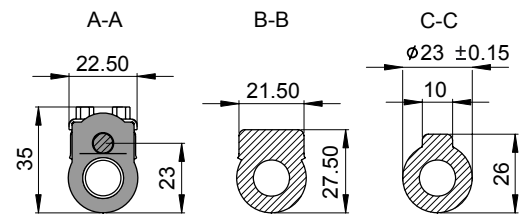
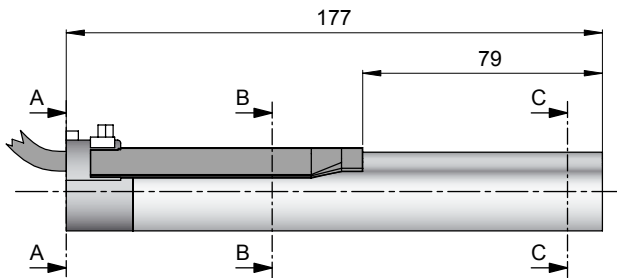
Moving Slider

Connector Type



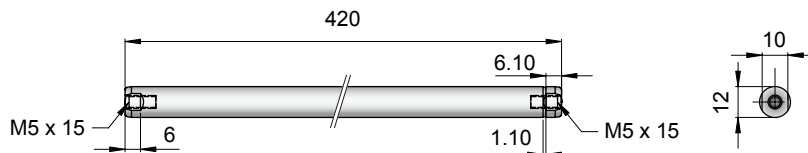
Linear Motor		Stator		Slider	
Type	Art.No	Type	Art. No.	Type	Art No.
P01-23x80/280x340-R	-->	PS01-23x80-R	0150-1233	& PL01-12x420/370	0150-1324

Cable Type



Linear Motor		Stator		Slider	
Type	Art.No	Type	Art. No.	Type	Art No.
P01-23x80/280x340	-->	PS01-23x80	0150-1201	& PL01-12x420/370	0150-1324
P01-23x80/280x340-R20	-->	PS01-23x80-R20	0150-1241	& PL01-12x420/370	0150-1324

Slider



Standard Type	Slider Standard	PL01-12x420/370	0150-1324
Special Sliders	Heavy Duty Slider with WC/C-Coating	PL02-12x420/370	0150-1325
	Hollow Slider hole diameter 4.2mm	PL01-12x420/370-L	0150-1394

Connectors

Motor Connector Wiring

Cable Length:
P01-23x80/... 1.0m
P01-23x80/...-R20 0.2m

		P01-23...-R	P01-23...-R20	P01-23....
Ph 1+	red	1	1	
Ph 1-	pink	2	6	
Ph 2+	blue	3	2	
Ph 2-	grey	4	7	
+5VDC	white	A	3	
GND	inner Shield	B	8	
Sine	yellow	C	4	
Cosine	green	D	9	
Temp.	black	E	5	
Shield	outer Shield	Case	Case	

Accessoires

