



KT4B Black Type Added to Popular Compact-bodied KT4H Temperature Controller Series!

NEW

Camouflages
dirt



KT4H



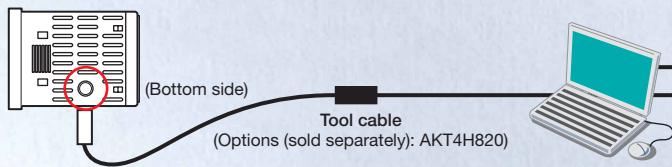
KT4B

**Depth
56.0mm**

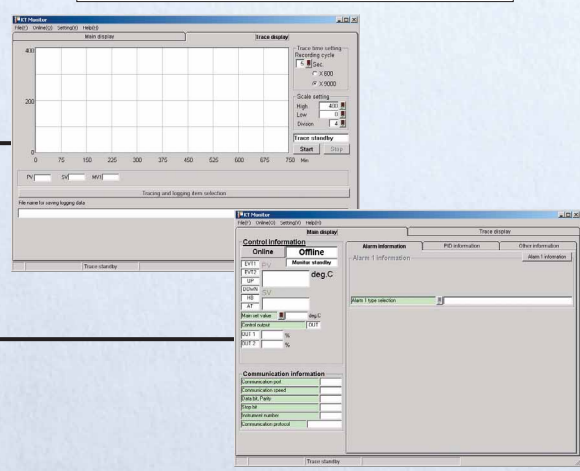
**Accuracy
±0.2%FS**

**Highspeed
250ms**

When setting software, KT Monitor (free of charge)*1 and dedicated tool cable are used, you can edit data and so on*2 easily.



All data settings and temperature profile display



*1 Available for download at no charge from our website.
(Customer registration is required to download data.)
*2 Editing of all types of data, File saving, Monitoring of readings, Saving of log files, etc.

www.mew.co.jp/ac/e

PRODUCT TYPES

● **KT4B Black Type Temperature Controller**

| Base model | Power supply | Sensor input | Control output | Alarm output | Heating/cooling control | Heater burnout alarm | Communications function | Model No. |
|-----------------------------|-----------------------|--------------------|----------------------|----------------------------|-------------------------|----------------------|-----------------------------|-----------------------------|
| AKT4B | 1 (100 to 240V AC) | 1 (Multi-input) | 1 (Relay contact) | 1 (1 point) | 0 (Not available) | 0 (Not available) | Blank (Not available) | AKT4B111100 |
| | | | | 2 (2 points) | | | 1 (Serial communication) | AKT4B1111001 |
| | | | | 2 (Non-contact voltage) | | | Blank (Not available) | AKT4B111200 |
| | | | | | | | 1 (1 point) | 1 (Serial communication) |
| | | | 3 (DC current) | Blank (Not available) | | | AKT4B112100 | |
| | | | | 2 (2 points) | | | 1 (Serial communication) | AKT4B1121001 |
| | | | | 1 (1 point) | | | Blank (Not available) | AKT4B112200 |
| | | | | | | | 2 (2 points) | 1 (Serial communication) |
| | | | | 1 (1 point) | | | Blank (Not available) | AKT4B113100 |
| | | | | | | | 2 (2 points) | 1 (Serial communication) |
| Blank (Not available) | AKT4B113200 | | | | | | | |
| 1 (Serial communication) | AKT4B1132001 | | | | | | | |

*Please inquire if you need specifications not included in the model numbers above.
 *Use RS485 for serial communication.
 Example Model No.: AKT4B111100
 Specifications: Power supply 100 to 240V AC, Heating/cooling control: Not available,
 Sensor input: Multi-input, Heater burnout alarm: Not available,
 Control output: Relay contact, Communications function: Not available,
 Alarm output: 1 point

● **Options (Common for KT4H and KT4B)**

| Product name | Model No. |
|------------------------------------|-----------|
| Shunt resistor (for Current input) | AKT4810 |
| Terminal cover | AKT4H801 |
| Tool cable | AKT4H820 |

KT Monitor

Available for download free of charge from our website.
 Use it to collect data from the KT4H/KT4B temperature controller.



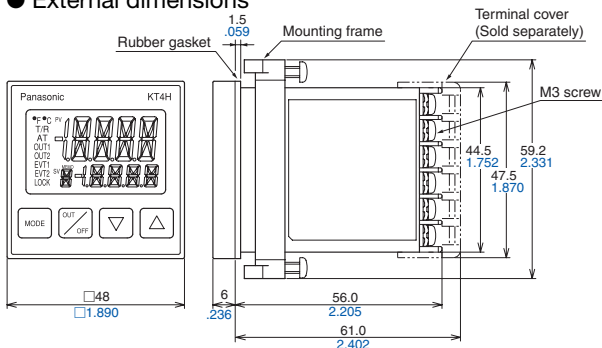
■ **Features**

- (1) Parameters can be set from a PC.
- (2) Measurement data can be monitored from a PC.
- (3) Measurement data can be logged to a PC.

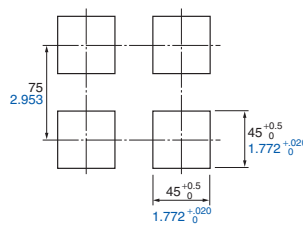
Download from <http://www.mew.co.jp/ac/e> (Customer registration is required to download data.)

■ **DIMENSIONS** (Unit: mm inch)

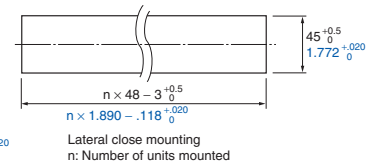
● **External dimensions**



● **Panel cutout**



● **Continuous mounting**



Notes: If lateral close mounting is used for the controller, IP66 specification (Dust-proof/Drip-proof) may be compromised, and all warranties will be invalidated.

Please contact

Matsushita Electric Works, Ltd.

Automation Controls Business Unit

■ Head Office: 1048, Kadoma, Kadoma-shi, Osaka 571-8686, Japan

■ Telephone: +81-6-6908-1050 ■ Facsimile: +81-6-6908-5781

<http://www.mew.co.jp/ac/e>

