

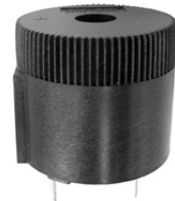
Piezo Buzzer

Piezo Indicator(Internal Circuitry Type)

Pin Type

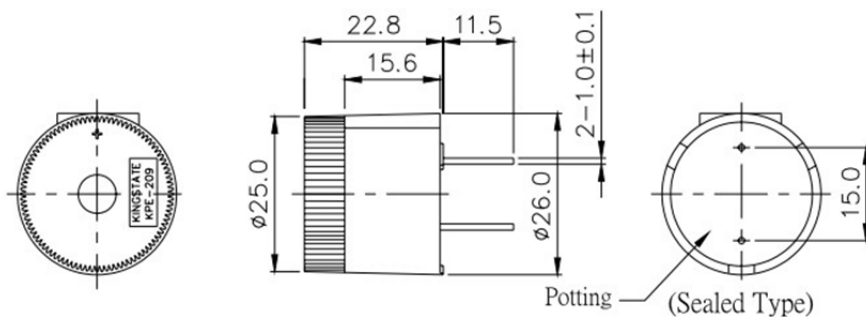
KPEG209

KPEG209



Rated Frequency (Hz)	2,900±500
Operating Voltage Range (V.D.C.)	9~12
Current Consumption (mA)	Max.35@12VDC
Sound Pressure Level (dB)	Min.91dB@60cm / 12VDC
Tone	Continuous
Operating Temperature (°C)	-20 ~ +65
Storage Temperature (°C)	-40 ~ +80
Weight (Gram)	41.0
Material	PC+10% Glass (Black)
Dimensions	Φ26.0 x H22.8

Dimension



Characteristic / Schematic Diagram

