

# Enhanced plug-in units – 2 Rail

## 160MM AND 220MM DEPTH

Supplied in kit form, the KM6-II extruded plug-in unit offers strength and simple assembly.

### Features

- Plug-in units with normal or high level screening
- 3U x 160mm or 3U x 220mm, various widths
- Electrical continuity between all components
- KM6-II modules with mechanical strength for heavy components
- Good thermal properties and electromagnetic shielding between neighbouring system components
- Front panels with anodised front face, chromated rear face
- Compatible with DIN 41494 / IEC 60297-3

Construction is based on a conductive extruded side plate offering new facilities. Right hand covers, with a rear cut-out for DIN 41612 connectors, slot into angled grooves in the extrusion and are retained positively at the rear of the module.

On high screening level versions, additional fixings are provided at the front and rear to maintain limited slot lengths. Metal inserts are provided for electrical continuity when fitting to the subrack. Features are provided in the extrusion for two x 160mm tapped strips offering facilities for mounting components.

Single Eurocard/connector assemblies can be attached with separate metal mounting brackets.

These modules mount to two PCB guides: 950-232662J (PK.10) for the 160mm deep module or 950-232663G (PK.10) for the 220mm deep version.

### Contents of kit

| Description               | Qty. | Material/Finish  |
|---------------------------|------|--|
| Front panel               | 1    | 2,5mm Aluminium alloy, clear anodised front face, chromated rear, horizontal grain |
| Side extrusion            | 2    | Aluminium alloy, unfinished  |
| Top, side and rear covers | 1    | 1mm galvanised steel   |
| Handle                    | 1    | Luranyl 2452/1, black  |
| Ident label               | 1    | 1,5mm aluminium, anodised  |
| Fixings                   |      |  |
| Assembly instructions     |      |  |

The normal version has plastic inserts, the higher level version metal inserts.

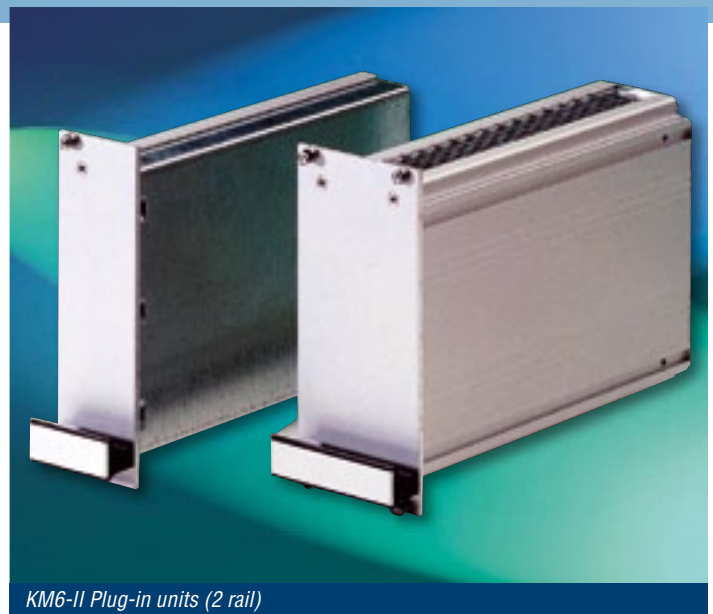
### ORDERING INFORMATION

| Description: 2 Rail module - 160mm deep version |          |                      |                           | Order codes       |                   |
|---|----------|----------------------|---------------------------|-------------------|-------------------|
| Height  | Width HP | Front panel width mm | PCB component height max. | Normal            | High level        |
|   |          |                      |                           | version           | screening         |
| 3U  | 6        | 30,08                | 12,6mm                    | <b>951-263113</b> | <b>951-263117</b> |
|   | 7        | 35,16                | 17,7mm                    | <b>951-263114</b> | <b>951-263118</b> |
|   | 8        | 40,24                | 22,8mm                    | <b>951-263115</b> | <b>951-263119</b> |
|   | 10       | 50,40                | 32,9mm                    | <b>951-263116</b> | <b>951-263120</b> |

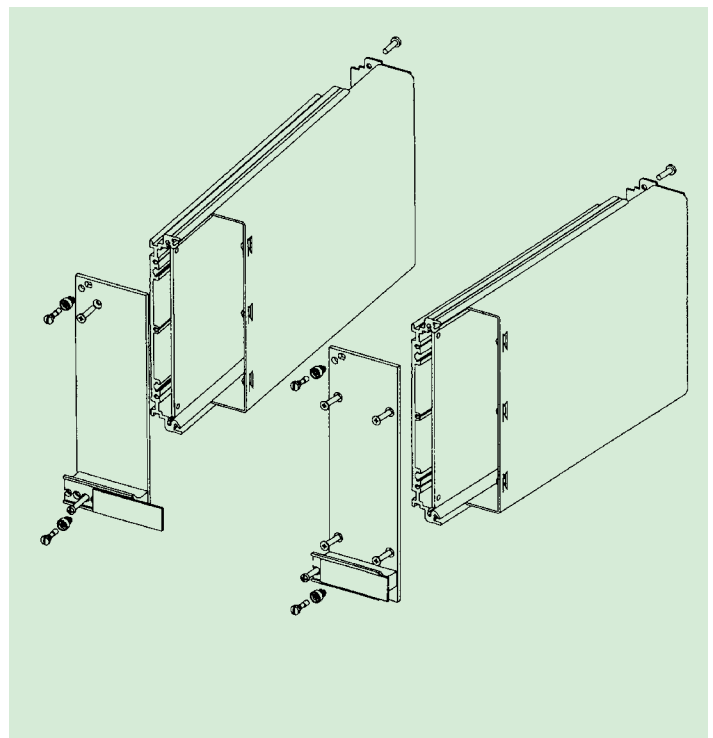
| Description: 2 Rail module - 220mm deep version |          |                      |                           | Order codes       |                   |
|---|----------|----------------------|---------------------------|-------------------|-------------------|
| Height  | Width HP | Front panel width mm | PCB component height max. | Normal            | High level        |
|   |          |                      |                           | version           | screening         |
| 3U  | 6        | 30,08                | 12,6mm                    | <b>951-263903</b> | <b>951-263906</b> |
|   | 8        | 40,24                | 22,8mm                    | <b>951-263904</b> | <b>951-263907</b> |
|   | 10       | 50,40                | 32,9mm                    | <b>951-263905</b> | <b>951-263908</b> |

### ORDER SEPARATELY

|                                 |          |                   |
|---------------------------------|----------|-------------------|
| Metal front panel bush          | pk 100   | <b>953-236506</b> |
| PCB/connector mounting brackets | pk 5 pr. | <b>951-263755</b> |
| Tapped strip M2,5 x 160mm       | pk 10    | <b>951-263756</b> |
| Tapped strip M2,5, 42HP wide    | 1        | <b>950-202739</b> |



KM6-II Plug-in units (2 rail)



# Enhanced plug-in units – 4 Rail

## 160MM AND 220MM DEPTH

Supplied in kit form, the KM6-II extruded plug-in unit offers strength and simple assembly.

### Features

- Plug-in units with normal or high level screening
- 3U x 160mm or 3U x 220mm, various widths
- Electrical continuity between all components
- KM6-II modules with mechanical strength for heavy components
- Good thermal properties and electromagnetic shielding between neighbouring system components
- Front panels with anodised front face, chromated rear face
- Compatible with DIN 41494 / IEC 60297-3

Construction is based on two conductive extruded side plates offering new facilities. Ventilated top and bottom covers slide into angled grooves in the extrusions. Rear covers, with a cut-out for DIN 41612 connectors, screw to the side extrusions.

On high screening level versions, additional fixings are provided at the front and rear to maintain limited slot lengths. Metal inserts are provided for electrical continuity when fitting to the subrack.

Features are provided in the extrusion for two x 160mm tapped strips offering facilities for mounting components. Single Eurocard/connector assemblies can be attached with separate metal mounting brackets.

These modules mount to four PCB guides: 950-232662J (PK.10) for the 160mm deep module or 950-232663G (PK.10) for the 220mm deep version.

### Contents of kit

| Description                 | Qty. | Material/Finish  |
|-----------------------------|------|--|
| Front panel                 | 1    | 2,5mm Aluminium alloy, clear anodised front face, chromated rear, horizontal grain |
| Side extrusion              | 2    | Aluminium alloy, unfinished  |
| Top, bottom and rear covers | 1    | 1mm galvanised steel   |
| Handle                      | 1    | Luranyl 2452/1, black  |
| Ident label                 | 1    | 1,5mm aluminium, anodised  |
| Fixings                     |      |  |
| Assembly instructions       |      |  |

The normal version has plastic inserts, the higher level version metal inserts.

### ORDERING INFORMATION

| Description: 4 Rail module - 160mm deep version |       |             |               | Order codes       |                   |
|---|-------|-------------|---------------|-------------------|-------------------|
| Height  | Width | Front panel | PCB component | Normal            | High level        |
|   | HP    | width mm    | height max.   | version           | screening         |
| 3U  | 12    | 60,56       | 39,2mm        | <b>951-263121</b> | <b>951-263126</b> |
|   | 14    | 70,72       | 49,3mm        | <b>951-263122</b> | <b>951-263127</b> |
|   | 21    | 106,28      | 84,9mm        | <b>951-263123</b> | <b>951-263128</b> |
|   | 24    | 121,52      | 100,1mm       | <b>951-263124</b> | <b>951-263129</b> |
|   | 42    | 212,96      | 191,6mm       | <b>951-263125</b> | <b>951-263130</b> |
| Description: 4 Rail module - 220mm deep version |       |             |               |                   |                   |
| 3U  | 12    | 60,56       | 39,2mm        | <b>951-263909</b> | <b>951-263913</b> |
|   | 14    | 70,72       | 49,3mm        | <b>951-263910</b> | <b>951-263914</b> |
|   | 21    | 106,28      | 84,9mm        | <b>951-263911</b> | <b>951-263915</b> |
|   | 24    | 121,52      | 100,1mm       | <b>951-263912</b> | <b>951-263916</b> |

### ORDER SEPARATELY

|                                 |          |                   |
|---------------------------------|----------|-------------------|
| Metal front panel bush          | pk 100   | <b>953-236506</b> |
| PCB/connector mounting brackets | pk 5 pr. | <b>951-263755</b> |
| Tapped strip M2,5 x 160mm       | pk 10    | <b>951-263756</b> |
| Tapped strip M2,5, 42HP wide    | 1        | <b>950-202739</b> |



KM6-II Plug-in units (4 rail)

