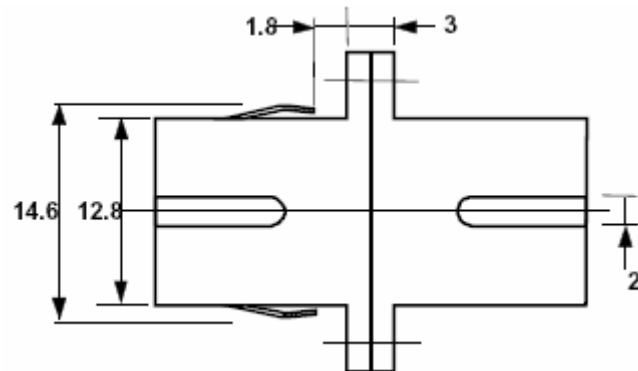
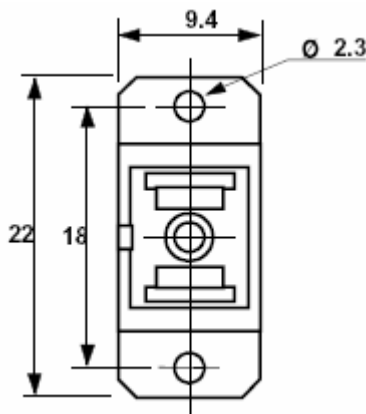
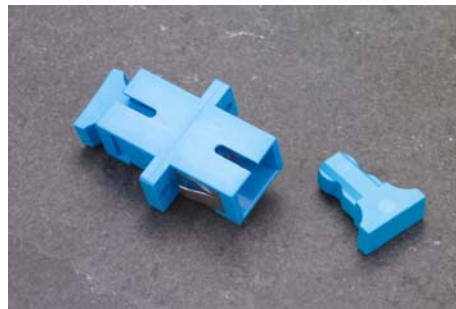
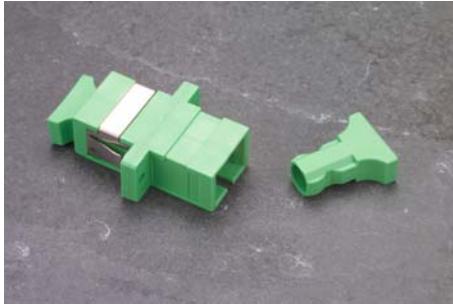


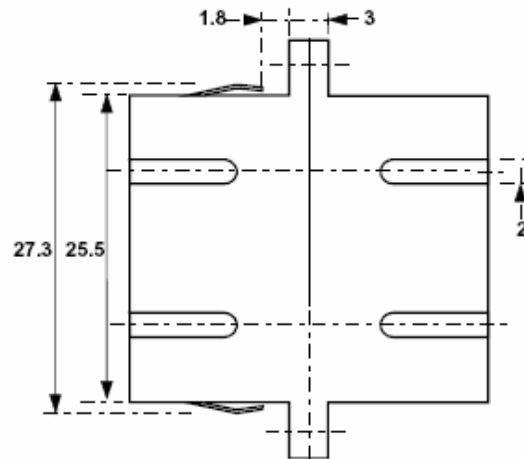
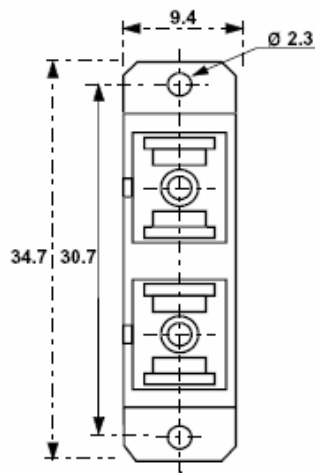
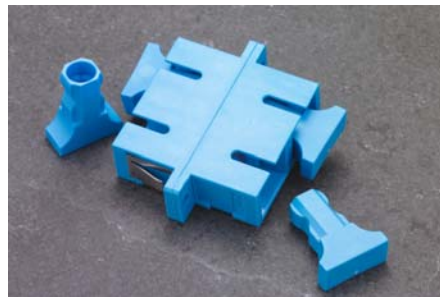
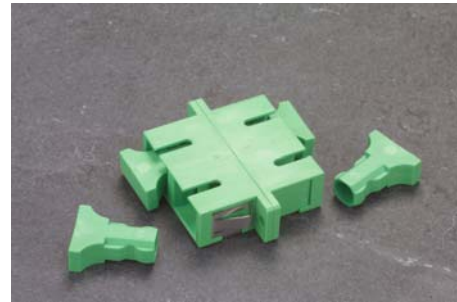
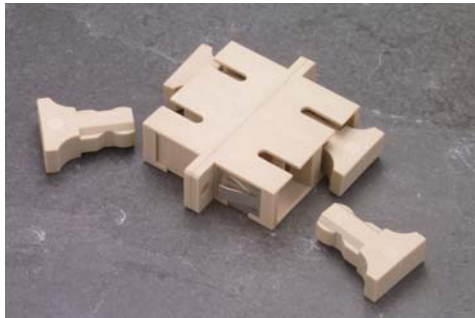
## SC Adapter

An optical fibre adapter or uniter is used to mate two connectors together, usually mounted in a distribution panel or wall box. In most cases it is the critical part of the system that aligns the ferrule part of the connectors keeping the fibres in perfect alignment.

Generally there are two types of alignment sleeve within an adapter, phosphor bronze for multi-mode or zirconia (ceramic) for single mode.



The SC has connector and adapter are the most used set for modern day optical fibre systems. With the audible click locking mechanism and pull proof design this connector provides a secure interconnect.



## Ordering information

### SC multimode

Beige adapter

Simplex	Duplex
SCUSPHRBEIGE	SCUDPHRBEIGE

### SC singlemode

Blue adapter

Simplex	Duplex
SCUSZR02	SCUDZR02

### SC singlemode APC

Green adapter

Simplex	Duplex
SCAPCUGREEN	SCAPCUDGREEN

## FibreFab Limited

Davy Avenue  
Knowlhill  
Milton Keynes  
MK5 8ND

Tel: +44 (0) 870 127 3330  
Fax: +44 (0) 870 127 3331  
Email: sales@fibrefab.com  
Internet: www.fibrefab.com

FibreFab Ltd is registered in England no. 2734823.