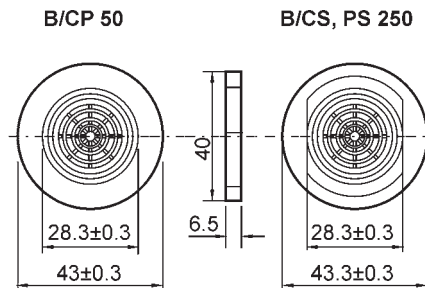
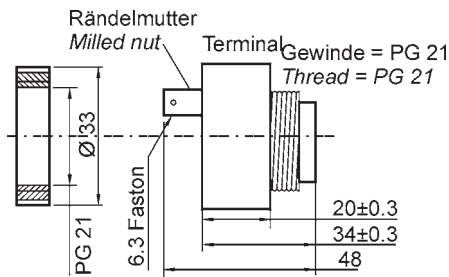
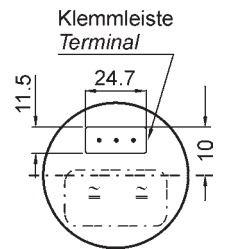
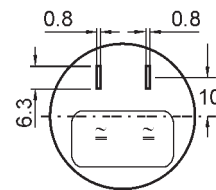
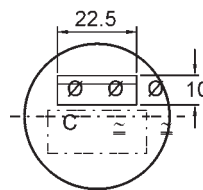
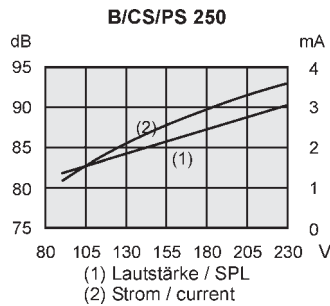
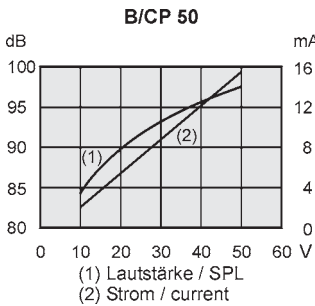


Buzzer For Panel Mounting

B/CP 50
B/CS 250
B/PS 250



Benutzung In
Deutschland
For use in
Germany



Technische Daten / technical data:	B/CP 50	B/CS 250	B/PS 250
Betriebsspannungsbereich / operating voltage range (AC / DC) (V)	12...50	110...220	110...220
Nennspannung / rated voltage (AC/DC) (V)	24	220	220
Nennstrom / rated current* (mA)	≤ 6,5	≤ 6,5	≤ 6,5
Frequenz / frequency (kHz)	3.0 ± 0.5	3.0 ± 0.5	3.0 ± 0.5
Lautstärke / sound pressure level (SPL) (dB/1m)	85 ± 3	87 ± 3	87 ± 3
Tonart / tone	konstant continuous	konstant continuous	Pulston intermittent
Betriebstemperatur / operating temperature (°C)	-40...+75	-40...+75	-40...+75
Lagertemperatur / storage temperature (°C)	-40...+75	-40...+75	-40...+75
Gewicht / weight (g)	50	ca. 120	ca. 120
Montage / mounting Einlochmontage / single hole mounting (mm)	ø 29	ø 29	ø 29
Anschlüsse / connection	Schraubklemme screwterminal	Schraubklemme screwterminal	Schraubklemme screwterminal
Farbe / colour	grau / grey	schwarz / black	schwarz / black

* Wert bei angelegter Nennspannung (AC/DC) / value applying rated voltage (AC/DC)