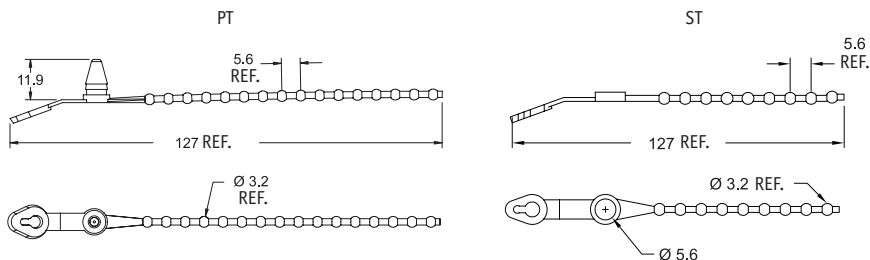


Beaded Wire Tie

PT/ST

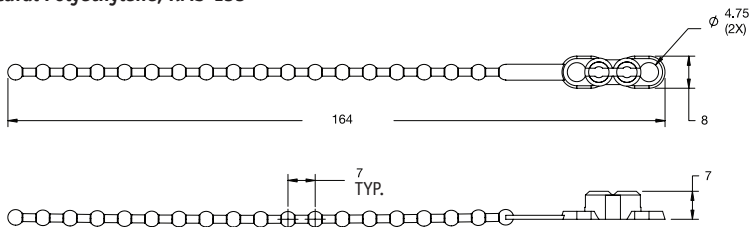


Part Number		Colour	Bundle Ø Range (mm)	Mounting Method	Panel Thickness (mm)	Std Pack Qty
PP, RMS-10	UL94 V-2 Nylon 6/6, RMS-01					
PT-203	PT-303	Black	6.4 - 31.8	Snap-lock in a Ø 6.4 hole	0.8 - 3.2	1000
PT-205	PT-305	Natural	6.4 - 31.8	Snap-lock in a Ø 6.4 hole	0.8 - 3.2	1000
ST-205	ST-305	Natural	6.4 - 31.8	Ø 5.6 clearance hole for screw	-	1000

Beaded Hanking Tie

HTE

Natural Polyethylene, RMS-155

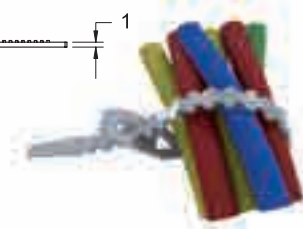
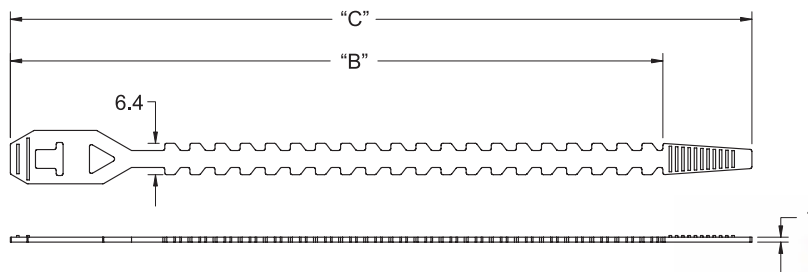


Part Number	Std Pack Qty
HTE-164-PE3L/1H	1000

Hanking Tie

HT

Natural Polyethylene, RMS-134



Part Number	Dimensions (mm)			Std Pack Qty
	Max. Bundle Ø	"B"	"C"	
HT-3.9	23	81	99	1000
HT-4.9	28	107	125	1000
HT-5.9	36	132	150	1000