



Connectors

• HelaCon Easy

Features and Benefits

The range of push-in wire connectors are used for fast, easy and reliable connection and distribution of cable and conductors in electrical housing applications. They used within a typical range of housing voltage up to 450 volts. A huge variety of input poles allow a high flexibility in application depending of the number of conductors and available space. Diameters of up to 2,5mm² can conveniently be processed and allow the use of thicker conductors when a voltage drop occurs. The flexible fixing of the double spring of HelaCon Plus allows different conductor diameters in each entry without influencing the adjacent ones. The connectors can be used in all kinds of junction boxes either on-wall or flush mounted.

Application

The HelaCon Easy connectors are used for fast, easy and reliable connection and distribution of cable and conductors in the field of electrical housing installations within junction boxes and control panels.

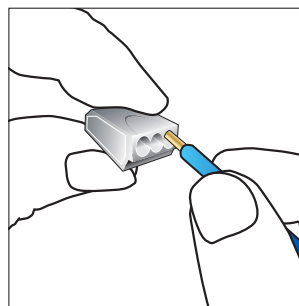
The HelaCon Easy connectors are exclusively designed for use with solid wire, available in two sizes up to 1.5 mm² and up to 2.5 mm² conductor diameter. Bent, stranded or fine-stranded conductors cannot be used with HelaCon Easy.

Application Method

- Make sure that power is turned off before installation
- Use solid copper conductors only
- Strip them off approximately 11 mm
- Insert them completely into the connector
- Use voltage tester via separate test entry
- To change or correct a wire, hold and twist it alternatively left and right while pulling the connector



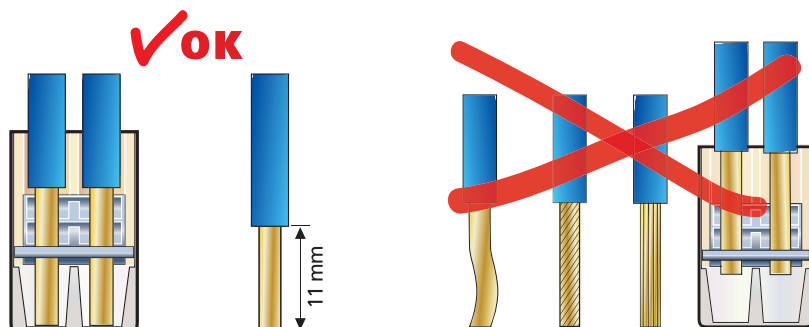
The compact design of HelaCon Easy fits perfectly in tight spaces.



Just push-in and play.



HelaCon Easy.



Solid

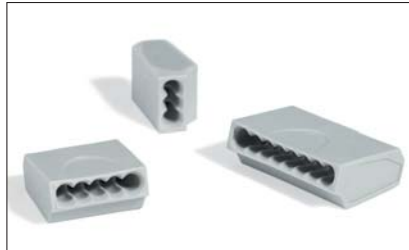


Connectors

• HelaCon Easy



HelaCon Easy.



HelaCon Easy 1.5.

Material Data HelaCon Easy

| | |
|-----------------------|---|
| Material Housing | Polyamide (PA) |
| Max Current | 24 A |
| Max Voltage | 300 V (cULus) |
| Wire Range (VDE) | 1.0 - 2.5 mm² soild |
| Stripping Length | 11 mm |
| Flammability | UL94 V2 |
| Operating Temperature | -30 °C to +110 °C (VDE), -30 °C to +105 °C (cULus) |
| Specification | VDE, FIMKO, ENEC, cULus, KEMA-KEUR, CEBC |



Material Data HelaCon Easy 1.5

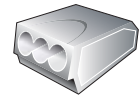
| | |
|-----------------------|---|
| Material Housing | Polyamide (PA) |
| Max Current | 17.5 A |
| Max Voltage | 450 V |
| Wire Range (VDE) | 0.5 - 1.5 mm² soild |
| Stripping Length | 11 mm |
| Flammability | UL94 V2 |
| Operating Temperature | -30 °C to +110 °C (VDE), -30 °C to +105 °C (cULus) |
| Specification | VDE, FIMKO, ENEC |



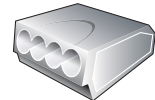
Technical Table

| Article-No. | Type | Colour | Number of Conductors | Width (W) | Height (H) | Depth (D) | Pack Cont. |
|-------------------------|-------------------|-----------|----------------------|-----------|------------|-----------|------------|
| HelaCon Easy | | | | | | | |
| 148-90006 | HECE-2 | Grey (GY) | 2 | 10.5 | 9.5 | 19.5 | 100 |
| 148-90007 | HECE-3 | Grey (GY) | 3 | 13.5 | 9.5 | 19.7 | 75 |
| 148-90008 | HECE-4 | Grey (GY) | 4 | 17.2 | 9.5 | 19.7 | 100 |
| 148-90009 | HECE-5 | Grey (GY) | 5 | 21.1 | 9.5 | 19.7 | 100 |
| 148-90010 | HECE-8 | Grey (GY) | 8 | 17.5 | 16.8 | 19.0 | 50 |
| HelaCon Easy 1.5 | | | | | | | |
| 148-90013 | HECE-3x1.5 | Grey (GY) | 3 | 11.4 | 8.8 | 18.5 | 100 |
| 148-90015 | HECE-5x1.5 | Grey (GY) | 5 | 17.2 | 8.8 | 18.5 | 100 |
| 148-90018 | HECE-8x1.5 | Grey (GY) | 8 | 26 | 8.8 | 18.5 | 75 |

All dimensions in mm. Subject to technical changes.



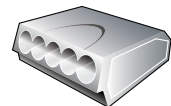
HECE-3



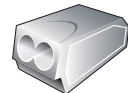
HECE-4



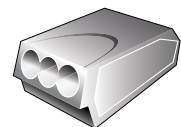
HECE-8



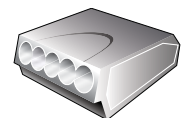
HECE-5



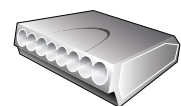
HECE-2



HECE-3x1.5



HECE-5x1.5



HECE-8x1.5

