

Flexible Couplings

Shaft encoders must be protected against excessive mechanical stresses, which occur whenever there are angular, axial, or radial misalignments between the machine and shaft encoder shafts.

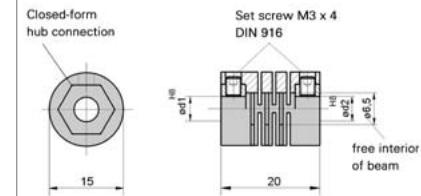
Our flexible couplings can compensate for this within limits.



PLASTIC COUPLING

Max. speed	10000 min ⁻¹
Torque max.	20 Ncm
Moment of inertia	1.1 gcm ²
Torsional spring constant	12 Nm/rad
Max. angular misalignment	±2.5°
Max. shaft misalignment radial / axial	±0.3 mm / ±0.2 mm
Max tightening torque of set screws	70 Ncm
Material	polyamide 6.6 glass-fibre reinforced
Weight approx.	6 g

Plastic coupling



Dimensions in mm

Hub diameter	5/5 mm	Ordering code 3 520 034
	5/6 mm	Ordering code 3 520 033
	6/6 mm	Ordering code 1 761 026

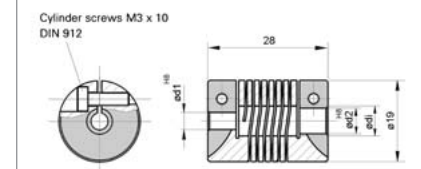
Suitable for encoder type RI39
RI32, RI41, RI42 for simple applications



HELICAL COUPLING

Max. speed	6000 min ⁻¹
Torque max.	80 Ncm
Moment of inertia	8.7 gcm ²
Torsional spring constant	14 Ncm/degree
Max. angular misalignment	±4°
Max. shaft misalignment radial/axial	±0.25 mm / ±0.4 mm
Max tightening torque of set screws	80 Ncm
Material	AlCuMgPb, chromed
Weight	16 g

Helical coupling 19/28

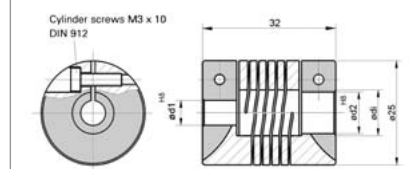


Dimensions in mm

Hub diameter	5/5 mm	Ordering code 3 520 036
	5/6 mm	Ordering code 3 520 035
	6/6 mm	Ordering code 0 070 653
	6.35/6.35 mm	Ordering code 3 520 057

Suitable for encoder type RI 30, RI 32,
RI 36, RI 41, RI 42, RI 58, AC 58

Helical coupling 25/32



Dimensions in mm

Hub diameter	6/9.53 mm	Ordering code 3 520 052
	6/10 mm	Ordering code 3 520 066
	6.35/9.52 mm	Ordering code 3 520 062
	10/12 mm	Ordering code 3 520 065
	10/10 mm	Ordering code 3 520 074

Suitable for encoder type RI 58, AC 58



Flexible Couplings

ISOLATED DISK COUPLING

Max. speed	12000 min ⁻¹
Torque max.	60 Ncm
Max. shaft misalignment radial	±0.3 mm
axial	±0.4 mm
angular	±2.5°
Torsional spring constant	30 Nm/rad
Material	Flanges aluminium, anodized
	Spring disc plastic, glass-fibre reinforced

Hub diameter

5/6 mm	Ordering code 3 520 080	Suitable for encoder type RI 30,
6/10 mm	Ordering code 3 520 081	RI 32, RI 36, RI 41, RI 42, RI 58, AC 58
6/6.35 mm	Ordering code 3 520 082	
6/9.53 mm	Ordering code 3 520 083	
6.35/6.35 mm	Ordering code 3 520 084	
7/7 mm	Ordering code 3 520 085	
10/10 mm	Ordering code 3 520 086	
	Ordering code 3 520 088	

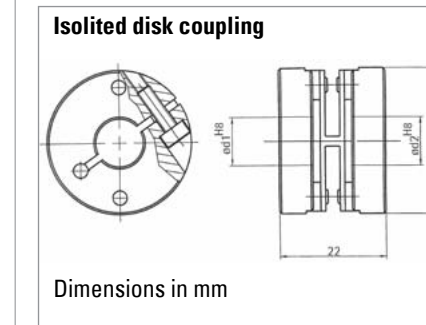


DISK COUPLING

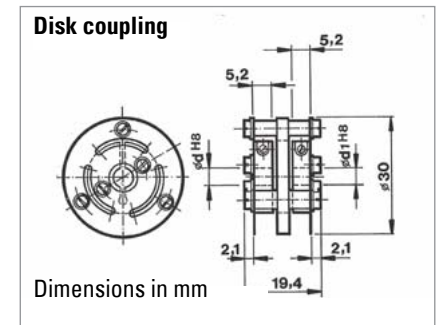
Max. speed	12000 min ⁻¹
Torque max.	80 Ncm
Moment of inertia	19 gcm ²
Torsional spring constant	150 Nm/rad
Max. angular misalignment	±3.0°
Max. shaft misalignment radial	±0.4 mm
axial	±0.4 mm
Max tightening torque of set screws	80 Ncm
Material	coupling body, flange AlCuMgPb, anodized
Weight approx.	14.5 g

Ordering code 0 070 663 suitable for encoder type RI 36, RI 58, AC 58

DIMENSIONAL DRAWINGS



Dimensions in mm



Dimensions in mm

Flexible Couplings



BELLOWS COUPLING

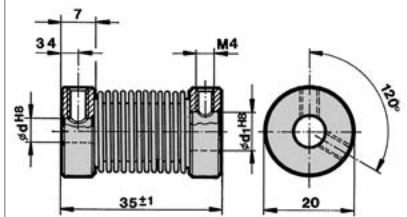
Max. speed	8000 min ⁻¹
Torque max.	80 Ncm
Moment of inertia	9 gcm ²
Torsional spring constant	140 Nm/rad
Max. angular misalignment	±4.0°
Max. shaft misalignment radial	±0.3 mm
axial	±0.5 mm
Max tightening torque of set screws	150 Ncm
Material flange	aluminium
bellows	stainless steel
Weight	16 g

Hub diameter
12/12 mm
10/10 mm
9.53/9.53 mm
6/6 mm

Ordering code 0 070 666
Ordering code 3 520 037
Ordering code 3 520 038
Ordering code 3 520 068

Suitable for type RI 58, AC 58

Bellows coupling



Dimensions in mm

CLAMPING ECCENTRIC

SQUARE FLANGE ADAPTER 80 x 80 mm for clamping flange RI 58, AC 58

(fastening material included)

Ordering code 1 522 327

SQUARE FLANGE ADAPTER 58 x 58 mm for clamping flange RI 58, AC 58

(fastening material included)

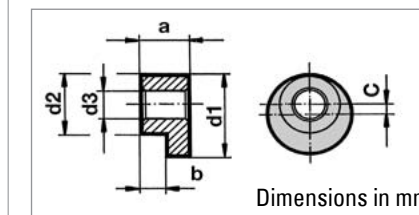
Ordering code 1 522 326

Mounting

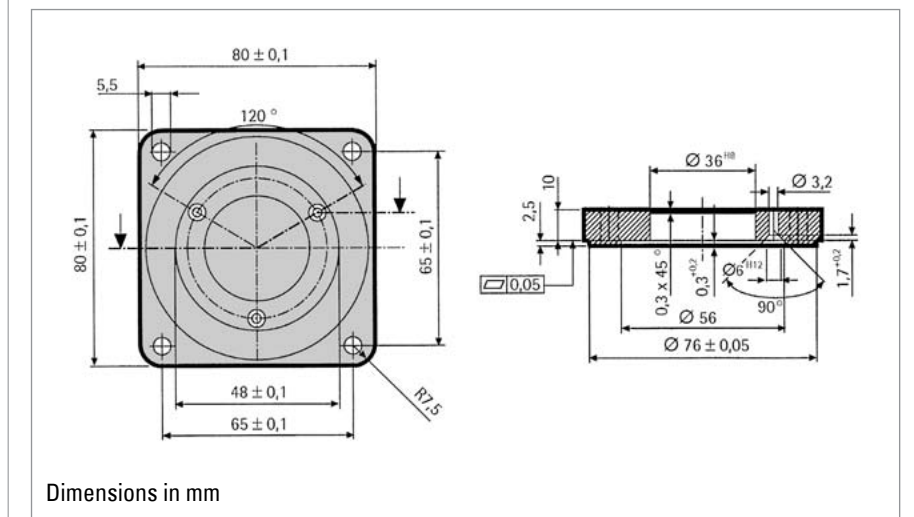
Material CuZn39Pb3, surface nickel-plated
Set of three

Suitable for encoders with synchro flange type RI 30, RI 36, RI 58, AC 58

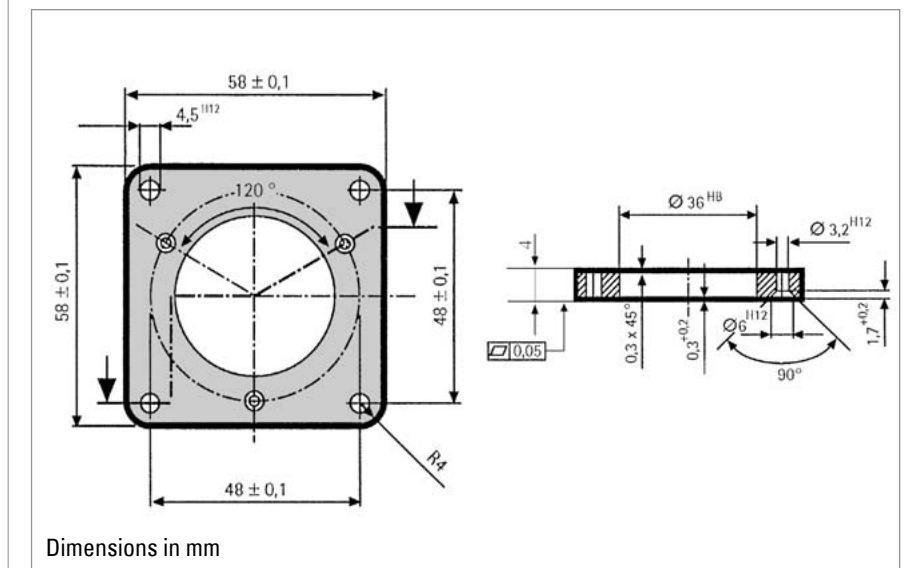
	ød ₁	ød ₂	ød ₃	a	b	c
Ordering code 0 070 655 (RI 58, AC 58) Synchro flange for M3)	8.9 _{-0.1}	6.5	3.2	4.9 _{-0.1}	2.9 _{-0.1}	1.2
Ordering code 0 070 657 (RI 58, AC 58) Synchro flange for M3)	12	9	3.5	4.9 _{-0.1}	2.9 _{-0.1}	1.5
Ordering code 0 070 654 (RI 30, RI 36) Synchro flange for M2.5)	6.8 _{+0.2}	5	2.8	4.4 _{-0.1}	2.4 _{-0.1}	0.9



Dimensions in mm



Dimensions in mm



Dimensions in mm