



## Connectors

### • HelaCon Lux

#### Features and Benefits

HelaCon Lux is best suitable to connect solid and flexible wire. It combines the push-in connector technology that is well known from HelaCon Easy with a lock/unlock spring mechanism to connect fine-stranded conductors. They may be used within a typical housing range of 450 V / 24 A. The two available variants showing either one or two inputs for solid conductor on the installation side offer high flexibility in application. Instead of using screwed terminal blocks the tool-free application of the lighting connectors results in an easy, time-saving and safe connection of conductors. The user benefits from this especially in overhead work and when wires are difficult to access

#### Application

A typical application is lighting installation, where the solid conductor from concealed cabling has to be connected to a flexible conductor for lightings. The 2/1 variant allows the looping through of the supply lines for additional devices.

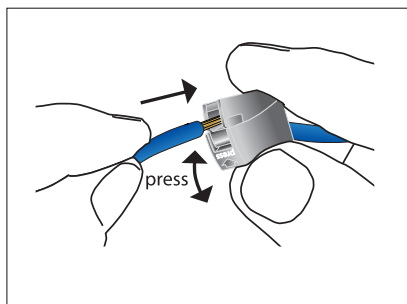
The conductor on the output/lighting side can easily be inserted by pressing the locking mechanism and can be released in the same way at any time. The lighting side can carry any kind of conductor and makes HelaCon Lux connectors also useful to connect devices that carry flexible connecting cables like control devices e.g. for blinds, fans and other drives.

#### Application Method

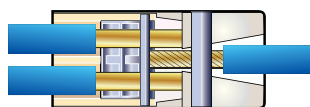
- Do not work under load
- Strip off the conductors 9 - 11 mm
- Push in the solid conductor into the round input on the installation side
- Unlock the lighting side by pressing the connector's rectangular input
- Insert the lighting conductor and release the connector
- To remove, simply press the connector again and withdraw the conductor
- The installation side can easily be removed by twisting and pulling the conductor
- The test entry can be used to check the voltage with a meter



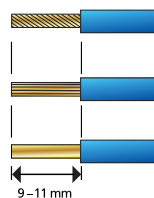
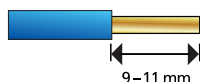
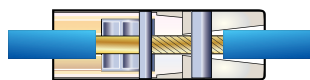
Quick installation and release of lighting devices with HelaCon Lux.



Tool-free connection of lightings.



Installation side: 0.75 – 2.5 mm<sup>2</sup> solid



Lighting side: 0.5 – 2.5 mm<sup>2</sup>  
solid, stranded, fine stranded

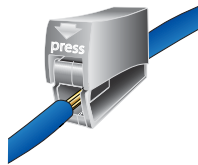


## Connectors

### • HelaCon Lux



HelaCon Lux 1/1.



HelaCon Lux 2/1.



#### Material Data

Material Housing	<b>Polyamide 6.6 (PA66)</b>
Max Current	<b>24 A</b>
Max Voltage	<b>450 V</b>
Wire Range (VDE)	<b>0.5 (0.75) - 2.5 mm<sup>2</sup></b>
Stripping Length	<b>11 mm</b>
Flammability	<b>UL94 V2</b>
Operating Temperature	<b>-5 °C to +100 °C</b>
Specification	<b>VDE, FIMKO, ENEC, cULus, KEMA-KEUR, CEBC</b>



#### Technical Table

Article-No.	Type	Colour	Number of Conductors	Width (W)	Height (H)	Depth (D)	Pack Cont.
148-90022	HECL-1/1	Grey (GY)	2	8.1	15.8	20.8	100
148-90023	HECL-2/1	White (WH)	3	9.5	15.8	20.8	100

All dimensions in mm. Subject to technical changes.

