

FS-100E 2.0 - 15.0 l/min with pre-adjusted set points
 FS-100E-A 1.0 - 16.0 l/min with adjustable set points

FLOW SWITCHES

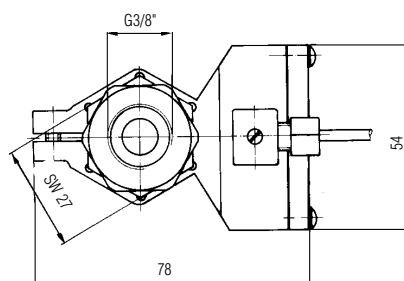
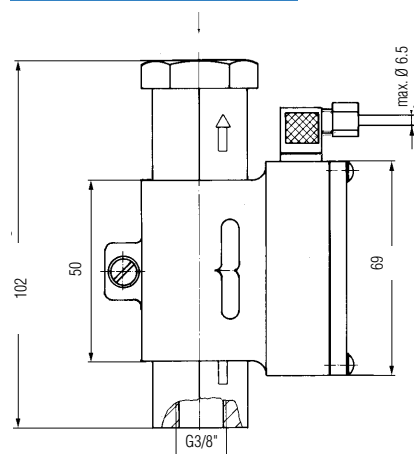
PISTON TYPE

The FS-100E version (with pre-adjusted set points 2.0 . . . 6.0 l/min) operates in vertical mounting position only. It is equipped with a calibrated piston which is displaced by liquid flow to magnetically actuate a hermetically sealed reed switch isolated within the unit body. When flow decreases the piston returns to its prior position by its own weight and deactuates the reed switch. The FS-100E version (with pre-adjusted set points 5.0 . . . 15.0 l/min) operates with the same principle but a positive spring-return deactuates the switch when flow decreases. Mounting is possible in any position.

The FS-100E-A (adjustment range 1.0 . . . 16.0 l/min) operates according to the same principle as the FS-100E with spring. The FS-100E-A is provided with an additional scale on the brass body on which set points as well as setting functions can be adjusted in one operation. Only the mark of the junction box has to be moved over the respective scale value. Pressure drop is not influenced at all when changing set points.

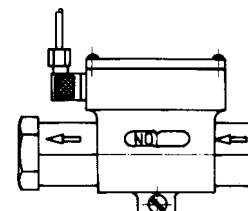


Dimensions (in mm)



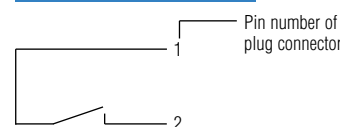
- Housing: Brass
- Piston: Brass
- O-Ring: Buna N
- Spring: Stainless Steel
- Magnet: Ferrite

Set point adjustment/
Contact configuration



Adjust the housing to setting required

Wiring diagram



Standard Products in **bold**

Specifications

(all data related to water at +20°C)

| | FS-100E | FS-100E-A |
|--------------------------------------------------------|-------------------------------------------------------------------------|---------------------------|
| Max. flow | 24 . . . 40 l/min. | 55 l/min |
| Max. operating pressure | 50 bar | 50 bar |
| Max. pressure drop | 0.3 bar | 0.3 bar |
| Max. operating temperature | +90 °C | +90 °C |
| Set points | see order number | adjustable 1 ... 16 l/min |
| Switching function (related to increasing flow) | NO/NC; the required function may be adjusted by moving the junction box | |
| Mounting position | see order number | any position |
| Factory calibration position | vertical, inlet port down | vertical, inlet port down |
| Repeatability | ± 1% | ± 1% |
| Adjustment accuracy | ±10% | ±10% |
| Hysteresis | max. 5% | max. 20% |
| Mountings | G 3/8" | G 3/8" |
| Electrical connections | miniature plug connector with cable gland (max. cable ø: 6.5 mm) | |
| Enclosure | IP 65 | IP65 |
| Electrical data contact rating | 40 VA, 2 A, 220 V~ | 40 VA, 2 A, 220 V~ |
| Weight | appr. 0.5 kg | appr. 0.5 kg |

How to Order

| | set points (l/min) | Mounting position | order number |
|-----------|--------------------|-------------------|-----------------|
| FS-100E | 2.0 | vertical | 020-0402 |
| | 3.0 | vertical | 020-0403 |
| | 4.0 | vertical | 020-0404 |
| | 5.0 | vertical | 020-0405 |
| | 6.0 | vertical | 020-0406 |
| | 5.0 | any position | 020-0505 |
| | 6.0 | any position | 020-0506 |
| | 7.0 | any position | 020-0507 |
| | 8.0 | any position | 020-0508 |
| | 9.0 | any position | 020-0509 |
| | 10.0 | any position | 020-0510 |
| | 11.0 | any position | 020-0511 |
| | 12.0 | any position | 020-0512 |
| | 13.0 | any position | 020-0513 |
| | 14.0 | any position | 020-0514 |
| 15.0 | any position | 020-0515 | |
| FS-100E-A | | any position | 020-0315 |

Pressure Drop Diagram

