

# Specialty Hand Tools and Accessories

## Easier on the Hand, Precise on the Crimp



### PRO-CRIMPER III Hand Tool

Part No. 354940-1

The PRO-CRIMPER III Hand Tool combines the versatility of general purpose service tools with the reliability and ease of use of many premium grade tools. It is ideally suited for R&D prototyping, networking applications, and commercial, industrial, and institutional maintenance work. The precision design and manufacturing techniques that go into this tool ensure reliable, repeatable performance. The new handles and head design result in increased usable lifecycle.

**Versatile.** As part of the SDE family of tools, the system accommodates dozens of interchangeable dies in an ever-expanding range, including those for open-barrel contacts and terminals. Many die sets have multiple cavities for crimping more than one wire or terminal size at the same time.

**Dependable.** The tool is constructed of durable high-carbon steel with extra strength pivot pins, for maximum reliability and long-life precision. Locators are included with pin-and-socket style tools. They help properly locate the contact in the die set, provide a wire stop, and help minimize contact rotation and bending during crimping.

**Convenient.** User convenience and comfort features are evident throughout. User-adjustable ratchet control is provided for complete crimp cycling that helps eliminate partial crimps. An emergency ratchet release allows the user to open the tool jaws at any time during the crimp cycle. To reduce handle force, the linkage was designed to match the forces required to crimp our largest insulated terminal. The result is dramatically less hand force than comparable tools. The angled head and specially designed handles provide comfortable operation.

**Quality.** Every tool crimps with precision, because every tool incorporates the traditional quality of all AMP products.



### SDE PEW 12 Hand Tool

Part No. 9-1478240-0

The unique geometry of this tool results in a comfortable, easy-to-use handle design that is unmatched in the market.

- Easy accessibility for space-constrained applications
- Large crimp jaw arc, minimizing "roll" in open barrel applications
- User-adjustable ratchet control and emergency ratchet release
- Compatible with over 100 interchangeable SDE dies



### SDE DA Hand Tool

Part No. 1213745-1

This tool is specifically designed for closed barrel SDE dies. It incorporates all the convenient operational features of the SDE family.

- Excellent mechanical advantage, enhancing user comfort
- Adjustable ratchet with emergency release

#### Fast Facts

These versatile hand tools are ideally suited for R&D, networking applications, and on-site maintenance work.

- User-adjustable ratchet control for a complete crimping cycle
- Emergency ratchet release
- Angled head, providing a comfortable hand and wrist position
- Over 100 interchangeable SDE die sets to crimp a broad range of connectors
- Able to handle multiple wire and terminal sizes in one die set
- Precision construction of durable high-carbon steel
- Extra strength pivot pins for maximum durability
- Engineered and manufactured using processes independently certified to internationally recognized quality standards ISO-9001:2000 and Telecommunications Industry Standard TL 9000.

## Hand Tool Kits

AMP specialty hand tools are available in convenient kits that contain the tooling, terminations, and spare parts you need for your crimping operations.



### *PRO-CRIMPER III Hand Tool PIDG and PLASTI-GRIP Terminal Kit, Part No. 55823-1*

Includes hand tool (Part No. 58433-3), 225 insulated ring and spade terminals in 12-10, 16-14 and 22-16 AWG [3.0-5.0, 1.3-2.0 and 0.3-1.3 mm<sup>2</sup>] wire sizes.



### *BNC Premises Wiring Kit, Part No. 58477-1*

Includes hand tool (Part No. 58433-1); plugs—5 RG-58, 10 RG-59/62, 5 RG-58 plenum and RG-59/62 plenum sizes; adapters—2 jack-to-jack and 2 “T”.



### *Carrying Case (Empty), Part No. 679223-1*

Includes two empty storage boxes for die sets.

### *PRO-CRIMPER III Hand Tool Repair Kit, Part No. 679221-1*

Includes retaining rings, handle return spring, pawl spring, pivot pins, pawl pin, ratchet pawl, die pins, nut and die set screws.

## Custom Crimp Dies

If you need custom crimp dies, Tyco will design and prototype them for you. A minimum order of 3 pieces is required.

Contact the Tooling Assistance Center at 1-800-522-6752 for more information.

## Manual Wire Preparation

A full selection of manual wire strippers complements these tools, providing a complete solution for convenient, correct wire termination.

### *Coax Stripper, Part No. 1490490-1*

- 3 blades designed to strip RG-6, RG-58, RG-59 cable in one step
- Replaceable blade cartridges



### *Cyclops Cable Stripper, Part No. 1375317-1*

- Outer sheath stripper
- Automatically adjusts to different cable thicknesses
- Works on cable diameters up to 11 mm [0.43 in]



### *Economy Wire Stripper and Cutter, Part No. 1490491-1*

- Strips 10-24 AWG [5.26-0.2 mm<sup>2</sup>]
- Adjustable to any of 8 wire sizes



### *Rotary Cable Stripper, Part No. 606700-1*

- Round cable tool can be used on single- or multiple-conductor cable up to 44.5 mm [1.75 in]



### *Automatic Wire Stripper, Part No. 734185-1*

- Strips PVC, THHN, and THHW
- Adjustable wire stop
- Built-in cutter
- Strips 10-28 AWG [5.26-0.09 mm<sup>2</sup>]



**tyco**  
Electronics

**AMP**

Need More Information?

For information about tooling, call 1-800-522-6752 or e-mail [toolsales@tycoelectronics.com](mailto:toolsales@tycoelectronics.com).

For drawings or technical data, contact your Tyco Electronics sales engineer or call the Technical Support Center: 1-800-522-6752. Dimensions are in millimeters unless specified otherwise. Values in brackets are English equivalents unless specified otherwise. Specifications subject to change. Consult Tyco Electronics for latest specifications.

## Connector/Terminal-to-Tool Reference

Product Family	Catalog Number <sup>1</sup>	AMP® Product	RG/U Cable <sup>2</sup> Wire Size	Termination Type/Style	Part Number		
					P/N 354940-1 with SDE Die Set	SDE Die Set Only	
Coaxial Connectors	82074	50 Ohm BNC and TNC	RD 316, 180, 195, Belden 8218	"O"/Commercial	—	58539-1	
			58, 62, 59	"O"/Commercial	58433-1	58435-1	
			Belden 9248, 9114	Hex/Commercial	58433-2	58436-1	
			174, 188, 316, 179, 161, 187	"O"/Commercial	—	58539-1	
			62, 59	"O"/Commercial	318450-1	318450-2	
		50 Ohm BNC	Belden 9907, 89907, Comm/Scope 2104	"O"/Commercial	318452-1	318452-2	
			174, 188, 316, 179, 161, 187	Hex/Commercial	—	58436-3	
			62, 59, Belden 9104, 9112	"O"/Commercial & Military	—	58537-1	
			Belden 8281, 9141	Hex/Commercial	—	58436-2	
				"O"/Commercial & Military	—	58538-1	
			180, 195, Belden 8218, 9248, 9114	"O"/Commercial	—	58539-1	
			58	"O"/Military	—	220189-3	
		75 Ohm BNC and TNC	62, 59	"O"/Commercial	—	58536-1	
			6, Belden 8281	"O"/Commercial	—	58538-1	
		75 Ohm BNC	179, 161, 187	"O"/Commercial	318451-1	318451-2	
			62, 59	Hex/Commercial	58531-2	58425-2	
			Double Braid 59, Belden 8281, 9141	Hex/Commercial	58531-1	58425-1	
			Belden 9248, 9114	Hex/Commercial	58531-3	58425-3	
			Belden 8218	"O"/Commercial	—	58536-1	
		50 and 75 Ohm BNC	Belden 8218	"O"/Commercial	—	58174-1	
		50 Ohm N	6, Belden 8281	"O"/Commercial	—	58538-1	
			58, 62, 59	Hex/Commercial	58433-2	58436-1	
		Miniature UHF	8, 213, 11, 216, 9, 214	Hex/Commercial	58501-1	58485-1	
			58	Dual Crimp	58506-3	220196-1	
		50 Ohm SMB	174, 316, 188, 179, 161, 187, RD 316, 188 Double Braid	Hex/Commercial	58500-1	58489-1	
			178, 196, 174, 316, 188, 179, 161, 187	Hex/Military	58499-1	58483-1	
		50 and 75 Ohm Consumer BNC	58, 62, 59	Hex/Commercial	—	58046-1	
			174, 316, 188, 179, 161, 187	"F" / "O"	58558-1	58558-2	
		Series F CATV Plugs	58, 6, 7 6.6, 8.2, 9.8 [0.259, 0.324, 0.384] Dia.	"F" / "O"	58559-1	58559-2	
			59, 6, 7 7.4, 8.7 [0.290, 0.343] Dia.	Hex/Commercial	58621-1	58621-2	
			59, 6 9.1 [0.360] Dia.	Hex/Commercial	58622-1	58622-2	
		Braid-Pic Braid Termination	58, 62, 59	Hex/Commercial	58663-1	58663-2	
Terminals And Splices	82042	Insulated Terminals and Splices (PIDG and PLASTI-GRIP)	22-16 AWG [0.3-1.3 mm <sup>2</sup> ]	—	58433-3 <sup>3</sup>	58423-1 <sup>3</sup>	
			16-14 AWG [1.3-2.0 mm <sup>2</sup> ]	—			
			12-10 AWG [3.0-5.0 mm <sup>2</sup> ]	—			
	65505	Uninsulated Terminals and Splices (SOLISTRAND)	22-10 AWG [0.3-5.0 mm <sup>2</sup> ]	—	58546-1	58545-1	
	65472	Closed End Splices	ECV-ECN 18-16 AWG [0.8-1.3 mm <sup>2</sup> ]	—	217212-1	217212-2	
			ECN 18-10 AWG [0.8-5.0 mm <sup>2</sup> ]	—			
			ECV-ECN 18-10 AWG [0.8-5.0 mm <sup>2</sup> ]	—			
Spare Wire Caps	0.048-0.225 [1.22-5.72] Ins. Dia.	—	58573-1	—			
Receptacles and Tabs	82004	FASTON 250 Series Recpt.	18-14 AWG [0.8-2.0 mm <sup>2</sup> ]	—	58524-1	58524-2	
			14-10 AWG [2.0-5.0 mm <sup>2</sup> ]	—	58525-1	58525-2	
		Ultra-Fast FASTON (Straight)	0.110/0.125 in. Recpt.	26-14 AWG [0.13-2.0 mm <sup>2</sup> ]	—	58628-1	58628-2
			0.187/0.250 in. Recpt., 0.250 in. Tabs		—		
0.250 in. Recpt.	12-10 AWG [3.0-5.0 mm <sup>2</sup> ]	—	58630-1	58630-2			

<sup>1</sup> Request catalog for detailed product information.

<sup>2</sup> Coaxial cable of similar size can be crimped. Request Catalog 82074 for a complete listing of possible cable sizes.

<sup>3</sup> Not for use with PIDG FASTON receptacles; crimp not approved by UL or CSA.

**tyco**  
Electronics

**AMP**

Need More Information?

For information about tooling, call 1-800-522-6752 or e-mail [toolsales@tycoelectronics.com](mailto:toolsales@tycoelectronics.com).

For drawings or technical data, contact your Tyco Electronics sales engineer or call the Technical Support Center: 1-800-522-6752. Dimensions are in millimeters unless specified otherwise. Values in brackets are English equivalents unless specified otherwise. Specifications subject to change. Consult Tyco Electronics for latest specifications.

## Connector/Terminal-to-Tool Reference (continued)

Product Family	Catalog Number <sup>1</sup>	AMP® Product	Cable or Wire Size	Part Number	
				P/N 354940-1 with SDE Die Set	SDE Die Set Only
Fiber Optic Connectors	82164 and 296355	FSMA and ST-Style (S.S.) Connectors (504XXX Series only)	3.0 mm Jacket Dia.	58551-1*	58552-1
		ST-Style, FC Type, D4 and AMP® SC Connectors	3.0 mm Jacket Dia <sup>†</sup>	58433-4*	58424-1
		ST-Style (Ceramic) Connectors	3.8 mm Jacket Dia.	—*	503890-1
		FC Type and AMP® SC Connectors (Next Generation)	3.0 mm Jacket Dia.	503911-1**	503910-1
		FSD, FSD MC and RSD Connectors; FSD Breakout Kit	DUALAN and LDD	58519-1*	58510-1
		LightCrimp XTC Connectors Ceramic/Polymer/S.S.)	3.0 mm Jacket Dia.	503568-1*	503567-1
		LightCrimp SC (Ceramic) Connectors	3.0 mm Jacket Dia.	503699-1*	503698-1
	—	1307099	LightCrimp Plus ST-Style AMP® SC	3.0 mm Jacket Dia. 3.0 mm Jacket Dia.	492623-1*** 492782-1***
Pin and Socket Connectors	—	Multimate Contacts	1 mm Plastic Fiber, 2.2 mm Jacket Dia.	217211-1	217211-2
		82068	D-Subminiature 20 DF Pin and Socket Contacts (AMPLIMITE)	28-24 AWG [0.08-0.2 mm <sup>2</sup> ]	58448-2
	24-20 AWG [0.2-0.6 mm <sup>2</sup> ]				
	D-Subminiature 22 DF Pin and Socket Contacts (AMPLIMITE)		28-22 AWG [0.08-0.3 mm <sup>2</sup> ]	90800-1	90800-2
	Type II Pin and Socket Contacts	24-14 AWG [0.2-2.0 mm <sup>2</sup> ]	58541-1	58541-2	
	Type III+ and Type VI Pin and Socket Contacts	28-24 AWG [0.08-0.2 mm <sup>2</sup> ]	58495-1	58495-2	
		24-20 AWG [0.2-0.6 mm <sup>2</sup> ]			
		18-16 AWG [0.8-1.4 mm <sup>2</sup> ]			
	82181	0.093 Soft Shell Commercial Pin and Socket Contacts	24-18 AWG [0.2-0.9 mm <sup>2</sup> ]	90872-1	90872-2
			20-14 AWG [0.6-2.0 mm <sup>2</sup> ]	90871-1	90871-2
		0.062 Soft Shell Commercial Pin and Socket Contacts	30-24 AWG [0.05-0.2 mm <sup>2</sup> ]	90870-1	90870-2
			24-18 AWG [0.2-0.9 mm <sup>2</sup> ]	90869-1	90869-2
		MR Pin and Socket Contacts	26-18 AWG [0.13-0.9 mm <sup>2</sup> ]	58514-1	58514-2
			24-18 AWG [0.2-0.9 mm <sup>2</sup> ]	90548-1	90548-2
		Universal MATE-N-LOK II and Universal MATE-N-LOK Pin and Socket Contacts	20-14 AWG [0.6-2.0 mm <sup>2</sup> ] 1.52-3.30 [0.060-0.130] Ins. Dia.	90546-1	90546-2
			20-14 AWG [0.6-2.0 mm <sup>2</sup> ] 3.30-5.08 [0.130-0.200] Ins. Dia.	90547-1	90547-2
		Mini-Universal MATE-N-LOK Pin and Socket Contacts	12-10 AWG [3-5 mm <sup>2</sup> ]	58530-1	58530-2
			26-22 AWG [0.13-0.3 mm <sup>2</sup> ]	90758-1	90758-2
			22-18 AWG [0.3-0.9 mm <sup>2</sup> ] or Two 22 AWG 20-16 AWG [0.6-1.4 mm <sup>2</sup> ] or Two 20 AWG	90759-1 90760-1	90759-2 90760-2
		Commercial MATE-N-LOK Pin and Socket Contacts	24-18 AWG [0.2-0.9 mm <sup>2</sup> ]	90574-1	90574-2
20-14 AWG [0.6-2.0 mm <sup>2</sup> ]	90575-1		90575-2		
Receptacle and Tab Connectors	—	Dynamic Series D-3 Contacts	24-20 AWG [0.2-0.56 mm <sup>2</sup> ]	90683-1	90683-2
	—		20-16 AWG [0.5-1.42 mm <sup>2</sup> ]	90684-1	90684-2
	65481	AMPSEAL Automotive Receptacles AMP SUPERSEAL 1.5 SERIES Contacts	26-22 AWG [0.13-0.3 mm <sup>2</sup> ]	58517-1	58517-2
			20-16 AWG [0.5-1.25 mm <sup>2</sup> ]	58529-1	58529-2
	124962	El Series Receptacle Contacts	0.5-1.5 mm <sup>2</sup>	58583-1	58583-2
		Universal Power Contacts	26-20 AWG [0.13-0.6 mm <sup>2</sup> ]	58548-1	—
Modular Plugs	82066	Modular Plugs (10 Pos.)	26-16 AWG [0.13-1.4 mm <sup>2</sup> ]	58564-1	—
		Modular Plug Strain Relief	28-24 AWG [0.08-0.2 mm <sup>2</sup> ] <sup>†</sup>	58560-1	58560-2
PC Card Connectors	65701	INFOPORT Series III Shield Kit	5.08 [0.200] Max. Ins. Dia.	—	852681-1
Universal Data Connector Kits	82164	AMP® Crimp Ring	3.43-3.81 [0.135-0.150] Ins. Dia.	224933-1	224933-2
			Type 1, 2, 6, 9 and MONTROSE	—	58450-1

Request catalog for detailed product information.

<sup>†</sup> Terminates cable with 24 AWG [0.2 mm<sup>2</sup>] conductors with 0.039 [0.99] Max. O.D.

\* Tool Frame Part No. 58532-1.

\*\* Tool Frame Part No. 58588-1.

\*\*\* Tool Frame Part No. 58532-2.

**tyco**  
Electronics

**AMP**

Need More Information?

For information about tooling, call 1-800-522-6752 or e-mail [toolsales@tycoelectronics.com](mailto:toolsales@tycoelectronics.com).

For drawings or technical data, contact your Tyco Electronics sales engineer or call the Technical Support Center: 1-800-522-6752. Dimensions are in millimeters unless specified otherwise. Values in brackets are English equivalents unless specified otherwise. Specifications subject to change. Consult Tyco Electronics for latest specifications.

## Connector/Terminal-to-Tool Reference (continued)

Manufacturer	Terminal	Wire Size	Part Number	
			P/N 354940-1 with SDE Die Set	SDE Die Set Only
T&B	Sta-Kon Nylon and Vinyl Insulated Terminals and Splices	22-10 AWG [0.3-5.0 mm <sup>2</sup> ]	58433-3	58423-1
	Sta-Kon Uninsulated Terminals and Splices	22-10 AWG [0.3-5.0 mm <sup>2</sup> ]	58546-1	58545-1
Panduit	Pan-Term Nylon and Vinyl Insulated Terminals and Splices	22-10 AWG [0.3-5.0 mm <sup>2</sup> ]	58433-3	58423-1
	Pan-Term Uninsulated Terminals and Splices	22-10 AWG [0.3-5.0 mm <sup>2</sup> ]	58546-1	58545-1
Molex	Insulkrimp Vinyl Insulated Terminals and Splices	22-10 AWG [0.3-5.0 mm <sup>2</sup> ]	58433-3	58423-1
	Avikrimp Nylon Insulated Terminals and Splices	22-10 AWG [0.3-5.0 mm <sup>2</sup> ]	58433-3	58423-1
	Versakrimp Uninsulated Terminals and Splices	22-10 AWG [0.3-5.0 mm <sup>2</sup> ]	58546-1	58545-1

Note: All terminals are crimped to UL 486 tensile requirements.

Premium Coax Dies—when used in combination with the proper connectors, meet all applicable Tyco termination and performance requirements

Part No. <sup>1</sup>	Description
91900-1	Fiber Optic
91901-1	BNC RG 55B
91902-1	N Series RG 141
91903-1	TNC RG 59
91904-1	Coax RG 187
91904-2	Coax RG 59,62
91904-3	Coax RG 55
91904-4	Coax RG 58
91905-1	ARINC 3 crimp
91907-1	ARINC #8 Triax
91908-1	SMA RG 188, 58
91909-1	BNC Coax
91910-1	Coax RG 187
91911-1	Coax RG 187
91911-2	Coax RG 180
91911-3	Coax
91911-4	Coax
91912-1	Coax
91912-3	Mini Coax
91912-5	Mini Coax

Part No. <sup>1</sup>	Description
220189-1	Comm BNC, RG 58
220189-2	Comm BNC, RG 59
220189-3	Comm BNC
1424050-1	BNC
91963-2 <sup>2</sup>	Premium PIDG Die Assy, 16-14 AWG (Same as crimp form in 47387)
91964-2 <sup>2</sup>	Premium PIDG Die Assy, 22-16 AWG (Same as crimp form in 47386)
91965-2 <sup>2</sup>	Premium PIDG Die Assy, 12-10 AWG (Same as crimp form in 59239-4)

1. Premium coax SDE die set only. Requires additional hand tool or power source.
2. These die options provide the same crimp profiles as those provided in our CERTI-CRIMP hand tool line and include adjustable insulation. The CERTI-CRIMP options have attained MIL-T-7928 qualification, when used with the correct terminals.



A copy of the certificate is available upon request.

©2005 by Tyco Electronics Corporation.  
All Rights Reserved. AMP, AMPLIMITE, AMPSEAL, AMP SUPERSEAL 1.5 SERIES, DUALAN, FASTON, FSD, INFOPORT, LightCrimp, MATE-N-LOK, PIDG, PLASTI-GRIP, PRO-CRIMPER, RSD, SOLISTRAND and TYCO are trademarks.

Avikrimp, Insulkrimp, and Versakrimp are trademarks of Molex.; Belden is a trademark of Belden Wire and Cable of Cooper Industries.; Sta-Kon is a registered trademark of Thomas & Betts Corporation.; ST-Trademark of American Telephone & Telegraph Co.; MONTRÖSE-Trademark of MONTRÖSE Products Co.; Pan-Term is a registered trademark of Panduit Corporation.

**tyco**  
Electronics

**AMP**

Need More Information?

For information about tooling, call 1-800-522-6752 or e-mail [toolsales@tycoelectronics.com](mailto:toolsales@tycoelectronics.com).

For drawings or technical data, contact your Tyco Electronics sales engineer or call the Technical Support Center: 1-800-522-6752. Dimensions are in millimeters unless specified otherwise. Values in brackets are English equivalents unless specified otherwise. Specifications subject to change. Consult Tyco Electronics for latest specifications.

# 626 Pneumatic Tool System

## Convenient Crimping Power for Production Workloads



The 626 Pneumatic Tool System is well suited for low- to medium-volume bench production and harness assembly operations. Since the crimp head can be rotated to any angle, the operator can also work on difficult terminations in confined equipment cabinets or enclosures. A complete system comprises a power unit, tool holder, crimp head adapter, and die set.

**Versatile.** As part of the SDE family of tools, the system accommodates dozens of interchangeable dies in an ever-expanding range, including those for open-barrel contacts and terminals. Many die sets have multiple cavities for crimping more than one wire or terminal size at the same time. Dies are available to crimp a wide variety of products in the 6-26 AWG [13-0.12 mm<sup>2</sup>] wire range.

**Powerfully Precise.** The crimping force is provided by a single power unit that can be hand held and actuated by a hand or foot switch. Tool holders with a ratchet feature are available to ensure a complete crimp cycle; simply depressing the hand or foot switch makes the dies fully bottom before you can open the jaws to release the crimped product. Now you have virtually the same complete crimp cycle control provided by the mechanical ratchet of premium CERTI-CRIMP hand tools, with much less operator effort.

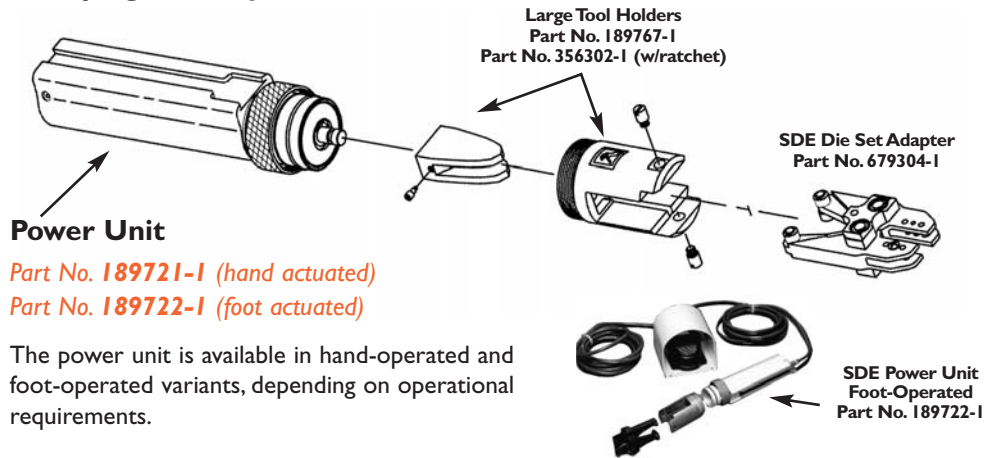
**Convenient.** The compact, lightweight power unit reduces operator fatigue, and fits into tight spaces in complex assemblies in the factory environment.

### Fast Facts

This pneumatic tool system can crimp a broad range of terminals, when either bench-mounted or hand-operated in cramped quarters.

- Lightweight tool that reduces fatigue
- Able to handle a wire range of 6-26 AWG [13-0.12 mm<sup>2</sup>], plus coaxial and fiber optic cable
- Over 100 interchangeable SDE die sets to crimp a broad range of connectors
- Operated by hand or foot switch
- Ratchet control available to provide complete crimp cycle—helps eliminate partial crimps
- Head assembly able to rotate to any angle
- Engineered and manufactured using processes independently certified to internationally recognized quality standards ISO-9001:2000 and Telecommunications Industry Standard TL 9000.

### Crimping Head System



### Specifications-Power Unit

Outside Diameter	45 [1.82]
Length	225 [8.88] (230 [9.00] for Part No. 189721-1)
Grip Span	55 [2.19] over button/handle
Weight	0.60 kg [1.32 lb] (0.72 kg [1.58 lb] for Part No. 189721-1)
Air Pressure	6.21-6.89 bar [90-100 psi]
Air Displacement	0.00018 m <sup>3</sup> [11.14 in <sup>3</sup> ]
Air Supply Hose	3.05 m long [10 ft], 4.8 [3/16] I.D. with 3.2 [1/8] NPT fitting
Cycle Time	0.7-0.8 s (for 16-14 AWG [1.3-2 mm <sup>2</sup> ] PIDG Terminals)



# Battery-Powered Crimp Tool Kit

## Completely Portable Power Crimping



This tool is a versatile, convenient crimper for factory or field use. It is ideally suited for R&D prototyping, networking applications, and commercial, industrial, and institutional maintenance work. As part of the SDE family, it is compatible with a broad range of crimp dies that are fully interchangeable among tools and tool platforms. The kit includes the tool, two batteries, and a charger.

**Versatile.** As an SDE tool, the system accommodates dozens of interchangeable dies in an ever-expanding range, including those for closed- and open-barrel contacts and terminals. Many die sets have multiple cavities for crimping more than one wire or terminal size. The tool can terminate wires up to and including 10 AWG [6 mm<sup>2</sup>].

**Convenient.** The tool operates with a pressure-sensitive cycle control. Including the lightweight battery pack, it weighs only 1.57 kg [3.46 lb] and is only 360 mm [14 in] long—an easy fit in any toolbox.

**Quality.** Every tool crimps with precision, incorporating the traditional quality of all AMP products.

### Fast Facts

This fast, ergonomically-designed tool is ideal for use at the bench, on the line, or in the field.

- Compatible with over 100 SDE dies
- Completely portable—over 100 crimps per charge, 40 min charging time
- Terminates wires to 10 AWG [6 mm<sup>2</sup>]
- Lightweight—1.57 kg [3.48 lbs] with battery; compact—360 mm [14 in] length
- Kit includes tool, 2 batteries, charger
- Pressure-sensitive cycle control
- Engineered and manufactured using processes independently certified to internationally recognized quality standards ISO-9001:2000 and Telecommunications Industry Standard TL 9000.

**Manual Wire Preparation** — A full selection of manual wire strippers complements this tool, providing a complete solution for convenient, correct wire termination.

### Standard Stripping Tools

#### Coax Stripper, 1490490-1

- 3 blades designed to strip RG-6, RG-58, RG-59 cable in one step
- Replaceable blade cartridges



#### Cyclops Cable Stripper, 1375317-1

- Outer sheath stripper
- Automatically adjusts to different cable thicknesses
- Works on cable diameters up to 11 mm [0.43 in]



#### Economy Wire Stripper and Cutter, 1490491-1

- Strips 10-24 AWG [5.26-0.2 mm<sup>2</sup>]
- Adjustable to any of 8 wire sizes



#### Rotary Cable Stripper, 606700-1

- Round cable tool can be used on single- or multiple-conductor cable up to 44.5 mm [1.75 in]



#### Automatic Wire Stripper, 734185-1

- Strips PVC, THHN, and THHW
- Adjustable wire stop
- Built-in cutter
- Strips 10-28 AWG [5.26-0.09 mm<sup>2</sup>]



### Premium Stripping Tools

#### Cable Stripping Tool, 2-1579002-4 Spare Blade, 7-1579005-4

- Fine adjustability and repeatability assured by 9-position adjustment wheel
- Flexible: Strips the sheath from most multicore and fiber optic cables up to 11 mm/0.43" in diameter
- Tough: New impact resistant nylon



#### Rotary Cable Stripping Tool, 2-157900-5, Spare Blade 2-157900-5,

- End strip (circular + straight + spiral)
- Window strip (circular + spiral + circular strip)
- 4,5-40mm [0.18" - 1.57"] diameter
- Interchangeable cable guide hooks



#### Automatic Wire Stripper

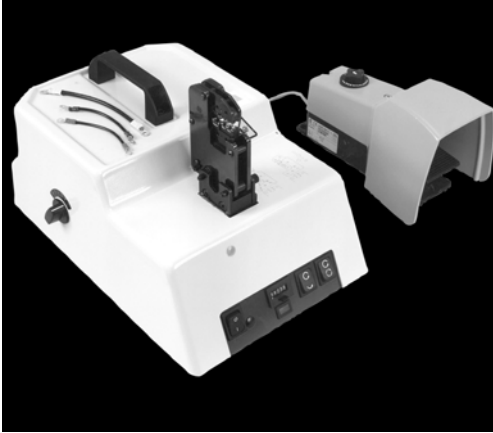
- Easy change stripping blade cassettes
- Cuts and strips up to 10mm<sup>2</sup> / 34-8 AWG
- Strips PVC, THHN, THHW and TEFLON



Tool	Description
2-1579002-1	Std. Ver. 0.02-10mm <sup>2</sup> [34-8 AWG] - Parallel blade Spare Blade 7-1579005-1
2-1579002-2	Teflon Ver. 0.02-4.0mm <sup>2</sup> [28-12 AWG] - V-blade Spare Blade 7-1579005-2
2-1579002-3	Version 16mm <sup>2</sup> [6 AWG] - Form blade Spare Blade 7-1579005-3

# SDE Electric Terminator

## Benchtop Power Crimping



### Fast Facts

This convenient, powerful terminator is a dependable asset for small-scale bench production or wire harness assembly.

- Compatible with over 100 SDE dies
- Terminates wires to 10 AWG [6 mm<sup>2</sup>]
- Small footprint—390 x 260 x 200 mm [15.5 x 10 x 8 in]; lightweight—13 kg [29 lb]
- Foot actuated, with jog cycle
- Crimp jaws normally closed
- Power requirement: 110/120V or 220/240V; 0.7 KVA
- Engineered and manufactured using processes independently certified to internationally recognized quality standards ISO-9001:2000 and Telecommunications Industry Standard TL 9000.

### SDE Electric Terminator, Part No. 1490076-2

The SDE Electric Terminator offers excellent price to performance ratio in a compact benchtop unit with the features normally found on more expensive models. It is ideally suited for low to medium volume bench production and harness assembly. As part of the SDE family, it is compatible with a broad range of crimp dies that are fully interchangeable among tools and tool platforms.

**Versatile.** As an SDE tool, the system accommodates dozens of interchangeable dies in an ever-expanding range, including those for open-barrel contacts and terminals. Many die sets have multiple cavities for crimping more than one wire or terminal size. The tool can terminate wires up to and including 10 AWG [6 mm<sup>2</sup>]. A switch to “Variable” operation allows operation in double step mode: first step to advance and hold the contact, second step to crimp and then return to the starting position.

**Convenient.** A completely logical, simple arrangement of control switches and connections provides easy setup and requires only minimal operator training. Operator safety is enhanced by a safety reverse switch and safety lock foot pedal. In addition, crimp jaws are normally closed. The sprung shut jaws grip the terminal prior to wire insertion, to ensure precise positioning. A cycle counter tracks operation, for maintenance planning.

**Quality.** Every SDE Terminator crimps with precision, incorporating the traditional quality of all AMP products.



A copy of the certificate is available upon request.

©2004 by Tyco Electronics Corporation.  
All Rights Reserved. AMP and TYCO are trademarks.

### Wire Preparation

A full selection of wire strippers complements this tool, providing a complete solution for convenient, correct wire termination.

### Delta 50 Semi-Automatic Stripper, Part No. 1-528367-3

- Strips 30-14 AWG [0.05 mm<sup>2</sup>-2 mm<sup>2</sup>], with cross section range continuously adjustable without blade change
- Electrically powered



### Delta 60 Semi-Automatic Stripper, Part No. 1-528367-0

- Strips 20-2 AWG [0.5 mm<sup>2</sup>-35 mm<sup>2</sup>], single or multiple pole conductors
- Electrically powered, with continuously adjustable head rotation rate



### Coax Stripper, Part No. 1490490-1

- 3 blades designed to strip RG-6, RG-58, RG-59 cable in one step
- Replaceable blade cartridges



### Automatic Wire Stripper, Part No. 734185-1

- Strips PVC, THHN, and THHW
- Adjustable wire stop
- Built-in cutter
- Strips 10-28 AWG [5.26-0.09 mm<sup>2</sup>]



**tyco**  
Electronics

**AMP**

Need More Information?

For information about tooling, call 1-800-522-6752 or e-mail [toolsales@tycoelectronics.com](mailto:toolsales@tycoelectronics.com).

For drawings or technical data, contact your Tyco Electronics sales engineer or call the Technical Support Center: 1-800-522-6752. Dimensions are in millimeters unless specified otherwise. Values in brackets are English equivalents unless specified otherwise. Specifications subject to change. Consult Tyco Electronics for latest specifications.