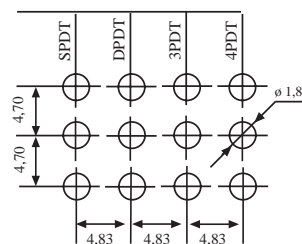
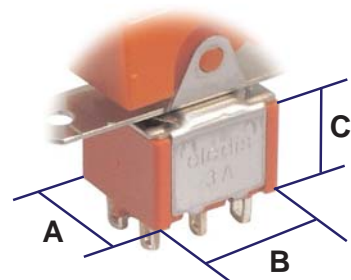


SERIES 3A

Miniature rocker

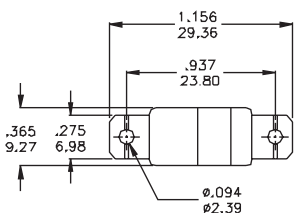
NUMBER OF POLES / DIMENSIONS

		A	B	C
1 SPDT	2 Comm. 1 / 3 •	6,86 mm	9,56 mm	12,70 mm
2 DPDT	2 Comm. 5 Comm. 1 / 3 • 4 / 6 •	11,43 mm	12,70 mm	8,89 mm
3 3PDT	2 Comm. 5 Comm. 8 Comm. 1 / 3 • 4 / 6 • 7 / 9 •	16,51 mm	12,70 mm	10,54 mm
4 4PDT	2 Comm. 5 Comm. 8 Comm. 11 Comm. 1 / 3 • 4 / 6 • 7 / 9 • 10 / 12 •	21,59 mm	12,70 mm	10,54 mm

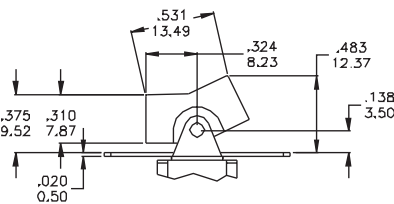


ACTUATORS

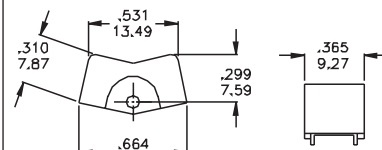
B1 - ROCKER



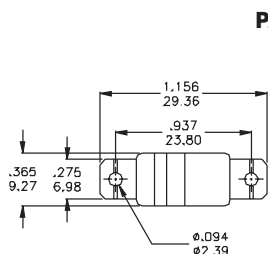
PANEL MOUNT



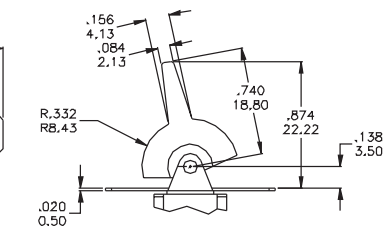
P.C. MOUNT



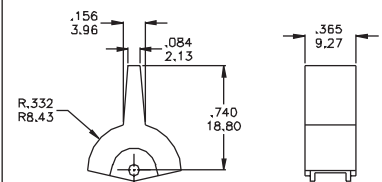
P1 - PADDLE



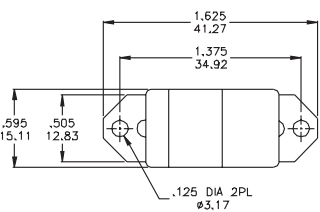
PANEL MOUNT



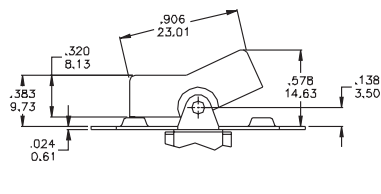
P.C. MOUNT



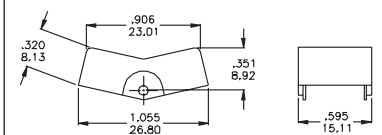
B2 - ROCKER



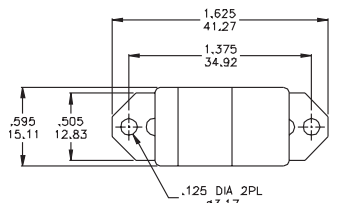
PANEL MOUNT



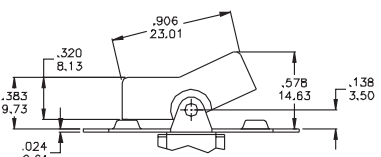
P.C. MOUNT



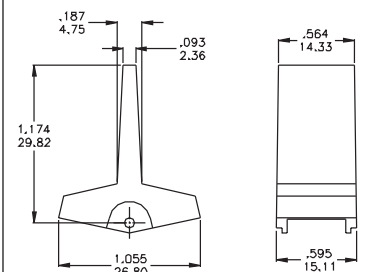
P2 - PADDLE



PANEL MOUNT



P.C. MOUNT

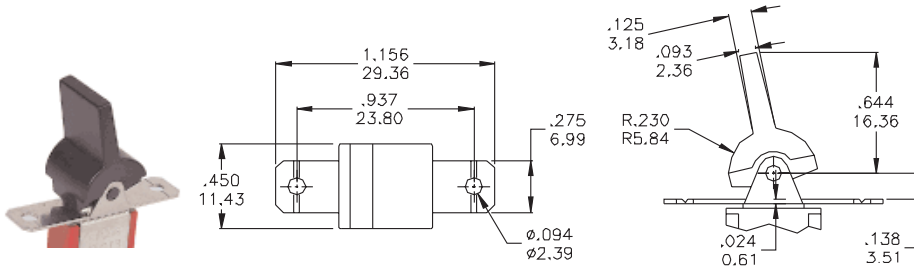


SERIES 3A

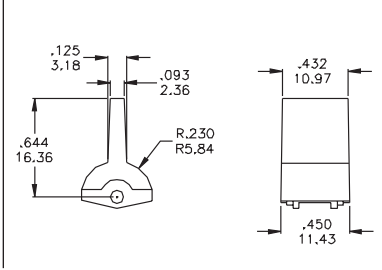
Miniature rocker

ACTUATORS

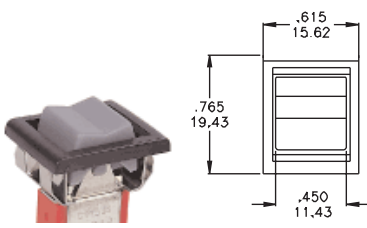
PANEL MOUNT



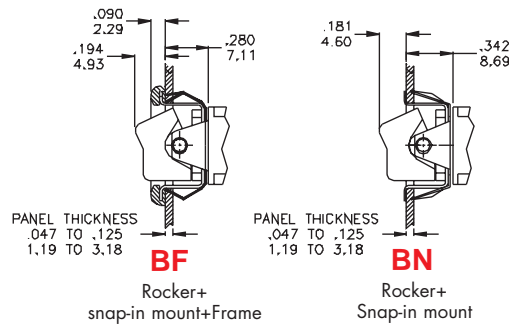
P.C. MOUNT



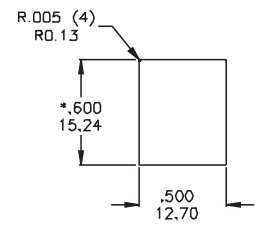
BF - BN



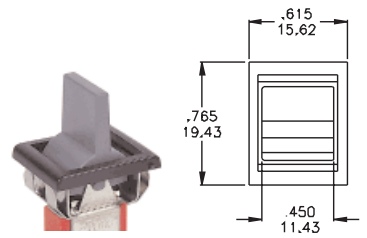
FRONT PANEL MOUNT SNAP-IN



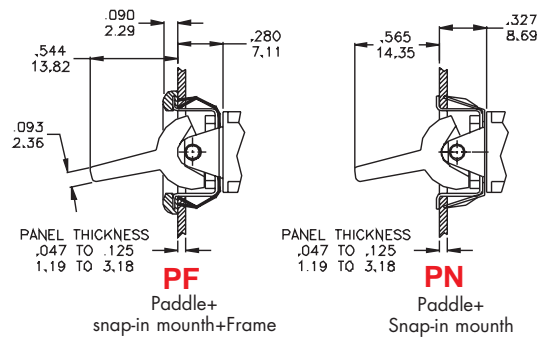
PANNEL CUT OUT



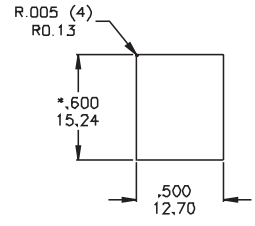
PF - PN



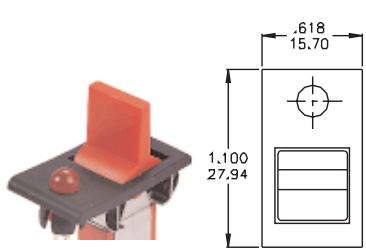
FRONT PANEL MOUNT SNAP-IN



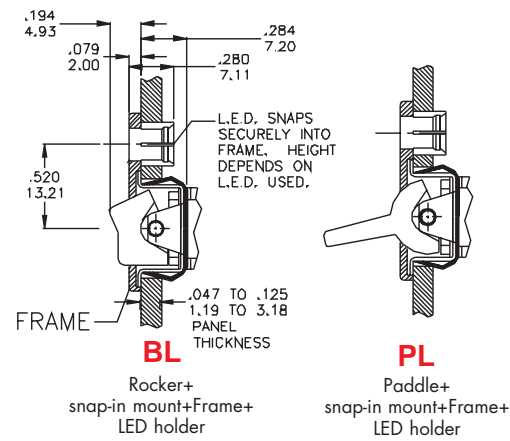
PANNEL CUT OUT



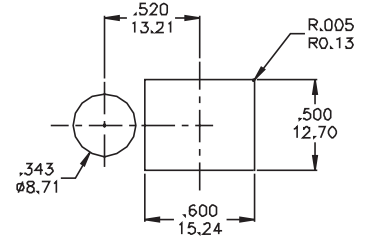
BL - PL



FRONT PANEL MOUNT SNAP-IN



PANNEL CUT OUT



SERIES 3A

Miniature rocker

ACTUATORS

JX

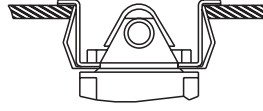


Part Numbers

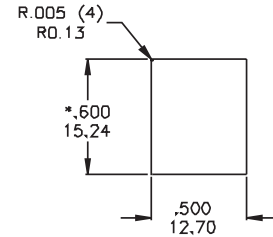
Rocker+ Frame: **3ARF** - Colour

Paddle+ Frame: **3APF** - Colour

FRONT PANEL MOUNT SNAP-IN

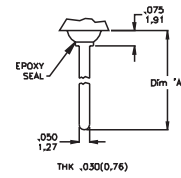
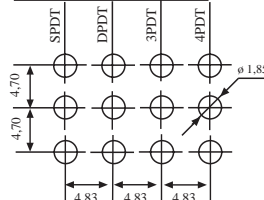
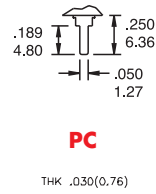
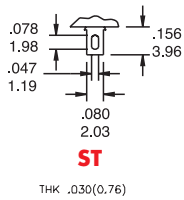


PANNEL CUT OUT

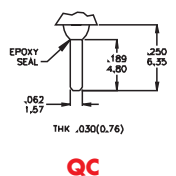
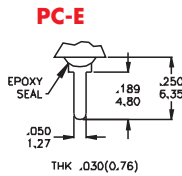
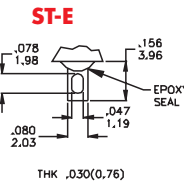


Note: **JX** indicates a switch ordered without rocker or paddle and frame.
For max flexibility of usage switches can be assembled in production. Rocker/paddle and frame must be ordered separately.

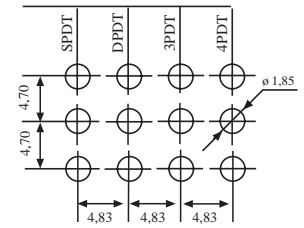
TERMINATIONS



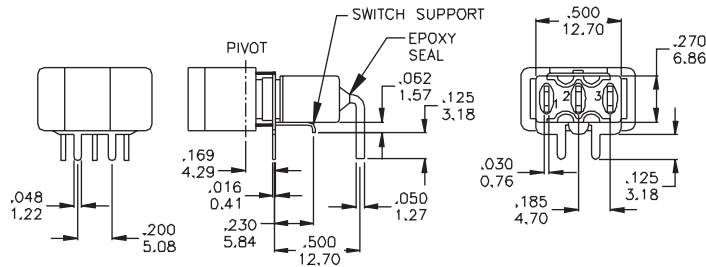
Dim. A	
W1	.736 (18.70)
W2	.953 (24.20)
W3	.425 (10.08)
W4	1.062 (26.97)



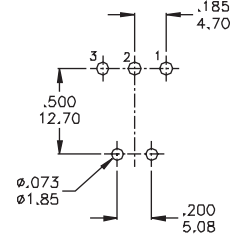
W



H9
SPDT



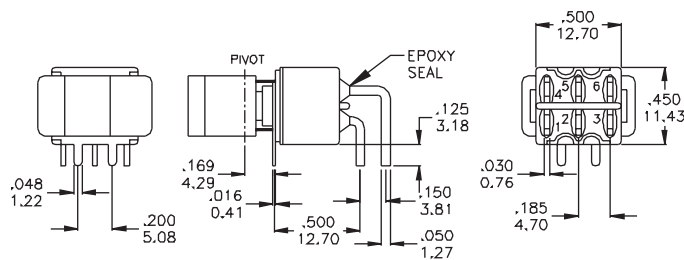
P.C. LAYOUT



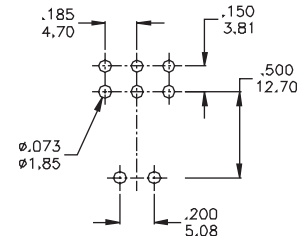
Available only with B1 Rocker

Part N° shown: 3A11-B1H9AE2

H9
DPDT



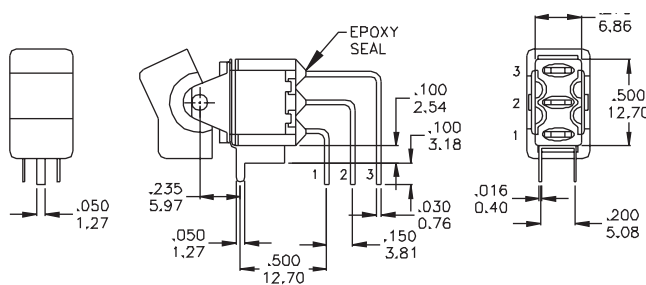
P.C. LAYOUT



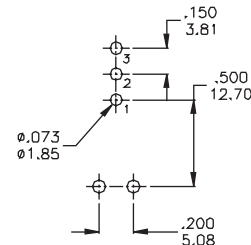
Available only with B1 Rocker or P1 Paddle

Part N° shown: 3A21-B1H9AE2

V9
SPDT



P.C. LAYOUT



Available only with B1 Rocker or P1 Paddle

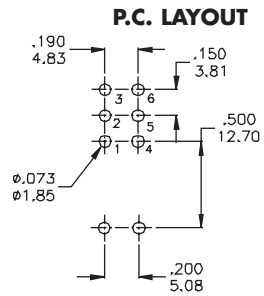
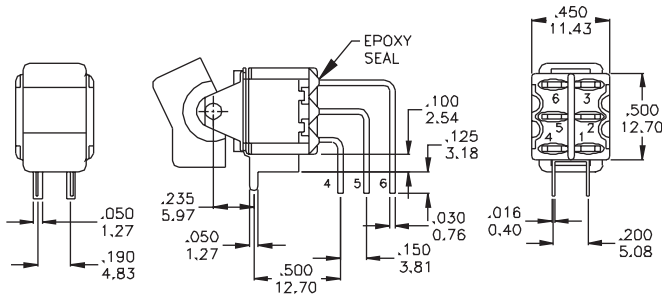
Part N° shown: 3A11-B1V9AE2

SERIES 3A

Miniature rocker

TERMINATIONS

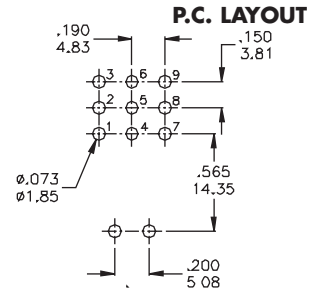
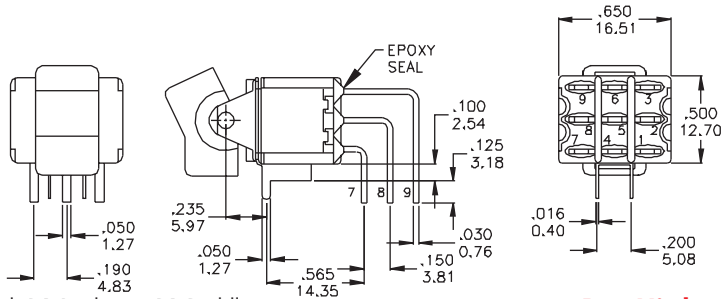
V9
DPDT



Available only with B1 Rocker or P1 Paddle

Part N° shown: **3A21-B1V9AE2**

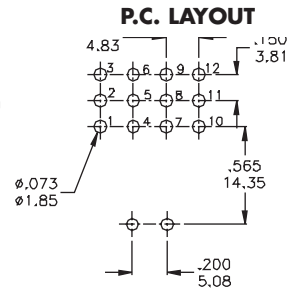
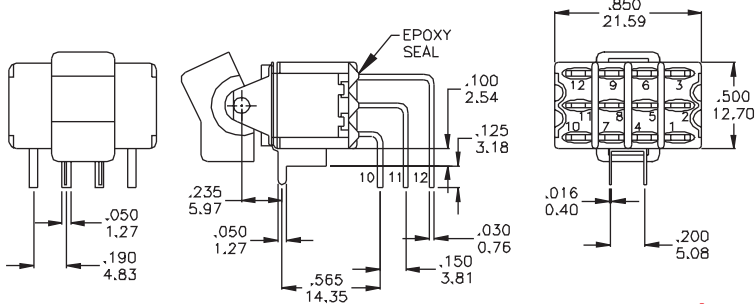
V9
3PDT



Available only with B1 Rocker or P1 Paddle

Part N° shown: **3A31-B1V9AE2**

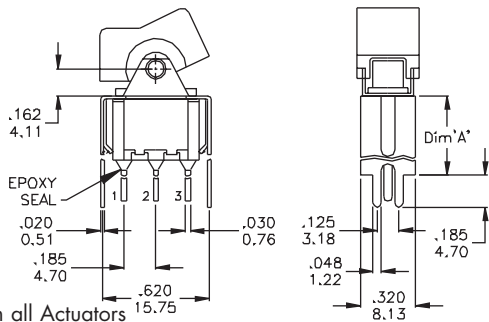
V9
4PDT



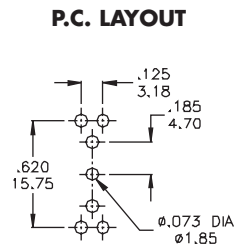
Available only with B1 Rocker or P1 Paddle

Part N° shown: **3A41-B1V9AE2**

U2
U3
SPDT



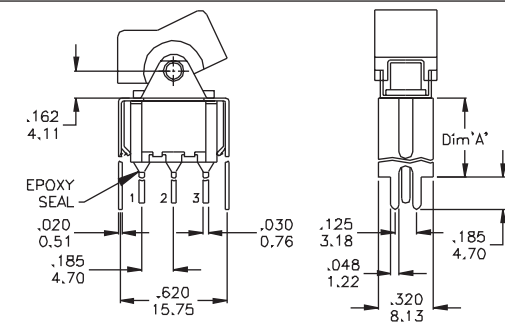
Dim. A	
U2	.460 (11.68)
U3	.630 (16.00)



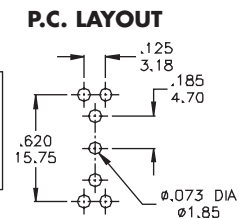
Available with all Actuators

Part N° shown: **3A11-B1U_AE2**

U2
U3
DPDT



Dim. A	
U2	.460 (11.68)
U3	.630 (16.00)



Available with all Actuators

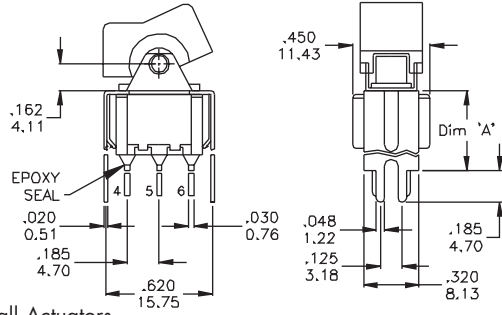
Part N° shown: **3A21-B1U_AE2**

SERIES 3A

Miniature rocker

TERMINATIONS

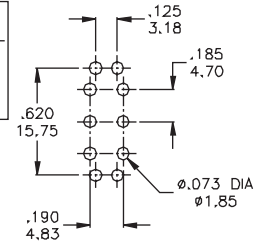
U4
U5
SPDT



Available with all Actuators

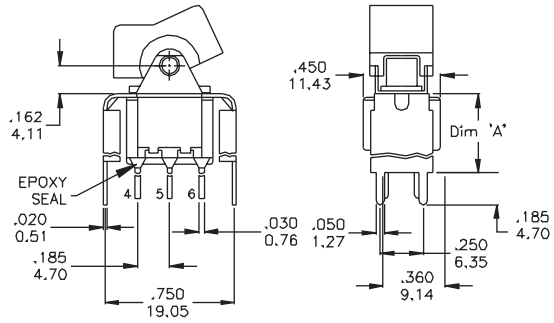
Dim. A	
U4	.460 (11.68)
U5	.630 (16.00)

P.C. LAYOUT



Part N° shown: **3A11-B1U_AE2**

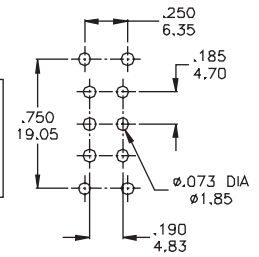
U4
U5
DPDT



Available with all Actuators

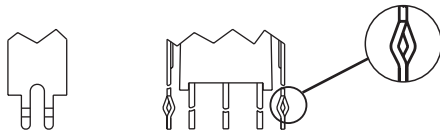
Dim. A	
U4	.460 (11.68)
U5	.630 (16.00)

P.C. LAYOUT

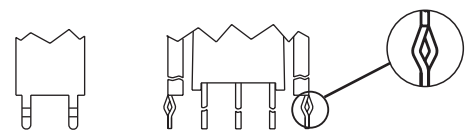


Part N° shown: **3A21-B1U_AE2**

U2S
U3S



U4S
U5S



Available with all Actuators. **U2S U3S U4S U5S** have the same P.C mounting but with snap-in bracket

SERIES 3A

Miniature rocker

CONTACT MATERIALS - CONTACT RATINGS

- S** **Moving Contacts:** coin silver
Terminals: copper alloy, silver plated
Rating: 2 Amps with resistive load @ 250 VAC
5 Amps with resistive load @ 125 VAC or 28 VDC
- A** **Moving Contacts:** copper alloy with gold plating over nickel plating
Terminals: copper alloy with gold plating over nickel plating
Rating: 0.4 Volts/Amps max @ 20 Volts max (AC or DC)
- G** **Moving Contacts:** gold plating over silver
End Terminals: gold plating over silver
Center Terminals: gold plating over copper alloy, silver plated
Note: **G** option used for either "high" (2 Amps @ 250 VAC) or "low" (0.4 Volts/Amps max) contact rating (one exclude the other)
- T** **Moving Contacts:** silver plated copper alloy
Terminals: copper alloy with gold plating over nickel plating
Rating: 5Amps with resistant load @ 120VAC or 28VDC
2Amps with resistant load @ 250VAC
- K** **Moving Contacts:** copper alloy with gold plating over nickel plating
Terminals: gold plating over silver
Rating: 0.4 Volts/Amps max @ 20 Volts max (AC or DC)
- V** **Moving Contacts:** silver plated copper alloy
Terminals: silver plated copper alloy
Rating: 5Amps with resistant load @ 120VAC or 28VDC
2Amps with resistant load @ 250VAC

SEALING



E

COLOUR OPTIONS

- 1 White**
- 2 Black**
- 3 Red**
- 4 Orange**
- 5 Yellow**
- 6 Green**
- 7 Blue**
- 8 Brown**
- 9 Gray**