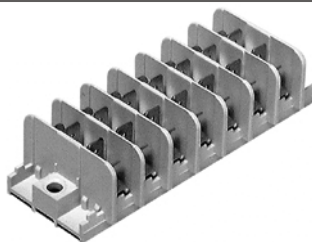








PA32

Barrier Terminal block



TECHNICAL DATA

	IEC Standards	American Standards	
Dimensions mm (inches)	A	30 + 11 x nr. Poles – 1	(1.18" + 0.43" x nr. Poles – 1)
	B	11 x nr. Poles + 1	(0.43" x nr. Poles + 1)
	C	37 (1.46")	
	D	24 (0.94")	
	E	Ø 4.5 (0.18")	
Versions	1 + 16 poles		
Ratings	450V – 20A (TAB) 24A (screw)	300V – 20A	
Wire size	2.5 sqmm	22 + 10 AWG	
Working Temperature	- 5 + 85°C (short time 115°C)	23 + 221°F	
Plastic Material	PPOm grey colour, UL94 V1, GWT 850°C		
Metal Parts	Male tab contacts, 2 x 2.8 (0.11") x 0.8 (0.03") / 4.8 (0.19") x 0.8 / 6.3 (0.25") x 0.8, made in nichel plated brass; Shunt link made in nichel plated brass; other parts made in zinc plated steel		
Accessories	PA 262		

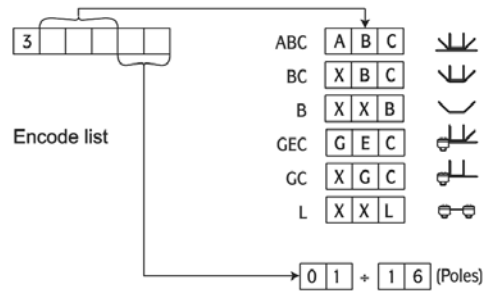
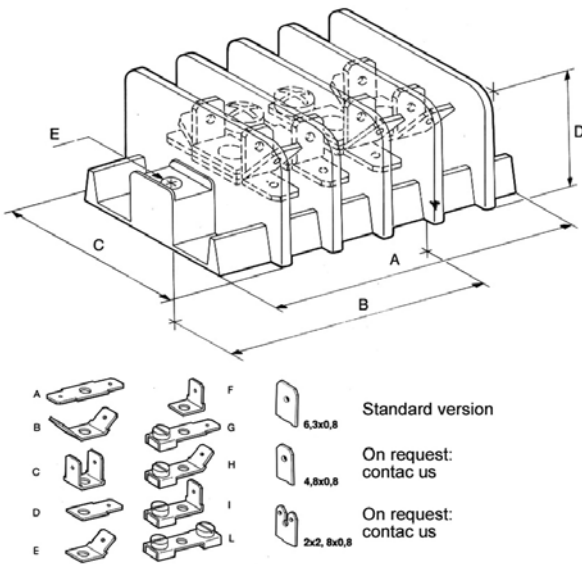
Approvals	File Nr.	Ratings (sqmm/AWG – V – A – T)	Standard References
	E 3762	2.5 sqmm - 450V – 85°C	EN 60998-1; EN 60998-2-1; EN 61210
	40000667	2.5 sqmm - 450V – 24A (screw) / 20A (tab) – 85°C	DIN EN 60998-1; DIN EN 60998-2-1; DIN EN 60998-1/A1; DIN EN 61210 (VDE 0613)
	E76048 vol. 1 sec. 3	22 + 10 AWG - 300V - 20A - 105 °C	UL 1059; CSA C22-2 N.158-1987
	LR 40455	22 + 12 AWG - 600V - 20A	CSA C22-2 N.158-1987; E.C.N 584B





PA32

DIMENSIONAL
DRAWING



PACKAGING				
Type	P-N	Pack.	Dim. Pack. (LxHxP)	Weight (Kg)
PA 32 ABC	3ABC01+16	(1)	(2)	(3)
PA 32 XXB	3XXB01+16	(1)	(2)	(3)
PA 32 XBC	3XBC01+16	(1)	(2)	(3)
PA 32 XGC	3XGC01+16	(1)	(2)	(3)
PA 32 GEC	3GEC01+16	(1)	(2)	(3)
PA 32 XXL	3XXL01+16	(1)	(2)	(3)

(1) On request.

(2) As per pole numbers.

(3) Weight relative to the heaviest version.

