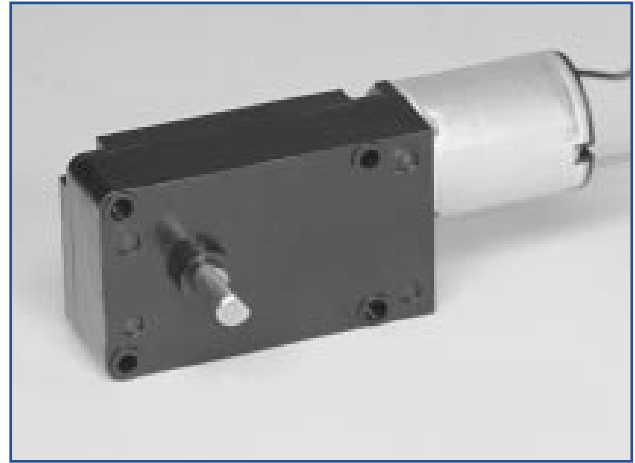


# DC-motor med snäckväxel

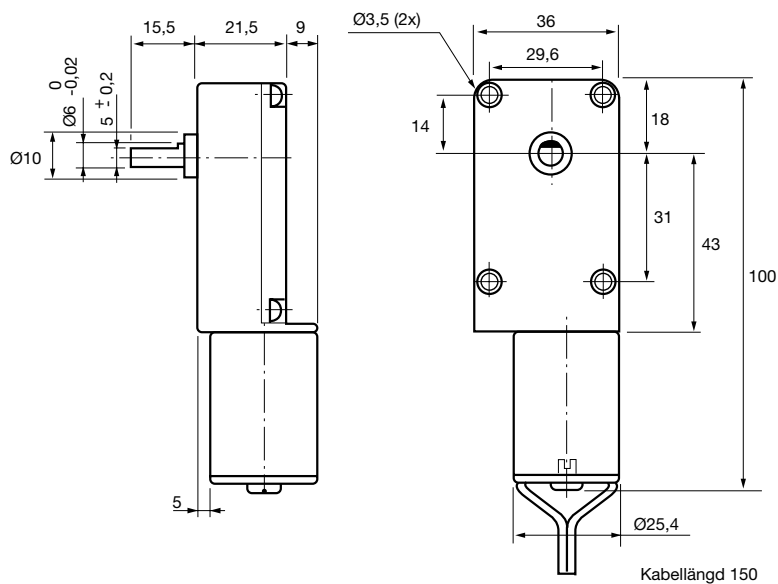
## PM-motor fabrikat Japan Servo, DME25BA-003

- Spänning 12 och 24 V DC.
- Variabel drivspänning medger varvtalsreglering.
- Motorn är reversibel genom polvändning.
- Angivna data gäller vid korttidsdrift S3-50% (10 min).
- Varvalsreglering, se nedan.



## Motor/växel - data och beställningsnummer

Best. nr	Typ	Spänning V	Uteffekt W	Varvtal min <sup>-1</sup>	Moment Ncm	Ström mA	Startmoment Ncm	Utväxling	Vikt g
45-155-1000	DME25BA-005	12	1,6	81	20	560	105	78,9:1	91
45-155-1010	DME25BA-003	24				280			



## Drivkort - 1-kvadrant

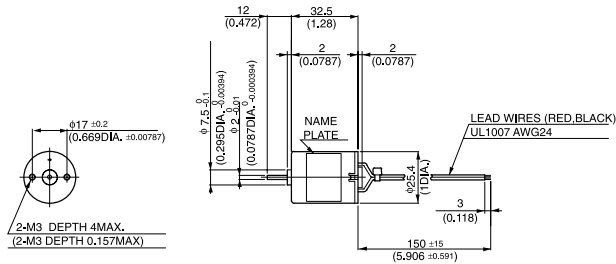
Best. nr	Typ	Matnings-spänning	Max ström	Se sid
45-110-9010	SMD 1DD	10-30VDC	$I_n=1A, I_{start}=2 \times I_n$	192

# DME25

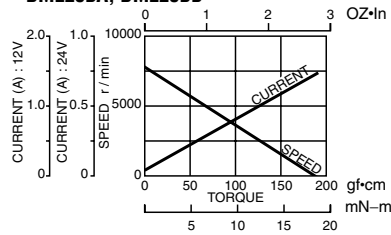
MODEL CODE	VOLTAGE	OUTPUT	CURRENT
BA	12V	3W	0.47A
BB	24V	3W	0.23A



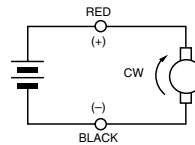
## ● DIMENSIONS Unit mm(inch) DME25BA, DME25BB



## ● CURRENT, SPEED-TORQUE CURVE DME25BA, DME25BB



## ● CONNECTION



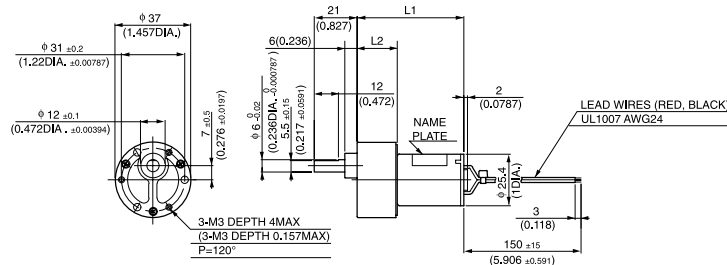
## ● STANDARD SPECIFICATIONS

Model	Rated					No load		Stall torque		Weight		
	Output W	Voltage V	Torque		Current A	Speed r/min	Current A	Speed r/min	mN-m	oz-in	Weight	
			mN-m	oz-in							g	lb
DME25BA	3	12	4.9	0.69	0.47	5800	0.07	8000	17.7	2.50	55	0.12
DME25BB	3	24	4.9	0.69	0.23	5800	0.04	8000	17.7	2.50	55	0.12

## WITH GEARBOX 36G

Gear heads for  
intermittent drive

## ● DIMENSIONS Unit mm(inch) DME25B36G



GEAR RATIO	L1		L2		WEIGHT	
	(mm)	(inch)	(mm)	(inch)	g	lb
10	52.3	2.059	19.8	0.78	160	0.35
20~30	54.8	2.157	22.3	0.878		
50~100	57.3	2.256	24.8	0.976		
120~300	59.8	2.354	27.3	1.075	180	0.40
400~600	62.3	2.453	29.8	1.173		

## ● with 36G TYPE GEARBOX

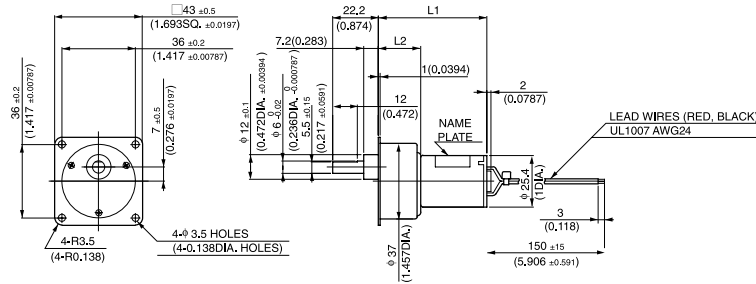
Model	Gear ratio		10	*18	*20	*30	50	60	75	100	*120	*150	*180
	Rated speed	r/min	580	322	290	193	116	96.6	77.3	58	48.3	40.1	35.2
DME25B36G <input type="checkbox"/> ☆	Rated torque	N-m	0.04	0.064	0.071	0.1	0.15	0.18	0.23	0.32	0.34	0.39	0.39
		oz-in	5.55	9.03	10.14	15.28	22.22	26.39	33.33	45.83	48.61	55.55	55.55
Model	Gear ratio		*200	*250	*300	400	500	600					
	Rated speed	r/min	32.5	27.2	23.3	17.9	14.6	12.4					
DME25B36G <input type="checkbox"/> ☆	Rated torque	N-m	0.39	0.39	0.39	0.39	0.39	0.39					
		oz-in	55.55	55.55	55.55	55.55	55.55	55.55					

NOTES 1: On models marked with asterisks (\*), the direction of the gearbox shaft rotation is in reverse of the motor rotation direction.  
2: In notation model number : fill the reduction ratio denominator in the position marked with the box sign  ; fill the voltage in the position marked with the star sign ☆.

# WITH GEARBOX 43G

Gear heads for  
intermittent drive

## ● DIMENSIONS Unit mm(inch) DME25B43G



GEAR RATIO	L1		L2		WEIGHT	
	(mm)	(inch)	(mm)	(inch)	g	lb
10-30	53.3	2.098	20.8	0.819	160	0.35
50-300	58.3	2.295	25.8	1.016		

## ● with 43G TYPE GEARBOX

Model	Gear ratio		10	*18	*20	*30	50	60	75	100	*120	*150
	Rated speed	r/min	580	322	290	193	116	96.6	77.3	58	48.3	40.1
DME25B43G □ ☆	Rated torque	N-m	0.04	0.06	0.07	0.1	0.16	0.18	0.23	0.32	0.34	0.39
		oz-in	5.55	9.03	10.14	15.28	22.22	26.39	33.33	45.83	48.61	55.55

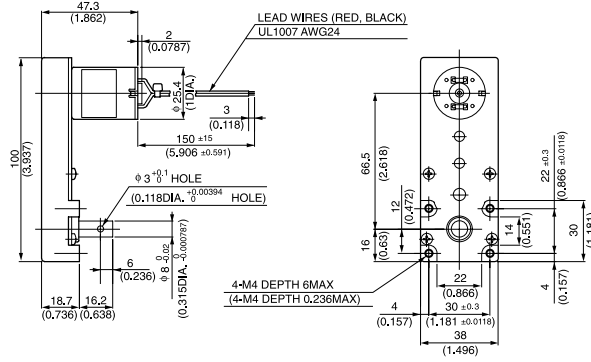
Model	Gear ratio		*180	*200	*250	*300
	Rated speed	r/min	35.2	32.5	27.2	23.3
DME25B43G □ ☆	Rated torque	N-m	0.39	0.39	0.39	0.39
		oz-in	55.55	55.55	55.55	55.55

# WITH GEARBOX L

Gear heads for  
intermittent drive



## ● DIMENSIONS Unit mm(inch) DME25BL



(WEIGHT 225 g 0.5 lb)

## ● with L TYPE GEARBOX

Model	Gear ratio		30	50	120	150	200	255
	Rated speed	r/min	193	116	48.3	38.6	29	22.7
DME25BL □ ☆	Rated torque	N-m	0.09	0.14	0.34	0.43	0.58	0.74
		oz-in	12.22	19.44	48.61	61.10	81.93	104.15

NOTES 1: On models marked with asterisks (\*), the direction of the gearbox shaft rotation is in reverse of the motor rotation direction.  
2: In notation model number : fill the reduction ratio denominator in the position marked with the box sign □ ; fill the voltage in the position marked with the star sign ☆.

# DME25

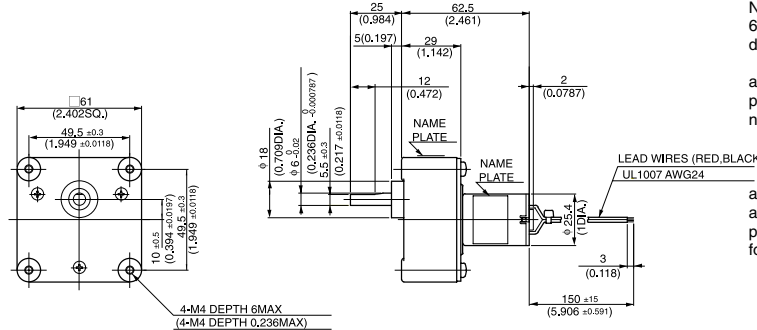
MODEL CODE	VOLTAGE	OUTPUT	CURRENT
BA	12V	3W	0.47A
BB	24V	3W	0.23A

## WITH GEARBOX 6DG



6DG

### ●DIMENSIONS Unit mm(inch) DME25B6DG



**NOTE:**

6DG gearboxes are available for either 4.5mm diameter mounting holes or M4 x 6mm tapped holes. 4.5mm diameter mounting holes type gearboxes are available as stock components. When ordering, please write the motor model and gearbox model numbers separately, as in the following example:  
Pinion Shaft Motor + Gearbox  
**DME25B6HPB + 6DG**  
M4 x 6mm tapped mounting hole type gearboxes are available only on demand, and are supplied only as combined unit with motors. When ordering, please write model number as a single unit, as in the following example: **DME25B6H\_B**

A standard gear head (sold separately) has four holes of 4.5mm (0.177inch) diameter and attached with four bolts of M4 x 45mm. (M4 x 1.77inch) (WEIGHT 355 g 0.78 lb)

### ●with 6DG TYPE GEARBOX MOTOR MODEL DME25B6HP☆ & GEARBOX MODEL 6DG□

Model	Gear ratio		5	12.5	15	*25	*30	*50	*75	*100	150	180	250
		Rated speed	r/min	1160	464	386	232	193	116	77.3	58	38.6	32.2
DME25B6HP□☆ &6DG□	Rated torque	N·m	0.02	0.05	0.06	0.1	0.11	0.18	0.27	0.36	0.49	0.59	0.82
		oz·in	2.78	6.94	8.33	12.64	15.28	25.00	37.50	49.99	68.05	81.93	113.87
Model	Gear ratio		300	450	*500	*750	*900	*1800					
	Rated speed	r/min	19.3	14.4	13	9.3	7.9	4.2					
DME25B6HP□☆ &6DG□	Rated torque	N·m	0.96	0.98	0.98	0.98	0.98	0.98					
		oz·in	136.09	138.87	138.87	138.87	138.87	138.87					

NOTES 1: On models marked with asterisks (\*), the direction of the gearbox shaft rotation is in reverse of the motor rotation direction.  
2: In notation model number : fill the reduction ratio denominator in the position marked with the box sign □ ; fill the voltage in the position marked with the star sign ☆.

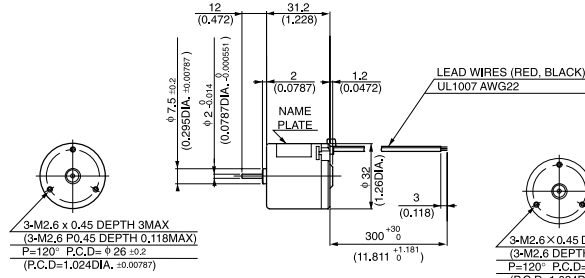
# DME33

MODEL CODE	VOLTAGE	OUTPUT	CURRENT
SA	12V	0.7W	0.12A
SB	24V	0.7W	0.06A
BA	12V	3.0W	0.42A
BB	24V	3.0W	0.22A

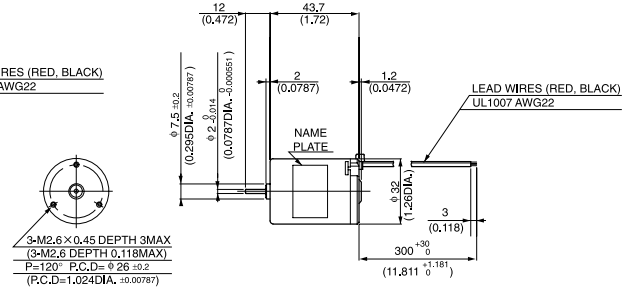


## ● DIMENSIONS Unit mm(inch)

### DME33SA, DME33SB

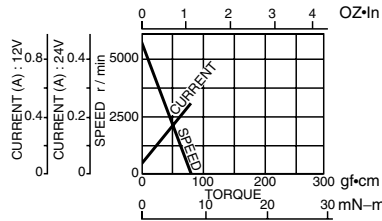


### DME33BA, DME33BB

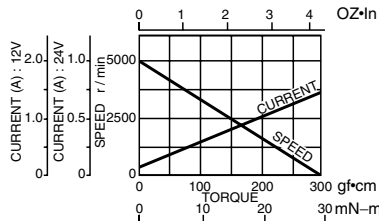


## ● CURRENT, SPEED-TORQUE CURVE

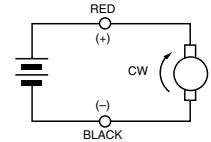
### DME33SA, DME33SB



### DME33BA, DME33BB



## ● CONNECTION

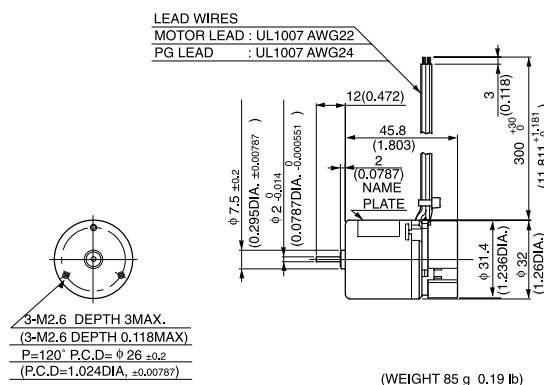


## ● STANDARD SPECIFICATIONS

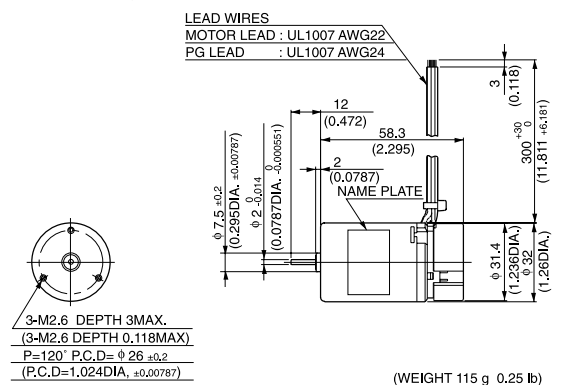
Model	Rated					No load		Stall torque		Weight		
	Output	Voltage	Torque		Current	Speed	Current	Speed	mN-m	oz-in	g	lb
	W	V	mN-m	oz-in	A	r/min	A	r/min				
DME33SA	0.7	12	1.5	0.21	0.12	4500	0.05	5500	7.8	1.11	70	0.15
DME33SB	0.7	24	1.5	0.21	0.06	4500	0.02	5500	7.8	1.11	70	0.15
DME33BA	3	12	7.8	1.11	0.42	3700	0.06	5000	29	4.17	100	0.22
DME33BB	3	24	7.8	1.11	0.22	3700	0.04	5000	29	4.17	100	0.22

## ● REVOLUTION SENSOR MAGNET TYPE

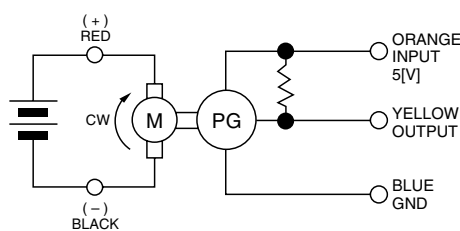
### DME33SMA, DME33SMB



### DME33BMA, DME33BMB



## ● CONNECTION OF REVOLUTION SENSOR



## ● SPECIFICATION OF REVOLUTION SENSOR SHOWN ON PAGE 4.

# DME33

WITH GEARBOX  
**36G**

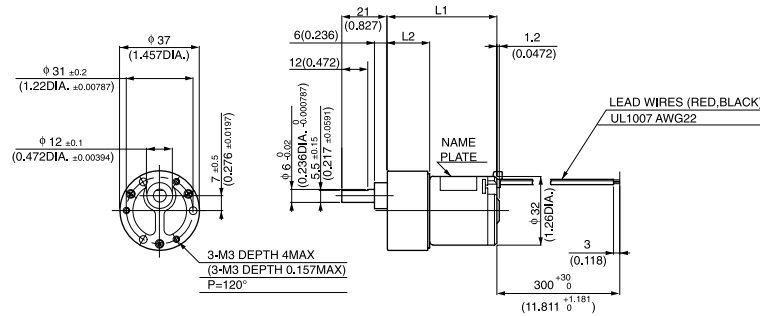
Gear heads for  
intermittent drive



**36G**

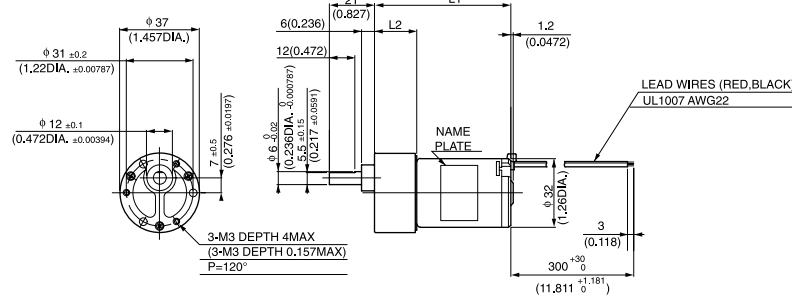
MODEL CODE	VOLTAGE	OUTPUT	CURRENT
SA	12V	0.7W	0.12A
SB	24V	0.7W	0.06A
BA	12V	3.0W	0.42A
BB	24V	3.0W	0.22A

● DIMENSIONS Unit mm(inch)  
**DME33S36G**



GEAR RATIO	L1		L2		WEIGHT	
	(mm)	(inch)	(mm)	(inch)	g	lb
10	52.0	2.047	19.8	0.78	170	0.37
20~30	53.5	2.106	22.3	0.878		
50~100	56.0	2.204	24.8	0.976		
120~300	58.5	2.303	27.3	1.075	190	0.42
400~600	61.0	2.402	29.8	1.173		

**DME33B36G**



GEAR RATIO	L1		L2		WEIGHT	
	(mm)	(inch)	(mm)	(inch)	g	lb
10	63.5	2.5	19.8	0.78	200	0.44
20~30	66.0	2.598	22.3	0.878		
50~100	68.5	2.697	24.8	0.976		
120~300	71.0	2.795	27.3	1.075	220	0.49
400~600	73.5	2.894	29.8	1.173		

● with 36G TYPE GEARBOX

Model	Gear ratio		10	*18	*20	30	50	60	75	100	*120	*150	*180
	Rated speed	r/min	450	250	225	150	90	75	60	45	37.5	30	25
DME33S36G <input type="checkbox"/> ☆	Rated torque	N·m	0.011	0.018	0.021	0.032	0.048	0.052	0.072	0.096	0.098	0.12	0.15
		oz·in	1.67	2.64	3.06	4.58	6.80	8.19	10.28	13.61	13.89	18.05	22.22
DME33B36G <input type="checkbox"/> ☆	Rated speed	r/min	370	205	185	123	74	61.6	49.3	40	34	28.4	24.4
		Rated torque	N·m	0.064	0.1	0.11	0.16	0.25	0.3	0.38	0.39	0.39	0.39
	Rated torque	oz·in	9.03	13.89	15.28	23.61	36.11	43.05	54.16	55.55	55.55	55.55	55.55
Model	Gear ratio		*200	*250	*300	400	500	600					
	Rated speed	r/min	22.5	18	15	11.2	9	7.7					
DME33S36G <input type="checkbox"/> ☆	Rated torque	N·m	0.16	0.21	0.25	0.31	0.39	0.39					
		oz·in	23.61	30.55	36.11	44.44	55.55	55.55					
DME33B36G <input type="checkbox"/> ☆	Rated speed	r/min	22.2	18.2	15.4	11.7	9.5	8					
		Rated torque	N·m	0.39	0.39	0.39	0.39	0.39	0.39				
	Rated torque	oz·in	55.55	55.55	55.55	55.55	55.55	55.55					

NOTES 1: On models marked with asterisks (\*), the direction of the gearbox shaft rotation is in reverse of the motor rotation direction.  
2: In notation model number : fill the reduction ratio denominator in the position marked with the box sign ; fill the voltage in the position marked with the star sign ☆.

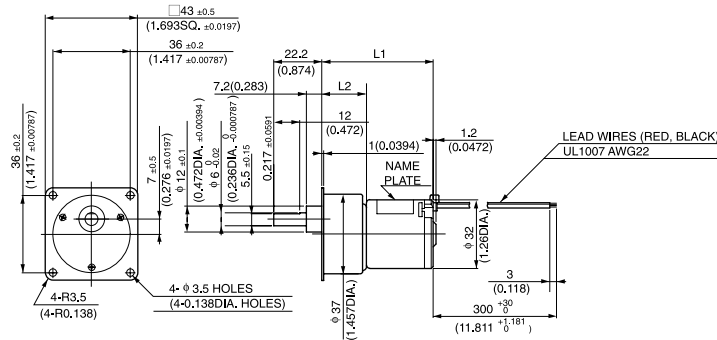
WITH GEARBOX  
**43G**

Gear heads for  
intermittent drive



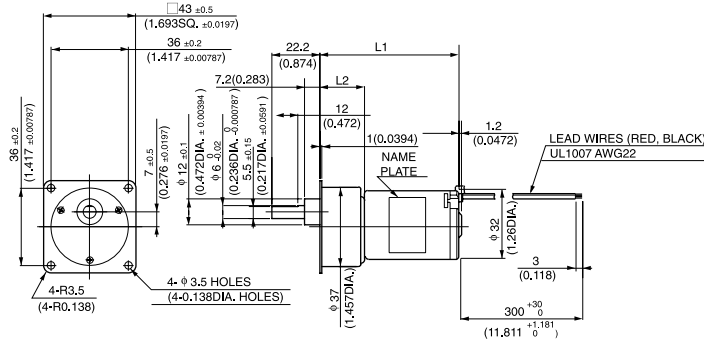
43G

● DIMENSIONS Unit mm(inch)  
**DME33S43G**



GEAR RATIO	L1		L2		WEIGHT	
	(mm)	(inch)	(mm)	(inch)	g	lb
10-30	52	2.047	20.8	0.819	170	0.37
50-300	57	2.244	25.8	1.016		

**DME33B43G**



GEAR RATIO	L1		L2		WEIGHT	
	(mm)	(inch)	(mm)	(inch)	g	lb
10-30	64.5	2.539	20.8	0.819	200	0.44
50-300	69.5	2.736	25.8	1.016		

● with 43G TYPE GEARBOX

Model	Gear ratio		10	*18	*20	30	50	60	75	100	*120	*150
	Rated speed	r/min	450	250	225	150	90	75	60	45	37.5	30
DME33S43G □ ☆	Rated torque	N·m	0.011	0.018	0.021	0.032	0.048	0.052	0.072	0.096	0.098	0.12
		oz·in	1.67	2.64	3.06	4.58	6.80	8.19	10.28	13.61	13.89	18.05
DME33B43G □ ☆	Rated speed	r/min	370	205	185	123	74	61.6	49.3	40	34	28.4
		Rated torque	N·m	0.064	0.1	0.11	0.16	0.25	0.3	0.38	0.39	0.39
		oz·in	9.03	13.89	15.28	23.61	36.11	43.05	54.16	55.55	55.55	55.55

Model	Gear ratio		*180	*200	*250	*300
	Rated speed	r/min	25	22.5	18	15
DME33S43G □ ☆	Rated torque	N·m	0.15	0.16	0.21	0.25
		oz·in	22.22	23.61	30.55	36.11
DME33B43G □ ☆	Rated speed	r/min	24.4	22.2	18.2	15.4
		Rated torque	N·m	0.39	0.39	0.39
		oz·in	55.55	55.55	55.55	55.55

NOTES 1: On models marked with asterisks (\*), the direction of the gearbox shaft rotation is in reverse of the motor rotation direction.  
2: In notation model number : fill the reduction ratio denominator in the position marked with the box sign □; fill the voltage in the position marked with the star sign ☆.

# DME33

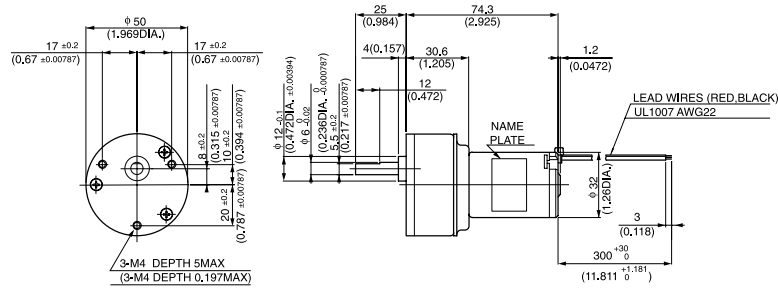
MODEL CODE	VOLTAGE	OUTPUT	CURRENT
SA	12V	0.7W	0.12A
SB	24V	0.7W	0.06A
BA	12V	3.0W	0.42A
BB	24V	3.0W	0.22A

## WITH GEARBOX 50G



50G

### ●DIMENSIONS Unit mm(inch) DME33B50G



(WEIGHT 300g 0.66 lb)

### ●with 50G TYPE GEARBOX

Model	Gear ratio		9	18	*27	*36	*54	*72	96	144	192	256
	Rated speed	r/min	411	205	137	102	68.5	51.3	38.5	25.7	19.3	15.7
DME33B50G <input type="checkbox"/> ☆	Rated torque	N-m	0.057	0.11	0.15	0.21	0.3	0.41	0.49	0.74	0.98	0.98
		oz-in	8.05	15.28	20.83	29.16	43.05	58.33	69.44	104.15	138.87	138.87

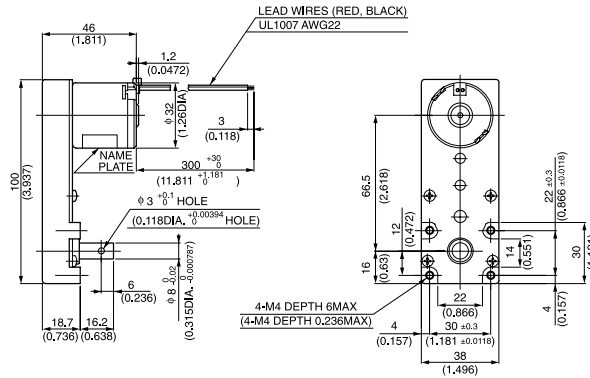
## WITH GEARBOX L

Gear heads for  
intermittent drive



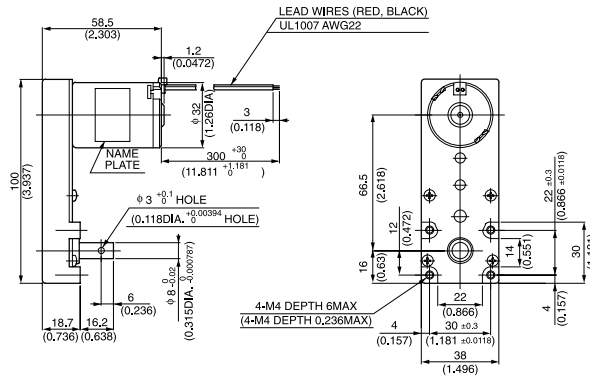
L

### ●DIMENSIONS Unit mm(inch) DME33SL



(WEIGHT 240 g 0.53 lb)

### DME33BL



(WEIGHT 270 g 0.6 lb)

### ●with L TYPE GEARBOX

Model	Gear ratio		30	50	120	150	200	255
	Rated speed	r/min	150	90	37.5	30	22.5	17.6
DME33SL <input type="checkbox"/> ☆	Rated torque	N-m	0.025	0.043	0.098	0.13	0.17	0.22
		oz-in	3.61	6.11	13.89	18.05	23.61	30.55
DME33BL <input type="checkbox"/> ☆	Rated speed	r/min	139	83.7	34.9	27.9	20.9	16.4
		N-m	0.086	0.14	0.34	0.43	0.58	0.74
		oz-in	12.22	19.44	48.61	61.10	81.93	104.15

NOTES 1: On models marked with asterisks (\*), the direction of the gearbox shaft rotation is in reverse of the motor rotation direction.  
2: In notation model number : fill the reduction ratio denominator in the position marked with the box sign ; fill the voltage in the position marked with the star sign ☆.



WITH GEARBOX

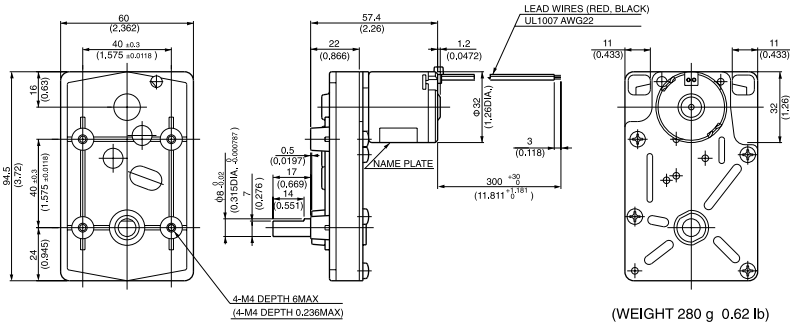
# 5C

Gear heads for intermittent drive



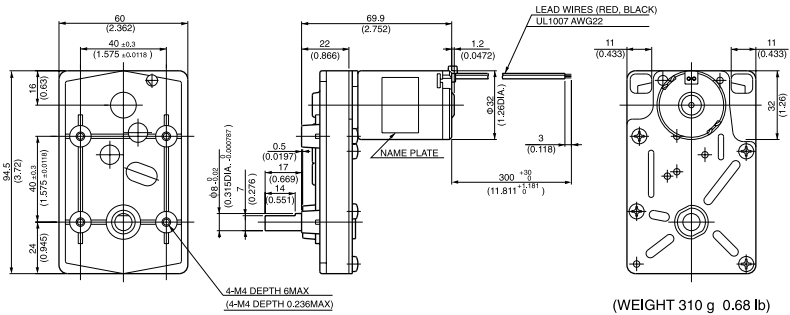
5C

● DIMENSIONS Unit mm(inch)  
DME33S5C



(WEIGHT 280 g 0.62 lb)

DME33B5C



(WEIGHT 310 g 0.68 lb)

● with 5C TYPE GEARBOX

Model	Gear ratio		*20	*30	*40	*50	*60	*80	*100	*150	200	250
		Rated speed	r/min	225	150	112	90	75	56.2	45	30	22.5
DME33S5C □ ☆	Rated torque	N·m	0.022	0.032	0.043	0.053	0.064	0.085	0.11	0.16	0.19	0.24
		oz·in	3.06	4.58	6.11	7.50	9.03	12.08	15.28	22.22	26.39	33.33
DME33B5C □ ☆	Rated speed	r/min	185	123	92.5	74	61.6	46.2	37	24.6	18.8	16
	Rated torque	N·m	0.11	0.17	0.23	0.28	0.34	0.46	0.57	0.85	0.98	0.98
		oz·in	15.28	23.61	31.94	40.27	48.61	63.88	80.55	120.82	138.87	138.87
Model	Gear ratio		300	400	500							
	Rated speed	r/min	15	11.2	9							
DME33S5C □ ☆	Rated torque	N·m	0.28	0.38	0.48							
		oz·in	40.27	54.16	68.05							
DME33B5C □ ☆	Rated speed	r/min	13.9	10.9	9							
	Rated torque	N·m	0.98	0.98	0.98							
		oz·in	138.87	138.87	138.87							

NOTES 1: On models marked with asterisks (\*), the direction of the gearbox shaft rotation is in reverse of the motor rotation direction.  
2: In notation model number : fill the reduction ratio denominator in the position marked with the box sign □; fill the voltage in the position marked with the star sign ☆.

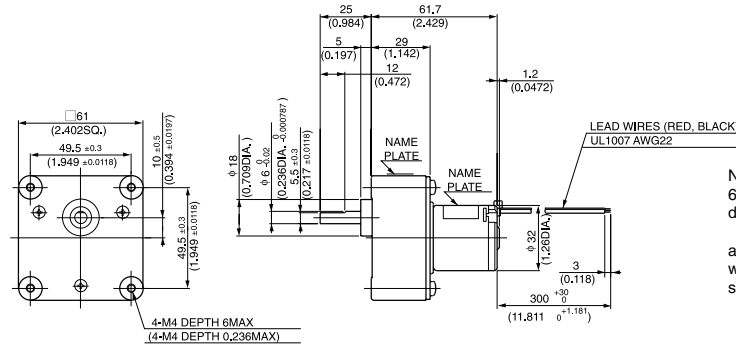
# DME33

## WITH GEARBOX 6DG



6DG

### ● DIMENSIONS Unit mm(inch) DME33S6DG



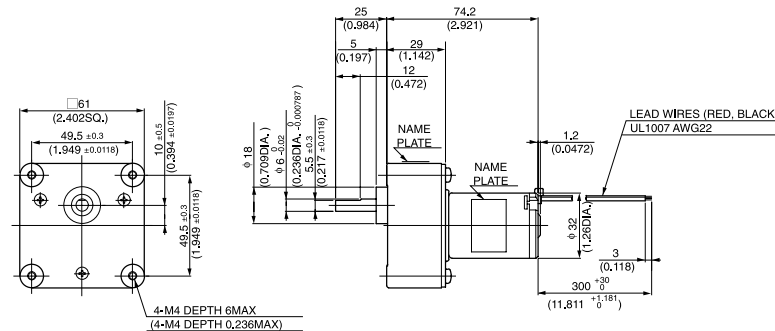
A standard gear head (sold separately) has four holes of 4.5mm (0.177inch) diameter and attached with four bolts of M4 x 45mm. (M4 x 1.77inch)

(WEIGHT 370 g 0.82 lb)

#### NOTE:

6DG gearboxes are available for either 4.5mm diameter mounting holes or M4 x 6mm tapped holes. 4.5mm diameter mounting holes type gearboxes are available as stock components. When ordering, please write the motor model and gearbox model numbers separately, as in the following example:  
Pinion Shaft Motor + Gearbox  
**DME33B6HPB + 6DG**  
M4 x 6mm tapped mounting hole type gearboxes are available only on demand, and are supplied only as please write model number as a single unit, as in the following example : **DME33B6H**

### DME33B6DG



A standard gear head (sold separately) has four holes of 4.5mm (0.177inch) diameter and attached with four bolts of M4 x 45mm. (M4 x 1.77inch)

(WEIGHT 400 g 0.88 lb)

### ● with 6DG TYPE GEARBOX MOTOR MODEL DME33S6HP☆ or DME33B6HP☆ & GEARBOX MODEL 6DG□

Model	Gear ratio												
	Rated speed	r/min	900	360	300	180	150	90	60	45	30	25	18
DME33S6HP☆ & 6DG□	Rated torque	N-m	0.006	0.015	0.018	0.026	0.032	0.053	0.08	0.11	0.14	0.17	0.24
		oz-in	0.83	2.08	2.50	3.75	4.58	7.50	11.39	15.28	19.44	23.61	33.33
DME33B6HP☆ & 6DG□	Rated speed	r/min	740	296	246	148	123	74	49.3	37	24.6	20.5	16
		Rated torque	N-m	0.031	0.079	0.095	0.14	0.17	0.28	0.42	0.57	0.77	0.92
	oz-in		4.44	11.25	13.47	19.44	23.61	40.27	59.71	80.55	108.32	130.54	138.87
Model	Gear ratio												
	Rated speed	r/min	15	10	9	6	5	2.4					
DME33S6HP☆ & 6DG□	Rated torque	N-m	0.28	0.43	0.43	0.65	0.77	0.98					
		oz-in	40.27	61.10	61.10	91.66	109.71	138.87					
DME33B6HP☆ & 6DG□	Rated speed	r/min	13.9	9.9	8.9	6.1	5.2	2.7					
		Rated torque	N-m	0.98	0.98	0.98	0.98	0.98	0.98				
	oz-in		138.87	138.87	138.87	138.87	138.87	138.87					

#### NOTES

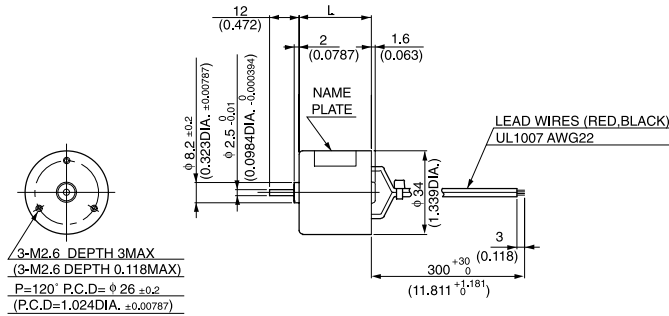
- 1: On models marked with asterisks (\*), the direction of the gearbox shaft rotation is in reverse of the motor rotation direction.
- 2: In notation model number : fill the reduction ratio denominator in the position marked with the box sign □; fill the voltage in the position marked with the star sign ☆.

# DME34

MODEL CODE	VOLTAGE	OUTPUT	CURRENT
SA	12V	1.3W	0.2A
SB	24V	1.3W	0.1A
BA	12V	4.5W	0.65A
BB	24V	4.5W	0.31A
KB	24V	7W	0.41A

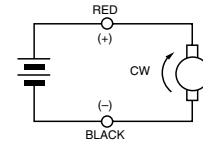


## ● DIMENSIONS Unit mm(inch)

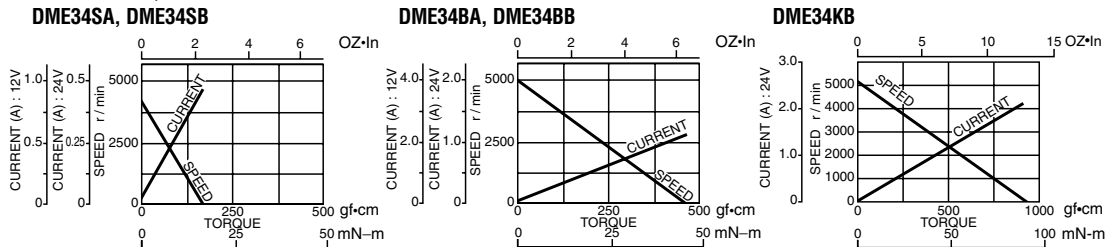


Model	L	Weight	
		g	lb
DME34SA	29.5	100	0.22
DME34SB	29.5	100	0.22
DME34BA	35.0	110	0.24
DME34BB	35.0	110	0.24
DME34KB	45	250	0.55

## ● CONNECTION



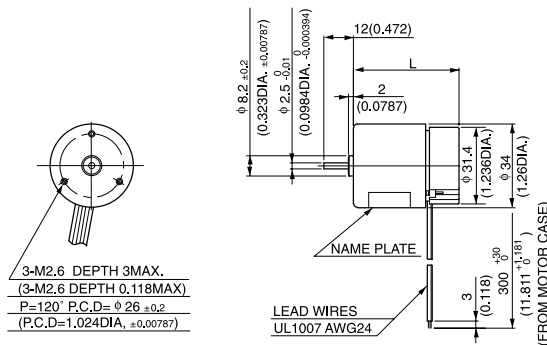
## ● CURRENT, SPEED-TORQUE CURVE



## ● STANDARD SPECIFICATIONS

Model	Rated					No load		Stall torque		
	Output W	Voltage V	Torque		Current A	Speed r/min	Current A	Speed r/min	mN-m	oz-in
			mN-m	oz-in						
DME34SA	1.3	12	3.9	0.56	0.2	3300	0.04	4300	17	2.36
DME34SB	1.3	24	3.9	0.56	0.1	3300	0.02	4300	17	2.36
DME34BA	4.5	12	11.8	1.67	0.65	3700	0.04	5000	45	6.39
DME34BB	4.5	24	11.8	1.67	0.31	3700	0.04	5000	45	6.39
DME34KB	7	24	14.7	2.08	0.41	4300	0.06	5100	92	13.03

## ● REVOLUTION SENSOR MAGNET TYPE

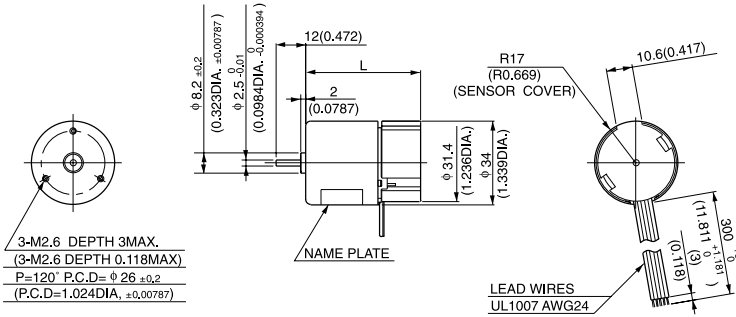


Model	L	Weight	
		g	lb
DME34SMA	43.1	110	0.24
DME34SMB	43.1	110	0.24
DME34BMA	48.6	120	0.26
DME34BMB	48.6	120	0.26
DME34KMB	58.6	260	0.57

# DME34

MODEL CODE	VOLTAGE	OUTPUT	CURRENT
SA	12V	1.3W	0.2A
SB	24V	1.3W	0.1A
BA	12V	4.5W	0.65A
BB	24V	4.5W	0.31A
KB	24V	7W	0.41A

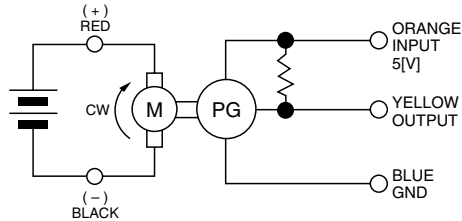
## ● REVOLUTION SENSOR OPTICAL TYPE



Model	L	Weight	
		g	lb
DME34SEA	47.1	120	0.26
DME34SEB			
DME34BEA	52.6	130	0.29
DME34BEB			
DME34KEB	62.6	270	0.59

## ● CONNECTION OF REVOLUTION SENSOR

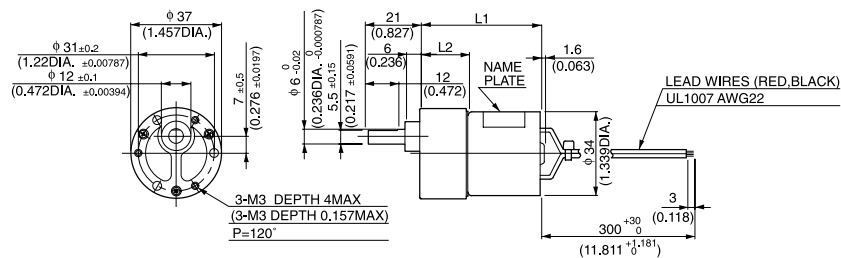
DME34SMA, DME34SMB, DME34BMA, DME34BMB  
DME34SEA, DME34SEB, DME34BEA, DME34BEB



● SPECIFICATION OF REVOLUTION SENSOR ARE SHOWN ON PAGE 4.

## ● DIMENSIONS Unit mm(inch)

DME34S36G



GEAR RATIO	L1		L2		WEIGHT	
	(mm)	(inch)	(mm)	(inch)	g	lb
10	49.3	1.941	19.8	0.78	200	0.44
20-30	51.8	2.039	22.3	0.878		
50-100	54.3	2.138	24.8	0.976		
120-300	56.8	2.236	27.3	1.075	220	0.49
400-600	59.3	2.335	29.8	1.173		

WITH GEARBOX

# 36G

Gear heads for  
intermittent drive

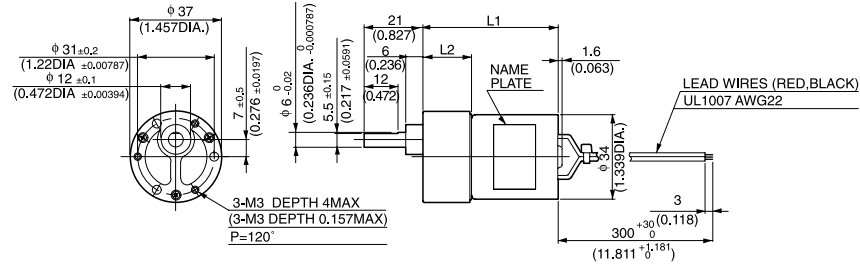


36G

# WITH GEARBOX 36G

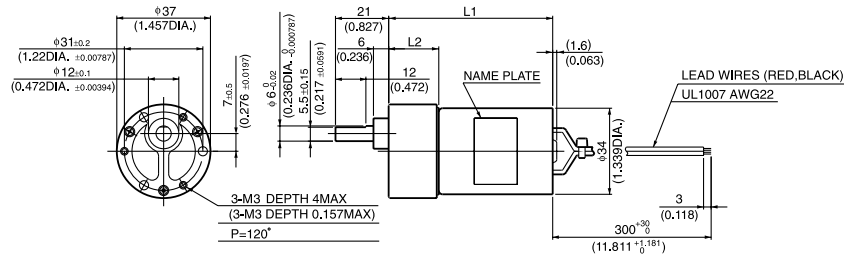
Gear heads for  
intermittent drive

## DME34B36G



GEAR RATIO	L1		L2		WEIGHT	
	(mm)	(inch)	(mm)	(inch)	g	lb
10	54.8	2.157	19.8	0.78	210	0.46
20-30	57.3	2.256	22.3	0.878		
50-100	59.8	2.354	24.8	0.976		
120-300	62.6	2.465	27.3	1.075	230	0.51
400-600	64.8	2.551	29.8	1.173		

## DME34K36G



GEAR RATIO	L1		L2		WEIGHT	
	(mm)	(inch)	(mm)	(inch)	g	lb
10	64.8	2.551	19.8	0.78	350	0.77
20-30	67.3	2.669	22.3	0.878		
50-100	69.8	2.748	24.8	0.976		
120-300	72.6	2.858	27.3	1.075	370	0.82
400-600	74.8	2.945	29.8	1.173		

### ● with 36G TYPE GEARBOX

Model	Gear ratio		10	*18	*20	30	50	60	75	100	*120	*150	*180
		Rated speed	r/min	330	183	165	110	66	55	44	33	27.5	22
DME34S36G <input type="checkbox"/> ☆	Rated torque	N-m	0.031	0.052	0.06	0.09	0.12	0.14	0.18	0.25	0.27	0.34	0.39
		oz-in	4.44	7.22	8.33	12.50	18.05	20.83	26.39	36.11	38.88	48.61	55.55
DME34B36G <input type="checkbox"/> ☆	Rated speed	r/min	370	205	185	123	74	65	54.9	43.4	36.5	30	25.5
	Rated torque	N-m	0.095	0.14	0.16	0.25	0.38	0.39	0.39	0.39	0.39	0.39	0.39
DME34K36G <input type="checkbox"/> B	Rated speed	r/min	430	239	215	143	89.0	75.9	62.2	47.7	40.0	32.4	27.2
	Rated torque	N-m	0.12	0.19	0.21	0.32	0.39	0.39	0.39	0.39	0.39	0.39	0.39
		oz-in	16.99	26.90	29.73	45.31	55.55	55.55	55.55	55.55	55.55	55.55	55.55

Model	Gear ratio		*200	*250	*300	400	500	600
		Rated speed	r/min	17.2	14.5	12.4	9.5	7.8
DME34S36G <input type="checkbox"/> ☆	Rated torque	N-m	0.39	0.39	0.39	0.39	0.39	0.39
		oz-in	55.55	55.55	55.55	55.55	55.55	55.55
DME34B36G <input type="checkbox"/> ☆	Rated speed	r/min	23.1	18.8	15.8	12	9.6	8.1
	Rated torque	N-m	0.39	0.39	0.39	0.39	0.39	0.39
DME34K36G <input type="checkbox"/> B	Rated speed	r/min	24.6	19.9	16.6	12.5	10.0	8.39
	Rated torque	N-m	0.39	0.39	0.39	0.39	0.39	0.39
		oz-in	55.55	55.55	55.55	55.55	55.55	55.55

NOTES 1: On models marked with asterisks (\*), the direction of the gearbox shaft rotation is in reverse of the motor rotation direction.  
2: In notation model number : fill the reduction ratio denominator in the position marked with the box sign  ; fill the voltage in the position marked with the star sign ☆.

# DME34

WITH GEARBOX  
**43G**

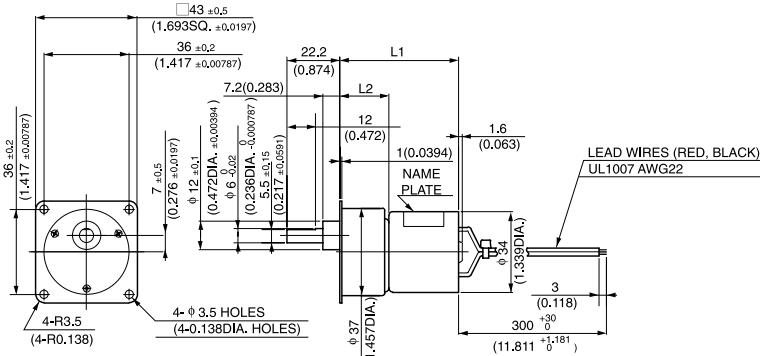
Gear heads for  
intermittent drive



43G

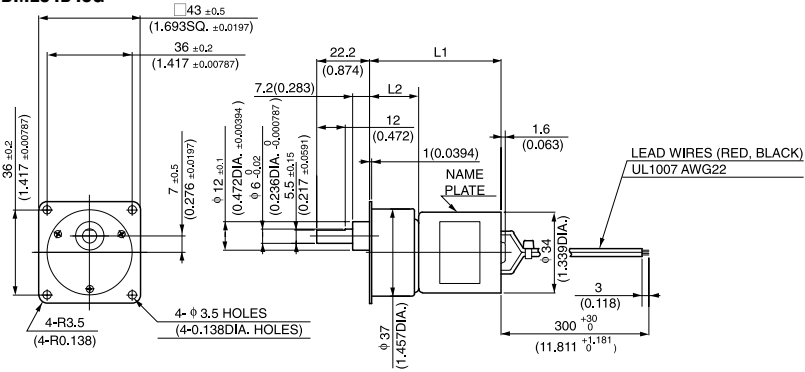
MODEL CODE	VOLTAGE	OUTPUT	CURRENT
SA	12V	1.3W	0.2A
SB	24V	1.3W	0.1A
BA	12V	4.5W	0.65A
BB	24V	4.5W	0.31A
KB	24V	7W	0.41A

● DIMENSIONS Unit mm(inch)  
**DME34S43G**



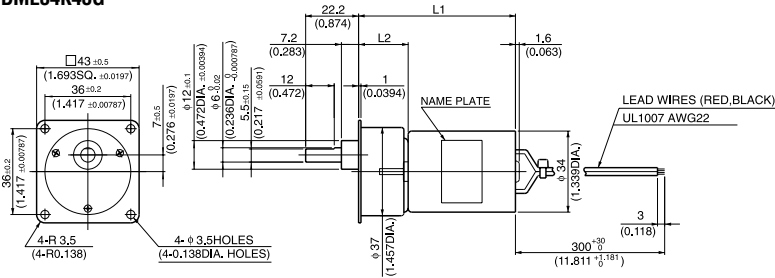
GEAR RATIO	L1		L2		WEIGHT	
	(mm)	(inch)	(mm)	(inch)	g	lb
10~30	50.3	1.98	20.8	0.819	200	0.44
50~300	55.3	2.177	25.8	1.016		

**DME34B43G**



GEAR RATIO	L1		L2		WEIGHT	
	(mm)	(inch)	(mm)	(inch)	g	lb
10~30	55.8	2.197	20.8	0.819	210	0.46
50~300	60.8	2.394	25.8	1.016		

**DME34K43G**



GEAR RATIO	L1		L2		WEIGHT	
	(mm)	(inch)	(mm)	(inch)	g	lb
10~30	65.8	2.591	20.8	0.819	350	0.77
50~300	70.8	2.787	25.8	1.016		

●with 43G TYPE GEARBOX

Model	Gear ratio		10	*18	*20	30	50	60	75	100	*120	*150
	Rated speed	r/min	330	183	165	110	66	55	44	33	27.5	22
DME34S43G <input type="checkbox"/> ☆	Rated torque	N·m	0.031	0.051	0.06	0.09	0.12	0.14	0.18	0.25	0.27	0.34
		oz·in	4.44	7.22	8.33	12.50	18.05	20.83	26.39	36.11	38.88	48.61
DME34B43G <input type="checkbox"/> ☆	Rated speed	r/min	370	205	185	123	74	65	54.9	43.4	36.5	30
		Rated torque	N·m	0.095	0.14	0.16	0.25	0.38	0.39	0.39	0.39	0.39
DME34K43G <input type="checkbox"/> B	Rated speed	r/min	430	239	215	143	89.0	75.9	62.2	47.4	40.0	32.4
		Rated torque	N·m	0.12	0.19	0.21	0.32	0.39	0.39	0.39	0.39	0.39
		oz·in	16.99	26.90	29.73	45.31	55.55	55.55	55.55	55.55	55.55	55.55

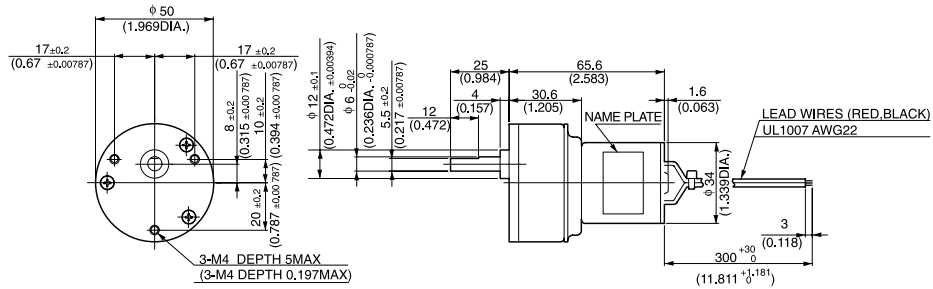
Model	Gear ratio		*180	*200	*250	*300
	Rated speed	r/min	18.6	17.2	14.5	12.4
DME34S43G <input type="checkbox"/> ☆	Rated torque	N·m	0.39	0.39	0.39	0.39
		oz·in	55.55	55.55	55.55	55.55
DME34B43G <input type="checkbox"/> ☆	Rated speed	r/min	25.5	23.1	18.8	15.8
		Rated torque	N·m	0.39	0.39	0.39
DME34K43G <input type="checkbox"/> B	Rated speed	r/min	27.2	24.6	19.9	16.6
		Rated torque	N·m	0.39	0.39	0.39
		oz·in	55.55	55.55	55.55	55.55

WITH GEARBOX  
**50G**



50G

●DIMENSIONS Unit mm(inch)  
DME34B50G



(WEIGHT 310g 0.68lb)

●with 50G TYPE GEARBOX

Model	Gear ratio		9	18	*27	*36	*54	*72	96	144	192	256
	Rated speed	r/min	411	205	137	102	68.5	51.4	38.5	26.7	21.5	2.5
DME34B50G <input type="checkbox"/> ☆	Rated torque	N·m	0.085	0.17	0.23	0.3	0.46	0.62	0.74	0.98	0.98	0.98
		oz·in	12.08	23.61	31.94	43.05	65.27	87.49	104.15	138.87	138.87	138.87

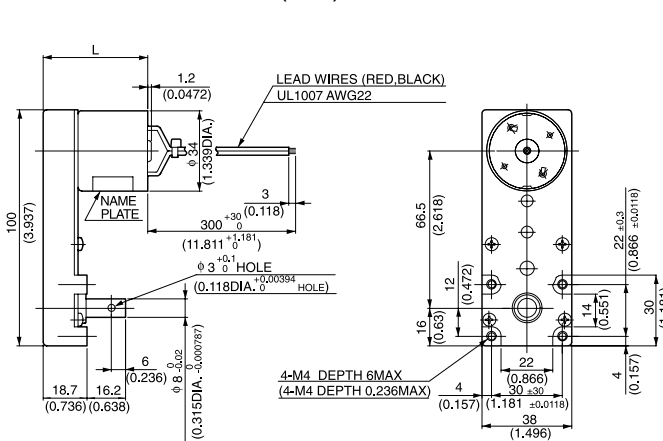
WITH GEARBOX  
**L**

Gear heads for  
intermittent drive



L

●DIMENSIONS Unit mm(inch)



Model	L	Weight	
		g	lb
DME34SL	44.3	270	0.6
DME34BL	49.8	280	0.62
DME34KL	59.8	420	0.93

NOTES 1: On models marked with asterisks (\*), the direction of the gearbox shaft rotation is in reverse of the motor rotation direction.  
2: In notation model number : fill the reduction ratio denominator in the position marked with the box sign  ; fill the voltage in the position marked with the star sign ☆.

# DME34

MODEL CODE	VOLTAGE	OUTPUT	CURRENT
SA	12V	1.3W	0.2A
SB	24V	1.3W	0.1A
BA	12V	4.5W	0.65A
BB	24V	4.5W	0.31A
KB	24V	7W	0.41A

WITH GEARBOX

## L

Gear heads for intermittent drive

●with L TYPE GEARBOX

Model	Gear ratio		30	50	120	150	200	255
	Rated speed	r/min	110	66	27	22	16	13
DME34SL□☆	Rated torque	N-m	0.07	0.11	0.28	0.34	0.46	0.59
		oz-in	9.72	15.28	38.88	48.61	65.27	83.32
DME34BL□☆	Rated speed	r/min	123	74	30.8	25.1	20.4	16.8
	Rated torque	N-m	0.21	0.34	0.83	0.98	0.98	0.98
		oz-in	29.16	48.61	118.04	138.87	138.87	138.87
DME34KL□B	Rated speed	r/min	143	86.0	36.2	30.0	23.2	18.6
	Rated torque	N-m	0.26	0.43	0.98	0.98	0.98	0.98
		oz-in	36.81	60.88	138.87	138.87	138.87	138.87

NOTES 1: On models marked with asterisks (\*), the direction of the gearbox shaft rotation is in reverse of the motor rotation direction.  
2: In notation model number : fill the reduction ratio denominator in the position marked with the box sign □ ; fill the voltage in the position marked with the star sign ☆.

WITH GEARBOX

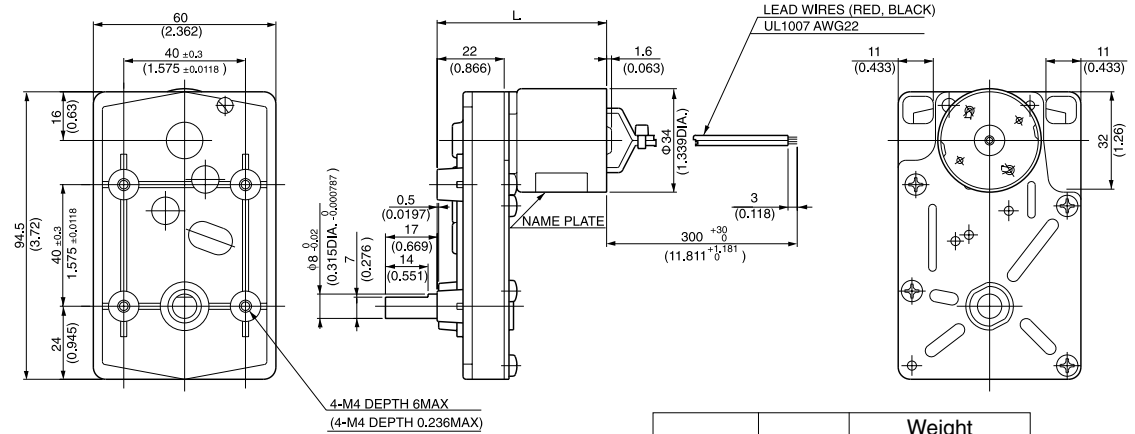
## 5C

Gear heads for intermittent drive



5C

●DIMENSIONS Unit mm(inch)



Model	L	Weight	
		g	lb
DME34S5C	55.7	310	0.68
DME34B5C	61.2	320	0.71
DME34K5C	71.2	460	1.01

●with 5C TYPE GEARBOX

Model	Gear ratio		*20	*30	*40	*50	*60	*80	*100	*150	200	250
	Rated speed	r/min	165	110	82.5	66	55	41.2	33	22	16.5	13.2
DME34S5C□☆	Rated torque	N-m	0.057	0.085	0.11	0.14	0.17	0.23	0.28	0.42	0.51	0.64
		oz-in	8.05	12.08	15.28	19.44	23.61	31.94	40.27	59.71	72.21	90.27
DME34B5C□☆	Rated speed	r/min	185	123	92.5	74	61.6	46.2	37	26.7	20.8	17.3
	Rated torque	N-m	0.17	0.25	0.34	0.42	0.51	0.69	0.85	0.98	0.98	0.98
		oz-in	23.61	36.11	48.61	59.71	72.21	97.21	120.82	138.87	138.87	138.87
DME34K5C□B	Rated speed	r/min	215	143	107	86.0	71.6	53.7	43.7	30.7	23.4	19.1
	Rated torque	N-m	0.21	0.32	0.43	0.53	0.64	0.85	0.98	0.98	0.98	0.98
		oz-in	29.73	45.31	60.88	75.04	90.62	120.35	138.87	138.87	138.87	138.87

Model	Gear ratio		300	400	500
	Rated speed	r/min	11	8.3	7
DME34S5C□☆	Rated torque	N-m	0.77	0.98	0.98
		oz-in	108.32	138.87	138.87
DME34B5C□☆	Rated speed	r/min	14.8	11.4	9.3
	Rated torque	N-m	0.98	0.98	0.98
		oz-in	138.87	138.87	138.87
DME34K5C□B	Rated speed	r/min	16.1	12.2	9.87
	Rated torque	N-m	0.98	0.98	0.98
		oz-in	138.87	138.87	138.87

NOTES 1: On models marked with asterisks (\*), the direction of the gearbox shaft rotation is in reverse of the motor rotation direction.  
2: In notation model number : fill the reduction ratio denominator in the position marked with the box sign □ ; fill the voltage in the position marked with the star sign ☆.

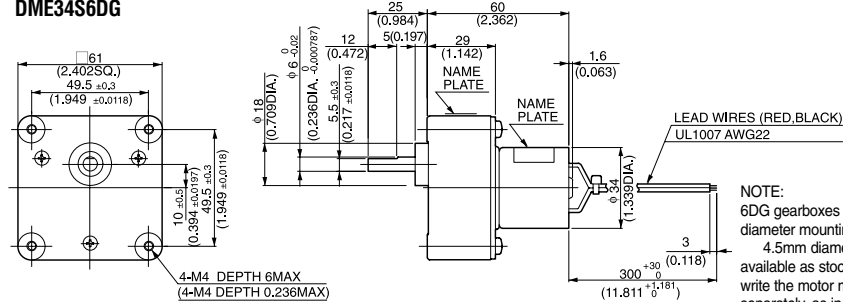


WITH GEARBOX  
**6DG**



**6DG**

● **DIMENSIONS** Unit mm(inch)  
**DME34S6DG**

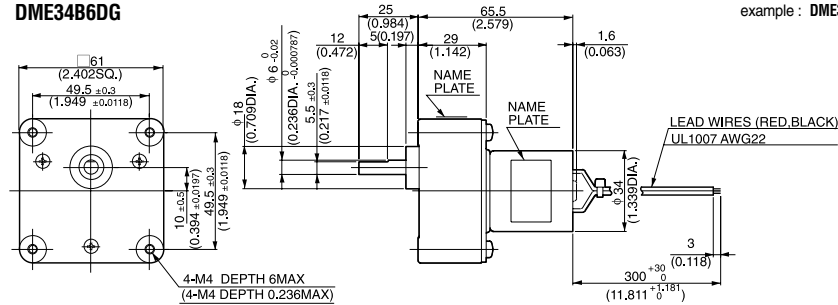


A standard gear head (sold separately) has four holes of 4.5mm (0.177inch) diameter and attached with four bolts of M4 x 45mm. (M4 x 1.77inch)

(WEIGHT 400g 0.88lb)

NOTE:  
6DG gearboxes are available for either 4.5mm diameter mounting holes or M4 x 6mm tapped holes. 4.5mm diameter mounting holes type gearboxes are available as stock components. When ordering, please write the motor model and gearbox model numbers separately, as in the following example:  
Pinion Shaft Motor + Gearbox  
**DME34B6HPB** + **6DG** □  
M4 x 6mm tapped mounting hole type gearboxes are available only on demand, and are supplied only as combined unit with motors. When ordering, please write model number as a single unit, as in the following example : **DME34B6H** □ **B**

**DME34B6DG**



A standard gear head (sold separately) has four holes of 4.5mm (0.177inch) diameter and attached with four bolts of M4 x 45mm. (M4 x 1.77inch)

(WEIGHT 410g 0.9 lb)

● with 6DG TYPE GEARBOX MOTOR MODEL **DME34S6HP**☆, **DME34B6HP**☆ & GEARBOX MODEL **6DG** □

Model	Gear ratio		5	12.5	15	*25	*30	*50	*75	*100	150	180	250
	Rated speed	r/min	660	264	220	132	110	66	44	33	22	18.3	13.2
<b>DME34S6HP</b> ☆ & <b>6DG</b> □	Rated torque	N·m	0.016	0.04	0.048	0.072	0.085	0.14	0.22	0.28	0.38	0.46	0.64
		oz·in	2.22	5.55	6.67	10.14	12.08	19.44	30.55	40.27	54.16	65.27	90.27
<b>DME34B6HP</b> ☆ & <b>6DG</b> □	Rated speed	r/min	740	296	246	148	123	74	49.3	37	26	22.7	17.3
		N·m	0.047	0.12	0.14	0.22	0.26	0.42	0.64	0.85	0.98	0.98	0.98
<b>DME34B6HP</b> ☆ & <b>6DG</b> □	Rated torque	oz·in	6.67	16.66	19.44	30.55	36.11	59.71	90.27	120.82	138.87	138.87	138.87

Model	Gear ratio		300	450	*500	*750	*900	*1800
	Rated speed	r/min	11	7.6	6.9	5	4.2	2.2
<b>DME34S6HP</b> ☆ & <b>6DG</b> □	Rated torque	N·m	0.76	0.98	0.98	0.98	0.98	0.98
		oz·in	108.32	138.87	138.87	138.87	138.87	138.87
<b>DME34B6HP</b> ☆ & <b>6DG</b> □	Rated speed	r/min	14.8	10.3	9.2	6.3	5.3	2.7
		N·m	0.98	0.98	0.98	0.98	0.98	0.98
<b>DME34B6HP</b> ☆ & <b>6DG</b> □	Rated torque	oz·in	138.87	138.87	138.87	138.87	138.87	138.87

# DME34

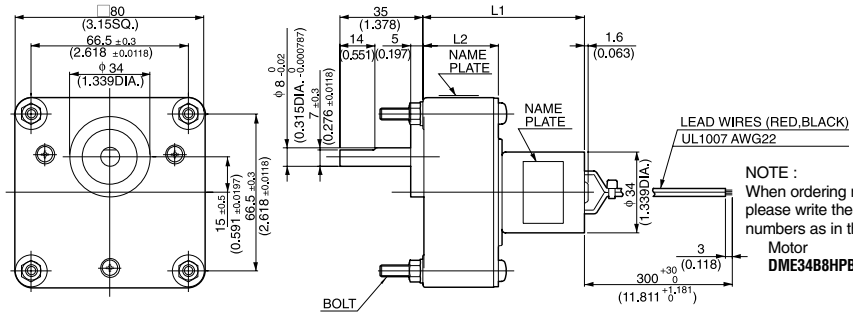
WITH GEARBOX  
**8DG**



8DG

MODEL CODE	VOLTAGE	OUTPUT	CURRENT
SA	12V	1.3W	0.2A
SB	24V	1.3W	0.1A
BA	12V	4.5W	0.65A
BB	24V	4.5W	0.31A
KB	24V	7W	0.41A

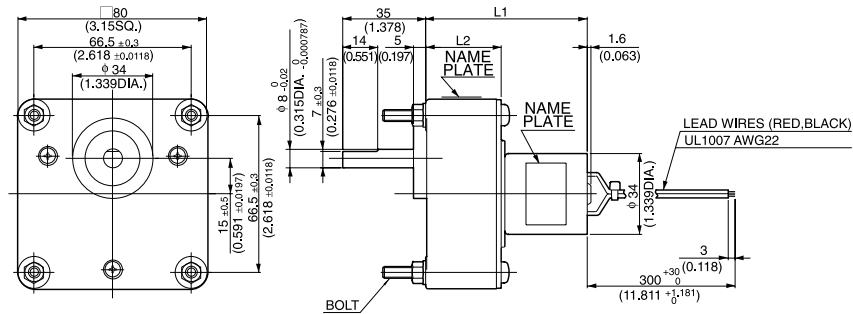
●DIMENSIONS Unit mm(inch)  
**DME34B8DG**



NOTE :  
When ordering motors with 8DG gearboxes,  
please write the motor model and gearbox model  
numbers as in the following example :  
Motor **DME34B8HPB** + Gearbox **+ 8DG** □

GEAR RATIO	L1		L2		BOLT		WEIGHT	
	(mm)	(inch)	(mm)	(inch)	(mm)	(inch)	kg	lb
30~150	68.5	2.697	32	1.26	M5X50	M5X1.969	0.61	1.34
225~1800	78.5	3.090	42	1.65	M5X60	M5X2.362	0.71	1.56

●DIMENSIONS Unit mm(inch)  
**DME34K8H**



GEAR RATIO	L1		L2		BOLT		WEIGHT	
	(mm)	(inch)	(mm)	(inch)	(mm)	(inch)	kg	lb
30~150	78.5	3.090	32	1.26	M5X50	M5X1.969	0.75	1.65
250~1800	88.5	3.484	42	1.65	M5X60	M5X2.362	0.85	1.87

●with 8DG TYPE GEARBOX MOTOR MODEL **DME34B8HP**☆ & GEARBOX MODEL **8DG** □

Model	Gear ratio	r/min	*30	*50	*75	*100	*150	250	300	*500	*750	*1800
			Rated speed	r/min	123	74	49.3	37	24.6	14.8	12.3	7.4
<b>DME34B8HP</b> ☆ & <b>8DG</b> □	Rated torque	N-m	0.25	0.42	0.64	0.85	1.3	1.9	2.3	3.4	3.9	3.9
		oz-in	36.11	59.71	90.27	120.82	180.53	263.86	319.40	486.05	555.49	555.49
<b>DME34K8HP</b> ☆ & <b>8DG</b> □	Rated speed	r/min	143	86.0	57.3	43.0	28.6	17.2	14.3	8.7	6.1	2.7
	Rated torque	N-m	0.32	0.53	0.80	1.0	1.6	2.4	2.9	3.9	3.9	3.9
oz-in		45.31	75.04	113.27	141.59	226.54	339.82	410.61	555.49	555.49	555.49	

NOTES 1: On models marked with asterisks (\*), the direction of the gearbox shaft rotation is in reverse of the motor rotation direction.  
2: In notation model number : fill the reduction ratio denominator in the position marked with the box sign □ ; fill the voltage in the position marked with the star sign ☆.

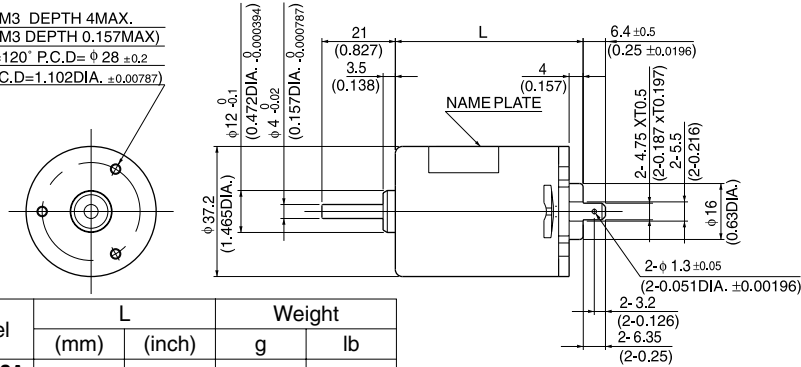
# DME37

MODEL CODE	VOLTAGE	OUTPUT	CURRENT
SA	12V	4.6W	0.78A
SB	24V	4.6W	0.37A
BA	12V	7.2W	1.01A
BB	24V	7.2W	0.53A



## ● DIMENSIONS Unit mm(inch)

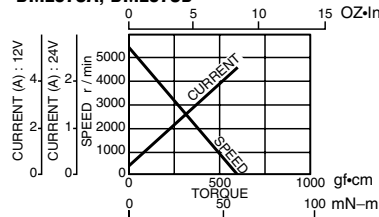
3-M3 DEPTH 4MAX.  
(3-M3 DEPTH 0.157MAX)  
P=120° P.C.D=φ 28 ±0.2  
(P.C.D=1.102DIA. ±0.00787)



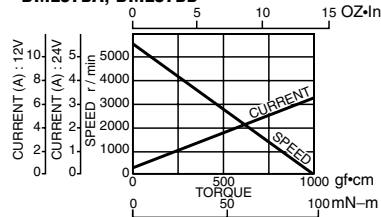
Model	L		Weight	
	(mm)	(inch)	g	lb
DME37SA DME37SB	45.7	1.8	130	0.28
DME37BA DME37BB	53.7	2.11	180	0.40

## ● CURRENT, SPEED-TORQUE CURVE

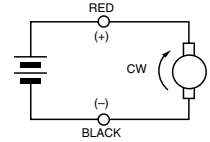
DME37SA, DME37SB



DME37BA, DME37BB



## ● CONNECTION

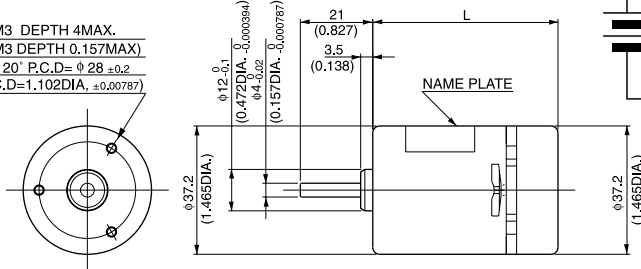


## ● STANDARD SPECIFICATIONS

Model	Rated						No load		Stall torque	
	Output W	Voltage V	Torque		Current A	Speed r/min	Current A	Speed r/min	mN·m	oz·in
			mN·m	oz·in						
DME37SA	4.6	12	10	1.42	0.78	4500	0.26	5500	54	7.64
DME37SB	4.6	24	10	1.42	0.37	4500	0.12	5500	54	7.64
DME37BA	7.2	12	15	2.12	1.01	4700	0.25	5500	98	13.88
DME37BB	7.2	24	15	2.12	0.53	4700	0.13	5500	98	13.88

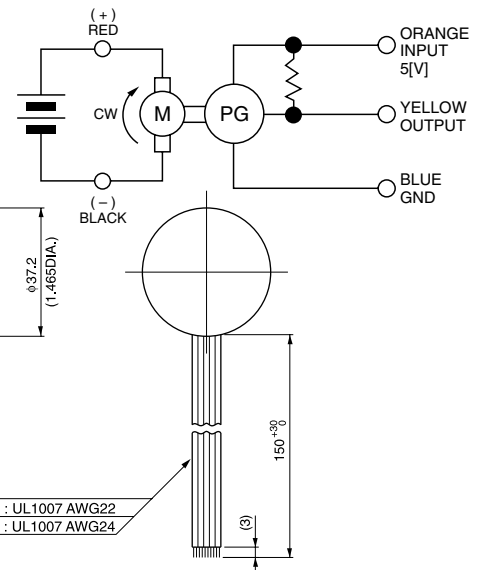
## ● REVOLUTION SENSOR MAGNET TYPE

3-M3 DEPTH 4MAX.  
(3-M3 DEPTH 0.157MAX)  
P=120° P.C.D=φ 28 ±0.2  
(P.C.D=1.102DIA. ±0.00787)



Model	L		Weight	
	mm	inch	g	lb
DME37SMA DME37SMB	53.7	2.11	140	0.31
DME37BMA DME37BMB	61.7	2.43	190	0.42

## ● CONNECTION OF REVOLUTION SENSOR



LEAD WIRES  
MOTOR LEAD : UL1007 AWG22  
PG LEAD : UL1007 AWG24

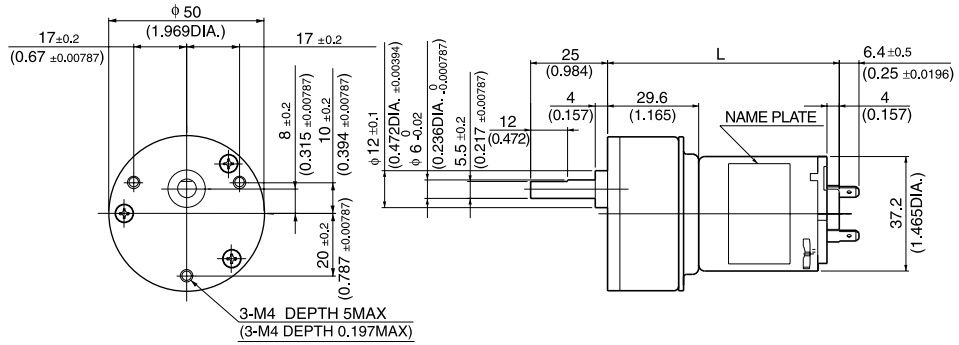
## ● SPECIFICATION OF REVOLUTION SENSOR ARE SHOWN ON PAGE 4.

WITH GEARBOX  
**50G**



50G

●DIMENSIONS Unit mm(inch)



Model	L		Weight	
	(mm)	(inch)	g	lb
DME37S50G	75.3	2.96	280	0.62
DME37B50G	83.3	3.28	330	0.73

●with 50G TYPE GEARBOX

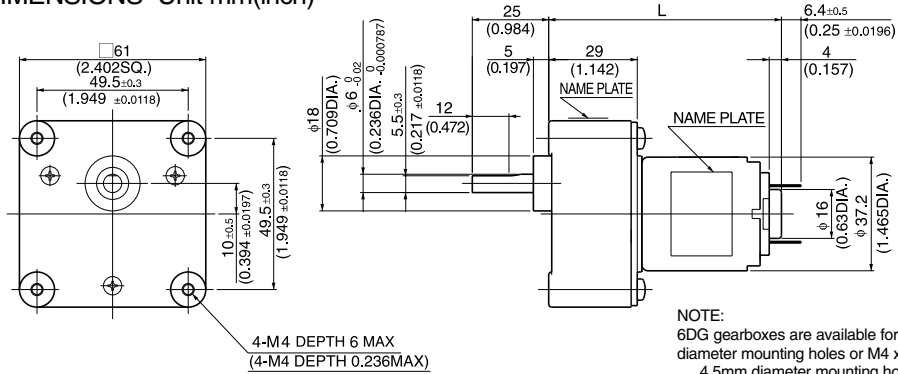
Model	Gear ratio		9	18	*27	*36	*54	*72	96	144	192	256
	Rated speed	r/min	500	250	166	125	83.3	62.5	46.8	31.2	24.5	19.1
DME37S50G <input type="checkbox"/> ☆	Rated torque	N·m	0.072	0.14	0.19	0.25	0.38	0.51	0.62	0.93	0.98	0.98
		oz·in	10.14	19.44	26.39	36.11	54.16	72.21	87.49	130.54	138.87	138.87
DME37B50G <input type="checkbox"/> ☆	Rated speed	r/min	522	261	174	130	87	65.2	48.9	34.2	26.4	20.2
		N·m	0.11	0.22	0.28	0.38	0.58	0.76	0.92	0.98	0.98	0.98
		oz·in	15.28	30.55	40.27	54.16	81.93	108.32	130.54	138.87	138.87	138.87

WITH GEARBOX  
**6DG**



6DG

●DIMENSIONS Unit mm(inch)



A standard gear head (sold separately) has four holes of 4.5mm (0.177inch) diameter and attached with four bolts of M4 x 45mm. (M4 x 1.77inch)

Model	L		Weight	
	(mm)	(inch)	g	lb
DME37S6H	76.2	3.0	430	0.95
DME37B6H	84.2	3.31	480	1.06

NOTE:

6DG gearboxes are available for either 4.5mm diameter mounting holes or M4 x 6mm tapped holes. 4.5mm diameter mounting holes type gearboxes are available as stock components. When ordering, please write the motor model and gearbox model numbers separately, as in the following example:  
Pinion Shaft Motor + Gearbox  
DME37B6HPB + 6DG   
M4 x 6mm tapped mounting hole type gearboxes are available only on demand, and are supplied only as combined unit with motors. When ordering, please write model number as a single unit, as in the following example : DME37B6H

NOTES 1: On models marked with asterisks (\*), the direction of the gearbox shaft rotation is in reverse of the motor rotation direction.  
2: In notation model number : fill the reduction ratio denominator in the position marked with the box sign ; fill the voltage in the position marked with the star sign ☆.

# DME37

WITH GEARBOX  
**6DG**

MODEL CODE	VOLTAGE	OUTPUT	CURRENT
SA	12V	4.6W	0.78A
SB	24V	4.6W	0.37A
BA	12V	7.2W	1.01A
BB	24V	7.2W	0.53A

●with 6DG TYPE GEARBOX MOTOR MODEL **DME37S6HP**☆, **DME37B6HP**☆ & GEARBOX MODEL **6DG**□

Model	Gear ratio		5	12.5	15	*25	*30	*50	*75	*100	150	180	250
		Rated speed	r/min	900	360	300	180	150	90	60	45	30	25.8
<b>DME37S6HP</b> ☆ & <b>6DG</b> □	Rated torque	N-m	0.039	0.098	0.12	0.18	0.22	0.35	0.53	0.72	0.96	0.98	0.98
		oz-in	5.55	13.89	16.66	25.00	30.55	49.99	74.99	101.38	136.09	138.87	138.87
<b>DME37B6HP</b> ☆ & <b>6DG</b> □	Rated speed	r/min	940	376	313	188	156	94	62.6	47.7	33	28	20.7
	Rated torque	N-m	0.059	0.15	0.18	0.26	0.32	0.53	0.8	0.98	0.98	0.98	0.98
		oz-in	8.33	20.83	25.00	37.50	45.83	74.99	113.87	138.87	138.87	138.87	138.87

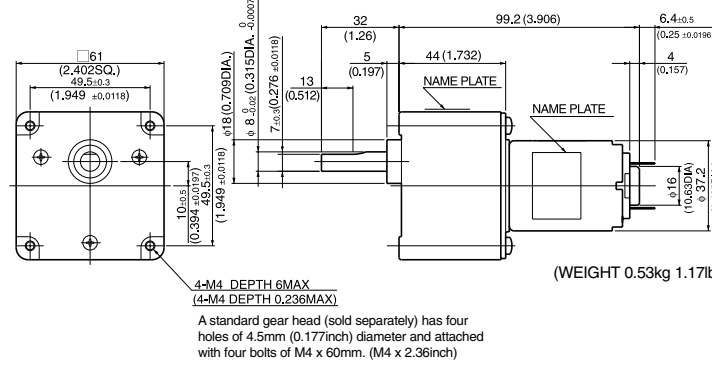
Model	Gear ratio		300	450	*500	*750	*900	*1800
		Rated speed	r/min	16.6	11.4	10.3	7	5.9
<b>DME37S6HP</b> ☆ & <b>6DG</b> □	Rated torque	N-m	0.98	0.98	0.98	0.98	0.98	0.98
		oz-in	138.87	138.87	138.87	138.87	138.87	138.87
<b>DME37B6HP</b> ☆ & <b>6DG</b> □	Rated speed	r/min	17.4	11.8	10.6	7.1	6	3
	Rated torque	N-m	0.98	0.98	0.98	0.98	0.98	0.98
		oz-in	138.87	138.87	138.87	138.87	138.87	138.87

WITH GEARBOX  
**6DGF**



**6DGF**

●DIMENSIONS Unit mm(inch)  
**DME37B6DGF**

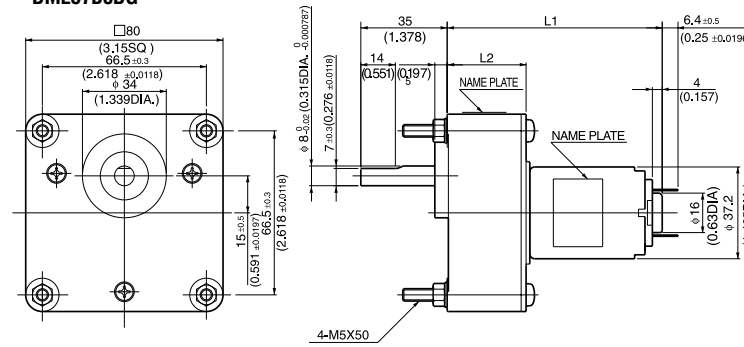


NOTE:  
6DGF gearboxes are available for either 4.5mm diameter mounting holes or M4 x 6mm tapped holes. 4.5mm diameter mounting holes type gearboxes are available as stock components. When ordering, please write the motor model and gearbox model numbers separately, as in the following example:  
Pinion Shaft Motor + Gearbox  
**DME37B6HFPB** + **6DG**□**F**  
M4 x 6mm tapped mounting hole type gearboxes are available only on demand, and are supplied only as combined unit with motors. When ordering, please write model number as a single unit, as in the following example : **DME37B6H**□**F**

●with 6DGF TYPE GEARBOX MOTOR MODEL **DME37B6HFP**☆ & GEARBOX MODEL **6DG**□**F**

Model	Gear ratio		5	*12.5	*15	*25	*30	50	75	100	150	180
		Rated speed	r/min	940	376	313	188	156	94	62.6	47	31.3
<b>DME37B6HFP</b> ☆ & <b>6DG</b> □ <b>F</b>	Rated torque	N-m	0.059	0.13	0.16	0.26	0.32	0.48	0.73	0.96	1.4	1.7
		oz-in	8.33	18.05	22.22	37.50	45.83	68.05	102.76	136.09	194.42	236.08

●DIMENSIONS Unit mm(inch)  
**DME37B8DG**



NOTE :  
When ordering, motors with 8DG gearboxes, please write the motor model and gearbox model numbers as in the following example :  
Motor + Gearbox  
**DME37B8HPB** + **8DG**□

WITH GEARBOX  
**8DG**



**8DG**

GEAR RATIO	L1		L2		BOLT		WEIGHT	
	(mm)	(inch)	(mm)	(inch)	(mm)	(inch)	kg	lb
30~150	87.2	3.433	32	1.26	M5X50	M5X1.969	0.68	1.5
250~1800	97.2	3.826	42	1.654	M5X60	M5X2.362	0.78	1.72

●with 8DG TYPE GEARBOX MOTOR MODEL **DME37B8HP**☆ & GEARBOX MODEL **8DG**□

Model	Gear ratio		*30	*50	*75	*100	*150	250	300	*500	*750	*1800
		Rated speed	r/min	156	94	62.6	47	31.3	18.8	15.6	9.5	6.7
<b>DME37B8HP</b> ☆ & <b>8DG</b> □	Rated torque	N-m	0.32	0.53	0.8	1.1	1.6	2.4	2.8	3.9	3.9	3.9
		oz-in	45.83	74.99	113.87	152.76	222.19	333.29	402.73	555.49	555.49	555.49

NOTES 1: On models marked with asterisks (\*), the direction of the gearbox shaft rotation is in reverse of the motor rotation direction.  
2: In notation model number : fill the reduction ratio denominator in the position marked with the box sign □; fill the voltage in the position marked with the star sign ☆.

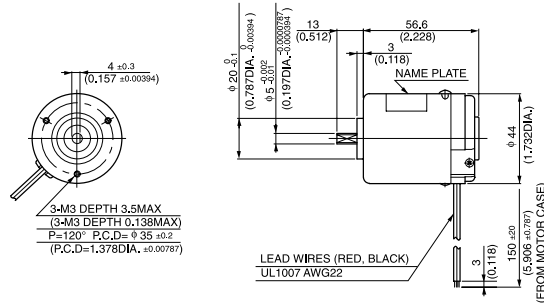
# DME44

MODEL CODE	VOLTAGE	OUTPUT	CURRENT
SA	12V	9.2W	1.31A
SB	24V	9.2W	0.65A
BB	24V	14.8W	0.94A

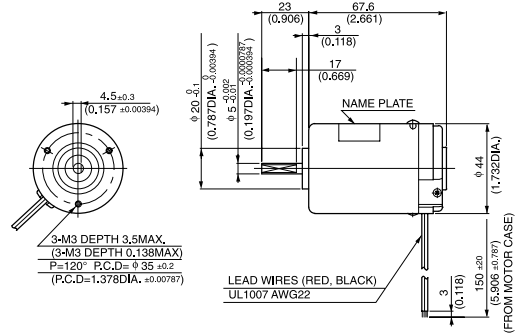


## ● DIMENSIONS Unit mm(inch)

### DME44SA, DME44SB

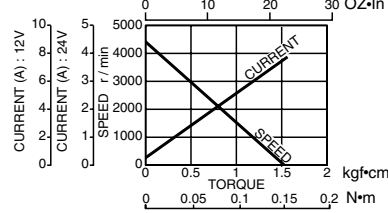


### DME44BA, DME44BB

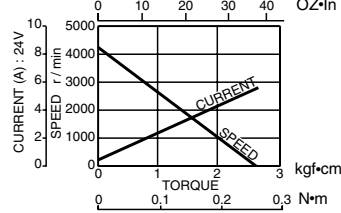


## ● CURRENT, SPEED-TORQUE CURVE

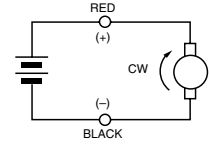
### DME44SA, DME44SB



### DME44BA, DME44BB



## ● CONNECTION

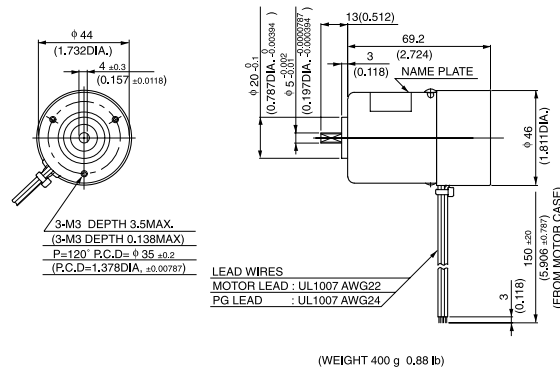


## ● STANDARD SPECIFICATIONS

Model	Rated					No load		Stall torque		Weight		
	Output W	Voltage V	Torque		Current A	Speed r/min	Current A	Speed r/min	mN-m	oz-in	Weight	
			mN-m	oz-in							g	lb
DME44SA	9.2	12	24	3.47	1.31	3600	0.31	4300	150	22.22	300	0.66
DME44SB	9.2	24	24	3.47	0.65	3600	0.15	4300	150	22.22	300	0.66
DME44BB	14.8	24	39	5.55	0.94	3600	0.16	4300	250	36.11	400	0.88

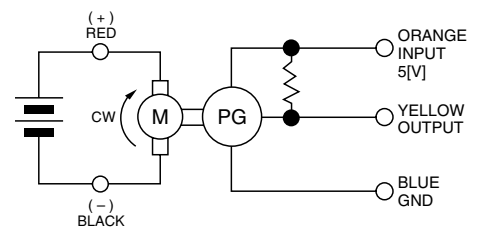
## ● REVOLUTION SENSOR MAGNET TYPE

### DME44SMA, DME44SMB

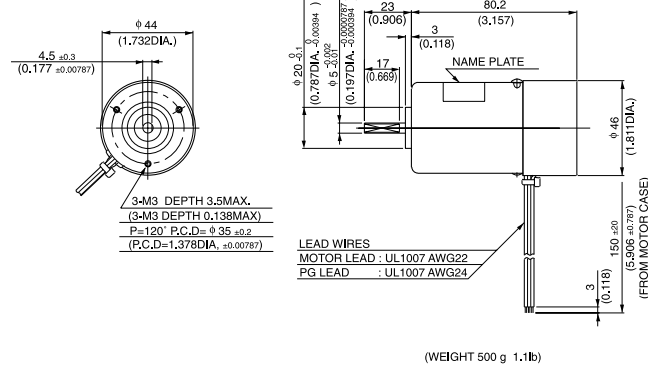


## ● CONNECTION OF REVOLUTION SENSOR

### DME44SMA, DME44SMB, DME44BMB



### DME44BMB



## ● SPECIFICATION OF REVOLUTION SENSOR ARE SHOWN ON PAGE 4.

# DME44

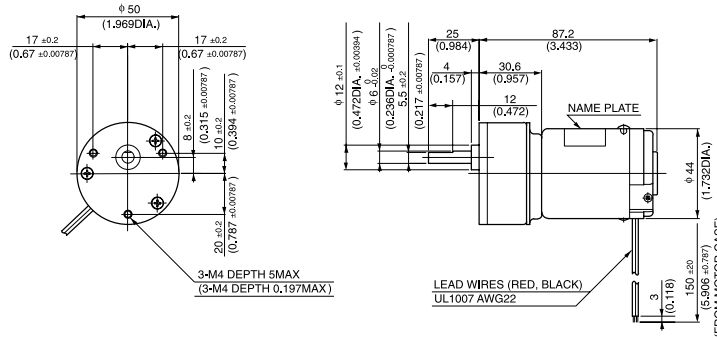
MODEL CODE	VOLTAGE	OUTPUT	CURRENT
SA	12V	9.2W	1.31A
SB	24V	9.2W	0.65A
BB	24V	14.8W	0.94A

## WITH GEARBOX 50G



50G

### ● DIMENSIONS Unit mm(inch) DME44S50G



(WEIGHT 400 g 0.88lb)

### ● with 50G TYPE GEARBOX

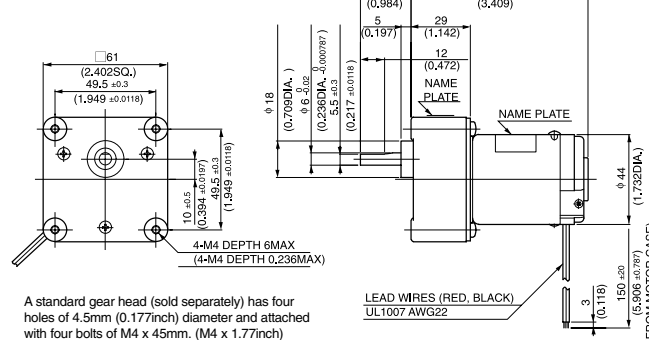
Model	Gear ratio		9	18	*27	*36	*54	*72
	Rated speed	r/min	400	200	133	100	66.6	52.3
DME44S50G <input type="checkbox"/> ☆	Rated torque	N·m	0.18	0.35	0.48	0.64	0.96	0.98
		oz·in	25.00	49.99	68.05	90.27	136.09	138.87

## WITH GEARBOX 6DG



6DG

### ● DIMENSIONS Unit mm(inch) DME44S6DG



A standard gear head (sold separately) has four holes of 4.5mm (0.177inch) diameter and attached with four bolts of M4 x 45mm. (M4 x 1.77inch)

(WEIGHT 600 g 1.32 lb)

#### NOTE:

6DG gearboxes are available for either 4.5mm diameter mounting holes or M4 x 6mm tapped holes. 4.5mm diameter mounting holes type gearboxes are available as stock components. When ordering, please write the motor model and gearbox model numbers separately, as in the following example:  
Pinion Shaft Motor + Gearbox  
DME44B6HPB + 6DG   
M4 x 6mm tapped mounting hole type gearboxes are available only on demand, and are supplied only as combined unit with motors. When ordering, please write model number as with a single unit, as in the following example: DME44B6H  B

### ● with 36G TYPE GEARBOX

Model	Gear ratio		5	12.5	15	*25	*30	*50	*75	*100	150	180	250
	Rated speed	r/min	720	288	240	144	120	72	50.5	39.1	26.7	22.5	16.5
DME44S6HP ☆ & 6DG <input type="checkbox"/>	Rated torque	N·m	0.1	0.25	0.29	0.44	0.53	0.89	0.98	0.98	0.98	0.98	0.98
		oz·in	13.89	34.72	41.66	62.49	74.99	126.37	138.87	138.87	138.87	138.87	138.87

Model	Gear ratio		300	450	*500	*750	*900	*1800
	Rated speed	r/min	13.8	9.3	8.4	5.6	4.7	2.3
DME44S6HP ☆ & 6DG <input type="checkbox"/>	Rated torque	N·m	0.98	0.98	0.98	0.98	0.98	0.98
		oz·in	138.87	138.87	138.87	138.87	138.87	138.87

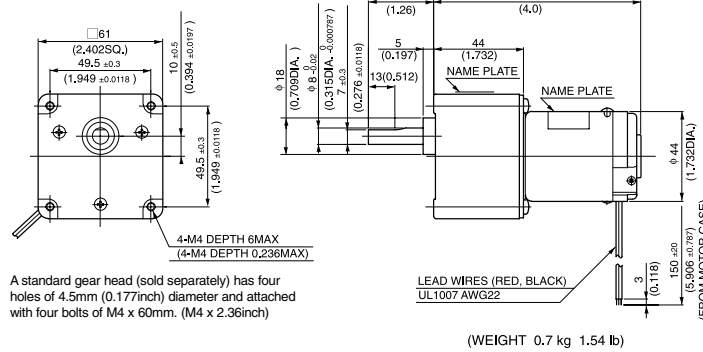
NOTES 1: On models marked with asterisks (\*), the direction of the gearbox shaft rotation is in reverse of the motor rotation direction.  
2: In notation model number : fill the reduction ratio denominator in the position marked with the box sign ; fill the voltage in the position marked with the star sign ☆.

# WITH GEARBOX 6DGF



6DGF

## ●DIMENSIONS Unit mm(inch) DME44S6DGF

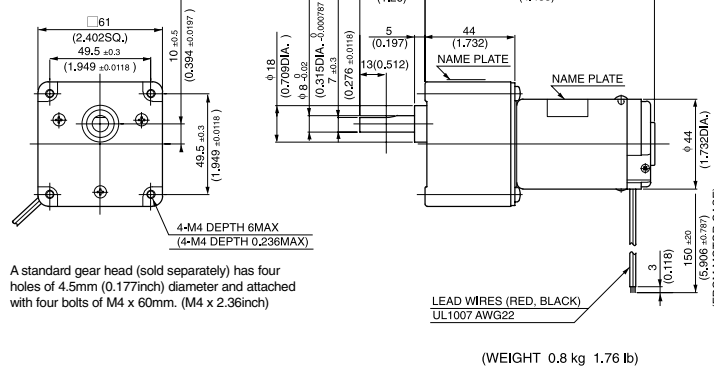


A standard gear head (sold separately) has four holes of 4.5mm (0.177inch) diameter and attached with four bolts of M4 x 60mm. (M4 x 2.36inch)

**NOTE:**

6DGF gearboxes are available for either 4.5mm diameter mounting holes or M4 x 6mm tapped holes. 4.5mm diameter mounting holes type gearboxes are available as stock components. When ordering, please write the motor model and gearbox model numbers separately, as in the following example:  
Pinion Shaft Motor + Gearbox  
**DME44B6HFPB + 6DG □ F**  
M4 x 6mm tapped mounting hole type gearboxes are available only on demand, and are supplied only as combined unit with motors. When ordering, please write model number as a single unit, as in the following example : **DME44B6H □ FB**

## DME44B6DGF



A standard gear head (sold separately) has four holes of 4.5mm (0.177inch) diameter and attached with four bolts of M4 x 60mm. (M4 x 2.36inch)

## ●with 6DGF TYPE GEARBOX MOTOR MODEL DME44S6HFP☆, DME44B6HFPB & GEARBOX MODEL 6DG □ F

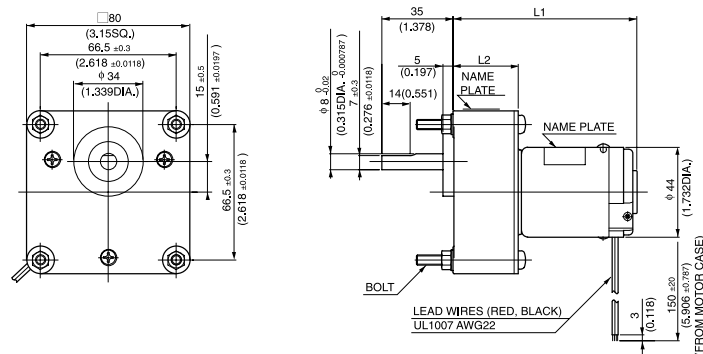
Model	Gear ratio	Gear ratio										
		5	*12.5	*15	*25	*30	50	75	100	150	180	
DME44S6HFP☆ & 6DG □ F	Rated speed	r/min	720	288	240	144	120	72	48	36	24	20.6
	Rated torque	N-m	0.1	0.22	0.27	0.44	0.53	0.80	1.2	1.6	2.4	2.4
oz-in		13.89	30.55	37.50	62.49	74.99	113.87	166.65	222.19	333.29	347.18	
DME44B6HFPB & 6DG □ F	Rated speed	r/min	720	288	240	144	120	72	48	36.3	25.7	21.8
	Rated torque	N-m	0.16	0.35	0.43	0.72	0.85	1.3	1.9	2.4	2.4	2.4
oz-in		22.22	49.99	59.71	101.38	120.82	180.53	263.86	347.18	347.18	347.18	

# WITH GEARBOX 8DG



8DG

## ●DIMENSIONS Unit mm(inch) DME44S8DG



**NOTE :**

When ordering motors with 8DG gearboxes, please write the motor model and gearbox model numbers as in the following example :  
Motor + Gearbox  
**DME44B8HFPB + 8DG □**

GEAR RATIO	L1		L2		BOLT		WEIGHT	
	(mm)	(inch)	(mm)	(inch)	(mm)	(inch)	kg	lb
30~150	90.1	3.547	32	1.26	M5X50	M5X1.969	0.8	1.76
250~1800	100.1	3.941	42	1.654	M5X60	M5X2.362	0.9	1.98

NOTES 1: On models marked with asterisks (\*), the direction of the gearbox shaft rotation is in reverse of the motor rotation direction.  
2: In notation model number : fill the reduction ratio denominator in the position marked with the box sign □; fill the voltage in the position marked with the star sign ☆.

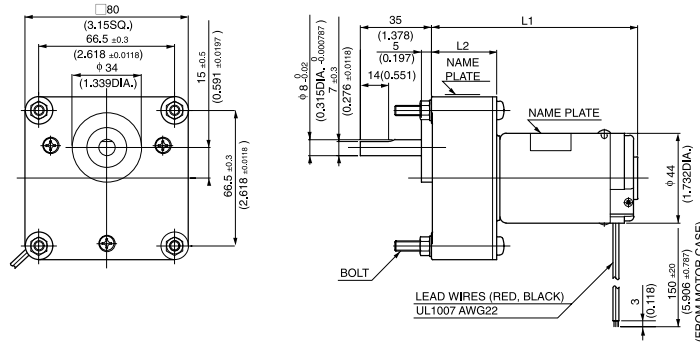


# DME44

WITH GEARBOX  
**8DG**

MODEL CODE	VOLTAGE	OUTPUT	CURRENT
<b>SA</b>	<b>12V</b>	<b>9.2W</b>	<b>1.31A</b>
<b>SB</b>	<b>24V</b>	<b>9.2W</b>	<b>0.65A</b>
<b>BB</b>	<b>24V</b>	<b>14.8W</b>	<b>0.94A</b>

## DME44B8DG



GEAR RATIO	L1		L2		BOLT		WEIGHT	
	(mm)	(inch)	(mm)	(inch)	(mm)	(inch)	kg	lb
30~150	101.1	3.98	32	1.26	M5X50	M5X1.969	0.9	1.98
250~1800	111.1	4.374	42	1.654	M5X60	M5X2.362	1.0	2.2

● with 8DG TYPE GEARBOX MOTOR MODEL **DME44S8HP**☆, **DME44B8HFPB** & GEARBOX MODEL **8DG**□

Model	Gear ratio		*30	*50	*75	*90	*100	*150	250
	Rated speed	r/min	120	72	48	40	36	24	14.4
<b>DME44S8HP</b> ☆ & <b>8DG</b> □	Rated torque	N-m	0.53	0.89	1.3	1.6	1.8	2.7	3.9
		oz-in	74.99	126.37	180.53	222.19	249.97	374.95	555.49
<b>DME44B8HPB</b> & <b>8DG</b> □	Rated speed	r/min	120	72	48	40	36	24.4	15.5
		N-m	0.85	1.4	2.1	2.5	2.8	3.9	3.9
<b>DME44B8HPB</b> & <b>8DG</b> □	Rated torque	oz-in	120.82	194.42	305.52	361.07	402.73	555.49	555.49

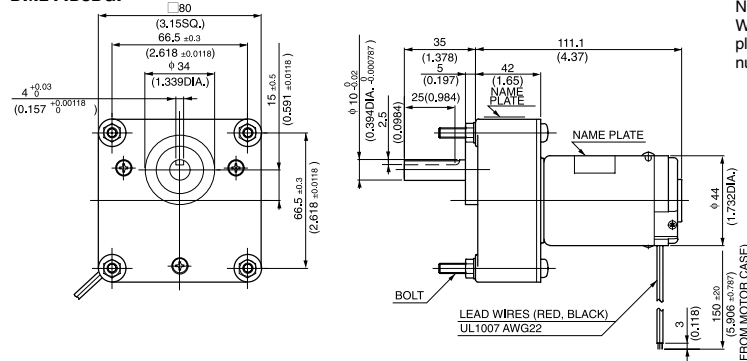
Model	Gear ratio		300	*500	*750	*1800
	Rated speed	r/min	12.4	7.8	5.4	2.3
<b>DME44S8HP</b> ☆ & <b>8DG</b> □	Rated torque	N-m	3.9	3.9	3.9	3.9
		oz-in	555.49	555.49	555.49	555.49
<b>DME44B8HPB</b> & <b>8DG</b> □	Rated speed	r/min	13.1	8	5.5	2.3
		N-m	3.9	3.9	3.9	3.9
<b>DME44B8HPB</b> & <b>8DG</b> □	Rated torque	oz-in	555.49	555.49	555.49	555.49

WITH GEARBOX  
**8DGF**



**8DGF**

## ● DIMENSIONS Unit mm(inch) DME44B8DGF



NOTE :  
When ordering motors with 8DGF gearboxes,  
please write the motor model and gearbox model  
numbers as in the following example :

Motor + Gearbox  
**DME44B8HFPB + 8DG**□F

GEAR RATIO	BOLT		WEIGHT	
	(mm)	(inch)	kg	lb
25~150	M5X60	M5X2.36	1.0	2.2

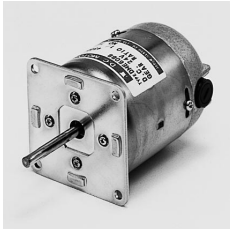
● with 8DGF TYPE GEARBOX MOTOR MODEL **DME44B8HFPB**☆ & GEARBOX MODEL **8DG**□F

Model	Gear ratio		*25	*30	50	75	100	150
	Rated speed	r/min	144	120	72	48	36	24
<b>DME44B8HPB</b> & <b>8DG</b> □F	Rated torque	N-m	0.71	0.85	1.3	1.9	2.5	3.8
		oz-in	101.38	120.82	194.42	263.86	361.07	541.60

NOTES 1: On models marked with asterisks (\*), the direction of the gearbox shaft rotation is in reverse of the motor rotation direction.  
2: In notation model number : fill the reduction ratio denominator in the position marked with the box sign □ ; fill the voltage in the position marked with the star sign ☆.

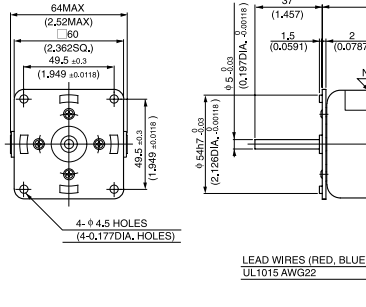
# DME60

MODEL CODE	VOLTAGE	OUTPUT	CURRENT
SA	12V	13W	2.07A
SB	24V	13W	1A
BB	24V	26W	1.79A

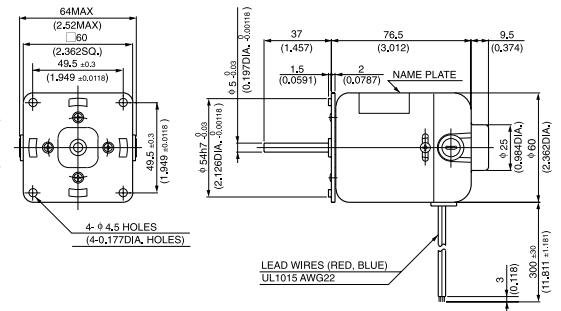


## ● DIMENSIONS Unit mm(inch)

### DME60SA, DME60SB

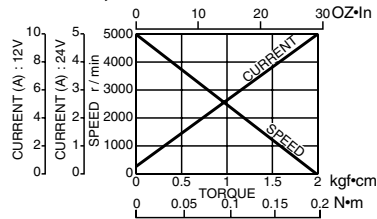


### DME60BB

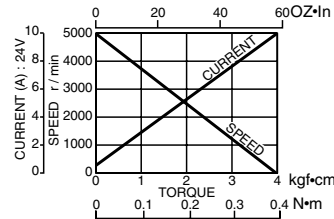


## ● CURRENT, SPEED-TORQUE CURVE

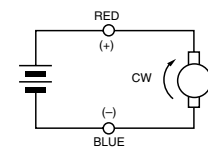
### DME60SA, DME60SB



### DME60BB



## ● CONNECTION



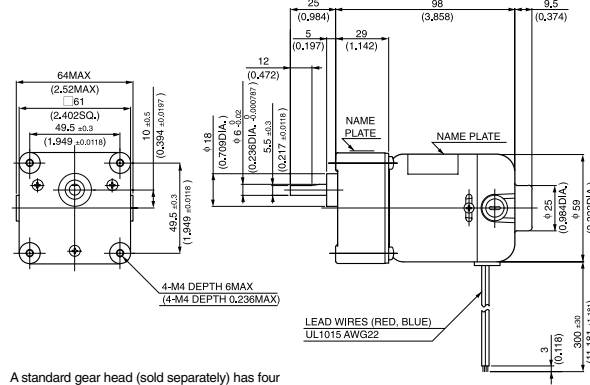
## ● STANDARD SPECIFICATIONS

Model	Rated					No load		Stall torque		Weight		
	Output W	Voltage V	Torque		Current A	Speed r/min	Current A	Speed r/min	mN-m	oz-in	Weight	
			mN-m	oz-in							g	lb
DME60SA	13	12	29	4.17	2.07	4300	0.6	5000	196	16.66	600	1.32
DME60SB	13	24	29	4.17	1.00	4300	0.33	5000	196	16.66	600	1.32
DME60BB	26	24	59	8.33	1.79	4300	0.42	5000	392	55.55	650	1.43

# WITH GEARBOX 6DG

## ● DIMENSIONS Unit mm(inch)

### DME60S6DG



A standard gear head (sold separately) has four holes of 4.5mm (0.177inch) diameter and attached with four bolts of M4 x 45mm. (M4 x 1.77inch)

(WEIGHT 0.95 kg 2.1 lb)

## NOTE:

6DG gearboxes are available for either 4.5mm diameter mounting holes or M4 x 6mm tapped holes. 4.5mm diameter mounting holes type gearboxes are available as stock components. When ordering, please write the motor model and gearbox model numbers separately, as in the following example:  
Pinion Shaft Motor + Gearbox  
DME60S6HPB + 6DG □  
M4 x 6mm tapped mounting hole type gearboxes are available only on demand, and are supplied only as combined unit with motors. When ordering, please write model number as a single unit, as in the following example : DME60S6H □

## ● with 6DG TYPE GEARBOX MOTOR MODEL DME60S6HP☆ & GEARBOX MODEL 6DG □

Model	Gear ratio		5	12.5	15	*25	*30	*50	*75	*100	150	180	250
	Rated speed	r/min	860	344	286	172	143	87.2	60.9	46.8	35	30	21
DME60S6HP☆ & 6DG □	Rated torque	N-m	0.12	0.29	0.35	0.53	0.64	0.98	0.98	0.98	0.98	0.98	0.98
		oz-in	16.66	41.66	49.99	74.99	90.27	138.87	138.87	138.87	138.87	138.87	138.87
Model	Gear ratio		300	450	*500	*750	*900	*1800					
	Rated speed	r/min	17	12	9.8	6.6	5.5	2.7					
DME60S6HP☆ & 6DG □	Rated torque	N-m	0.98	0.98	0.98	0.98	0.98	0.98					
		oz-in	138.87	138.87	138.87	138.87	138.87	138.87					

NOTES 1: On models marked with asterisks (\*), the direction of the gearbox shaft rotation is in reverse of the motor rotation direction.  
2: In notation model number : fill the reduction ratio denominator in the position marked with the box sign □ ; fill the voltage in the position marked with the star sign ☆.

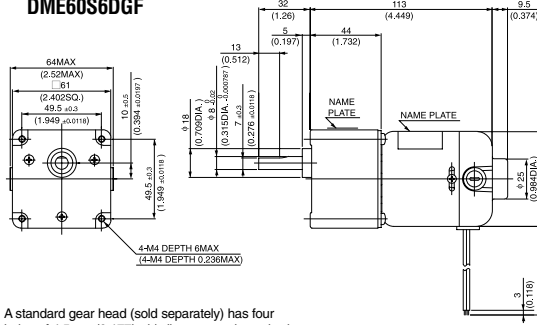
# DME60

## WITH GEARBOX 6DGF



6DGF

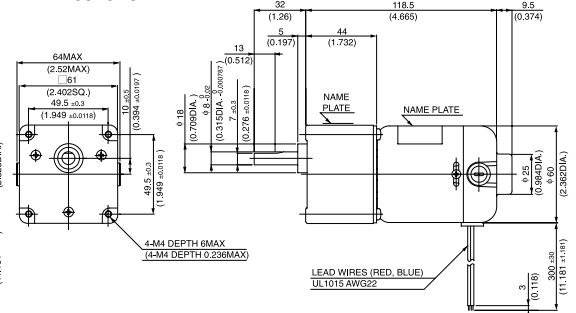
### ● DIMENSIONS Unit mm(inch) DME60S6DGF



A standard gear head (sold separately) has four holes of 4.5mm (0.177inch) diameter and attached with four bolts of M4 x 60mm. (M4 x 2.36inch)

(WEIGHT 1.0 kg 2.2 lb)

### DME60B6DGF



(WEIGHT 1.05 kg 2.3 lb)

### ● with 6DGF TYPE GEARBOX MOTOR MODEL DME60S6HFP☆, DME60B6HFPB & GEARBOX MODEL 6DG□ F

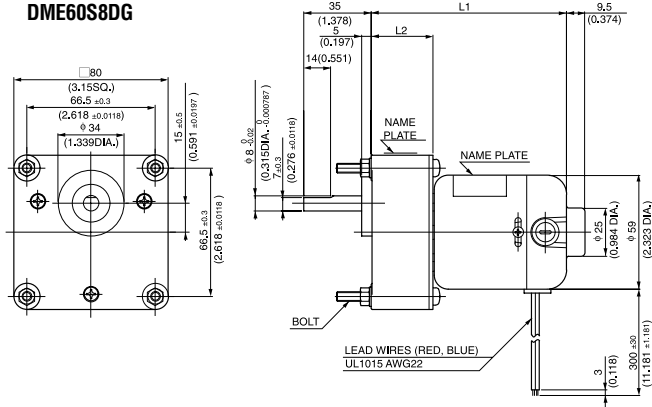
Model	Gear ratio	5										
		Rated speed	r/min	860	344	286	172	143	86	57.3	43	29.4
DME60S6HFP☆ & 6DG□	Rated torque	N-m	0.12	0.27	0.32	0.53	0.64	0.96	1.4	1.9	2.4	2.4
		oz-in	16.66	37.50	45.83	74.99	48.61	136.09	194.42	263.86	347.18	347.18
DME60B6HFPB & 6DG□	Rated speed	r/min	860	344	286	172	143	86	58.7	45	31.3	26.4
		Rated torque	N-m	0.24	0.53	0.64	1.0	1.3	1.9	2.4	2.4	2.4
		oz-in	33.33	74.99	90.27	152.76	180.53	263.86	347.18	347.18	347.18	347.18

## WITH GEARBOX 8DG



8DG

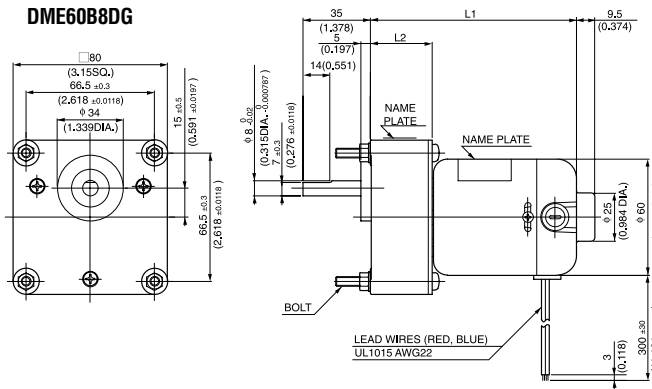
### ● DIMENSIONS Unit mm(inch) DME60S8DG



NOTE :  
When ordering motors with 8DG gearboxes,  
please write the motor model and gearbox model  
numbers as in the following example :  
Motor + Gearbox  
DME60B8HFPB + 8DG□

GEAR RATIO	L1		L2		BOLT		WEIGHT	
	(mm)	(inch)	(mm)	(inch)	(mm)	(inch)	kg	lb
30~150	101	3.98	32	1.26	M5X50	M5X1.969	1.1	2.4
250~1800	111	4.37	42	1.654	M5X60	M5X2.362	1.2	2.6

### DME60B8DG



GEAR RATIO	L1		L2		BOLT		WEIGHT	
	(mm)	(inch)	(mm)	(inch)	(mm)	(inch)	kg	lb
30~150	106.5	4.193	32	1.26	M5X50	M5X1.969	1.15	2.5
250~1800	116.5	4.587	42	1.654	M5X60	M5X2.362	1.25	2.8

NOTES 1: On models marked with asterisks (\*), the direction of the gearbox shaft rotation is in reverse of the motor rotation direction.  
2: In notation model number : fill the reduction ratio denominator in the position marked with the box sign □ ; fill the voltage in the position marked with the star sign ☆.

WITH GEARBOX  
**8DG**

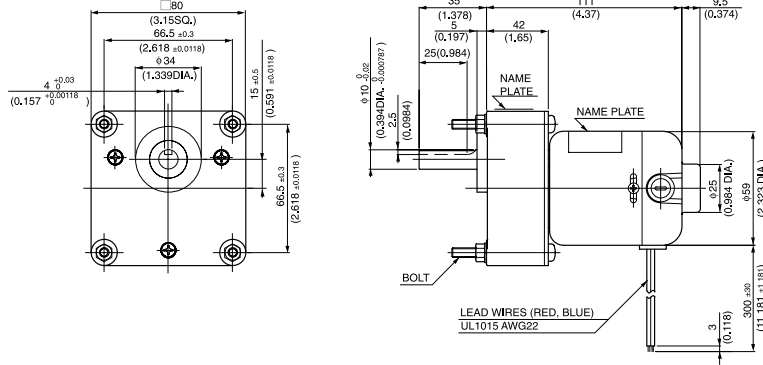
●with 8DG TYPE GEARBOX MOTOR MODEL **DME60S8HP**☆, **DME60B8HPB** & GEARBOX MODEL **8DG**□

Model	Gear ratio		*30	*50	*75	*100	*150	250	300	*500	*750	*1800
	Rated speed	r/min	143	86	57.3	43	28.6	17.7	15.1	9.3	6.4	2.7
<b>DME60S8HP</b> ☆ & <b>8DG</b> □	Rated torque	N-m	0.64	1.0	1.6	2.1	3.2	3.9	3.9	3.9	3.9	3.9
		oz-in	90.27	152.76	222.19	305.52	458.28	555.49	555.49	555.49	555.49	555.49
<b>DME60B8HPB</b> & <b>8DG</b> □	Rated speed	r/min	143	86	57.3	43.6	30.5	18.8	15.8	9.7	6.5	2.7
		Rated torque	N-m	1.3	2.1	3.2	3.9	3.9	3.9	3.9	3.9	3.9
		oz-in	180.53	305.52	458.28	555.49	555.49	555.49	555.49	555.49	555.49	555.49

WITH GEARBOX  
**8DGF**

●DIMENSIONS Unit mm(inch)

**DME60S8DGF**



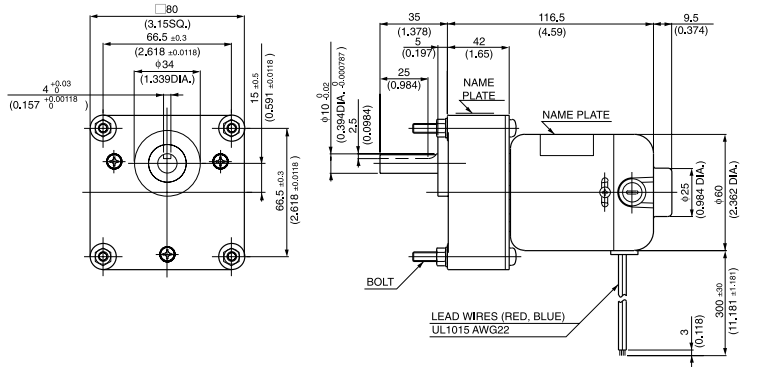
NOTE :  
When ordering motors with 8DGF gearboxes,  
please write the motor model and gearbox model  
numbers as in the following example :  
Motor + Gearbox  
**DME60B8HFPB + 8DG**□F



**8DGF**

GEAR RATIO	BOLT		WEIGHT	
	(mm)	(inch)	kg	lb
25~150	M5X60	M5X2.36	1.20	2.6

**DME60B8DGF**



GEAR RATIO	BOLT		WEIGHT	
	(mm)	(inch)	kg	lb
25~150	M5X60	M5X2.36	1.25	2.8

●with 8DGF TYPE GEARBOX MOTOR MODEL **DME60S8HFP**☆, **DME60B8HFPB** & GEARBOX MODEL **8DG**□F

Model	Gear ratio		*25	*30	50	75	100	150
	Rated speed	r/min	172	143	86	57.3	43	28.6
<b>DME60S8HFP</b> ☆ & <b>8DG</b> □F	Rated torque	N-m	0.53	0.64	0.96	1.4	1.9	2.9
		oz-in	74.99	90.27	152.76	194.42	263.86	402.73
<b>DME60B8HFPB</b> & <b>8DG</b> □F	Rated speed	r/min	172	143	86	57.3	43	28.6
		Rated torque	N-m	1.0	1.3	1.9	2.9	3.8
		oz-in	152.76	180.53	305.52	402.73	541.60	819.34

NOTES 1: On models marked with asterisks (\*), the direction of the gearbox shaft rotation is in reverse of the motor rotation direction.  
2: In notation model number : fill the reduction ratio denominator in the position marked with the box sign □ ; fill the voltage in the position marked with the star sign ☆.