

# Metering Valve with Silencer

## Series ASN2

### Features

- Superior sound reducing performance.
- Cylinder speed easily set.
- Retainer prevents accidental loss of needle.

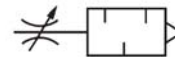


### Specifications

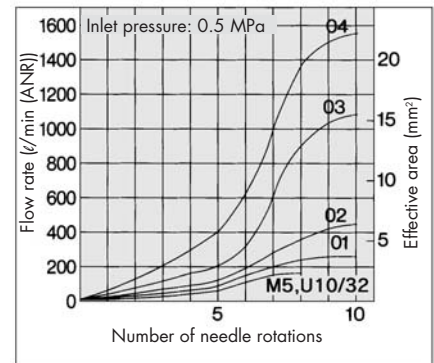
Proof pressure	1.5 MPa
Operating pressure range	0 to 1 MPa
Ambient and fluid temperature	- 5 to 60°C (No freezing)
Number of needle rotations	10 turns (8 turns <sup>Note</sup> )

Note) ( ) is the case of ASN2-M5.

### JIS Symbol



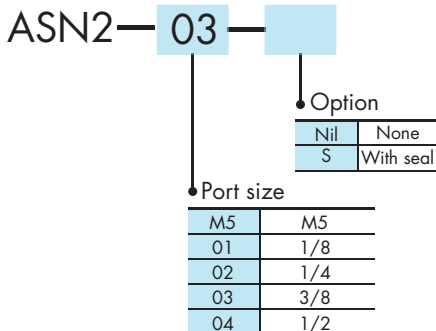
### Needle Valve/ Flow Characteristics



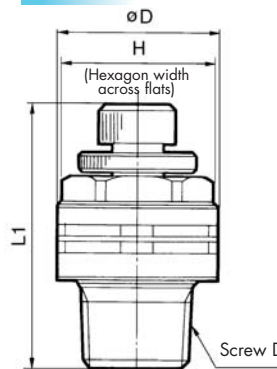
### Model

Model	Port size	Effective area (mm <sup>2</sup> )	Weight (g)
ASN2-M5	M5	1.8	5
ASN2-01	1/8	3.6	17
ASN2-02	1/4	6.5	34
ASN2-03	3/8	16.6	55
ASN2-04	1/2	24.5	107

### How to Order



### Dimensions



Model	Screw D	øD	L1		H
			Min	Max	
ASN2-M5	M5	10	20.5	23.3	8
ASN2-01	1/8	15	30	35	12(12.7)
ASN2-02	1/4	20	34.2	39.2	17(17.5)
ASN2-03	3/8	25	37	42	19
ASN2-04	1/2	30	49	54	24(23.8)

Note) (in parentheses) are the dimensions of "NPT" screw specifications.

Flow Control