

Insulating cover in black PVC, designed to suit Mains Chassis Plugs. Material has good flame retardant properties, and is non-hydroscopic.

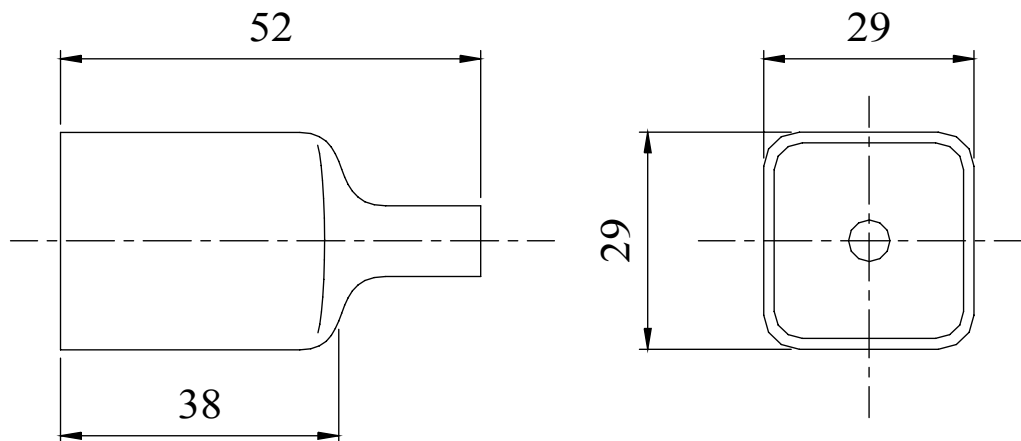
**MATERIAL**  
PVC SPD/717/55 F/R

**COLOUR**  
Black

**APPROVALS**  
UL 94 VO  
Limiting Oxygen Index 25,6 +/- 0,45

**TEMPERATURE RANGE**  
-25OC to +60OC  
(intermittent peaks +80OC)

### Dimensions



WALL THICKNESS TYPICALLY 1.6mm

Tel No. +44(0)1724 273200 Website www.dem-uk.com

PROPRIETARY AND CONFIDENTIAL

THE INFORMATION CONTAINED IN THIS DRAWING IS THE SOLE PROPERTY OF ALPHA 3 MANUFACTURING. ANY REPRODUCTION IN PART OR AS A WHOLE WITHOUT THE WRITTEN PERMISSION OF ALPHA 3 MANUFACTURING IS PROHIBITED.

UNLESS OTHERWISE SPECIFIED:  
DIMENSIONS ARE IN MILLIMETRES  
LINEAR TOLERANCE:  
**NO DECIMAL PLACES ±0.5mm**  
**1 DECIMAL PLACE ±0.25mm**  
**2 DECIMAL PLACES ±0.125mm**  
**ANGULAR TOLERANCE: ±1°**

FINISH

SEE NOTE

DEBURR AND BREAK SHARP EDGES

DRAWN BY

SPB

TITLE

GENERAL SPECIFICATION  
MAINS CONNECTOR  
INSULATING COVER

Alpha3 manufacturing

ROXBURGH EMC

DELTRON Components

DELTRON Enclosures

DEM

DEM Manufacturing, Deltron Emcon House  
Hargreaves Way, Sawcliffe Ind. Park,  
Scunthorpe, North Lincolnshire, DN15 8RF, UK

IF IN DOUBT ASK  
DO NOT SCALE DRAWING

MATERIAL

SEE NOTE

THIRD ANGLE PROJECTION



APPROVED BY

WC

SHEET 1 OF 1

SCALE 1:1

A4

DRAWING NO.

532-0100

ISSUE

04

Release