

**JUMO GmbH & Co. KG**  
Delivery address: Mackenrodtstraße 14,  
36039 Fulda, Germany  
Postal address: 36035 Fulda, Germany  
Phone: +49 661 6003-0  
Fax: +49 661 6003-607  
e-mail: mail@jumo.net  
Internet: www.jumo.net

**JUMO Instrument Co. Ltd.**  
JUMO House  
Temple Bank, Riverway  
Harlow, Essex CM20 2DY, UK  
Phone: +44 1279 635533  
Fax: +44 1279 635262  
e-mail: sales@jumo.co.uk  
Internet: www.jumo.co.uk

**JUMO Process Control, Inc.**  
8 Technology Boulevard  
Canastota, NY 13032, USA  
Phone: 315-697-JUMO  
1-800-554-JUMO  
Fax: 315-697-5867  
e-mail: info@jumo.us  
Internet: www.jumo.us



# JUMO DELOS T

## Electronic temperature switch with display and analog output

- For temperatures from -50 to +260 °C (+500 °C)
- EHEDG certification
- Configuration with the rev transmitter on the temperature switch or the setup program
- M 12x1 plug-connection; protection class IP65 as per DIN EN 60529 with the machine connector inserted

### Brief description

The highly precise, electronic temperature switch comprises a sheath with built-in temperature probe, a process connection as well as an attached case with LCD display for the electronics. Depending on the application, the following output variants are available: 1x PNP or 2x PNP switching output (binary output) or 1x PNP switching output and 1x analog output.

The configuration of the output signal and the measuring range can be customized.

Depending on the version, the electronic temperature switch can be used in an operating temperature range from -50 to +150 °C, -50 to +260 °C and -50 to +500 °C. The analog output signal 4 to 20 mA, 0 to 20 mA, 0 to 10 V or reversed 20 to 4 mA, 20 to 0 mA and 10 to 0 V is available linearized (temperature linear).

The electronic temperature probe is designed for industrial applications and complies with the European Standards to guarantee electromagnetic compatibility (EMC).



Basic type 902940/10

### Technical data

<b>Electrical connection</b>	Machine connector M 12x1, 4-pin as per IEC 60947-5-2
<b>Process connections</b>	Screw connection G 1/4, G 3/8 and G 1/2 Screw connection M 12x1.5; M 18x1.5 and M 20x1.5 Screw connection 1/2-14NPT Union nut G 3/8 Pipe screw connection G 1/4 and G 1/2 Screw connection G 1/2 with CIP-conforming sealing cone and EHEDG certificate Conical port with union nut (milk pipe union) Clamp Spherical welding socket with clamp screw connection Welding socket with CIP-conforming sealing cone Varivent connections with EHEDG certificate JUMO PEKA with EHEDG certificate
<b>Sheath</b>	Stainless steel 316 L Material No. 1.4404/1.4435 Stainless steel 316 Ti Material No. 1.4571
<b>Protection rating</b>	IP65 as per DIN EN 60529 with the machine connector inserted
<b>Response time</b>	t <sub>0,5</sub> : 3 s in water 0.4 m/s t <sub>0,9</sub> : 8 s in water 0.4 m/s
<b>Measuring insert</b>	Pt1000 temperature probe, DIN EN 60751, class A or AA (1/3 DIN B), 4-wire circuit

### Approvals/approval marks (see Technical Data)



**JUMO GmbH & Co. KG**  
 Delivery address: Mackenrodtstraße 14,  
 36039 Fulda, Germany  
 Postal address: 36035 Fulda, Germany  
 Phone: +49 661 6003-0  
 Fax: +49 661 6003-607  
 e-mail: mail@jumo.net  
 Internet: www.jumo.net

**JUMO Instrument Co. Ltd.**  
 JUMO House  
 Temple Bank, Riverway  
 Harlow, Essex CM20 2DY, UK  
 Phone: +44 1279 635533  
 Fax: +44 1279 635262  
 e-mail: sales@jumo.co.uk  
 Internet: www.jumo.co.uk

**JUMO Process Control, Inc.**  
 8 Technology Boulevard  
 Canastota, NY 13032, USA  
 Phone: 315-697-JUMO  
 1-800-554-JUMO  
 Fax: 315-697-5867  
 e-mail: info@jumo.us  
 Internet: www.jumo.us



## Technical data

### General information

<b>Reference conditions</b>	DIN 16086 and DIN EN 60770
<b>Display</b>	positively lit LCD display
Alignment	The display can be mirror-imaged by 180° using the setup program after installation, the display case can be swivelled to the LH or RH side by ± 160° (use the combination tool)
Size	Display 16 x 26 mm / font size 7 mm / 2x 4-digit
Color	Standard operation: amber Error: red (text "Err", error code 1 to 9 flashes) Setup interface occupied: red
Switching status display	K1, K2
Temperature unit	°C or °F
<b>Operation</b>	
on the device	with the rev transmitter beneath the locking screw with combination tool or screwdriver 0.5 x 3 mm or Allen key, width across flats 2
with PC	with the setup program with PC interface

### Input

Measuring input	1x Pt1000 temperature probe, 4-wire circuit
Measuring range	Basic type 902940/10: -50 to +150 °C Basic type 902940/30: -50 to +260 °C Basic type 902940/50: -50 to +500 °C
Limit value deviation	0.15 + 0.002 × t, class A 0.10 + 0.017 × t, class AA (1/3 DIN B)

### Measuring circuit monitoring

Probe short-circuit, probe and cable break, measuring range gone below, measuring range exceeded	Analog output 0 to 20 mA, 0 mA or 22 mA configurable Analog output 4 to 20 mA, 3.4 mA or 22 mA configurable Analog output 0 to 10 V, 0 V or 10.7 V configurable Switching outputs, low Additional error message on the LCD display
---	--

### Outputs

All analog outputs in 3-wire circuit/Open Collector, PNP switching output

<b>Analog output</b> can be freely configured	4 to 20 mA and 1x PNP switching output 0 to 20 mA and 1x PNP switching output 0 to 10 V and 1x PNP switching output
<b>Switching output</b>	
Number	1x PNP switching output 2x PNP switching output
Switching type	N/C / N/O
Switching function	Window / hysteresis
<b>Switching capacity</b>	
- Voltage drop from UB	PNP ≤ 2 V
- Contact rating	ON ≤ 250 mA/OFF ≤ 1 mA
- Switching cycles	> 10 million
Reaction time	at 50 Hz: ≤ 200 ms at 60 Hz: ≤ 320 ms
Short-circuit proof	Yes

**JUMO GmbH & Co. KG**  
 Delivery address: Mackenrodtstraße 14,  
 36039 Fulda, Germany  
 Postal address: 36035 Fulda, Germany  
 Phone: +49 661 6003-0  
 Fax: +49 661 6003-607  
 e-mail: mail@jumo.net  
 Internet: www.jumo.net

**JUMO Instrument Co. Ltd.**  
 JUMO House  
 Temple Bank, Riverway  
 Harlow, Essex CM20 2DY, UK  
 Phone: +44 1279 635533  
 Fax: +44 1279 635262  
 e-mail: sales@jumo.co.uk  
 Internet: www.jumo.co.uk

**JUMO Process Control, Inc.**  
 8 Technology Boulevard  
 Canastota, NY 13032, USA  
 Phone: 315-697-JUMO  
 1-800-554-JUMO  
 Fax: 315-697-5867  
 e-mail: info@jumo.us  
 Internet: www.jumo.us



<b>Load check, current</b> - Period duration - Periodic protection circuitry for overcurrent	2 s; T <sub>ON</sub> 40 ms f = 0.5 Hz LCD display: Err3 switching output K1, Err4 switching output K2
<b>Scaling range</b> Analog output Behavior when the scaling range is gone below Behavior when the scaling range is exceeded	Scaling can be freely selected within the measuring range Analog output 0 to 20 mA, linear drop to 0 mA Analog output 4 to 20 mA, linear drop to 3.8 mA Analog output 0 to 10 V, linear drop to 0 V Analog output 0 to 20 mA, linear increase up to 20.5 mA Analog output 4 to 20 mA, linear increase up to 20.5 mA Analog output 0 to 10 V, linear increase up to 10.2 V
<b>Switching output</b> - Switching point - Release point - Damping - Switch-on delay	Measuring range (> Release point) Measuring range (< Switching point) 0.00 to 99.99 s 0.00 to 99.99 s
<b>Apparent ohmic resistance</b> 4 to 20 mA 0 to 20 mA 0 to 10 V	$R_{I\geq} (U_B - 6.5 \text{ V})/0.022 \text{ A}$ $R_{I\geq} (U_B - 6.5 \text{ V})/0.022 \text{ A}$ $R \geq 10 \text{ k}\Omega$

## Ambient conditions

<b>Admissible temperatures</b> Ambient temperature, display case Ambient temperature Storage temperature	-25 to +75 °C -50 °C; restricted function only stationary use, risk of cable break, LCD display without function -40 to +85 °C
<b>Admissible air humidity</b> - during operation - during storage	100 % including condensation on the device outer case 90 % without condensation
<b>Admissible mechanical load</b> - Vibration resistance - Shock resistance	referring to basic type 902940/10 and 902940/30 with fitting length 100 mm 10 g, 10 to 2000 Hz as per IEC 60068-2-6 50 g for 11 ms / 100 g for 1 ms as per IEC 60068-2-27
Electromagnetic compatibility - emitted interference - interference resistance	(only with 4-pin connection line and ground case) Class A as per EN 61326 Performance characteristic A as per EN 61326
Protection rating	IP65 as per DIN EN 60529
Ambient temperature error	≤ 0.05 %/K

## Auxiliary energy

Voltage supply - for output 0(4) to 20 mA - for output 0 to 10 V	DC 14 to 30 V (nominal voltage supply DC 24 V) Ripple: ensure that the voltage peaks do <b>not</b> exceed or go below the specified values DC 12 to 30 V DC 14 to 30 V
Reverse voltage protection	Yes
Power consumption	≤ 45 mA without load, ≤ 545 mA with load 2x PNP switching output
Electrical connection	Machine connector M 12x1, 4-pin as per IEC 60947-5-2, A-coded
Circuit	SELV
Influence of the voltage supply	≤ 0.02 %/V deviation from DC 24 V

**JUMO GmbH & Co. KG**  
 Delivery address: Mackenrodtstraße 14,  
 36039 Fulda, Germany  
 Postal address: 36035 Fulda, Germany  
 Phone: +49 661 6003-0  
 Fax: +49 661 6003-607  
 e-mail: mail@jumo.net  
 Internet: www.jumo.net

**JUMO Instrument Co. Ltd.**  
 JUMO House  
 Temple Bank, Riverway  
 Harlow, Essex CM20 2DY, UK  
 Phone: +44 1279 635533  
 Fax: +44 1279 635262  
 e-mail: sales@jumo.co.uk  
 Internet: www.jumo.co.uk

**JUMO Process Control, Inc.**  
 8 Technology Boulevard  
 Canastota, NY 13032, USA  
 Phone: 315-697-JUMO  
 1-800-554-JUMO  
 Fax: 315-697-5867  
 e-mail: info@jumo.us  
 Internet: www.jumo.us



### Approval/approval marks

Approval marks	Inspection authority	Certificate/ Inspection number	Inspection basics	valid for
EHEDG	TUM MAK	No. 03/2006	Document No. 8	Process connection 997 JUMO PEKA
EHEDG	TNO	No. C03-5145	Document No. 8	380 Varivent process connection

### Connection diagram

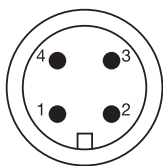
Order code 470		Order code 471		Order codes 475, 476 and 477	
1× PNP switching output		2× PNP switching output		1× PNP switching output and 1× analog output	
Voltage supply		Voltage supply		Voltage supply	
1 L+	DC 14 to 30 V	1 L+	DC 14 to 30 V	1 L+	DC 14 to 30 V
3 L-	GND	3 L-	GND	3 L-	GND
Output		Output		Output	
4 K1	Highside Open Collector max. 0.25 A	2 K2	Highside Open Collector max. 0.25 A	2 analog	0(4) to 20 mA/0 to 10 V
2	nc	4 K1		4 K1	Highside Open Collector max. 0.25 A
5	Interface	5	Interface	5	Interface

<b>Assignment: M 12x1 machine connector</b>	1 bn Brown	4 bk Black	The assignment <b>only</b> applies to A-coded standard cables.
	2 wh White	5 gy Gray	
	3 bu Blue		

Connection to the temperature switch rear.

### Connection diagram (probe)

Machine connector M 12x1, 4-pin as per IEC 60947-5-2



Top view to the machine connector on the corresponding RTD temperature probe.

Electrical connection	Connection assignment
<b>Basic type 902940/50</b>	
RTD temperature probe in 4-wire circuit (input)	

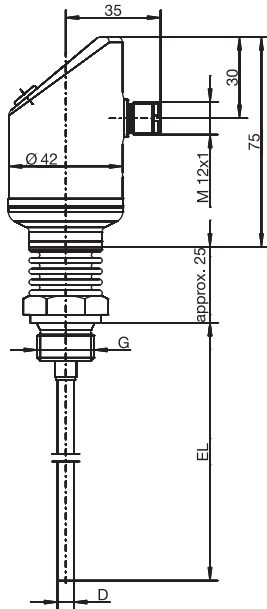
**JUMO GmbH & Co. KG**  
 Delivery address: Mackenrodtstraße 14,  
 36039 Fulda, Germany  
 Postal address: 36035 Fulda, Germany  
 Phone: +49 661 6003-0  
 Fax: +49 661 6003-607  
 e-mail: mail@jumo.net  
 Internet: www.jumo.net

**JUMO Instrument Co. Ltd.**  
 JUMO House  
 Temple Bank, Riverway  
 Harlow, Essex CM20 2DY, UK  
 Phone: +44 1279 635533  
 Fax: +44 1279 635262  
 e-mail: sales@jumo.co.uk  
 Internet: www.jumo.co.uk

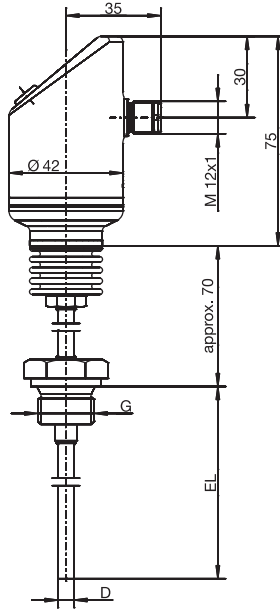
**JUMO Process Control, Inc.**  
 8 Technology Boulevard  
 Canastota, NY 13032, USA  
 Phone: 315-697-JUMO  
 1-800-554-JUMO  
 Fax: 315-697-5867  
 e-mail: info@jumo.us  
 Internet: www.jumo.us



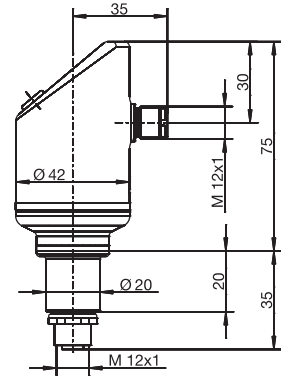
## Dimensions



Basic type 902940/10

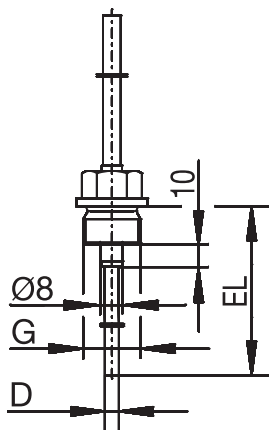


Basic type 902940/30  
with neck pipe



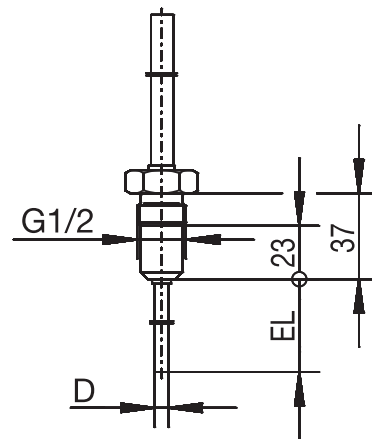
Basic type 902940/50  
with M 12x1 connection  
for RTD temperature probes

## PA process connection dimensions



PA	G
103	3/8
104	1/2

Screw connection



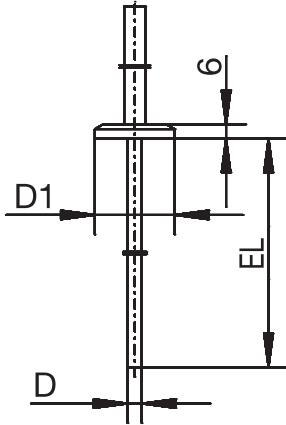
PA	
380	

Screw connection with CIP-conforming sealing cone

**JUMO GmbH & Co. KG**  
 Delivery address: Mackenrodtstraße 14,  
 36039 Fulda, Germany  
 Postal address: 36035 Fulda, Germany  
 Phone: +49 661 6003-0  
 Fax: +49 661 6003-607  
 e-mail: mail@jumo.net  
 Internet: www.jumo.net

**JUMO Instrument Co. Ltd.**  
 JUMO House  
 Temple Bank, Riverway  
 Harlow, Essex CM20 2DY, UK  
 Phone: +44 1279 635533  
 Fax: +44 1279 635262  
 e-mail: sales@jumo.co.uk  
 Internet: www.jumo.co.uk

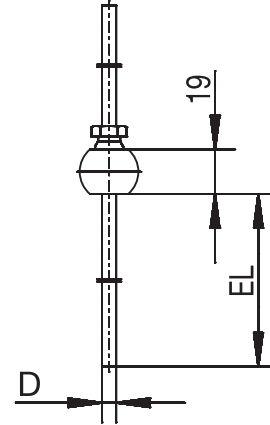
**JUMO Process Control, Inc.**  
 8 Technology Boulevard  
 Canastota, NY 13032, USA  
 Phone: 315-697-JUMO  
 1-800-554-JUMO  
 Fax: 315-697-5867  
 e-mail: info@jumo.us  
 Internet: www.jumo.us



PA	DN	D1
-	-	∅ 25
611	10/20	∅ 34
613	25/1"	∅ 50.5

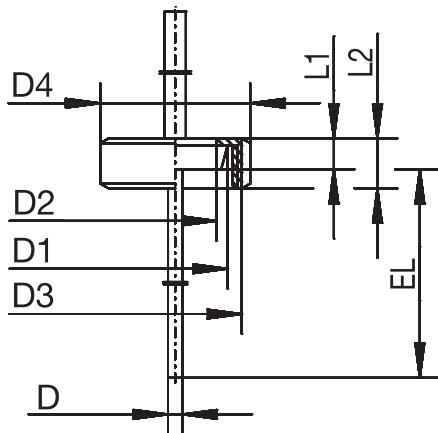
PA	DN	D1
613	40/1.5"	∅ 50.5
616	50/2"	∅ 64
617	2.5"	∅ 77.5

Clamp as per DIN 32676



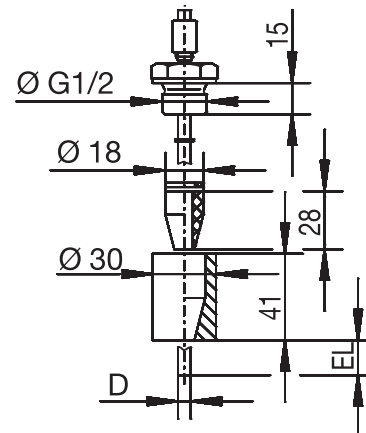
PA	
681	

Spherical welding socket with clamping screws



PA	DN	D1	D2	D3	D4	L1	L2
601	10	∅ 22	∅ 18	RD 28x1/8	∅ 38	9	18
604	25	∅ 44	∅ 35	RD 52x1/6	∅ 63	13	21
605	32	∅ 50	∅ 41	RD 58x1/6	∅ 70	13	21

Clamp with union nut as per DIN 11851 (milk pipe union)



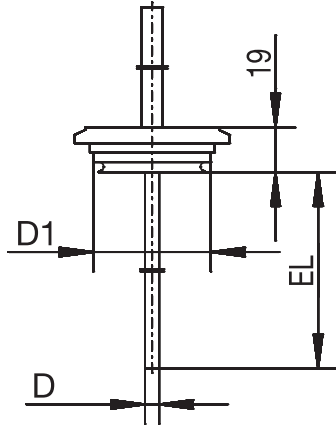
PA	
682	

Welding socket with CIP-conforming sealing cone

**JUMO GmbH & Co. KG**  
 Delivery address: Mackenrodtstraße 14,  
 36039 Fulda, Germany  
 Postal address: 36035 Fulda, Germany  
 Phone: +49 661 6003-0  
 Fax: +49 661 6003-607  
 e-mail: mail@jumo.net  
 Internet: www.jumo.net

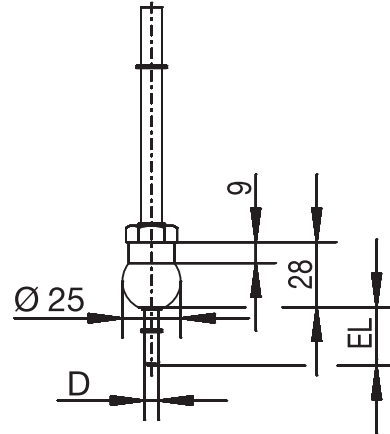
**JUMO Instrument Co. Ltd.**  
 JUMO House  
 Temple Bank, Riverway  
 Harlow, Essex CM20 2DY, UK  
 Phone: +44 1279 635533  
 Fax: +44 1279 635262  
 e-mail: sales@jumo.co.uk  
 Internet: www.jumo.co.uk

**JUMO Process Control, Inc.**  
 8 Technology Boulevard  
 Canastota, NY 13032, USA  
 Phone: 315-697-JUMO  
 1-800-554-JUMO  
 Fax: 315-697-5867  
 e-mail: info@jumo.us  
 Internet: www.jumo.us



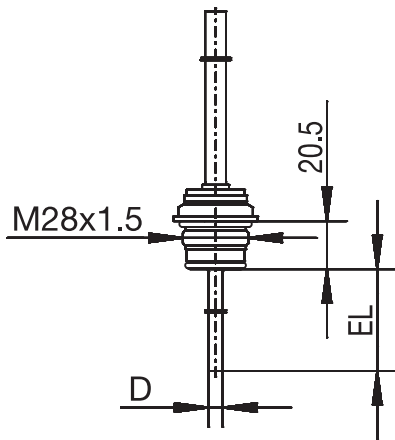
PA	DN	D1
684	15/10	∅ 31
685	32/25	∅ 50
686	50/40	∅ 68

Varivent connection



PA	
681	

Spherical welding socket



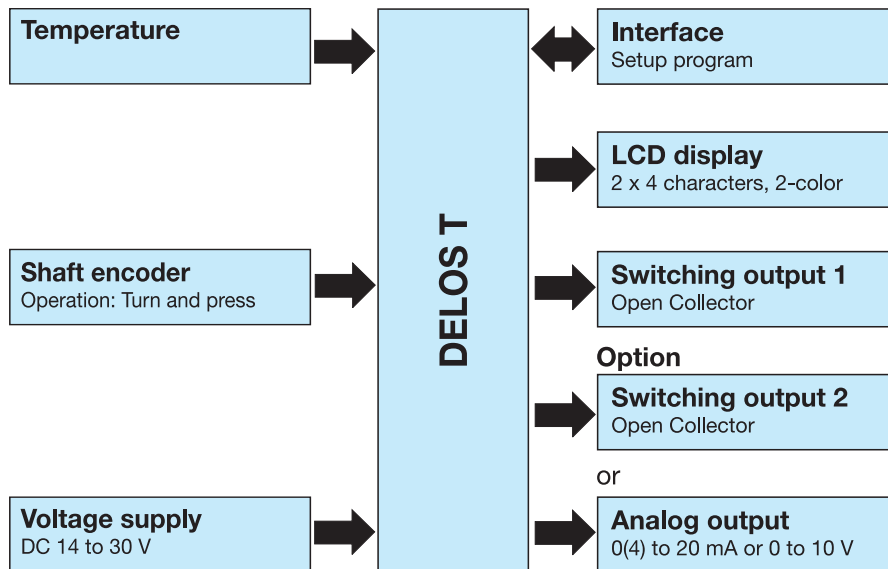
Varivent	Clamp	Aseptic	Welding socket
DN 25/32	DN 25/32/40	DN 40	∅ 55 mm
DN 40-125	DN 50	DN 50	-
-	-	NKS DN 40	-

JUMO PEKA PA 997

Process connection adapter, see data and price sheet 40.9711



## Block diagram



## Special features

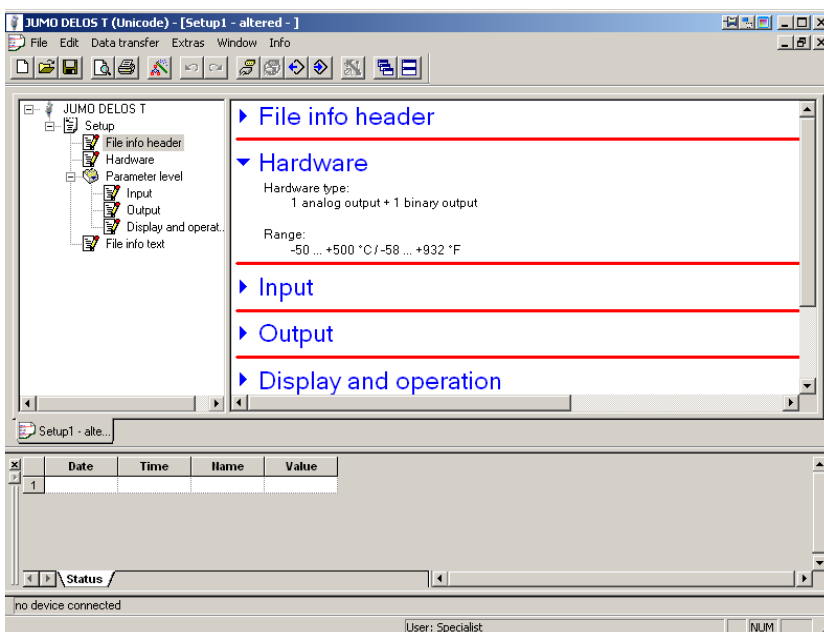
- Measuring range can be freely scaled
- 2-color LCD display with alarm function
- Analog output configurable
- up to 500 °C medium temperature
- programmable on the device or with the setup program

## Setup program

The setup program (accessories) serves to configure the temperature switch with a PC. The configuration data can be archived and printed on the PC.

The setup program can be used to overwrite changed parameters with the factory setting at any time.

The connection between temperature switch and PC is established using a PC interface (USB/ TTL converter) with adapter (USB connection line) and connection line (Y cable).





**JUMO GmbH & Co. KG**  
 Delivery address: Mackenrodtstraße 14,  
 36039 Fulda, Germany  
 Postal address: 36035 Fulda, Germany  
 Phone: +49 661 6003-0  
 Fax: +49 661 6003-607  
 e-mail: mail@jumo.net  
 Internet: www.jumo.net

**JUMO Instrument Co. Ltd.**  
 JUMO House  
 Temple Bank, Riverway  
 Harlow, Essex CM20 2DY, UK  
 Phone: +44 1279 635533  
 Fax: +44 1279 635262  
 e-mail: sales@jumo.co.uk  
 Internet: www.jumo.co.uk

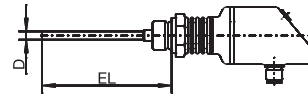
**JUMO Process Control, Inc.**  
 8 Technology Boulevard  
 Canastota, NY 13032, USA  
 Phone: 315-697-JUMO  
 1-800-554-JUMO  
 Fax: 315-697-5867  
 e-mail: info@jumo.us  
 Internet: www.jumo.us



## Order details

### (1) Basic type

902940/10 DELOS T  
 Electronic temperature switch  
 with display and analog output  
 Ambient temperature on the display case: -20 to +75 °C  
 Parts coming into contact with the medium are electro-polished,  
 roughness depth Ra ≤ 0.8 μm



### (2) Version

- x 8 Standard, with factory settings
- x 9 Customer-specific configuration (specifications in plain text)

### (3) Operating temperature in °C

- x 370 -50 to +150 °C

### (4) Measuring insert

- x 1013 1x Pt1000 in 4-wire circuit

### (5) Tolerance class as per DIN EN 60751

- x 2 Class A (standard)
- x 3 Class AA (1/3 DIN B)

### (6) Output

- x 470 1x PNP switching output
- x 471 2x PNP switching output
- x 475 1x PNP switching output and 1x analog output 4 to 20 mA, configurable
- x 476 1x PNP switching output and 1x analog output 0 to 20 mA, configurable
- x 477 1x PNP switching output and 1x analog output 0 to 10 V, configurable

### (7) Sheath diameter D in mm

- x 6 Ø 6 mm

### (8) Fitting length EL in mm (EL 50 to 1000 mm)

- x 50 50 mm
- x 100 100 mm
- x 150 150 mm
- x ... Please specify in plain text (50 mm steps)

### (9) Process connection PA

- x 000 None (plain sheath made of stainless steel 316L)
- x 102 Screw connection G 1/4 (stainless steel 316Ti)
- x 103 Screw connection G 3/8 (stainless steel 316Ti)
- x 104 Screw connection G 1/2 (stainless steel 316Ti)
- x 118 Screw connection M 12x1.5 (stainless steel 316Ti)
- x 126 Screw connection M 18x1.5 (stainless steel 316Ti)

**JUMO GmbH & Co. KG**  
 Delivery address: Mackenrodtstraße 14,  
 36039 Fulda, Germany  
 Postal address: 36035 Fulda, Germany  
 Phone: +49 661 6003-0  
 Fax: +49 661 6003-607  
 e-mail: mail@jumo.net  
 Internet: www.jumo.net

**JUMO Instrument Co. Ltd.**  
 JUMO House  
 Temple Bank, Riverway  
 Harlow, Essex CM20 2DY, UK  
 Phone: +44 1279 635533  
 Fax: +44 1279 635262  
 e-mail: sales@jumo.co.uk  
 Internet: www.jumo.co.uk

**JUMO Process Control, Inc.**  
 8 Technology Boulevard  
 Canastota, NY 13032, USA  
 Phone: 315-697-JUMO  
 1-800-554-JUMO  
 Fax: 315-697-5867  
 e-mail: info@jumo.us  
 Internet: www.jumo.us



- x 128 Screw connection M 20x1.5 (stainless steel 316Ti)
- x 144 Screw connection 1/2-14NPT (stainless steel 316Ti)
- x 163 Union nut G 3/8 (stainless steel 316Ti)
- x 380 Screw connection G 1/2 with CIP-conforming sealing cone and EHEDG certificate (stainless steel 316L)
- x 601 Conical port with union nut DN 10 DIN 11851 (milk pipe union) (stainless steel 316L)
- x 604 Conical port with union nut DN 25 DIN 11851 (milk pipe union) (stainless steel 316L)
- x 605 Conical port with union nut DN 32 DIN 11851 (milk pipe union) (stainless steel 316L)
- x 613 Clamp DN 25/40 (1"/1.5") DIN 32676 (stainless steel 316L)
- x 616 Clamp DN 50 (2") DIN 32676 (stainless steel 316L)
- x 617 Clamp 2.5" similar to DIN 32676 (stainless steel 316L)
- x 681 Spherical welding socket with clamp screw connection (stainless steel 316L)
- x 682 Welding socket with CIP-conforming sealing cone (stainless steel 316L)
- x 685 Varivent connection DN 32/25 with EHEDG certificate (stainless steel 316L)
- x 686 Varivent connection DN 50/40 with EHEDG certificate (stainless steel 316L)
- x 840 Spherical welding sleeve (stainless steel 316Ti)
- x 997 JUMO PEKA with EHEDG certificate (stainless steel 316L)  
 (compatible process connection adapter, see data sheet 40.9711)

**(10) Extra codes**

- x 000 None
- x 310 Sheath  $\varnothing$  6 mm stepped down to  $\varnothing$  3.8 mm (fitting length EL max. 800 mm)
- x 810 Welding socket (only for process connection 380)

**Order code**      (1)      (2)      (3)      (4)      (5)      (6)      (7)      (8)      (9)      (10)  
 [ ] - [ ] - [ ] - [ ] - [ ] - [ ] - [ ] - [ ] - [ ] / [ ] , ...<sup>a</sup>  
**Order example**      902940/10   -   8   -   370   -   1013   -   2   -   475   -   6   -   50   -   000   /   000

<sup>a</sup> State extra codes one after another, separated by commas.

**JUMO GmbH & Co. KG**  
 Delivery address: Mackenrodtstraße 14,  
 36039 Fulda, Germany  
 Postal address: 36035 Fulda, Germany  
 Phone: +49 661 6003-0  
 Fax: +49 661 6003-607  
 e-mail: mail@jumo.net  
 Internet: www.jumo.net

**JUMO Instrument Co. Ltd.**  
 JUMO House  
 Temple Bank, Riverway  
 Harlow, Essex CM20 2DY, UK  
 Phone: +44 1279 635533  
 Fax: +44 1279 635262  
 e-mail: sales@jumo.co.uk  
 Internet: www.jumo.co.uk

**JUMO Process Control, Inc.**  
 8 Technology Boulevard  
 Canastota, NY 13032, USA  
 Phone: 315-697-JUMO  
 1-800-554-JUMO  
 Fax: 315-697-5867  
 e-mail: info@jumo.us  
 Internet: www.jumo.us



## Scope of delivery

1 device in the version ordered
1 combination tool (required for operation on the device and after installation to turn the display case through $\pm 160^\circ$ to the LH or RH side)
1 operating instructions B 90.2940.0

## Accessories for process connection

Article	Part No.
Pipe screw connection G 1/4 (stainless steel 316Ti) for sheath screw connections	90/00080811
Pipe screw connection G 1/2 (stainless steel 316Ti) for sheath screw connections	90/00305445

## Accessories

Article	Part No.
Setup program on CD-ROM, multilingual	90/00550018
Connection line (Y cable) (required for the configuration with the setup program)	40/00507861
Combination tool (required for operation on the device and after installation to turn the display case through $\pm 160^\circ$ to the LH or RH side)	40/00526614
Cable box, 4-pin (straight) M 12x1 with PVC connection line length 2000 mm (can be used for individual assembling)	40/00404585
Cable box, 4-pin (angled) M 12x1 with PVC connection line length 2000 mm (can be used for individual assembling)	40/00409334
PC interface with USB/TTL converter and adapter (USB connection line) (required for the configuration with the setup program)	70/00456352

## Stock versions

Order code	Part No.
902940/10-8-370-1013-2-475-6-50-104/000	90/00552544
902940/10-8-370-1013-2-475-6-100-104/000	90/00550991
902940/10-8-370-1013-2-475-6-150-104/000	90/00552545
902940/10-8-370-1013-2-475-6-200-104/000	90/00552547
902940/10-8-370-1013-2-475-6-150-000/000	90/00551003

**JUMO GmbH & Co. KG**  
 Delivery address: Mackenrodtstraße 14,  
 36039 Fulda, Germany  
 Postal address: 36035 Fulda, Germany  
 Phone: +49 661 6003-0  
 Fax: +49 661 6003-607  
 e-mail: mail@jumo.net  
 Internet: www.jumo.net

**JUMO Instrument Co. Ltd.**  
 JUMO House  
 Temple Bank, Riverway  
 Harlow, Essex CM20 2DY, UK  
 Phone: +44 1279 635533  
 Fax: +44 1279 635262  
 e-mail: sales@jumo.co.uk  
 Internet: www.jumo.co.uk

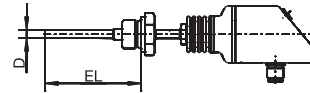
**JUMO Process Control, Inc.**  
 8 Technology Boulevard  
 Canastota, NY 13032, USA  
 Phone: 315-697-JUMO  
 1-800-554-JUMO  
 Fax: 315-697-5867  
 e-mail: info@jumo.us  
 Internet: www.jumo.us



## Order details

### (1) Basic type

902940/30 DELOS T  
 Electronic temperature switch  
 with display and analog output  
 with neck pipe for higher medium temperatures  
 Ambient temperature on the display case: -20 to +75 °C  
 Parts coming into contact with the medium are electro-polished,  
 roughness depth Ra ≤ 0.8 μm



### (2) Version

- x 8 Standard, with factory settings
- x 9 Customer-specific configuration (specifications in plain text)

### (3) Operating temperature in °C

- x 386 -50 to +260 °C

### (4) Measuring insert

- x 1013 1x Pt1000 in 4-wire circuit

### (5) Tolerance class as per DIN EN 60751

- x 2 Class A (standard)
- x 3 Class AA (1/3 DIN B)

### (6) Output

- x 470 1x PNP switching output
- x 471 2x PNP switching output
- x 475 1x PNP switching output and 1x analog output 4 to 20 mA, configurable
- x 476 1x PNP switching output and 1x analog output 0 to 20 mA, configurable
- x 477 1x PNP switching output and 1x analog output 0 to 10 V, configurable

### (7) Sheath diameter D in mm

- x 6 Ø 6 mm

### (8) Fitting length EL in mm (EL 50 to 1000 mm)

- x 50 50 mm
- x 100 100 mm
- x ... Please specify in plain text (50 mm steps)

### (9) Process connection PA

- x 000 None (plain sheath made of stainless steel 316L)
- x 102 Screw connection G 1/4 (stainless steel 316Ti)
- x 103 Screw connection G 3/8 (stainless steel 316Ti)
- x 104 Screw connection G 1/2 (stainless steel 316Ti)
- x 118 Screw connection M 12x1.5 (stainless steel 316Ti)
- x 126 Screw connection M 18x1.5 (stainless steel 316Ti)

**JUMO GmbH & Co. KG**  
 Delivery address: Mackenrodtstraße 14,  
 36039 Fulda, Germany  
 Postal address: 36035 Fulda, Germany  
 Phone: +49 661 6003-0  
 Fax: +49 661 6003-607  
 e-mail: mail@jumo.net  
 Internet: www.jumo.net

**JUMO Instrument Co. Ltd.**  
 JUMO House  
 Temple Bank, Riverway  
 Harlow, Essex CM20 2DY, UK  
 Phone: +44 1279 635533  
 Fax: +44 1279 635262  
 e-mail: sales@jumo.co.uk  
 Internet: www.jumo.co.uk

**JUMO Process Control, Inc.**  
 8 Technology Boulevard  
 Canastota, NY 13032, USA  
 Phone: 315-697-JUMO  
 1-800-554-JUMO  
 Fax: 315-697-5867  
 e-mail: info@jumo.us  
 Internet: www.jumo.us



- x 128 Screw connection M 20x1.5 (stainless steel 316Ti)
- x 144 Screw connection 1/2-14NPT (stainless steel 316Ti)
- x 163 Union nut G 3/8 (stainless steel 316Ti)
- x 380 Screw connection G 1/2 with CIP-conforming sealing cone and EHEDG certificate (stainless steel 316L)
- x 601 Conical port with union nut DN 10 DIN 11851 (milk pipe union) (stainless steel 316L)
- x 604 Conical port with union nut DN 25 DIN 11851 (milk pipe union) (stainless steel 316L)
- x 605 Conical port with union nut DN 32 DIN 11851 (milk pipe union) (stainless steel 316L)
- x 611 Clamp DN 10/20 DIN 32676 (stainless steel 316L)
- x 613 Clamp DN 25/40 (1"/1.5") DIN 32676 (stainless steel 316L)
- x 616 Clamp DN 50 (2") DIN 32676 (stainless steel 316L)
- x 617 Clamp 2.5" similar to DIN 32676 (stainless steel 316L)
- x 681 Spherical welding socket with clamp screw connection (stainless steel 316L)
- x 682 Welding socket with CIP-conforming sealing cone (stainless steel 316L)
- x 684 Varivent connection DN 15/10 with EHEDG certificate (stainless steel 316L)
- x 685 Varivent connection DN 32/25 with EHEDG certificate (stainless steel 316L)
- x 686 Varivent connection DN 50/40 with EHEDG certificate (stainless steel 316L)
- x 840 Spherical welding sleeve (stainless steel 316Ti)
- x 997 JUMO PEKA with EHEDG certificate (stainless steel 316L)  
 (compatible process connection adapter, see data sheet 40.9711)

**(10) Extra codes**

- x 000 None
- x 310 Sheath Ø 6 mm stepped down to Ø 3.8 mm (fitting length EL max. 700 mm)
- x 810 Welding socket (only for process connection 380)

**Order code**      (1)      (2)      (3)      (4)      (5)      (6)      (7)      (8)      (9)      (10)  
 [ ] - [ ] - [ ] - [ ] - [ ] - [ ] - [ ] - [ ] - [ ] / [ ] , ...<sup>a</sup>  
**Order example**      902940/30      -      8      -      386      -      1013      -      2      -      475      -      6      -      50      -      102      /      000

<sup>a</sup> State extra codes one after another, separated by commas.

**JUMO GmbH & Co. KG**  
 Delivery address: Mackenrodtstraße 14,  
 36039 Fulda, Germany  
 Postal address: 36035 Fulda, Germany  
 Phone: +49 661 6003-0  
 Fax: +49 661 6003-607  
 e-mail: mail@jumo.net  
 Internet: www.jumo.net

**JUMO Instrument Co. Ltd.**  
 JUMO House  
 Temple Bank, Riverway  
 Harlow, Essex CM20 2DY, UK  
 Phone: +44 1279 635533  
 Fax: +44 1279 635262  
 e-mail: sales@jumo.co.uk  
 Internet: www.jumo.co.uk

**JUMO Process Control, Inc.**  
 8 Technology Boulevard  
 Canastota, NY 13032, USA  
 Phone: 315-697-JUMO  
 1-800-554-JUMO  
 Fax: 315-697-5867  
 e-mail: info@jumo.us  
 Internet: www.jumo.us



## Scope of delivery

1 device in the version ordered
1 combination tool (required for operation on the device and after installation to turn the display case through $\pm 160^\circ$ to the LH or RH side)
1 operating instructions B 90.2940.0

## Accessories for process connection

Article	Part No.
Pipe screw connection G 1/4 (stainless steel 316Ti) for sheath screw connections	90/00080811
Pipe screw connection G 1/2 (stainless steel 316Ti) for sheath screw connections	90/00305445

## Accessories

Article	Part No.
Setup program on CD-ROM, multilingual	90/00550018
Connection line (Y cable) (required for the configuration with the setup program)	40/00507861
Combination tool (required for operation on the device and after installation to turn the display case through $\pm 160^\circ$ to the LH or RH side)	40/00526614
Cable box, 4-pin (straight) M 12x1 with PVC connection line length 2000 mm (can be used for individual assembling)	40/00404585
Cable box, 4-pin (angled) M 12x1 with PVC connection line length 2000 mm (can be used for individual assembling)	40/00409334
PC interface with USB/TTL converter and adapter (USB connection line) (required for the configuration with the setup program)	70/00456352

**JUMO GmbH & Co. KG**  
 Delivery address: Mackenrodtstraße 14,  
 36039 Fulda, Germany  
 Postal address: 36035 Fulda, Germany  
 Phone: +49 661 6003-0  
 Fax: +49 661 6003-607  
 e-mail: mail@jumo.net  
 Internet: www.jumo.net

**JUMO Instrument Co. Ltd.**  
 JUMO House  
 Temple Bank, Riverway  
 Harlow, Essex CM20 2DY, UK  
 Phone: +44 1279 635533  
 Fax: +44 1279 635262  
 e-mail: sales@jumo.co.uk  
 Internet: www.jumo.co.uk

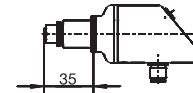
**JUMO Process Control, Inc.**  
 8 Technology Boulevard  
 Canastota, NY 13032, USA  
 Phone: 315-697-JUMO  
 1-800-554-JUMO  
 Fax: 315-697-5867  
 e-mail: info@jumo.us  
 Internet: www.jumo.us



## Order details

### (1) Basic type

902940/50 DELOS T  
 Electronic temperature switch  
 with display and analog output  
 and M 12x1 connection for RTD temperature probes  
 Ambient temperature on the display case: -20 to +75 °C



### (2) Version

- x 8 Standard, with factory settings
- x 9 Customer-specific configuration (specifications in plain text)

### (3) Operating temperature in °C

- x 408 -50 to +500 °C

### (4) Measuring input

- x 1013 1x Pt1000 in 4-wire circuit

### (5) Tolerance class as per DIN EN 60751

- x 0 None (not relevant)

### (6) Output

- x 470 1x PNP switching output
- x 471 2x PNP switching output
- x 475 1x PNP switching output and 1x analog output 4 to 20 mA, configurable
- x 476 1x PNP switching output and 1x analog output 0 to 20 mA, configurable
- x 477 1x PNP switching output and 1x analog output 0 to 10 V, configurable

### (7) Sheath diameter D in mm

- x 0 None (not relevant)

### (8) Fitting length EL in mm

- x 000 None (not relevant)

### (9) Process connection PA

- x 000 None (not relevant)

### (10) Extra codes

- x 000 None

	(1)	(2)	(3)	(4)	(5)	(6)	(7)	(8)	(9)	(10)
Order code										
Order example	902940/50	- 8	- 408	- 1013	- 0	- 475	- 0	- 000	- 000	/ 000

**JUMO GmbH & Co. KG**

Delivery address: Mackenrodtstraße 14,  
36039 Fulda, Germany  
Postal address: 36035 Fulda, Germany  
Phone: +49 661 6003-0  
Fax: +49 661 6003-607  
e-mail: mail@jumo.net  
Internet: www.jumo.net

**JUMO Instrument Co. Ltd.**

JUMO House  
Temple Bank, Riverway  
Harlow, Essex CM20 2DY, UK  
Phone: +44 1279 635533  
Fax: +44 1279 635262  
e-mail: sales@jumo.co.uk  
Internet: www.jumo.co.uk

**JUMO Process Control, Inc.**

8 Technology Boulevard  
Canastota, NY 13032, USA  
Phone: 315-697-JUMO  
1-800-554-JUMO  
Fax: 315-697-5867  
e-mail: info@jumo.us  
Internet: www.jumo.us



## Scope of delivery

1 device in the version ordered
1 combination tool (required for operation on the device and after installation to turn the display case through $\pm 160^\circ$ to the LH or RH side)
1 operating instructions B 90.2940.0

## Accessories

Article	Part No.
Setup program on CD-ROM, multilingual	90/00550018
Connection line (Y cable) (required for the configuration with the setup program)	40/00507861
Combination tool (required for operation on the device and after installation to turn the display case through $\pm 160^\circ$ to the LH or RH side)	40/00526614
Cable box, 4-pin (straight) M 12x1 with PVC connection line length 2000 mm (can be used for individual assembling)	40/00404585
Cable box, 4-pin (angled) M 12x1 with PVC connection line length 2000 mm (can be used for individual assembling)	40/00409334
PC interface with USB/TTL converter and adapter (USB connection line) (required for the configuration with the setup program)	70/00456352
Machine connector M12x1, 4-pin as per IEC 60 947-5-2	90/00404727
Wall holder for DELOS T with M 12x1 connector	90/00555129
<b>Push-in RTD temperature probe with Pt1000 temperature probe and machine connector M 12x1</b>	
902150/99-386-1013-2-6-100-56-2500/315 Sheath diameter 6 mm, fitting length 100 mm, connection cable length 2500 mm	90/00551310
902150/99-386-1013-2-6-200-56-2500/315 Sheath diameter 6 mm, fitting length 200 mm, connection cable length 2500 mm	90/00551311
<b>Note:</b> For pipe screw connections and flanges refer to data sheet 90.9750 (90.9725)	

## Stock version

Order code	Part No.
902940/50-8-408-1013-0-475-0-000-000/000	90/00551004