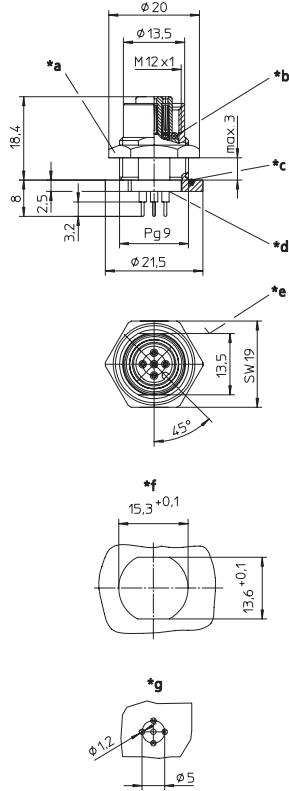


**RKHL /S 5,5**

**0986 EFC 152**

Einbausteckverbinder, M12-Kupplung für die Hinterwandmontage, Printkontakte, einbauseitig PG 9-Verschraubung (Befestigung über RSKF 9)  
0986 EFC 152: 4-polig, D-codiert

Receptacle connector, M12 female connector for rear mounting, printed contacts, chassis side thread PG 9 (panel nut RSKF 9)  
0986 EFC 152: 4 poles, D coding

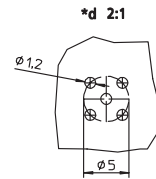
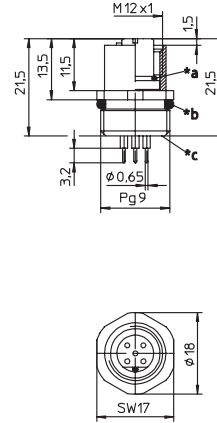


- \*a Mutter nut
- \*b O-Ring O-ring
- \*c O-Ring O-ring
- \*d Leiteranschlussbereich vergossen solder contacts potted with epoxy
- \*e Verdrehschutz anti-rotation protection
- \*f Einbauöffnung für Verdrehschutz cut out for anti-rotation
- \*g Lochbild in der Leiterplatte hole pattern in printed circuit board

**0976 PFC 152**

Einbausteckverbinder, M12-Kupplung für die Frontmontage, 5-polig, B-codiert, Printkontakte, einbauseitig PG 9-Verschraubung – besonders geeignet für Profibus –

Receptacle connector, M12 female connector for front mounting, 5 poles, B coding, printed contacts, chassis side thread PG 9 – especially suitable for Profibus –



- \*a O-Ring O-ring
- \*b O-Ring lose beigestellt O-ring loose enclosed
- \*c Leiteranschlussbereich vergossen solder contacts potted with epoxy
- \*d Lochbild in der Leiterplatte hole pattern in printed circuit board

**Pinbelegung  
Pin assignment**

**4-polig  
4 poles**



**4-polig D-codiert  
4 poles D coding**



**5-polig  
5 poles**












**5-polig B-codiert  
5 poles B coding**



**8-polig  
8 poles**



Technische Daten		Technical data	
<b>Umgebungstemperatur</b>	RKHL: -25°C / +80°C 0986 EFC 152: -30°C / +80°C 0976 PFC 152: -25°C / +90°C	<b>Operating temperature range</b>	RKHL: -25°C / +80°C 0986 EFC 152: -30°C / +80°C 0976 PFC 152: -25°C / +90°C
<b>Werkstoffe</b>		<b>Materials</b>	
Gehäuse / Griffkörper Kontaktträger	CuZn, vernickelt RKHL / 0986 EFC 152: PA 0976 PFC 152: TPU, selbstverlöschend	Housing / Molded body Insert	CuZn, nickel-plated RKHL / 0986 EFC 152: PA 0976 PFC 152: TPU, self-extinguishing
Kontakt	CuZn, unternickelt und 0,8 µm vergoldet	Contact	CuZn, pre-nickelated and 0.8 microns gold-plated
O-Ring	FKM	O-ring	FKM
<b>Mechanische Daten</b>		<b>Mechanical data</b>	
Schutzart	IP 67 Nur im verschraubten Zustand mit den dazugehörigen Gegenstücken.	Degree of protection	IP 67 Only in locked position with its proper counterparts.
Anschlussart	Printlötung	Mode of connection	printed circuit board mount
<b>Elektrische Daten</b>		<b>Electrical data</b>	
Durchgangswiderstand	≤ 5 mΩ	Contact resistance	≤ 5 mΩ
Nennstrom bei 40°C	4- bis 5-polig 4 A 8-polig 2 A	Nominal current at 40°C	4–5 poles 4 A 8 poles 2 A
Nennspannung	RKHL / 0986 EFC 152: 4-polig 240 V; 5- bis 8-polig 60 V bei gekapseltem Einbau	Nominal voltage	RKHL / 0986 EFC 152: 4 poles 240 V; 5–8 poles 60 V encapsulated
Bemessungsspannung	0976 PFC 152: 30 V 4-polig 250 V; 5- bis 8-polig 63 V (nur RKHL / 0986 EFC 152)	Rated voltage	0976 PFC 152: 30 V 4 poles 250 V; 5–8 poles 63 V (only RKHL / 0986 EFC 152)
Prüfspannung	4-polig 2,0 kV eff. / 60 s 5- bis 8-polig 1,5 kV eff. / 60 s	Test voltage	4 poles 2.0 kV eff. / 60 s 5–8 poles 1.5 kV eff. / 60 s
Isolationswiderstand	> 10 <sup>9</sup> Ω	Insulation resistance	> 10 <sup>9</sup> Ω
Verschmutzungsgrad	3	Pollution degree	3

Bestellbezeichnung Designation	Polzahl Poles	
RKHL 4/S 5,5	4	 
0986 EFC 152	4D	
RKHL 5/S 5,5	5	 
RKHL 5B/S 5,5	5B	 
	0976 PFC 152	 
RKHL 8/S 5,5	8	