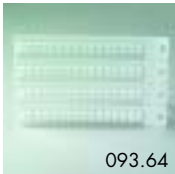
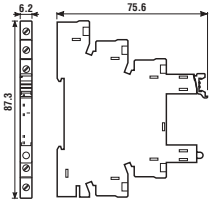


34



93.01

Approvals
(according to type):



093.64

| Relay type | 34.51, 34.81 | |
|--|--------------------------------------|--------------|
| Screw terminal socket: 35 mm (EN 50022) mounting | | |
| Supply voltage | Relay type | Socket type |
| 12 V AC/DC | 34.51.7.012.xx10 | 93.01.0.024 |
| 24 V AC/DC | 34.51.7.024.xx10 | 93.01.0.024 |
| 48 V AC/DC | 34.51.7.048.xx10 | 93.01.0.060 |
| 60 V AC/DC | 34.51.7.060.xx10 | 93.01.0.060 |
| (110...125)V AC/DC | 34.51.7.060.xx10 or 34.81.7.060.xxxx | 93.01.0.125 |
| (220...240)V AC/DC | 34.51.7.060.xx10 or 34.81.7.060.xxxx | 93.01.0.240 |
| (110...125)V AC/DC* | 34.51.7.060.xx10 or 34.81.7.060.xxxx | 93.01.3.125* |
| (220...240)V AC* | 34.51.7.060.xx10 or 34.81.7.060.xxxx | 93.01.3.240* |
| 6 V DC | 34.51.7.005.xx10 | 93.01.7.024 |
| 12 V DC | 34.51.7.012.xx10 | 93.01.7.024 |
| 24 V DC | 34.51.7.024.xx10 or 34.81.7.024.xxxx | 93.01.7.024 |
| 48 V DC | 34.51.7.048.xx10 | 93.01.7.060 |
| 60 V DC | 34.51.7.060.xx10 or 34.81.7.060.xxxx | 93.01.7.060 |
| Sheet of marker tags (64 tags), 6x10 mm | | 093.64 |

* Leakage current suppression.

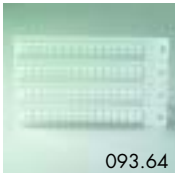
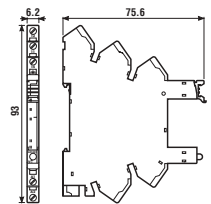
- Rated values: 6A - 250 V
- Insulation: ≥ 6 kV (1.2/50 μ s) *between coil and contacts*
- Protection category: IP 20
- Ambient temperature: (-40...+70) $^{\circ}$ C ($U_N \leq 60$ V), (-40...+55) $^{\circ}$ C ($U_N \geq 60$ V)
- \ominus Screw torque: 0.5 Nm
- Wire strip length: 10 mm
- Max wire size:

| | solid wire | stranded wire |
|-----------------|---------------|---------------|
| mm ² | 1x2.5 / 2x1.5 | 1x2.5 / 2x1.5 |
| AWG | 1x14 / 2x16 | 1x14 / 2x16 |



93.51

Approvals
(according to type):



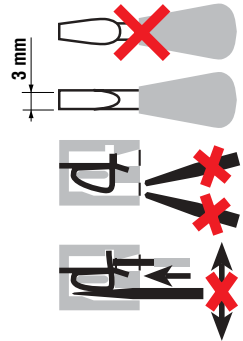
093.64

| Relay type | 34.51, 34.81 | |
|--|--------------------------------------|--------------|
| Screwless terminal socket: 35 mm (EN 50022) mounting | | |
| Supply voltage | Relay type | Socket type |
| 12 V AC/DC | 34.51.7.012.xx10 | 93.51.0.024 |
| 24 V AC/DC | 34.51.7.024.xx10 | 93.51.0.024 |
| (110...125)V AC/DC | 34.51.7.060.xx10 or 34.81.7.060.xxxx | 93.51.0.125 |
| (220...240)V AC/DC | 34.51.7.060.xx10 or 34.81.7.060.xxxx | 93.51.0.240 |
| (110...125)V AC/DC* | 34.51.7.060.xx10 or 34.81.7.060.xxxx | 93.51.3.125* |
| (220...240)V AC* | 34.51.7.060.xx10 or 34.81.7.060.xxxx | 93.51.3.240* |
| 12 V DC | 34.51.7.012.xx10 | 93.51.7.024 |
| 24 V DC | 34.51.7.024.xx10 or 34.81.7.024.xxxx | 93.51.7.024 |
| 60 V DC | 34.51.7.060.xx10 or 34.81.7.060.xxxx | 93.51.7.060 |
| Sheet of marker tags (64 tags), 6x10 mm | | 093.64 |

* Leakage current suppression.

- Rated values: 6A - 250 V
- Insulation: ≥ 6 kV (1.2/50 μ s) *between coil and contacts*
- Protection category: IP 20
- Ambient temperature: (-40...+70) $^{\circ}$ C ($U_N \leq 60$ V), (-40...+55) $^{\circ}$ C ($U_N \geq 60$ V)
- Wire strip length: 10 mm
- Max wire size:

| | solid wire | stranded wire |
|-----------------|------------|---------------|
| mm ² | 1x2.5 | 1x2.5 |
| AWG | 1x14 | 1x14 |





93.11

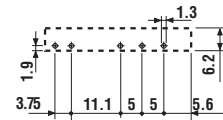
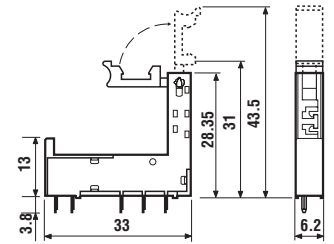
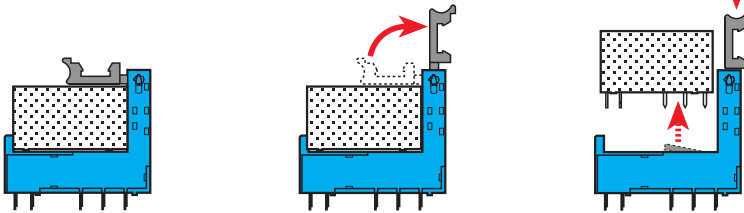
Approvals
(according to type):



| | |
|---|--------------------|
| Relay type | 34.51/34.81 |
| Colour | BLUE |
| P.C.B. sockets with retaining and release clip | 93.11 |

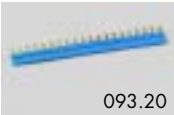
- Rated values: 6 A - 250 V
- Insulation: ≥ 6 kV (1.2/50 μ s) *between coil and contacts*
- Protection category: IP 20
- Ambient temperature: (-40...+70) $^{\circ}$ C

Retaining and release clip use:



Copper side view

FOR 93.01 AND 93.51 SOCKETS:



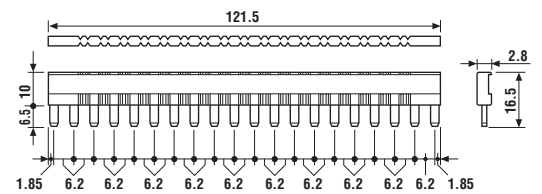
093.20

Approvals
(according to type):



| | |
|---------------------------|--------|
| 20-way jumper link | 093.20 |
|---------------------------|--------|

- Rated values: 36 A - 250 V



093.01

| | |
|--------------------------|--------|
| Plastic separator | 093.01 |
|--------------------------|--------|

- Thickness 2mm, required at the start and the end of a group of interfaces.
Can be used for visual separation group, must be used for:
- protective separation of different voltages of neighbouring PLC interfaces according to VDE 0106-101
 - protection of cut jumper links