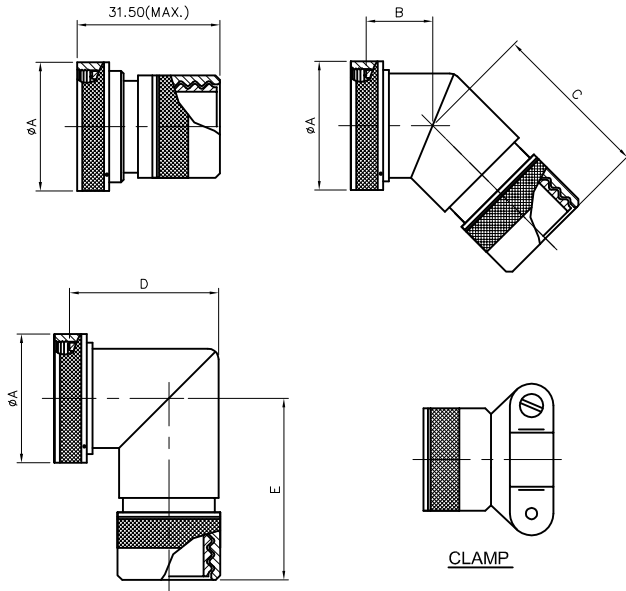
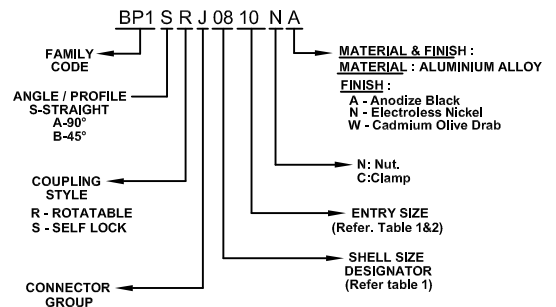


Issue No.	Eng. Ref. No.	REVISIONS	Date	App. By
1	--	ORIGINAL	09/04/06	paramesh
2				

LAMP THREAD BACKSHELL :-



PART NUMBERING SYSTEM :-



J: MIL-DTL-5015 CRIMP, MIL-DTL-26482 SERIES 2, AS81703 SERIES 3, AND MIL-DTL-83723 SERIES III
K: MIL-C-27599 SERIES I AND MIL-C-38999 SERIES I AND II
L: MIL-DTL-38999 SERIES III AND IV
M: BS9522 F0017/PATT105, BS9522 N0001/PATT 603, BS9522 F0090/PATT 608.
N: EN3372, BS9522 F0012/PAT 615, JN1003, LN29729, NFS93422, HE306, PAN6433-2, VG96912.

DIMENSIONS :-

AMPHENOL PART NUMBER DESIGNATOR SHELL SIZE	CONNECTOR SHELL SIZE	ØA (MAX)		E (MAX)		D (MAX)		C (MAX)		B (MAX)		ALLOWABLE ENTRY SIZE (MAX)
		INCH	MM	INCH	MM	INCH	MM	INCH	MM	INCH	MM	
08	8/9	0.75	19.05	1.00	25.40	0.88	22.35	0.89	22.61	0.75	19.05	1
10	10/11	0.89	22.48	1.06	26.92	0.96	24.38	0.92	23.37	0.78	19.81	3
12	7/12/13	1.00	25.40	1.12	28.45	1.00	25.40	0.94	23.88	0.81	20.57	5
14	12/14/15	1.13	28.58	1.16	29.46	1.07	27.18	0.96	24.38	0.83	21.08	6
16	19/16/17	1.25	31.75	1.23	31.24	1.13	28.70	0.98	24.89	0.86	21.84	7
18	27/18/19	1.36	34.54	1.27	32.26	1.18	29.97	1.00	25.40	0.88	22.35	7
20	37/20/21	1.48	37.59	1.33	33.78	1.25	31.75	1.02	25.91	0.91	23.11	8
22	22/23	1.60	40.64	1.39	35.31	1.31	33.27	1.05	26.67	0.93	23.62	9
24	24/25	1.72	43.69	1.45	36.83	1.36	34.54	1.08	27.43	0.94	23.88	10
28	28	2.00	50.80	1.69	42.93	1.48	37.59	1.25	31.75	1.04	26.42	11
32	32	2.25	57.15	1.81	45.97	1.61	40.89	1.30	33.02	1.09	27.69	11
36	36	2.50	63.50	1.92	48.77	1.72	43.69	1.35	34.29	1.14	28.96	12
40	40	4.13	104.90	2.88	73.15	4.13	104.90	2.76	70.10	4.01	101.85	12
44	44	4.13	104.90	3.00	76.20	4.13	104.90	2.88	73.15	4.01	101.85	13
48	48	4.13	104.90	3.12	79.25	4.13	104.90	3.00	76.20	4.01	101.85	13

ENTRY SIZE	ØENTRY(Inches)	ØENTRY(MM)
1	0.125	3.20
2	0.250	6.40
3	0.375	9.50
4	0.500	12.70
5	0.625	15.90
6	0.750	19.10
7	0.875	22.20
8	1.000	25.40
9	1.126	28.60
10	1.250	31.75
11	1.378	35.00
12	1.500	38.10
13	1.750	44.50

MATERIAL :-

- Aluminium alloy as per ASTM B211 / B85
- Corrosion resistant steel as per AMS-QQ-S-763

<h1>Amphenol</h1> <h2>AIPL</h2>	TITLE		LAMP THREAD ADAPTOR		
	Dwg. No. PSTDBS189		Dwg. No. PSTDBS189		
Drawn by <i>raghav</i>	Date <i>08/04/06</i>	Dwg. Size A4	Doc. No.: QF-DEV-76		STANDARD
Checked by <i>mahesh</i>	Date <i>09/04/06</i>		REV. NO. : 02		
App. by <i>paramesh</i>	Date <i>09/04/06</i>		Sheet 1 OF 1		