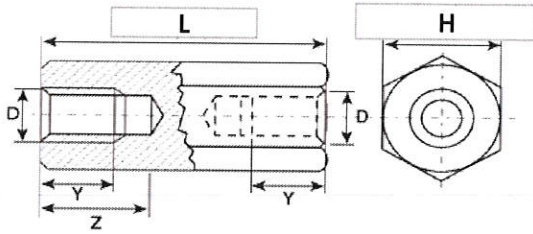




BOURQUI
Fabricant entretoises mécaniques



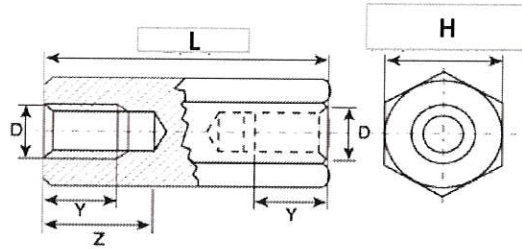
D=M2 6h/6H
H=4

L = Laiton nickelé (CuZn39Pb3)(CW614N)(Ni3-5)
Brass nickel plated

ENTRETOISES FEMELLE/FEMELLE
SPACERS FEMALE/FEMALE

L(±0,10)	D 6h/6H	H	Y (mini)	Z (maxi)	LAITON
5	M2	4	5	5	FL2040-05
8	M2	4	8	8	FL2040-08
10	M2	4	10	10	FL2040-10
12	M2	4	12	12	FL2040-12
15	M2	4	15	15	FL2040-15
18	M2	4	18	18	FL2040-18
20	M2	4	20	20	FL2040-20
25	M2	4	8	25	FL2040-25
30	M2	4	8	13	FL2040-30
35	M2	4	8	13	FL2040-35
40	M2	4	8	13	FL2040-40
45	M2	4	8	13	FL2040-45

Pour les longueurs intermédiaires ou toutes autres demandes, nous consulter



D=M2,5 6h/6H

H=5

L = Laiton nickelé (CuZn39Pb3)(CW614N)(Ni3-5)

Brass nickel plated

A = Acier zingué (11SMmpb37)(1.0737)(Zn3-5 B)

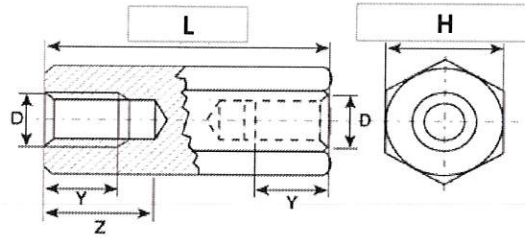
Mild steel zinc plated

ENTRETOISES FEMELLE/FEMELLE

SPACERS FEMALE/FEMALE

L(±0,10)	D 6h/6H	H	Y (mini)	Z (maxi)	LAITON	ACIER
5	M2,5	5	5	5	FL2550-05	FA2550-05
8	M2,5	5	8	8	FL2550-08	FA2550-08
10	M2,5	5	10	10	FL2550-10	FA2550-10
12	M2,5	5	12	12	FL2550-12	FA2550-12
15	M2,5	5	15	15	FL2550-15	FA2550-15
18	M2,5	5	18	18	FL2550-18	FA2550-18
20	M2,5	5	20	20	FL2550-20	FA2550-20
25	M2,5	5	10	25	FL2550-25	FA2550-25
30	M2,5	5	10	30	FL2550-30	FA2550-30
35	M2,5	5	10	15	FL2550-35	FA2550-35
40	M2,5	5	10	15	FL2550-40	FA2550-40
45	M2,5	5	10	15	FL2550-45	FA2550-45

Pour les longueurs intermédiaires ou toutes autres demandes, nous consulter



D=M3 6h/6H

H=5

L = Laiton nickelé (CuZn39Pb3)(CW614N)(Ni3-5)

Brass nickel plated

A = Acier zingué (11SMmpb37)(1.0737)(Zn3-5 B)

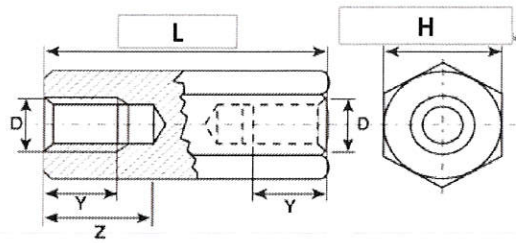
Mild steel zinc plated

ENTRETOISES FEMELLE/FEMELLE

SPACERS FEMALE/FEMALE

L(±0,10)	D 6h/6H	H	Y (mini)	Z (maxi)	LAITON	ACIER
5	M3	5	5	5	FL3050-05	FA3050-05
8	M3	5	8	8	FL3050-08	FA3050-08
10	M3	5	10	10	FL3050-10	FA3050-10
12	M3	5	12	12	FL3050-12	FA3050-12
15	M3	5	15	15	FL3050-15	FA3050-15
18	M3	5	18	18	FL3050-18	FA3050-18
20	M3	5	20	20	FL3050-20	FA3050-20
25	M3	5	10	25	FL3050-25	FA3050-25
30	M3	5	10	30	FL3050-30	FA3050-30
35	M3	5	10	15	FL3050-35	FA3050-35
40	M3	5	10	15	FL3050-40	FA3050-40
45	M3	5	10	15	FL3050-45	FA3050-45
50	M3	5	10	15	FL3050-50	FA3050-50
55	M3	5	10	15	FL3050-55	FA3050-55
60	M3	5	10	15	FL3050-60	FA3050-60
70	M3	5	10	15	FL3050-70	FA3050-70
80	M3	5	10	15	FL3050-80	FA3050-80

Pour les longueurs intermédiaires ou toutes autres demandes, nous consulter



D=M3 6h/6H

H=5,5

L = Laiton nickelé (CuZn39Pb3)(CW614N)(Ni3-5)

Brass nickel plated

A = Acier zingué (11SMmpb37)(1.0737)(Zn3-5 B)

Mild steel zinc plated

I = Inox X8crNiS18-9(303)

Stainless steel

ENTRETOISES FEMELLE/FEMELLE

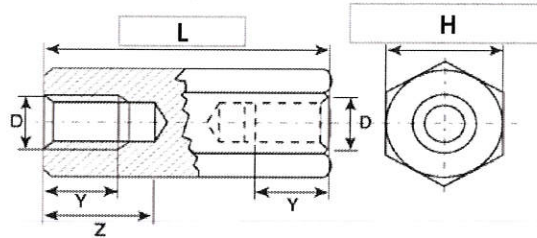
SPACERS FEMALE/FEMALE

L(±0,10)	D 6h/6H	H	Y (mini)	Z (maxi)	LAITON	ACIER	INOX
5	M3	5,50	5	5	FL3055-05	FA3055-05	FI3055-05
8	M3	5,50	8	8	FL3055-08	FA3055-08	FI3055-08
10	M3	5,50	10	10	FL3055-10	FA3055-10	FI3055-10
12	M3	5,50	12	12	FL3055-12	FA3055-12	FI3055-12
15	M3	5,50	15	15	FL3055-15	FA3055-15	FI3055-15
18	M3	5,50	18	18	FL3055-18	FA3055-18	FI3055-18
20	M3	5,50	20	20	FL3055-20	FA3055-20	FI3055-20
25	M3	5,50	10	25	FL3055-25	FA3055-25	FI3055-25
30	M3	5,50	10	30	FL3055-30	FA3055-30	FI3055-30
35	M3	5,50	10	15	FL3055-35	FA3055-35	FI3055-35
40	M3	5,50	10	15	FL3055-40	FA3055-40	FI3055-40
45	M3	5,50	10	15	FL3055-45	FA3055-45	FI3055-45
50	M3	5,50	10	15	FL3055-50	FA3055-50	FI3055-50
55	M3	5,50	10	15	FL3055-55	FA3055-55	FI3055-55
60	M3	5,50	10	15	FL3055-60	FA3055-60	FI3055-60
70	M3	5,50	10	15	FL3055-70	FA3055-70	FI3055-70
80	M3	5,50	10	15	FL3055-80	FA3055-80	FI3055-80

Pour les longueurs intermédiaires ou toutes autres demandes, nous consulter



BOURQUI
Fabricant entretoises mécaniques



D=M4 6h/6H

H=7

L = Laiton nickelé (CuZn39Pb3)(CW614N)(Ni3-5)

Brass nickel plated

A = Acier zingué (11SMmpb37)(1.0737)(Zn3-5 B)

Mild steel zinc plated

I = Inox X8crNiS18-9(303)

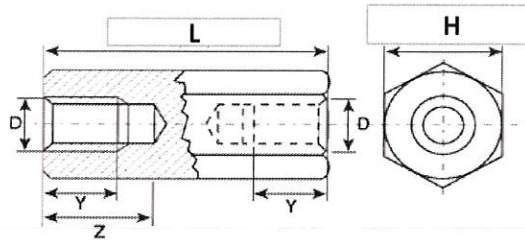
Stainless steel

ENTRETOISES FEMELLE/FEMELLE

SPACERS FEMALE/FEMALE

L(±0,10)	D 6h/6H	H	Y (mini)	Z (maxi)	LAITON	ACIER	INOX
5	M4	7	5	5	FL4070-05	FA4070-05	FI4070-05
8	M4	7	8	8	FL4070-08	FA4070-08	FI4070-08
10	M4	7	10	10	FL4070-10	FA4070-10	FI4070-10
12	M4	7	12	12	FL4070-12	FA4070-12	FI4070-12
15	M4	7	15	15	FL4070-15	FA4070-15	FI4070-15
18	M4	7	18	18	FL4070-18	FA4070-18	FI4070-18
20	M4	7	20	20	FL4070-20	FA4070-20	FI4070-20
25	M4	7	10	25	FL4070-25	FA4070-25	FI4070-25
30	M4	7	10	30	FL4070-30	FA4070-30	FI4070-30
35	M4	7	10	15	FL4070-35	FA4070-35	FI4070-35
40	M4	7	10	15	FL4070-40	FA4070-40	FI4070-40
45	M4	7	10	15	FL4070-45	FA4070-45	FI4070-45
50	M4	7	10	15	FL4070-50	FA4070-50	FI4070-50
55	M4	7	10	15	FL4070-55	FA4070-55	FI4070-55
60	M4	7	10	15	FL4070-60	FA4070-60	FI4070-60
65	M4	7	10	15	FL4070-65	FA4070-65	FI4070-65
70	M4	7	10	15	FL4070-70	FA4070-70	FI4070-70
75	M4	7	10	15	FL4070-75	FA4070-75	FI4070-75
80	M4	7	10	15	FL4070-80	FA4070-80	FI4070-80

Pour les longueurs intermédiaires ou toutes autres demandes, nous consulter



D=M5 6h/6H

H=8

L = Laiton nickelé (CuZn39Pb3)(CW614N)(Ni3-5)

Brass nickel plated

A = Acier zingué (11SMmpb37)(1.0737)(Zn3-5 B)

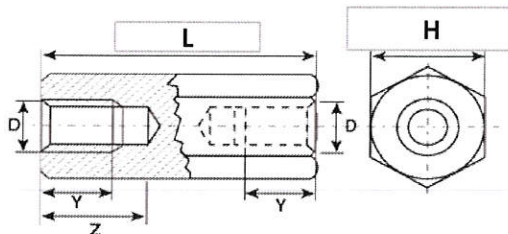
Mild steel zinc plated

ENTRETOISES FEMELLE/FEMELLE

SPACERS FEMALE/FEMALE

L(±0,10)	D 6h/6H	H	Y (mini)	Z (maxi)	LAITON	ACIER
5	M5	8	5	5	FL5080-05	FA5080-05
8	M5	8	8	8	FL5080-08	FA5080-08
10	M5	8	10	10	FL5080-10	FA5080-10
12	M5	8	12	12	FL5080-12	FA5080-12
15	M5	8	15	15	FL5080-15	FA5080-15
18	M5	8	18	18	FL5080-18	FA5080-18
20	M5	8	20	20	FL5080-20	FA5080-20
25	M5	8	10	25	FL5080-25	FA5080-25
30	M5	8	10	30	FL5080-30	FA5080-30
35	M5	8	10	15	FL5080-35	FA5080-35
40	M5	8	10	15	FL5080-40	FA5080-40
45	M5	8	10	15	FL5080-45	FA5080-45
50	M5	8	10	15	FL5080-50	FA5080-50
55	M5	8	10	15	FL5080-55	FA5080-55
60	M5	8	10	15	FL5080-60	FA5080-60
70	M5	8	10	15	FL5080-70	FA5080-70
80	M5	8	10	15	FL5080-80	FA5080-80

Pour les longueurs intermédiaires ou toutes autres demandes, nous consulter



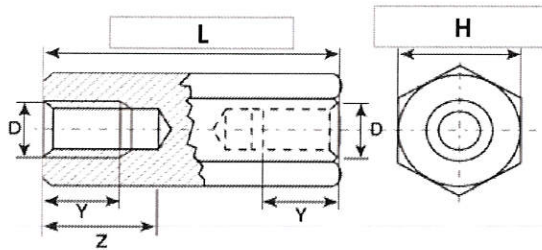
D=M6 6h/6H
H=10

A = Acier zingué (11SMmpb37)(1.0737)(Zn3-5 B)
Mild steel zinc plated

**ENTRETOISES
FEMELLE/FEMELLE
SPACERS FEMALE/FEMALE**

L(±0,10)	D 6h/6H	H	Y (mini)	Z (maxi)	ACIER
10	M6	10	10	10	FA60100-10
12	M6	10	12	12	FA60100-12
15	M6	10	15	15	FA60100-15
18	M6	10	18	18	FA60100-18
20	M6	10	20	20	FA60100-20
25	M6	10	25	25	FA60100-25
30	M6	10	13	30	FA60100-30
35	M6	10	13	35	FA60100-35
40	M6	10	13	40	FA60100-40
45	M6	10	13	18	FA60100-45
50	M6	10	13	18	FA60100-50
55	M6	10	13	18	FA60100-55
60	M6	10	13	18	FA60100-60
70	M6	10	13	18	FA60100-70
80	M6	10	13	18	FA60100-80

Pour les longueurs intermédiaires ou toutes autres demandes, nous consulter



D=M8 6h/6H

H=13

A = Acier zingué (11SMmpb37)(1.0737)(Zn3-5 B)

Mild steel zinc plated

**ENTRETOISES
FEMELLE/FEMELLE**

SPACERS FEMALE/FEMALE

L(±0,10)	D 6h/6H	H	Y (mini)	Z (maxi)	ACIER
15	M8	13	15	15	FA80130-15
18	M8	13	18	18	FA80130-18
20	M8	13	20	20	FA80130-20
25	M8	13	25	25	FA80130-25
30	M8	13	30	30	FA80130-30
35	M8	13	15	35	FA80130-35
40	M8	13	15	40	FA80130-40
50	M8	13	15	20	FA80130-50
60	M8	13	15	20	FA80130-60
70	M8	13	15	20	FA80130-70
80	M8	13	15	20	FA80130-80

Pour les longueurs intermédiaires ou toutes autres demandes, nous consulter