



Our *passion* is enclosures.

The evolution in enclosure technology.

ROLEC aluPLUS.

The PLUS in technology and design.



ROLEC milestones
in enclosure development.





aluPLUS

The evolution: From terminal to electronic enclosure.

Over 40 years ago Friedhelm Rose embarked on the development of enclosure technology. His inventions became standards. ROLEC is still setting them today.

Originally designed as terminal enclosures, today ROLEC enclosures primarily protect electrical and electronic components in harsh environments. They are constantly being aligned with current demands – investment in modification, in line with modern CNC-controlled processing machines. ROLEC drives progress.

ROLEC is constantly setting new benchmarks in the technology and design of robust industrial enclosures. The new benchmark is the aluPLUS enclosure range! ROLEC accompanies industrial development.

ROLEC produces the trailblazers. The latest self-imposed task: Transfer new technology to conventional enclosure dimensions. Result: aluPLUS. The attachment and installation dimensions precisely reflect those of the familiar standard enclosures, e.g. aluKOM.

ROLEC aluPLUS. Transfer brilliant ROLEC ideas to standard enclosures.



Advantages at a glance



Integrated recesses for membrane keypads.



Enclosure attachment with closed lids.



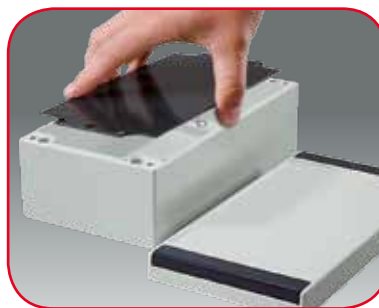
Design covers for the perfect look.



Economical lid supports.



Attachment domes in the enclosures and lids for components.



Standardised installation dimensions.

ROLEC has no role models. Is the standard. ROLEC has its ear to the market. The analysis of thousands of orders shows what users want. Why then constantly repeat working processes, when the same things have been considered for so many requirements?! For example: The recess in the lid surface for protecting the edges of the membrane keypad.

Another example: The application of external feet for external fastening is only an auxiliary addition and not essential to the design. aluPLUS enclosures can be fastened with closed lids.

And another: Just four screws and even contact pressure guarantee leak-tightness. Why do they need to detract from the appearance?

With aluPLUS the attachment level disappears beneath a retrospectively easy clip-on plastic design cover. The appealing result: An elegant design previously unknown in standard industrial enclosures.

Lid supports: Compatibility with standard enclosures was the main target with aluPLUS enclosures. As such lid supports such as those with aluCASE could not be integrated. ROLEC therefore developed economical lid supports as accessories.

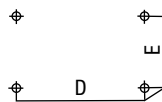
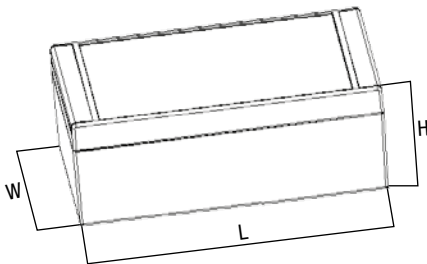


aluPLUS

aluPLUS range overview

Type	Mat.-No	L	W	H	D	E	g	M	D	EMV	L	T	DH	Plus
AP 082	196.182.000	125	84	59	113	52	395	●	□	●	●	●	○	●
AP 083	196.183.000	175	84	59	163	52	511	●	□	●	●	●	○	●
AP 100	196.100.000	100	100	82	87	65	575	●	□	●	●	●	○	●
AP 102	196.102.000	160	100	82	147	65	767	●	□	●	●	●	○	●
AP 120	196.120.000	122	120	82	106	82	770	●	□	●	●	●	●	●
AP 122	196.122.000	220	120	82	204	82	1110	●	□	●	●	●	●	●
AP 161	196.161.000	160	160	90	140	110	1190	●	□	●	●	●	●	●
AP 162	196.162.000	260	160	90	240	110	1620	●	□	●	●	●	●	●

□ Standard ● Available ○ Not available



Installation dimensions

Technical information

Enclosure

Die-cast aluminium
EN AN-44300 DIN EN 1706
(GD AL SI 12 / DIN 1725)
1° mould slope for casting
ejection, internal measures
diminishing circulatory towards
enclosure bottom by 1°.

Lid screws

Stainless steel 1.4567, captive.

Integrated recess

1.7 mm recess in the lid for
membrane keypad or front
plates, membrane dimension-
al data for standard powder
coating.

Optional lid support

Screw hinge, cover screw with
plastic element from stainless
steel 1.4567 and polyamide
(PA6).

Clip-on design cover

Plastic PBT in RAL 7016, an-
thracite grey.

Internal mounting

Attachment webs in the bottom
section and attachment domes
in the top section ensure
secure fastening of installed
components.

Ingress protection

IP 66 / EN 60529
IP 67 / EN 60529 (optional)

Gasket

Silicone gasket
(-50°C bis +140°C)
Optional: Chloroprene gasket
(-30°C bis +90°C)

Coating

Powder coated in RAL 7035,
light grey,
optional: Special colours



M

Mounting plates



D

Silicone gasket



EMV

Shielding



L

Corrosion proof
coating



T

Supporting rails
for terminal blocks



DH

Lid support



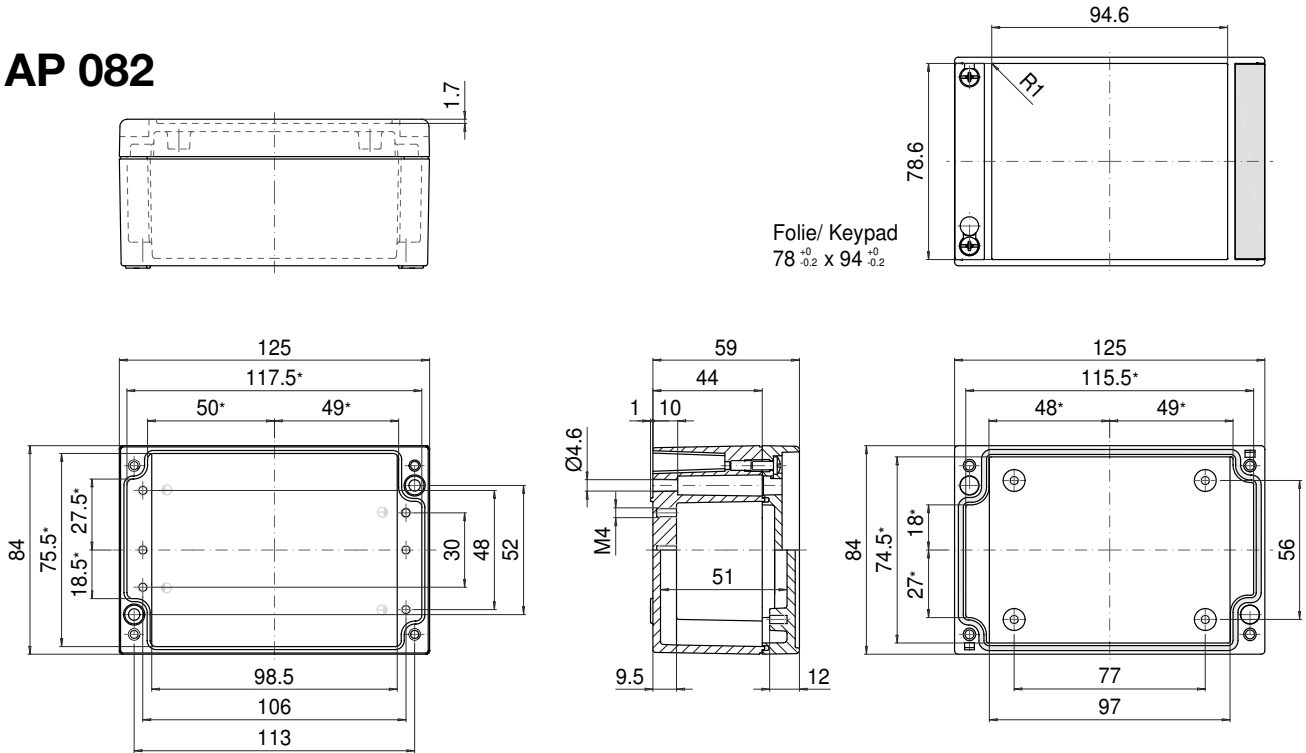
PLUS

Protection class
IP 67

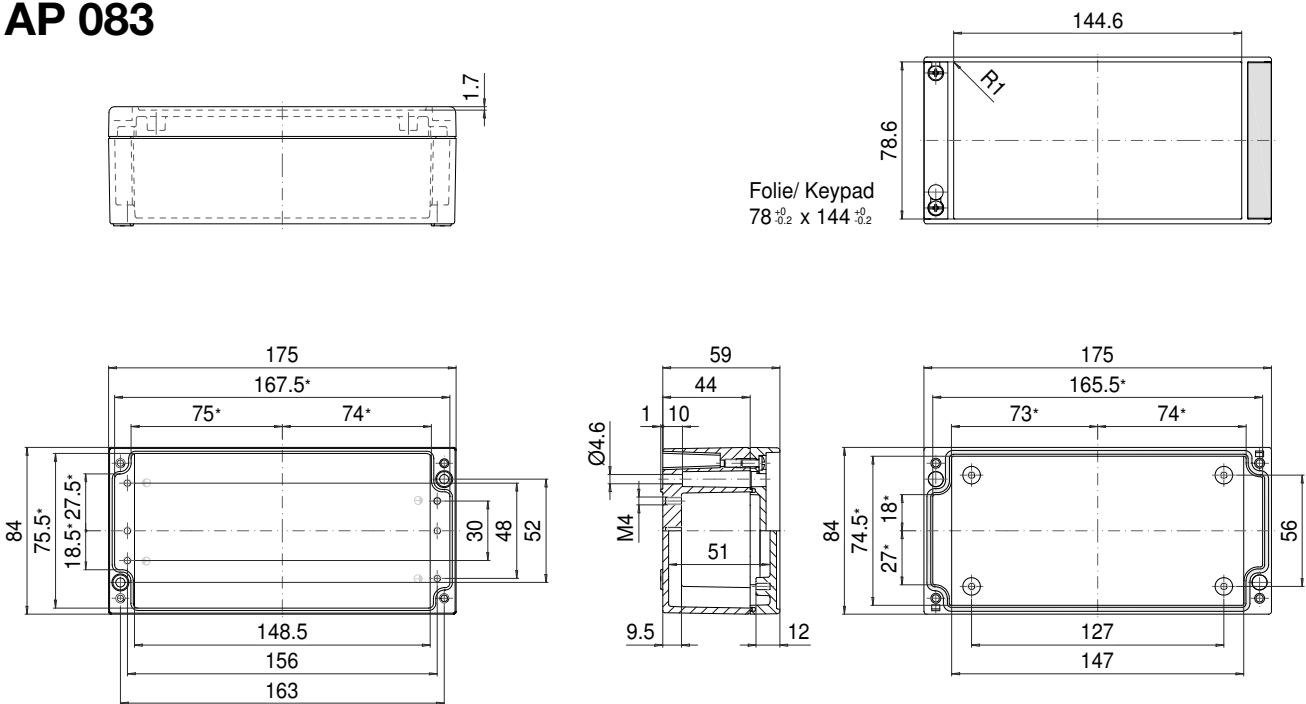
ROLEC Attachment and installation dimensions

aluPLUS

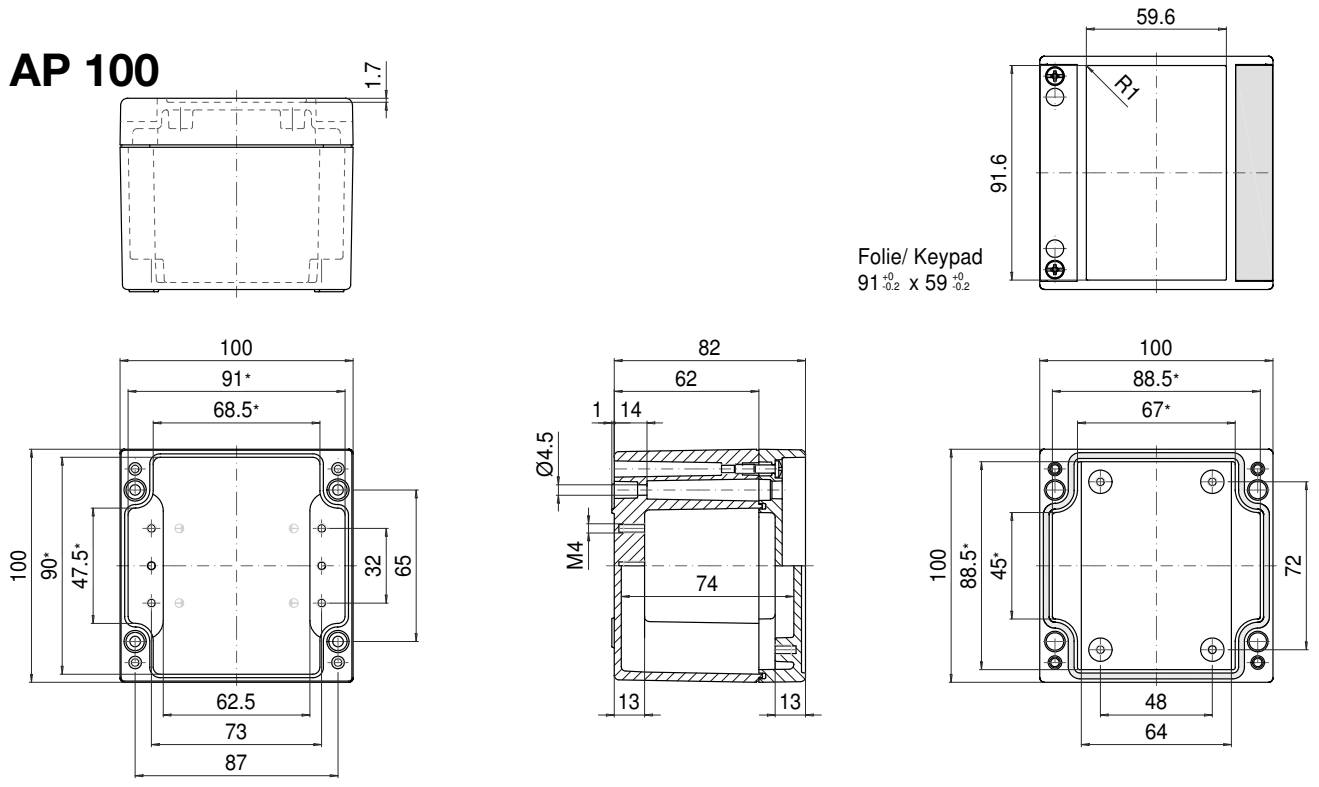
AP 082



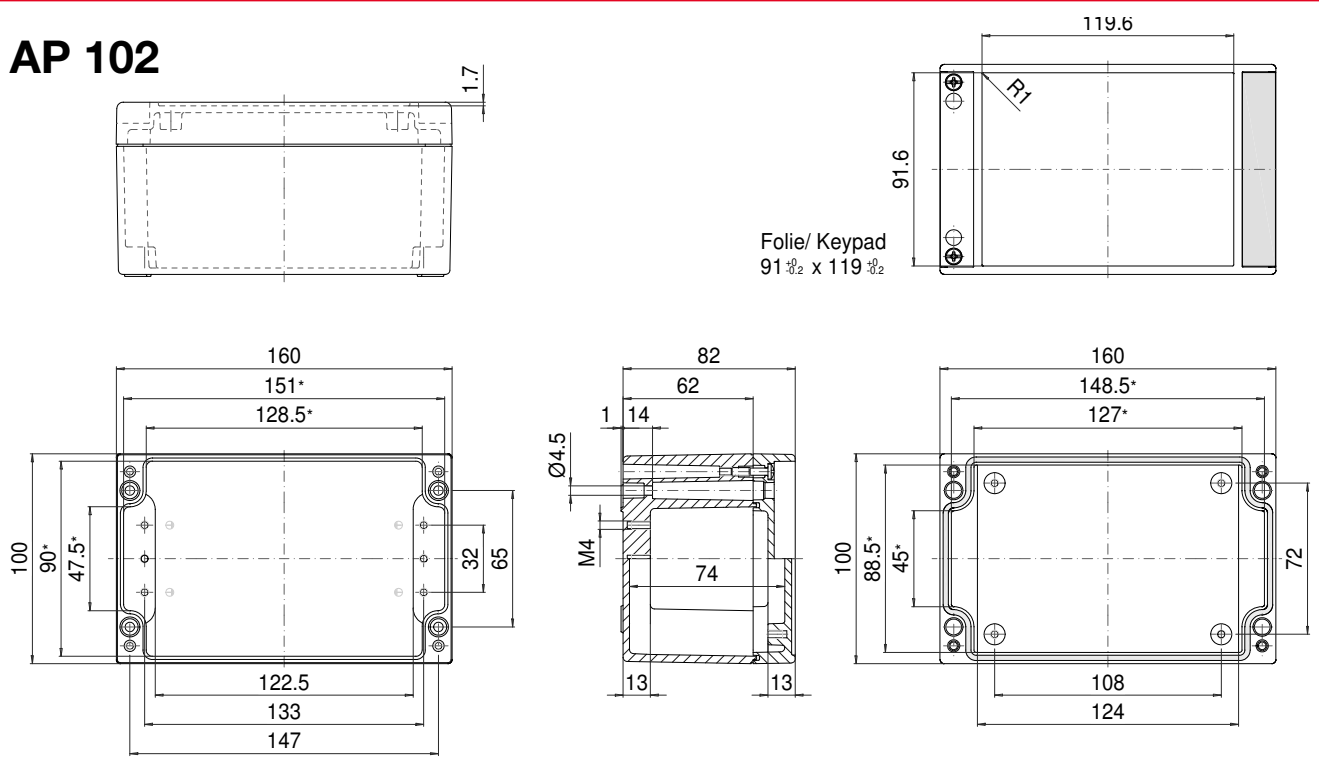
AP 083



AP 100



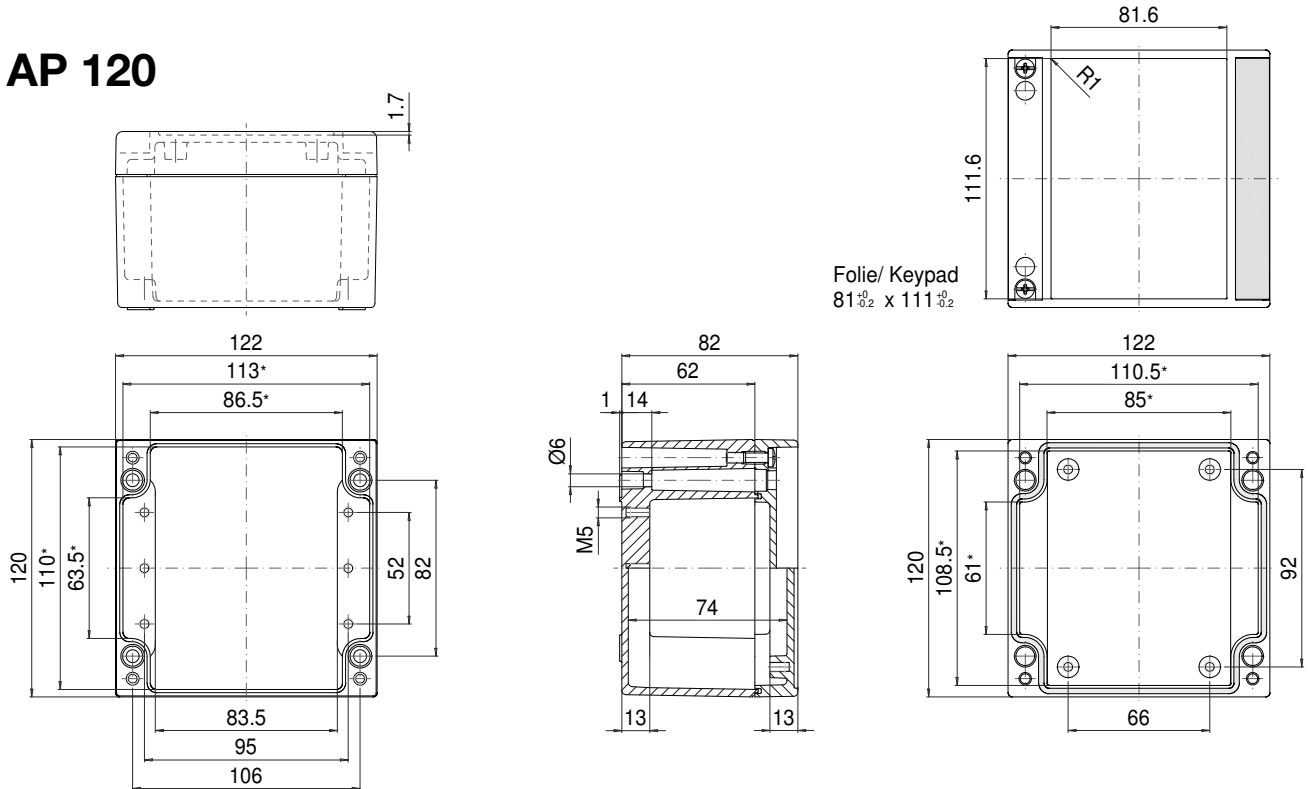
AP 102



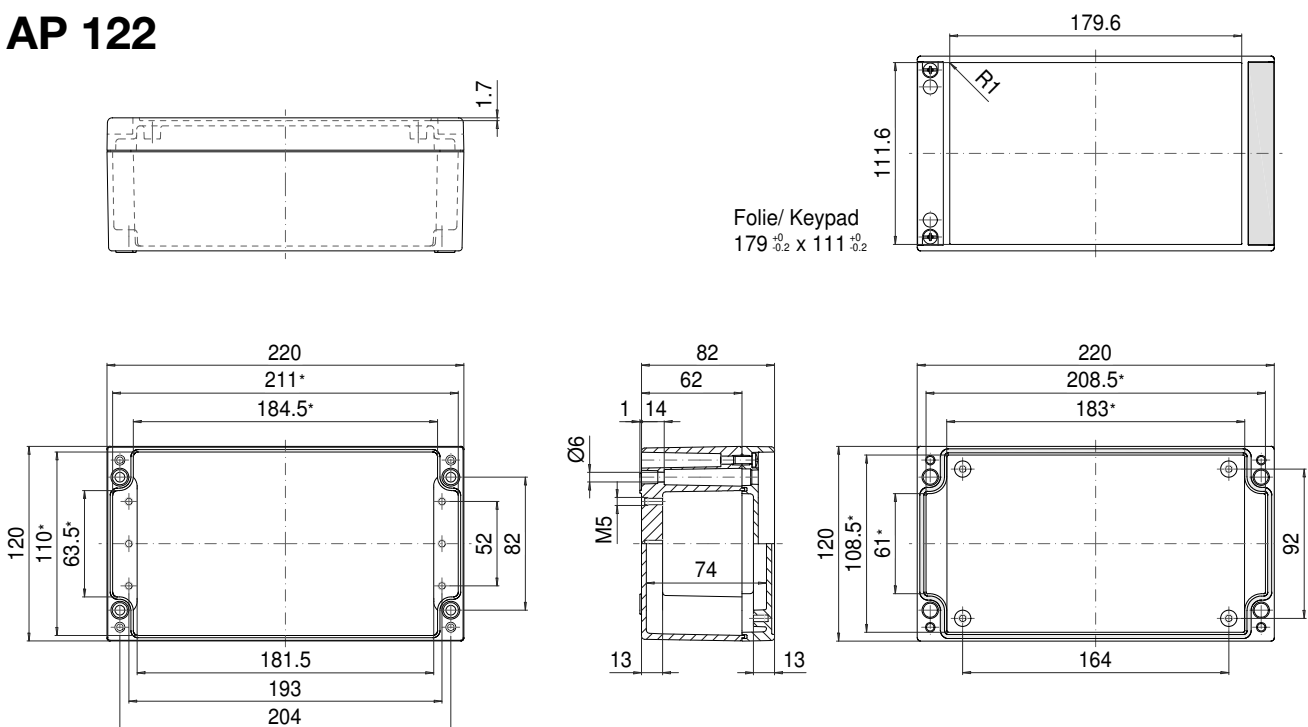
ROLEC Attachment and installation dimensions

aluPLUS

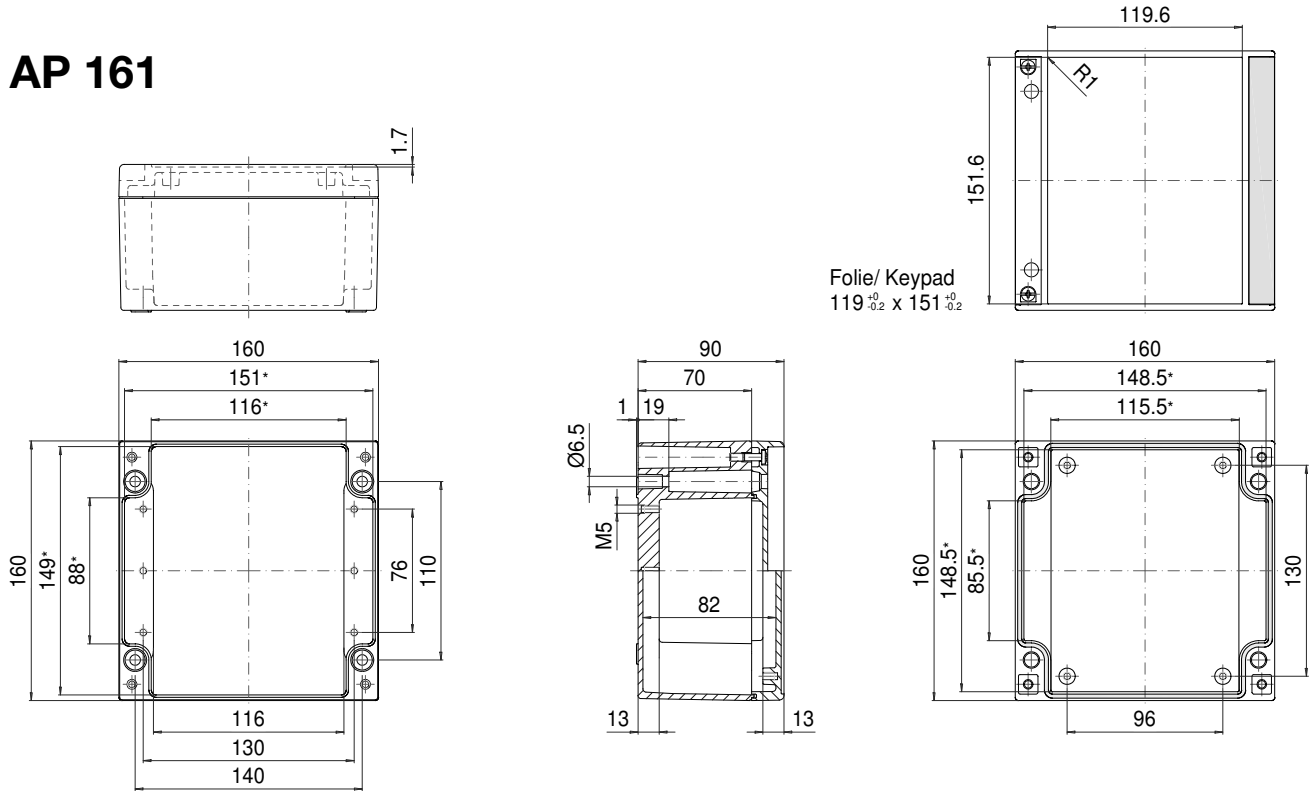
AP 120



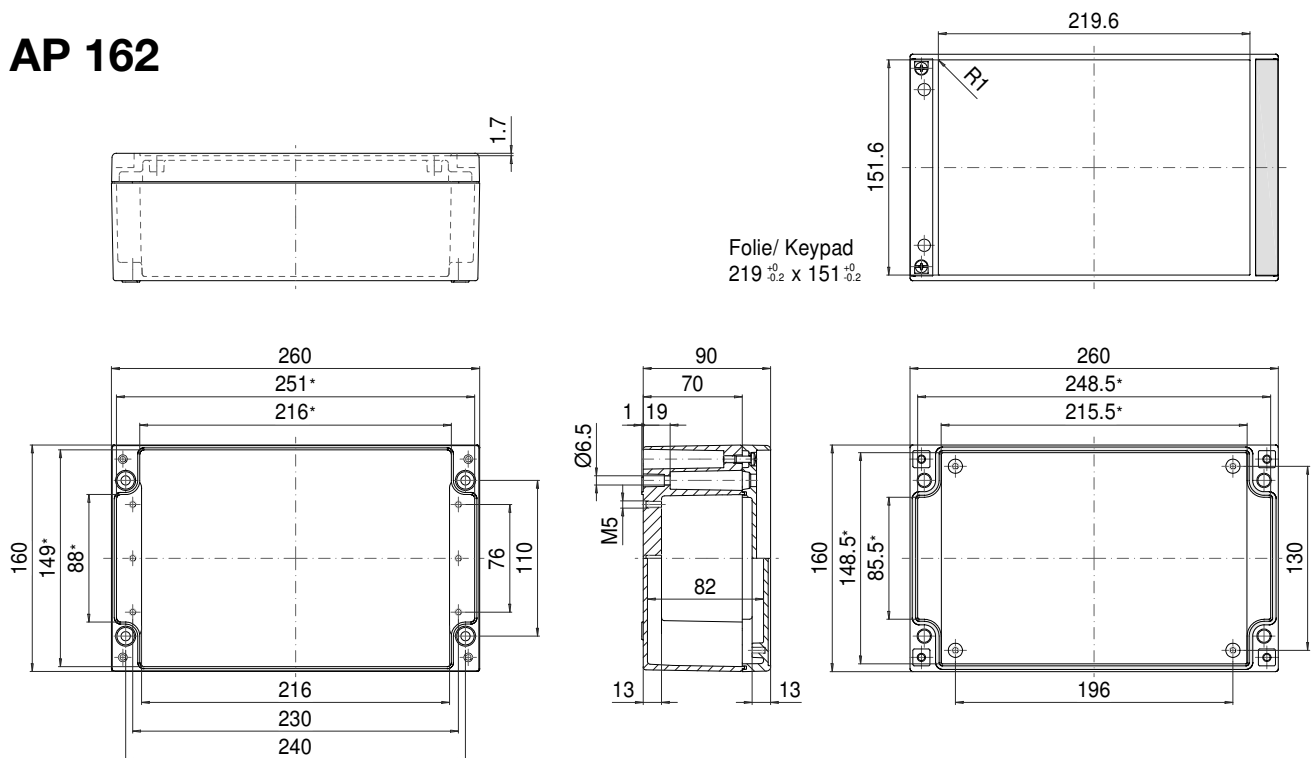
AP 122



AP 161



AP 162



ROLEC.

„Ready-to-install by the manufacturer“



Tailored for installation



Processing example

Electronics and terminal enclosures are supplied ready for installation.

The user need only install the electrical and electronic components and attach to the machine - ROLEC takes care of everything else.

Enclosures are painted in standard colours or in accordance with our customers' wishes. On request we supply enclosures ready-to-install with membrane keypads, terminals and cable glands.

Drilling. Milling. Engraving... in accordance with your specifications.

Here you can see an example of enclosure processing. Drilling and milling specifications are incorporated into the enclosure structure and engraved into the surface depending on the function. The principle is simple: We design our enclosure in accordance with your specifications, ready for immediate integration into your work flow.



Drilling - Milling



Engraving - Serigraphy



Powder coating - Painting



Inserting/Assembly

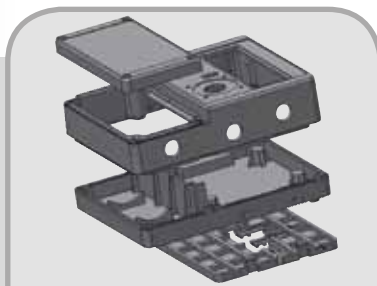


Front plates



Membrane keypads

Development on customer order



Development



**Economical modification
by tool inserts**



Customized design

ROLEC .

Finished means finished.



Our *passion* is enclosures.

Just-in-time. Ready for installation.

- Drilled.
- Milled.
- Engraved.
- Printed.
- Powder coated.
- Wet painted.
- Equipped.
- Assembled.
- Delivered.

ROLEC
Gehäuse-Systeme GmbH
Kreuzbreite 2
31737 Rinteln

Fon +49 (0) 57 51/ 40 03-0
Fax +49 (0) 57 51/ 40 03-50

info@rolec.de
www.rolec.de