

NEW

WISKA 
make power smile

COMBI® 116 and 206

Clever. Useful. Strong

COMBI by WISKA

COMBI 116 and 206

Expanding on our iconic COMBI® junction box range, we are pleased to introduce our COMBI® 116 and 206 models.

These 2 new sizes offer users greater versatility and functionality in areas where space is a premium.

Featuring all the trade mark COMBI® characteristics as well as WISKA's usual high standard of quality and workmanship the COMBI® 116 and 206 complete our COMBI® range.



*"Our COMBI Junction Boxes have become **the standard for protecting outside connections**, comments Sales Engineer Terry Boswell "here at WISKA we are always looking to develop and improve the end users experience. The COMBI 206 and 116 are a direct result of us listening to contractors and creating a subtler looking junction box."*



Twice the size: COMBI® 116.

Twice as wide as the COMBI® 108, this rectangle shaped box offers additional installation space and flexibility with IP66 protection.

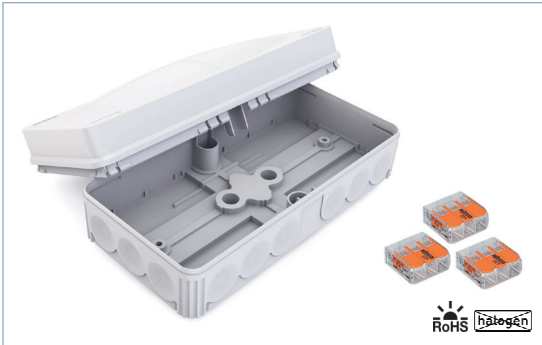


Small, but perfectly formed: COMBI® 206.

The smallest member of the COMBI® family, the 206 boasts IP66 / IP67 protection as well as 6 threaded membrane entries. Perfectly suited for outside applications including LED Lighting and CCTV systems.

NEW SIZES

TECHNICAL INFO



Technical Data COMBI® 116 (COMBI 116/221)

Size:	152x76 mm
Protection class:	IP66
Glow wire test:	750 °C
Operating temperature:	-30 °C to 100 °C
Installation temperature:	-5 °C to 60 °C
Light Grey	10110032
Black	10110031
White	10110033

COMBI® 116/221:

The size

Measuring 152x76 mm the new COMBI® 116 is twice as big as the COMBI® 108 offering additional installation space.

Membrane entry

18 membrane entries on the side and 4 on the rear offer quick, fast and easy cable entry making the COMBI 116 ideal for underfloor heating systems.

Mounting clip

The unique mounting clip offers quick and easy installation.

Terminals

Complete with 3 x 221 3 conductor lever connectors.

Cable retention

Additional cable retention clip available.



COMBI® 206/221:

Small, but perfectly formed

Measuring 85x49mm (approximately half the size of the COMBI® 308) the COMBI® 206 is ideal for outside applications where space is a premium e.g. with LED Lighting.

Threaded membrane entries

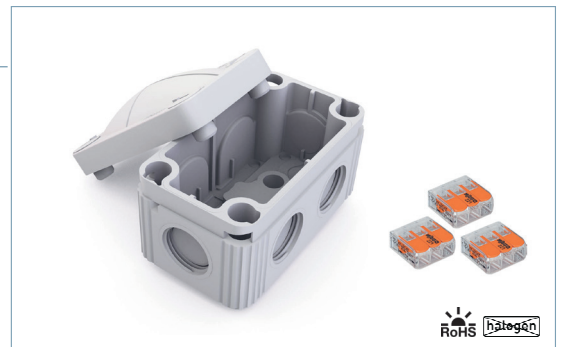
2 entries on the rear and 6 membrane threaded M 20 entries on the sides make for maximum installation flexibility.

Protection class

IP66/67 protection.

Terminals

Complete with 3 x 221 3 conductor lever connectors.



Technical Data COMBI® 206 (COMBI 206/221)

Size:	85x49 mm
Protection class:	IP66 / IP67
Glow wire test:	750 °C
Operating temperature:	-30 °C to 100 °C
Installation temperature:	-5 °C to 60 °C
Light Grey	10109901
Black	10109900
White	10109902

Coming soon...

The **COMBI 206 Kit**, complete with 1 x ESKV M20 Gland, 1 x MFD multi-hole Insert and 3 x 221 3 conductor lever connectors.

