

EMT 20

Membrane spout



Products may differ in size, colour and appearance to those shown. If you require further information or customisation, please contact us directly.



Material	Thermoplastic elastomer
Temp. range min	-40 °C
Temp. range max	80 °C
Glow wire test	750 °C
Protection class	IP66
Ø Connection thread D	20
Length screw-in thread L	9,5 mm
Ø cable diameter min	1 mm
Ø cable diameter max	13 mm
External diameter ED	25 mm
Total length TL	11 mm
Ø Drilling	20,5 mm
Wall thickness S	2 mm
Product Color	RAL 7035
Order no. RAL 7035	10062560
Type	EMT 20
Packing unit	100
ETIM-Classification	EC000451

13.08.2019

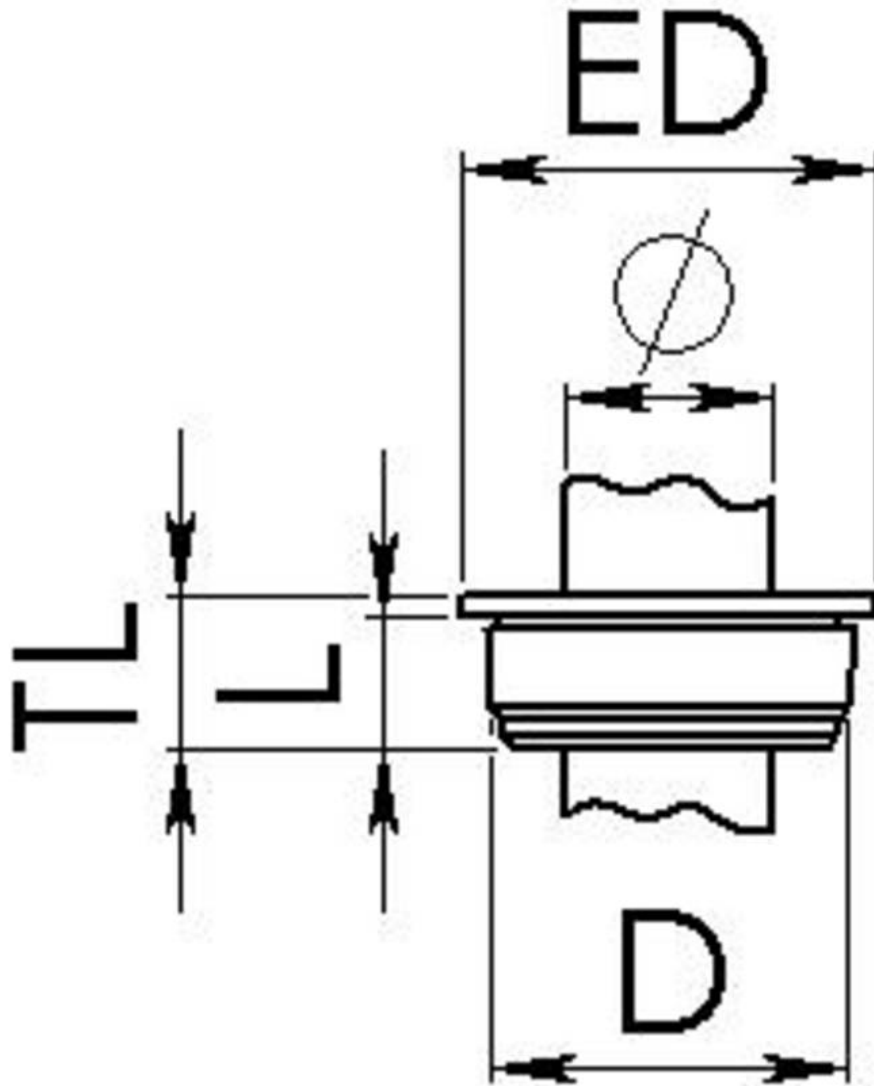
Your Contact:

WISKA UK Ltd.

Unit 7, Hurling Way · St. Columb Major Business Park · TR9 6SX, St. Columb Major, Cornwall · Great Britain

☎ +44-12-08816062 · 📠 +44-12-08816708

info@wiska.co.uk · www.wiska.co.uk



Your Contact:

WISKA UK Ltd.

Unit 7, Hurling Way · St. Columb Major Business Park · TR9 6SX, St. Columb Major, Cornwall · Great Britain

☎ +44-12-08816062 · 📠 +44-12-08816708

info@wiska.co.uk · www.wiska.co.uk

Other technical data on request / subject to change without notice