

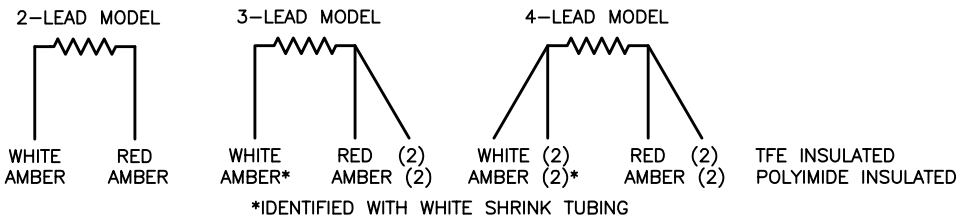
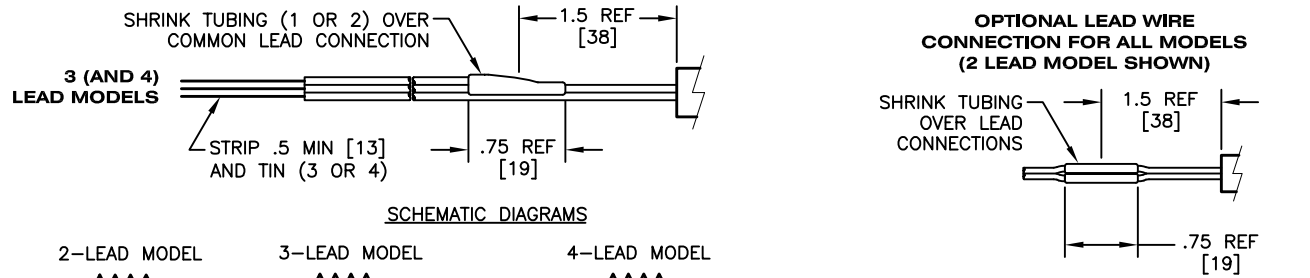
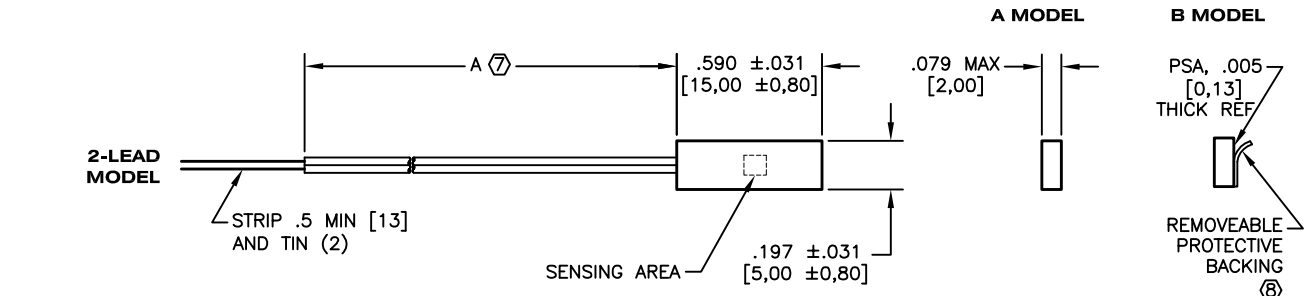
WHEN ORDERING SPECIFY SENSING ELEMENT, NUMBER OF LEADS, LEAD INSULATION, LEAD LENGTH AND OUTER SURFACE TYPE.


S17624PDYK40A ← EXAMPLE OF MODEL NUMBER

- S17624** SPECIFICATIONS DRAWING NUMBER.
- PD** SENSING ELEMENT: SEE NOTE ② FOR ELEMENT TYPES AND THEIR CODES.
- Y** NUMBER OF LEADS:
 Y = 2 LEADS;
 Z = 3 LEADS;
 X = 4 LEADS.
- K** LEAD INSULATION:
 T = PTFE;
 K = POLYIMIDE.
- 40** LEAD LENGTH A IN INCHES.
 (STANDARD LENGTH = 40" [1000]).
- A** OUTER SURFACE TYPE:
 A = NON-ADHERING;
 B = ADHERING.

1. ELEMENT: PLATINUM OR NICKEL.
- ② RESISTANCE:
 PD PLATINUM: 100.00 OHMS ±.12% (100.12/99.88) AT 0°C (32°F), R/T TABLES #5-100 (°C) AND #6-100 (°F). R/T TOLERANCES PER EN 60751 (IEC 751), CLASS B.
 PF PLATINUM: 1000.0 OHMS ±.12% (1001.2/998.8) AT 0°C (32°F), R/T TABLES #5-1000 (°C) AND #6-1000 (°F).
 PS PLATINUM: 10000.0 OHMS ±.12% (10012.0/9988.0) AT 0°C (32°F), R/T TABLES #5-10000 (°C) AND #6-10000 (°F).
 PW PLATINUM: 1000.0 OHMS ±.12% (1001.2/998.8) AT 0°C (32°F), 0.00375 Ω/Ω/°C.
 NB NICKEL: 100.00 OHMS ±.22% (100.22/99.78) AT 0°C (32°F), R/T TABLES #20-100 (°C) AND #6-100 (°F). R/T TOLERANCES PER DIN 43760.
 NA NICKEL: 120.00 OHMS ±.5% (120.60/119.40) AT 0°C (32°F), R/T TABLES #7-120 (°C) AND #8-120 (°F).
 NJ NICKEL: 1000.00 OHMS ±.22% (1002.24/997.76) AT 0°C (32°F), 0.00618 Ω/Ω/°C.
- LEADWIRE RESISTANCE OF APPROXIMATELY .08 OHMS/2-LEAD FOOT IS EXCLUDED IN THE CALIBRATED RESISTANCE OF 2-LEAD MODELS; EXCLUDED IN 3 AND 4-LEAD MODELS (SEE APPLICATION AID #18).
3. TEMPERATURE RANGE: -50°C TO 200°C (-58°F TO 392°F); REDUCING TO 177°C (350°F) FOR B MODELS.
4. INSULATION RESISTANCE: 10,000 MEGOHMS MINIMUM AT 500 VOLTS DC, ELEMENT TO OUTER SURFACES.
5. LEADS: AWG #26, STRANDED. SEE MODEL NUMBER MAKEUP ABOVE FOR LEAD INSULATION OPTIONS.
6. INSULATION MATERIAL: POLYIMIDE FILM.
- ⑦ LEAD LENGTH TOLERANCE:
 +1/-0" [+25/-0] FOR LEAD LENGTH OF 24" [610] OR LESS;
 +5/-0% FOR LEAD LENGTH GREATER THAN 24" [610].
- ⑧ B MODEL HAS REMOVABLE BACKING TO PROTECT THE PRESSURE-SENSITIVE ADHESIVE.

REVISIONS					
REV	DESCRIPTION	DATE	ECO	DR	APPD
E	ADDED PW OPTION; 1.5 REF WAS .9 REF	06-23-98	32086	JWR	DLW
F	REVISED PF AND PS ELEMENT R/T TABLES	12-30-99	34931	JWR	DLW
G	ADDED T OR K LEAD INSULATION OPTION	02-21-02	38794	JAD	BAL
H	.75 REF WAS 1.5 REF	06-06-03	40741	JAD	BAL
I	ADDED NB, NA, AND NJ ELEMENT; DELETED NOTE 9; REVISED NOTE 2; REVISED MODEL NUMBER MAKEUP ELEMENT CODE	11-11-03	41321	JAD	DLW
J	PW, ±.12 (1001.2/998.8) WAS ±.2 (1002.00/998.00)	03-16-09	1186933	JAD	BAL
K	ADDED CONNECTION OPTION	03-01-11	1533527	BMP	BAL



UNLESS OTHERWISE SPECIFIED DIMENSIONS AND TOLERANCES IN INCHES DIMENSIONS IN [] ARE IN MILLIMETERS						MATERIAL DESCRIPTION			
ONE PLACE (.0)	±.020	[±0,51]	DR	JWR	09-02-93	TITLE: RESISTANCE THERMOMETER THERMAL-RIBBON S17624 SERIES			
TWO PLACE (.00)	±.010	[±0,25]	CHK	BAL	11-03-93				
THREE PLACE (.000)	±.005	[±0,13]	APP	BFJ	11-05-93				
ANGLES:			ENGR	DLW	11-03-93				
			QA						
MATERIAL:			PRD	SHR	11-04-93	 www.minco.com COMPANY CONFIDENTIAL PROPRIETARY INFORMATION OF MINCO PRODUCTS, INC. DO NOT DUPLICATE			
FINISH:			NEXT ASSY		CATEGORY 01-			S17624	REV K
			USED ON		INIT. JOB				
					INVENTORY NO	SCALE NONE	DWG SIZE B	CAGE IDENT. 09359	SHEET 1 OF 1