

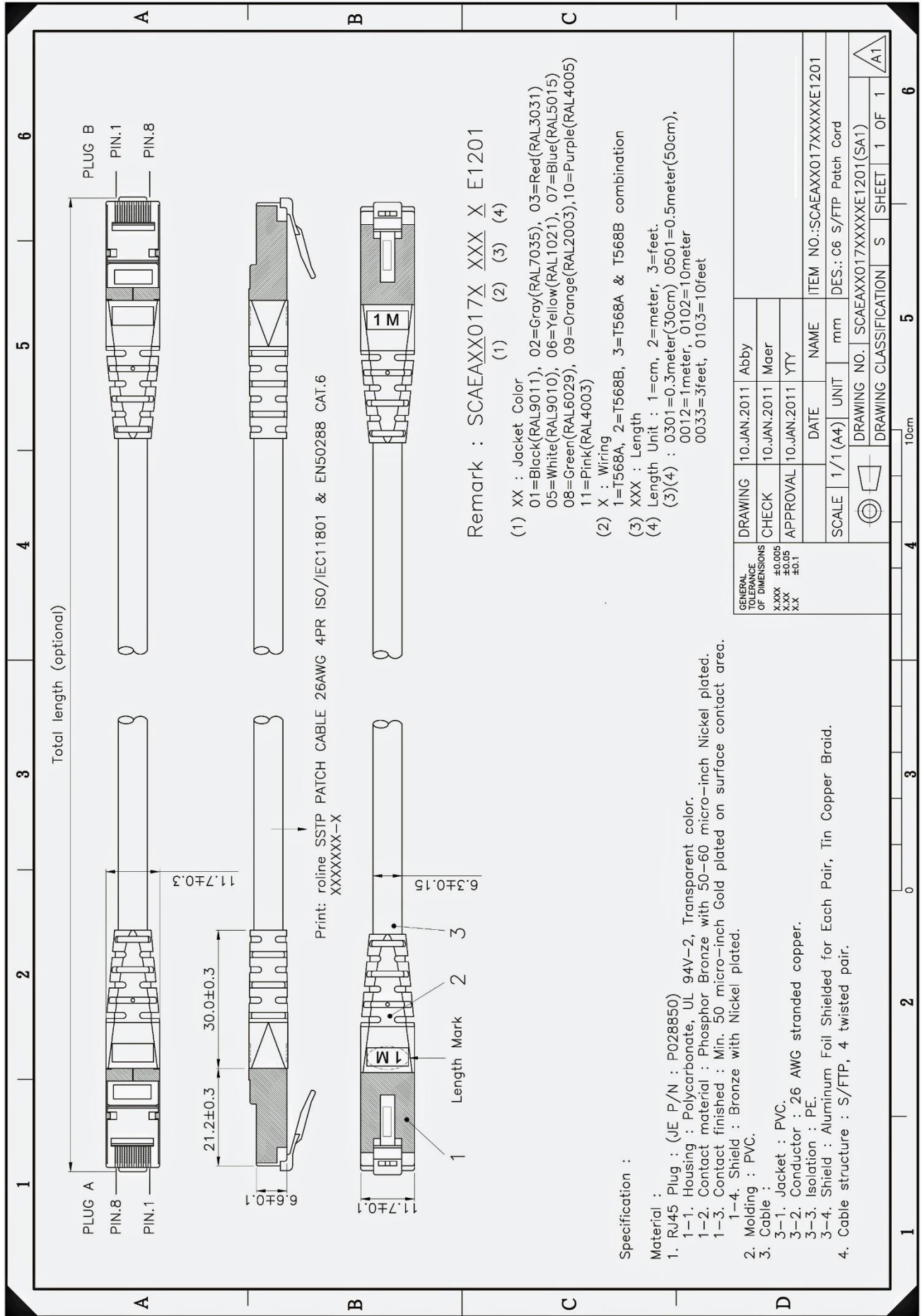
ROLINE Patchcord Cat.6 S/FTP



Description	<p>Patch cable for networking connections between devices. Prepared double shielded Twisted Pair cable with screened RJ-45 connectors on both ends. Durable due to moulded kink protection.</p> <p>Flexible cable, suitable for narrow bending</p> <p>High quality plugs with gold plated contacts</p> <p>Contact settings 1:1, in accordance with the EIA/TIA 568 standard</p> <p>Construction: 4-pair stranded copper wire</p> <p>Complete braid shielding. Pairs shielded with aluminium clad polyester foil</p> <p>Standard: Cat6 / Class E</p> <p>Cover material PVC no LSOH</p> <p>Length indication on the sleeve</p> <p>2-year guarantee stand for performance promise</p>
Shield type	Braid and foiled pair shielded Twisted Pair
Impedance	100 Ohm
Transfer quality	Cat6 /Class E
Cross selection	4P AWG26 EIA/TIA-568B.2-1

Article No RJ45 patch cord Cat.6 unshielded, wiring 1:1

Length	grey	red	yellow	green	blue	black	white	orange	brown	pink	purple
0.3 m	21.15.1310	21.15.1311	21.15.1312	21.15.1313	21.15.1314	21.15.1315	21.15.1316	21.15.1317	21.15.1318	21.15.1319	21.15.1320
0.5 m	21.15.0830	21.15.1321	21.15.1322	21.15.1323	21.15.1324	21.15.1325	21.15.1326	21.15.1327	21.15.1328	21.15.1329	21.15.1330
1.0 m	21.15.0831	21.15.1331	21.15.1332	21.15.333	21.15.1334	21.15.1335	21.15.1336	21.15.1337	21.15.1338	21.15.1339	21.15.1340
1.5 m	21.15.0823	21.15.0824	21.15.0825	21.15.0826	21.15.0827	21.15.0828	21.15.0829	21.15.0821	21.15.0842	21.15.0843	21.15.0844
2.0 m	21.15.0832	21.15.1341	21.15.1342	21.15.1343	21.15.1344	21.15.1345	21.15.1346	21.15.1347	21.15.1348	21.15.1349	21.15.1350
3.0 m	21.15.0833	21.15.1351	21.15.1352	21.15.1353	21.15.1354	21.15.1355	21.15.1356	21.15.1357	21.15.1358	21.15.1359	21.15.1360
5.0 m	21.15.0835	21.15.1361	21.15.1362	21.15.1363	21.15.1364	21.15.1365	21.15.1366	21.15.1367	21.15.1368	21.15.1369	21.15.1370
7.0 m	21.15.0837	21.15.1371	21.15.1372	21.15.1373	21.15.1374	21.15.1375	21.15.1376	21.15.1377	21.15.1378	21.15.1379	21.15.1380
10 m	21.15.0840	21.15.1381	21.15.1382	21.15.1383	21.15.1384	21.15.1385	21.15.1386	21.15.1387	21.15.1388	21.15.1389	21.15.1390
15 m	21.15.0845	21.15.1391	21.15.1392	21.15.1393	21.15.1394	21.15.1395	21.15.1396	21.15.1397	21.15.1398	21.15.1399	21.15.1400
20 m	21.15.0850	21.15.1401	21.15.1402	21.15.1403	21.15.1404	21.15.1405	21.15.1406	21.15.1407	21.15.1408	21.15.1409	21.15.1410



Specification :

Material :

- RJ45 Plug : (JE P/N : P028850)
 - Housing : Polycarbonate, UL 94V-2, Transparent color.
 - Contact material : Phosphor Bronze with 50-60 micro-inch Nickel plated.
 - Contact finished : Min. 50 micro-inch Gold plated on surface contact area.
 - Shield : Bronze with Nickel plated.
- Molding : PVC.
- Cable :
 - Jacket : PVC.
 - Conductor : 26 AWG stranded copper.
 - Isolation : PE.
 - Shield : Aluminum Foil Shielded for Each Pair, Tin Copper Braid.
- Cable structure : S/FTP, 4 twisted pair.

GENERAL TOLERANCE OF DIMENSIONS X.XXX ±0.005 X.XX ±0.05 X.X ±0.1	DRAWING	10.JAN.2011	Abby
	CHECK	10.JAN.2011	Maer
	APPROVAL	10.JAN.2011	YTY
SCALE	1/1 (A4)	UNIT	mm
		DATE	NAME
		ITEM NO.:SCAEAXX017XXXXXE1201	
		DES.: C6 S/FTP Patch Cord	
		DRAWING NO. SCAEAXX017XXXXXE1201(SA1)	
		DRAWING CLASSIFICATION	
		S	SHEET 1 OF 1