

# Foot Switch

## Features

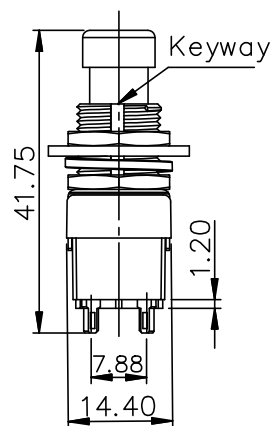
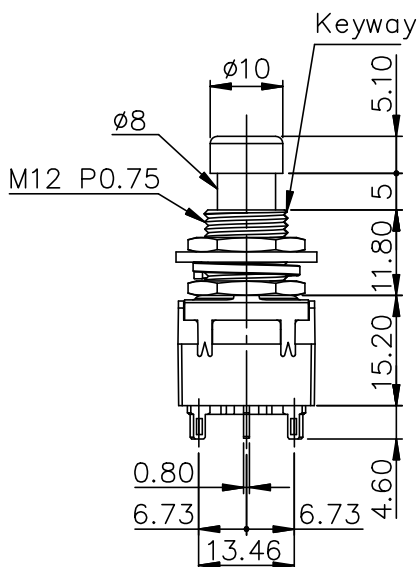
- Miniature size with robust design
- Reliable contact design for demanding applications
- RoHS & REACH compliant





## Specification

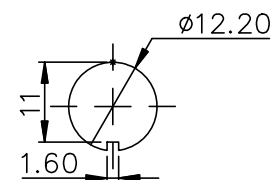
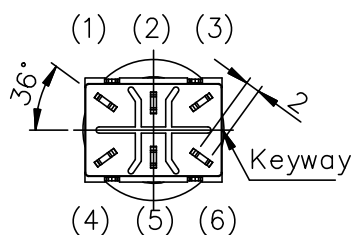
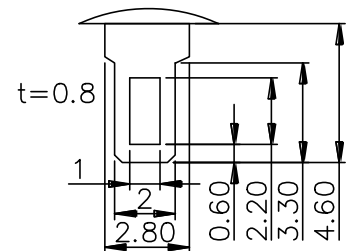
Rating	4 A 125 VAC / 2 A 250 VAC
Actuator Options	Metal Button
Electrical Life	50000 Cycles at Full Load
Operating Temperature	-20 ... 65 °C
Contact Resistance	50 mOhm max.
Insulation Resistance	500 VDC 100 MOhm min.
Dielectric Strength	1500 VAC for 1 min.
Contact Configuration	2CO
Mounting Type	PCB Mount
Switching Function	ON-(ON)
Termination Type	Solder Lug

## Drawing



Type	Circuitry Trait
DPDT	 ON
	 (ON)
	2-3,5-6 2-1,5-4

Solder Terminal



Panel Thickness:  
3.0mm Max.

Art. Nr.  
**RND 210-00739**