

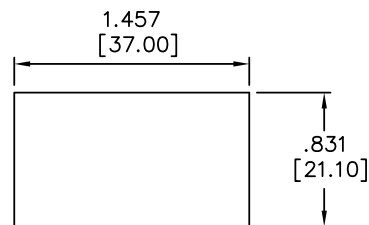
SPECIFICATIONS:

ELECTRICAL LIFE: 30,000 make-and-break cycles at full load.
 CONTACT RESISTANCE: 20mΩ max. initial @ 2-4VDC.
 INSULATION RESISTANCE: 500VDC 100MΩ min.
 DIELECTRIC STRENGTHS: 1,500VAC for 1 minute.
 SOLDERING TEMPERATURE: Hand soldering 350°C for max. 3.sec.
 OPERATING TEMPERATURE:-20°C to +85°C.
 PROTECTION CLASS: IP67 front panel.

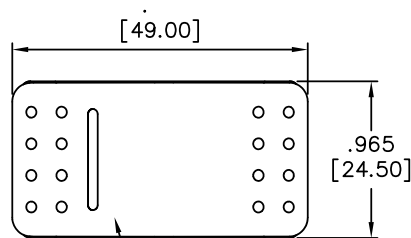
MATERIALS:

BASE: PBT UL94V-0.
 ACTUATOR: PC (Hard surface).
 COVER: Nylon 66 UL 94V-0.
 ACTUATOR BLOCK: PC UL94V-0.
 PIVOT PIN: PBT UL94V-0.
 SPRING: Stainless steel.
 CONTACT: Copper, silver rivet.
 TERMINAL: Brass, tin plated.
 SEAL: Silicone.
 LAMP: LED.

Art. Nr.
RND 210-00526



Panel Cutout



Green 12V LED

POS. 1

POS. 2

