

PCB Tact Switch

PCB 12 VDC 50 mA Through Hole THT



FEATURES:

Contact Resistance: 100m-ohms max. @ 1A 2 - 4 VDC

Insulation Resistance: 100M-ohms max. @ 500VDC

Withstand Voltage: 100VAC RMS for 1 min

Endurance: 10.000 cycles @ 10 cpm

Total Travel: 0.25 mm

SPECIFICATION:

Switching type Momentary function

Switching type, () momentary (on)-off

Rated current 50 mA

Rated voltage 12 VDC

Actuation force 1.57 N

Poles 1

Mounting Through Hole THT

Termination type PCB

Colour black/grey

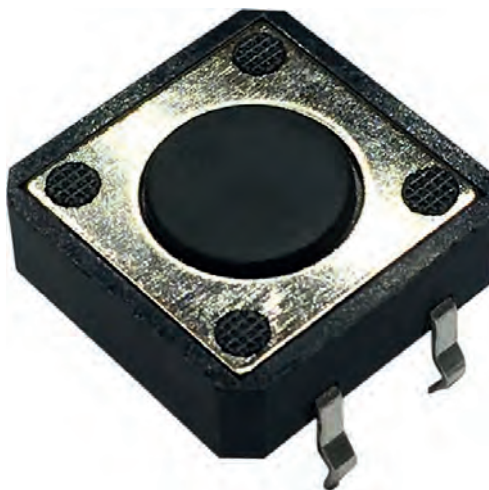
Temperature range -20...+70 °C

Construction form Tact switch

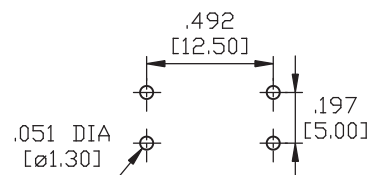
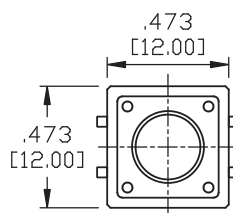
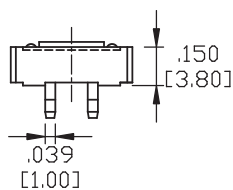
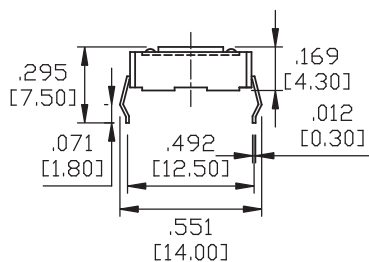
Height 4.3 mm

Length 12 mm

Width 12 mm



DRAWING



Art Nr:

RND 210-00197