

**Specification:**

Rated current	350A
Rated voltage	600V
Insulation Resistance	5000M $\Omega$
Contact Resistance	<40 $\mu\Omega$
Voltage Proof	2200VDC
Life: Without Load(Contact/Disconnect Cycles)	To 10000
Life: With Load(Hot Plug 250 Cycles & 120V)	100A
Flammability	UL94 V-0
Average Connection/Disconnection	280N
Contact Barrel Wire Size	1/0AWG~3/0AWG
Connector Holding Force	500N Min
Environment Temperatures	-20 $^{\circ}$ C...125 $^{\circ}$ C

**Material and Surface Performance:****Housing**

Housing Material	PC
Process of Production	Plastic Injection

**Shrapnel**

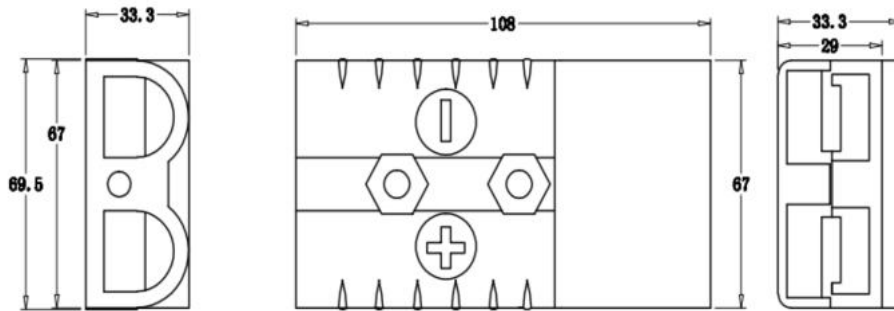
Shrapnel Material	Stainless Steel
Process of Production	Precision Punching

**Terminal**

Terminal Material	Red Copper
Process of Production	Precision Punching
Plating	Ag

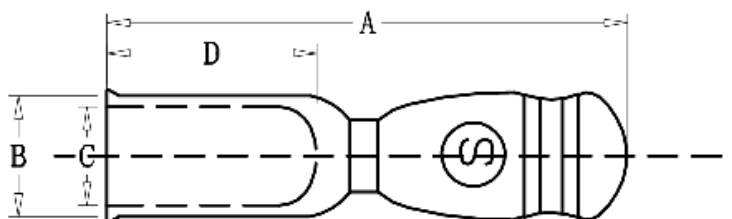
## Housing

Part Number	Housing Colour
RND 205SG350H-GY	Grey
RND 205SG350H-RE	Red



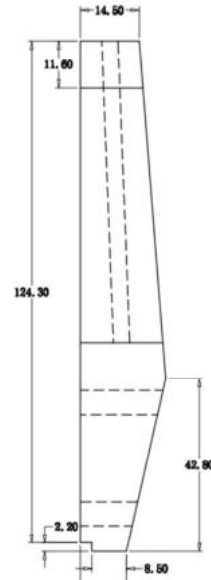
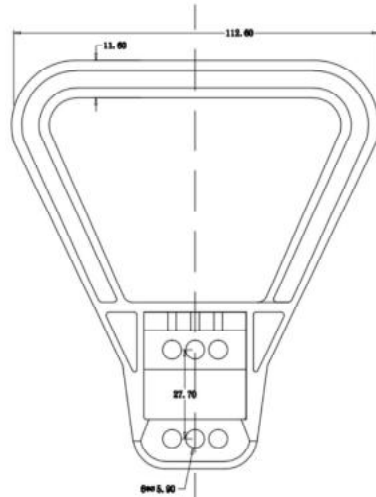
## Terminal

Part Number	-A-(mm)	-B-(mm)	-C-(mm)	-D-(mm)	Wire size	Current
RND 205SGD907-T	81.7	15.8	12.6	37	2/0AWG	3500A



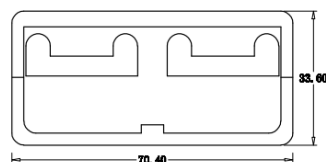
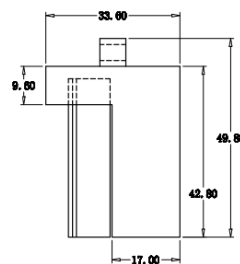
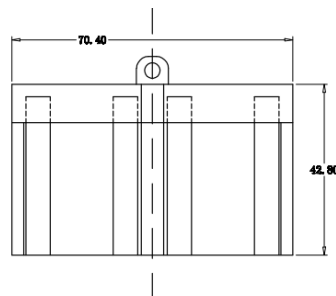
## Auxiliary-Handle

Part Number	-A-(mm)	-B-(mm)	-C-(mm)	-D-(mm)	-E-(mm)	-F-(mm)	-G-(mm)
RND 205SG112G3-RE	41	113	6.6	6.0	125.5	28.7	76.0
RND 205SG112G3-GY	41	113	6.6	6.0	125.5	28.7	76.0



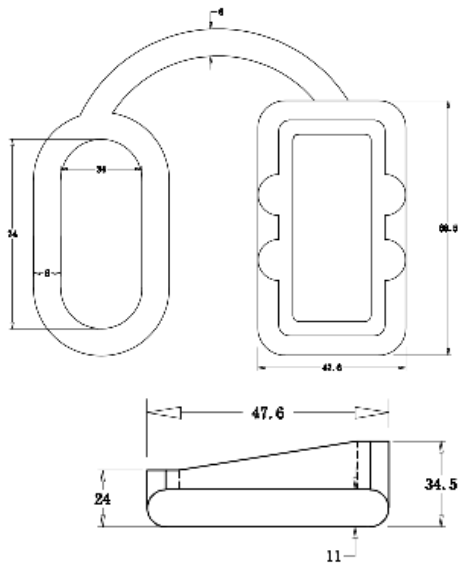
## Dust Cover

Part Number	Colour
RND 205SG114F2-BL	Black



## Dust Cover

Part Number	Colour
RND 205SG114F1-BL	Black
RND 205SG114F1-RE	Red



## Solid Line Plug

Part Number	Colour
RND 205S116F1-RE	Red

