



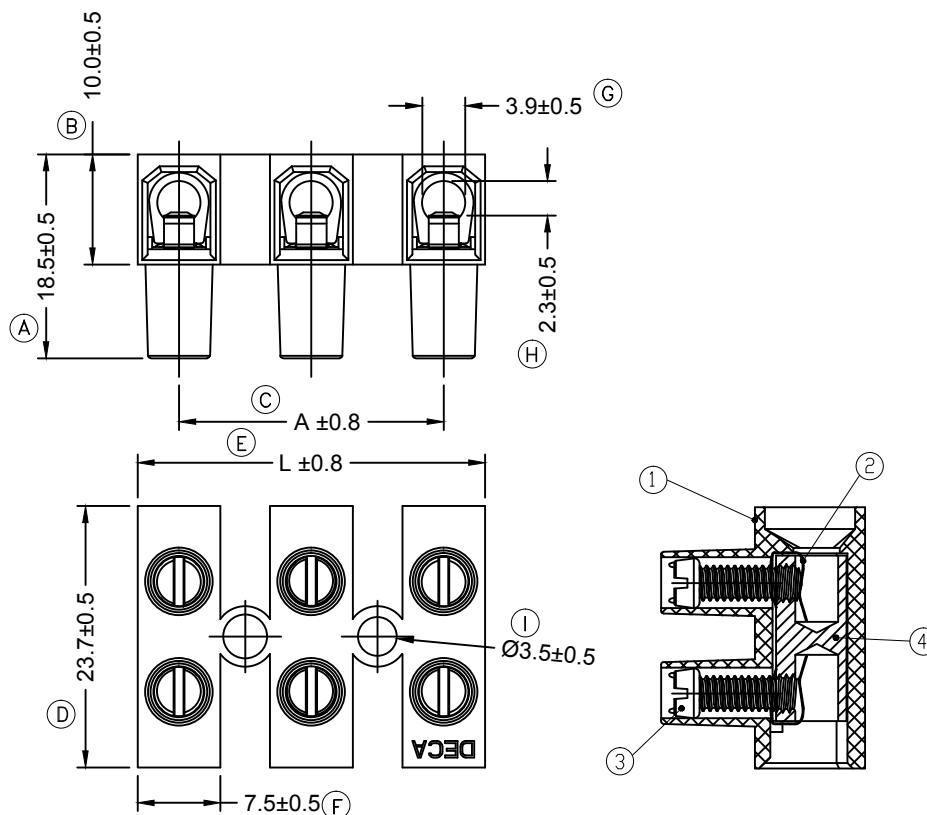
Specification

†	k	450†
#	k	41**
‡	k	20 ... 10** ‡ 8
o	O	5 6
Screw Torque		0.8 Nm
\	u U	4 #
\	u U	#
@	‡ †	† #
@	k	8\ †) #

Material Specification

Insulating Body	PA66, UL94-V2
Wire Protector	Brass, Tin Plated
Screw Material	Steel, Zinc Plated
Cage Clamp	Brass, Nickel Plated

Drawing



Article Nr.	Number of Poles	L	A
RND 205-01071	2	19.6	12
RND 205-01072	3	31.6	24
RND 205-01073	4	43	36
RND 205-01062		139.6	132 mm