

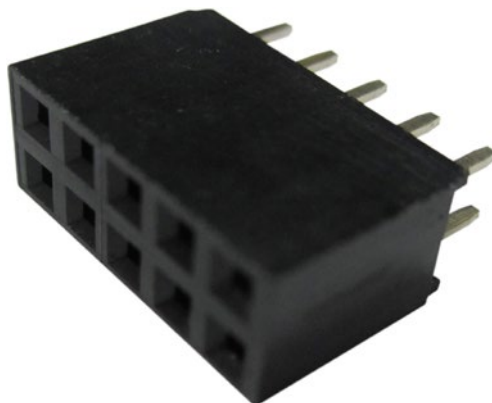
Pin header

Pin headerP Female 10



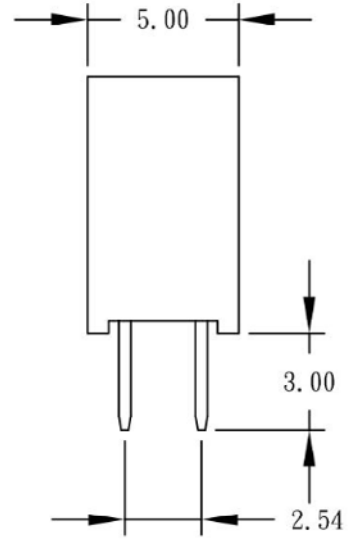
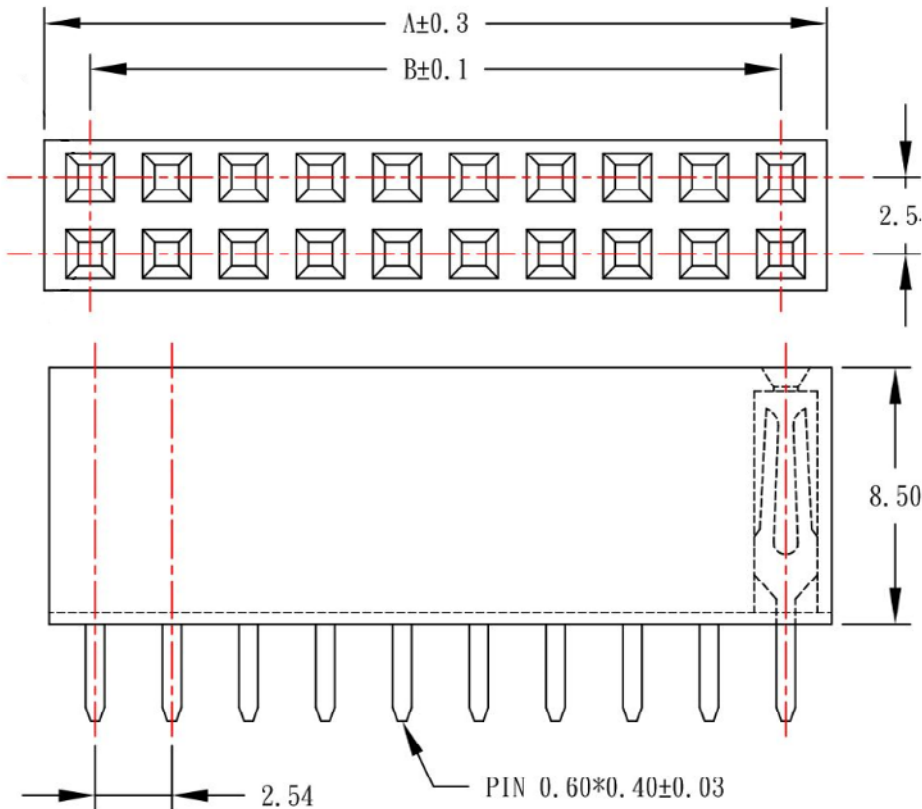
SPECIFICATION:

| | |
|-----------------------|----------------------------------|
| Poles | 10 |
| Lines | 2 |
| Contact material | Gold-plated brass |
| Connector Design | straight |
| Pitch | 2.54 mm |
| Gender of contacts | Female |
| Connector Termination | THT |
| Colour | black |
| Housing Material | Polybutylene terephthalate (PBT) |
| Temperature range | -40...+105 °C |

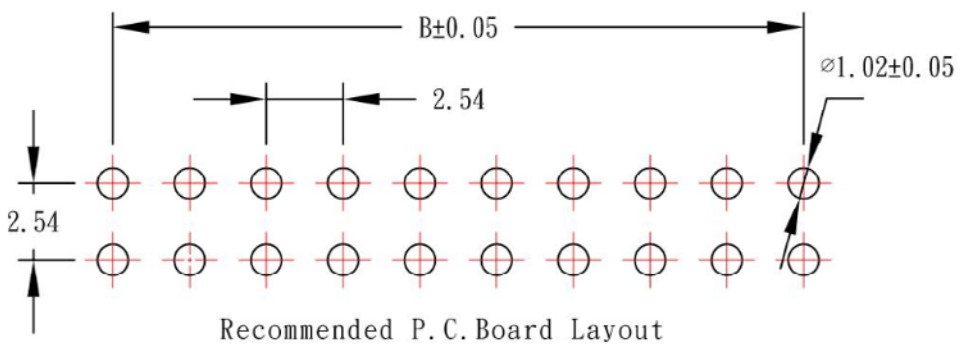


Art. Nr.

RND 205-00654



| POLES | DIM A | DIM B |
|-------|-------|-------|
| 2 | 5.58 | 2.54 |
| 3 | 8.12 | 5.08 |
| 4 | 10.66 | 7.62 |
| 5 | 13.20 | 10.16 |
| 6 | 15.74 | 12.70 |
| 7 | 18.28 | 15.24 |
| 8 | 20.82 | 17.78 |
| 9 | 23.36 | 20.32 |
| 10 | 25.90 | 22.86 |
| 11 | 28.44 | 25.40 |
| 12 | 30.98 | 27.94 |
| 13 | 33.52 | 30.48 |
| 14 | 36.06 | 33.02 |
| 15 | 38.60 | 35.56 |
| 16 | 41.14 | 38.10 |
| 17 | 43.68 | 40.64 |
| 18 | 46.22 | 43.18 |
| 19 | 48.76 | 45.72 |
| 20 | 51.30 | 48.26 |



Recommended P.C. Board Layout