

Connector

SMA 50 Ω, straight



SPECIFICATION:

Frequency Range	DC-6 GHz
Series	SMA
Center contact	Male
VSWR	1.21 max
Nominal Impedance	50 Ω
Connector Design	Straight
Voltage Rating	250 V max

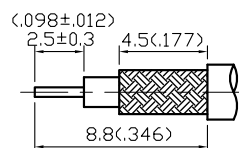
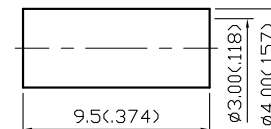
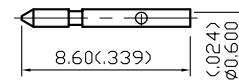
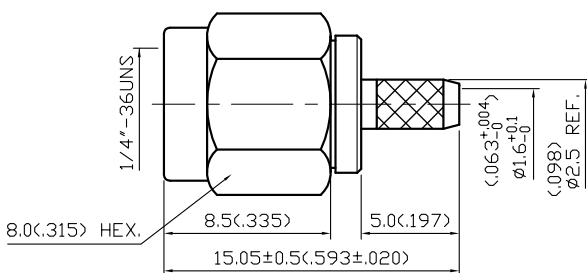
MATERIALS:

Body	Brass, Gold-Plated
Center contact	Brass, Gold-Plated
Insulation	Teflon
Crimp Ferrule	Brass, Gold-Plated
Gasket	Silicone, Red
Washer	Stainless Steel
Shell	Brass, Gold-Plated



MECHANICAL:

Interface in Accordance with:	MIL-STD-348A
For use with	RG-174U or Similar Style Cable
Cable Attachment:	Outer: Crimp, Inner: Solder/Crimp
Recommended Coupling Torque:	3 to 5 lbs
Crimp Size Required:	Contact: 0.64(.025) SQ Crimp Tool
	Ferrule: 3.5 (.138) Hex. Crimp Tool



Art. Nr.
RND 205-00449

STRIPPING DIMENSION