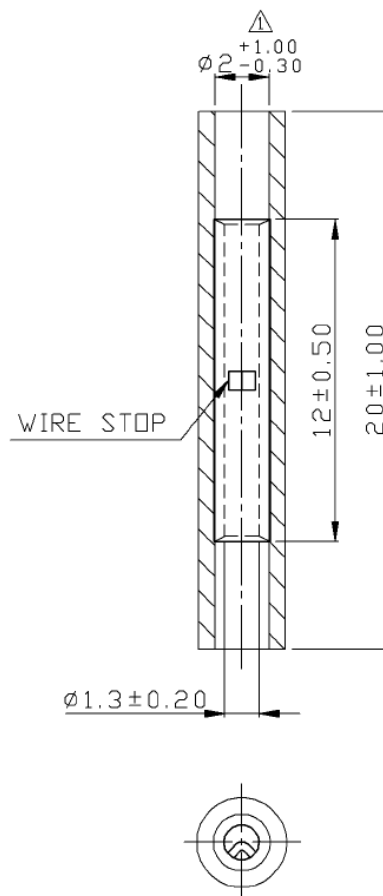


Butt Splice Connector



SPECIFICATION:

Material	Copper			
Wire Range	26-22 AWG (0.2...0.5 mm ²)			
Colour	yellow			
Diameter	1.3 mm			
Insulation Material	Vinyl			
Voltage	600 V			
Surface material	Copper			
Temperature Range	max. +105 °C			
Plating	Tin			
Max. Electric Current	AWG	26	24	22
	A	5.5	7	7



Art. Nr.
RND 465-00096